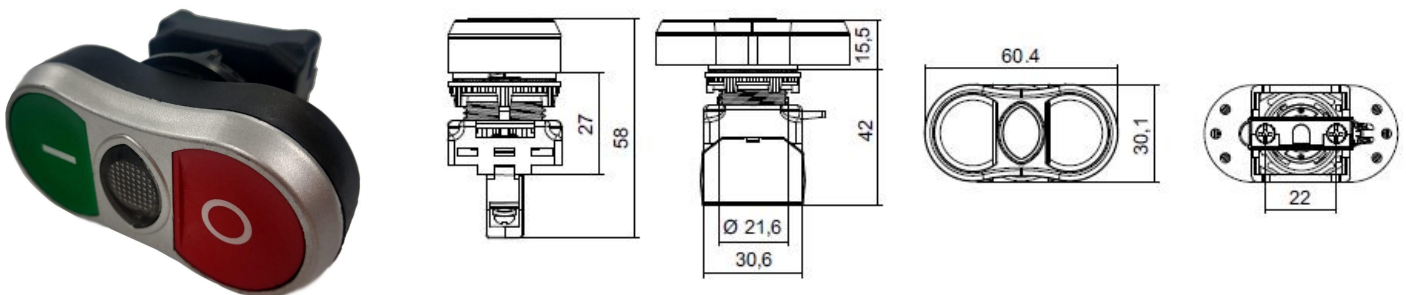


Datasheet

Stock Number:	188-1199	188-1200
	Non-Illuminated	Illuminated
Colour:	GREEN / RED	GREEN / RED

Double Push Button Head



Double push button heads for use with the RS pro modular plastic push button series. Robust design, illuminated and non-illuminated versions with modern silver coloured bezel. Simple installation via standard lock nut.

Specifications:

- 22mm Diameter
- Sprung return
- IP65 rated
- Contact block mounting clip included
- Stackable design for contact blocks (max 6)
- Mechanical life more than 1 million uses.

Stock Number	188-1199	188-1200
Style	Twin Touch	Twin Touch - Illuminated
Colour	Green (with White "I") & Red (with White "O")	
Cut out Diameter	22.5mm	
Actuation	Spring Return	
IP Rating	IP65	
Mounting Type	Panel Mounted	
Body Material	Plastic	

Accessories:

RS Stock Number	Accessory Type
188-1168	Normally Open Contact Block – Screw Terminal
188-1169	Normally Closed Contact Block – Screw Terminal
188-1170	Normally Open Contact Block – Spring Terminal
188-1171	Normally Closed Contact Block – Spring Terminal
188-1172	LED Light Block Red 12Vac/dc
188-1173	LED Light Block Blue 12Vac/dc
188-1174	LED Light Block White 12Vac/dc
188-1176	LED Light Block Yellow 12Vac/dc
188-1177	LED Light Block Green 12Vac/dc
188-1178	LED Light Block Amber 12Vac/dc
188-1179	LED Light Block Red 24Vac/dc
188-1180	LED Light Block Blue 24Vac/dc
188-1182	LED Light Block White 24Vac/dc
188-1183	LED Light Block Yellow 24Vac/dc
188-1184	LED Light Block Green 24Vac/dc
188-1185	LED Light Block Amber 24Vac/dc
188-1186	LED Light Block Red 110Vac
188-1187	LED Light Block Blue 110Vac
188-1188	LED Light Block White 110Vac
188-1189	LED Light Block Yellow 110Vac
188-1190	LED Light Block Green 110Vac
188-1191	LED Light Block Amber 110Vac
188-1192	LED Light Block Red 240Vac
188-1193	LED Light Block Blue 240Vac
188-1194	LED Light Block White 240Vac
188-1195	LED Light Block Yellow 240Vac
188-1196	LED Light Block Green 240Vac
188-1198	LED Light Block Amber 240Vac