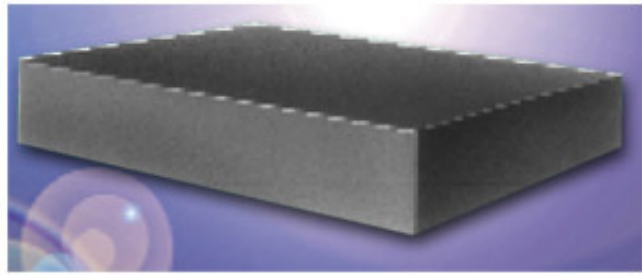


Chassis

Aluminum Chassis



Click on Image for Larger View

Design Features

From bud, the widest selection of aluminum chassis in the industry: 45 sizes. Each is welded at stress points for assured, maximum strength and rigidity. Sides folded in at bottom for additional support. Bottom plate easily detachable. Natural Finish

Catalog Number	Drawings	Width	Length	Height	Gauge	Weight lbs.
AC-1402#	PDF DXF	3.5"	4.5"	1"	.040	1/8
AC-1404	PDF DXF	4"	5"	2"	.040	.25
AC-1405	PDF DXF	4"	6"	1.5"	.040	.25
AC-430	PDF DXF	4"	6"	3"	.040	1/3
AC-431	PDF DXF	4"	6"	2"	.040	.25
AC-1407	PDF DXF	4.5"	8"	1.5"	.040	.25
AC-402	PDF DXF	5"	7"	2"	.040	1/3
AC-429	PDF DXF	5.5"	7"	3"	.040	.5
AC-403	PDF DXF	5"	9.5"	2"	.040	.5
AC-401	PDF DXF	5"	9.5"	2.5"	.040	.5
AC-421	PDF DXF	5"	9.5"	3"	.040	5/8
AC-404	PDF DXF	5"	10"	3"	.040	5/8
AC-1413	PDF DXF	6"	8"	2"	.040	1/3
AC-1414	PDF DXF	6"	14"	3"	.050	1/8
AC-433	PDF DXF	6"	17"	3"	.050	1.25
AC-405	PDF DXF	7"	7"	2"	.040	.5
AC-406	PDF DXF	7"	9"	2"	.040	.5
AC-407	PDF DXF	7"	11"	2"	.040	5/8

AC-408	PDF DXF	7"	12"	3"	.040	7/8
AC-409	PDF DXF	7"	13"	2"	.040	.75
AC-411	PDF DXF	7"	15"	3"	.050	1.25
AC-1416	PDF DXF	7"	17"	2"	.050	1-1/8
AC-423	PDF DXF	7"	17"	3"	.050	1.5
AC-1418	PDF DXF	8"	10"	2.5"	.040	1
AC-1419	PDF DXF	8"	12"	2.5"	.050	1-1/8
AC-424	PDF DXF	8"	12"	3"	.050	1.25
AC-412*	PDF DXF	8"	17"	3"	.050	1.75
AC-1421	PDF DXF	9"	15"	3"	.050	1.5
AC-413	PDF DXF	10"	12"	3"	.050	1.25
AC-414	PDF DXF	10"	14"	3"	.050	1.5
AC-415*	PDF DXF	10"	17"	2"	.050	1.5
AC-416*	PDF DXF	10"	17"	3"	.050	1.75
AC-427*	PDF DXF	10"	17"	4"	.050	2.5
AC-1422	PDF DXF	10"	17"	5"	.050	2.25
AC-1424	PDF DXF	12"	12"	3"	.050	1.25
AC-418*	PDF DXF	12"	17"	3"	.050	2.25
AC-419*	PDF DXF	13"	17"	2"	.050	2-5/8
AC-420*	PDF DXF	13"	17"	3"	.050	2.75
AC-428*	PDF DXF	13"	17"	4"	.050	3.25
AC-1426	PDF DXF	13"	17"	5"	.050	3.5
AC-1427	PDF DXF	14"	17"	3"	.050	2.75
AC-1428	PDF DXF	15"	17"	4"	.050	3.25
AC-1429	PDF DXF	15"	17"	6"	.050	4-18
AC-1430	PDF DXF	17"	17"	3"	.050	3.25
AC-1431	PDF DXF	17"	17"	4"	.050	3-7/8
* Holes for chassis mounting brackets provided. # Not welded.						

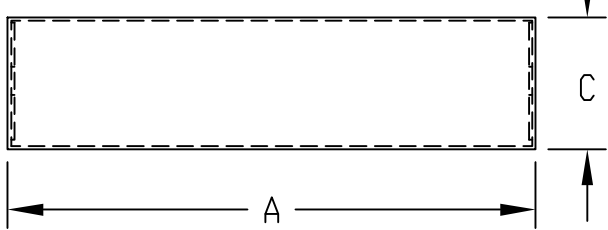
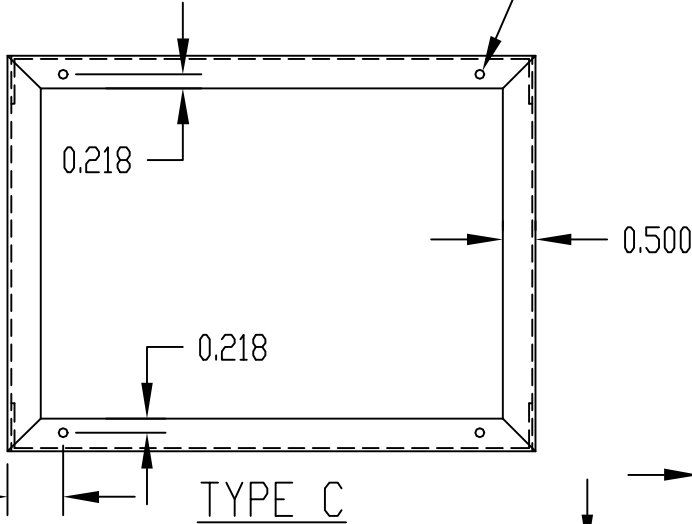
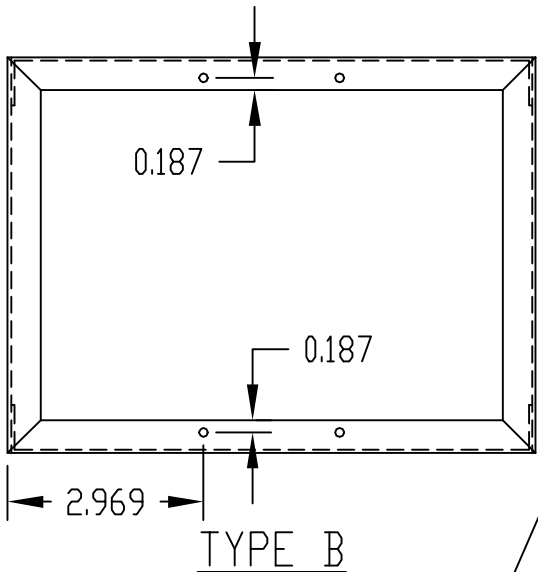
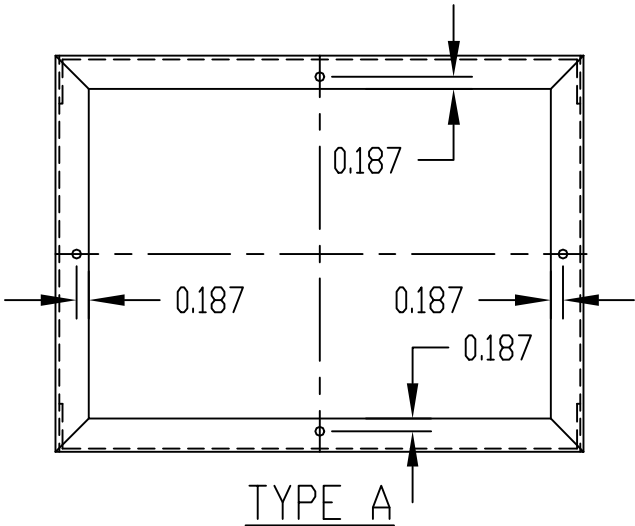
[DXF](#) Autocad DXF Specifications File
(Requires CAD software such as AutoCAD)

[PDF](#) Adobe PDF Specifications File

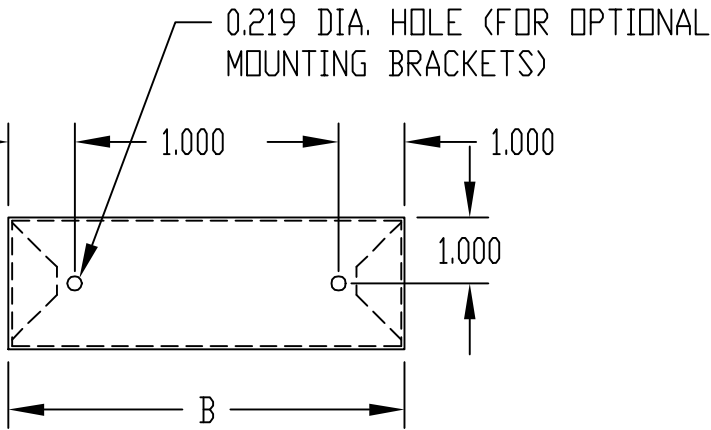


[Download PDF Viewer](#)

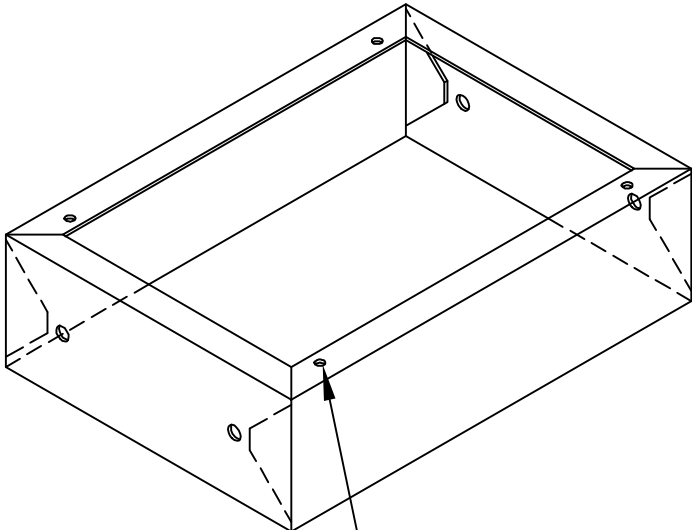
PART NAME	ALUMINUM CHASSIS	PART No.	AC-401 THRU AC-1431
-----------	------------------	----------	---------------------



0.136 DIA. (FOR OPTIONAL
BOTTOM PLATES)



MATERIAL:
ALUMINUM
FINISH:
NATURAL



HILES ACCEPT SIZE #8
SHEETMETAL SCREWS

* HILES FOR MOUNTING BRACKET PROVIDED.

PART No.	A	B	C	TYPE	GAUGE	WT. (#)	PART No.	A	B	C	TYPE	GAUGE	WT. (#)
AC-401	9.500	5.000	2.500	C	0.040	0.500	AC-429	7.000	5.000	3.000	A	0.040	0.500
AC-402	7.000	5.000	2.000	A	0.040	0.333	AC-430	6.000	4.000	3.000	C	0.040	0.333
AC-403	9.500	5.000	2.000	C	0.040	0.500	AC-431	6.000	4.000	2.000	C	0.040	0.250
AC-404	10.000	5.000	3.000	A	0.040	0.625	AC-433	17.000	6.000	3.000	B	0.050	1.250
AC-405	7.000	7.000	2.000	A	0.040	0.500	AC-1402	4.500	3.500	1.000	C	0.040	0.125
AC-406	9.000	7.000	2.000	A	0.040	0.500	AC-1404	5.000	4.000	2.000	C	0.040	0.250
AC-407	11.000	7.000	2.000	B	0.040	0.625	AC-1405	6.000	4.000	1.500	C	0.040	0.250
AC-408	12.000	7.000	3.000	B	0.040	0.875	AC-1407	8.000	4.500	1.500	C	0.040	0.250
AC-409	13.000	7.000	2.000	B	0.040	0.750	AC-1413	8.000	6.000	2.000	A	0.040	0.333
AC-411	15.000	7.000	3.000	B	0.050	1.250	AC-1414	14.000	6.000	3.000	B	0.050	1.125
AC-412*	17.000	8.000	3.000	B	0.050	1.750	AC-1416	17.000	7.000	2.000	B	0.050	1.125
AC-413	12.000	10.000	3.000	B	0.050	1.250	AC-1418	10.000	8.000	2.500	B	0.040	1.000
AC-414	14.000	10.000	3.000	B	0.050	1.500	AC-1419	12.000	8.000	2.500	B	0.050	1.125
AC-415*	17.000	10.000	2.000	B	0.050	1.500	AC-1421	15.000	9.000	3.000	B	0.050	1.500
AC-416*	17.000	10.000	3.000	B	0.050	1.750	AC-1422	17.000	10.000	5.000	B	0.050	2.250
AC-418*	17.000	12.000	3.000	B	0.050	2.250	AC-1424	12.000	12.000	3.000	A	0.050	1.500
AC-419*	17.000	13.000	2.000	B	0.050	2.625	AC-1426	17.000	13.000	5.000	B	0.050	3.500
AC-420*	17.000	13.000	3.000	B	0.050	2.750	AC-1427	17.000	14.000	3.000	B	0.050	2.750
AC-421	9.500	5.000	3.000	C	0.040	0.625	AC-1428	17.000	15.000	4.000	A	0.050	3.250
AC-423	17.000	7.000	3.000	B	0.050	1.500	AC-1429	17.000	15.000	6.000	A	0.050	4.125
AC-424	12.000	8.000	3.000	B	0.050	1.250	AC-1430	17.000	17.000	3.000	A	0.050	3.250
AC-427*	17.000	10.000	4.000	B	0.050	2.500	AC-1431	17.000	17.000	4.000	A	0.050	3.875
AC-428*	17.000	13.000	4.000	B	0.050	3.250							