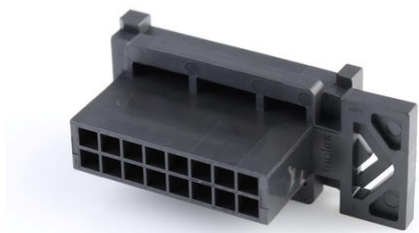




Part Number : [443001600](#)
Product Description : Micro-Fit BMI Plug Housing,
Dual Row, Panel Mount, 16 Circuits, Black
Series Number : 44300
Status : Active
Product Category : Connector Housings



Documents & Resources

Drawings

[443001600_sd.pdf](#)

3D Models and Design Files

[STEP AP242](#)

[SOLIDWORKS](#)

[Creo](#)

Specifications

[443000001-AS-000.pdf](#)

[PK-44300-001-001.pdf](#)

[PS-44300-001-001.pdf](#)

[TS-43045-001-001.pdf](#)


[TS-43045-002-001.pdf](#)

[TS-44300-001-001.pdf](#)

[TS-46235-001-001.pdf](#)

Product Environment Compliance

Compliance

GADSL/IMDS	Not Relevant
China RoHS	 per SJ/T 11365-2006
EU ELV	Not Relevant
Low-Halogen Status	Not Low-Halogen per IEC 61249-2-21
REACH SVHC	Not Contained per D(2025)4165-DC

	(25 June 2025)
EU RoHS	Compliant per EU 2015/863

Compliance Statements

- EU RoHS
- REACH SVHC
- Low-Halogen

Industry Documents

- IPC 1752A Class C
- IPC 1752A Class D
- Molex Product Compliance Declaration
- IEC-62474
- chemSHERPA (xml)

Substances of Interest

- PFAS

EU RoHS Certificate of Compliance

Additional Product Compliance Information

Part Details

General

Status	Active
Category	Connector Housings
Series	44300
Description	Micro-Fit BMI Plug Housing, Dual Row, Panel Mount, 16 Circuits, Black
Application	Power, Wire-to-Board, Wire-to-Wire
Product Name	Micro-Fit BMI
UPC	800753281943

Agency

CSA	LR19980
UL	E29179

Physical

Circuits (maximum)	16
Color - Resin	Black

Flammability	94V-0
Gender	Plug
Glow-Wire Capable	No
Lock to Mating Part	None
Material - Resin	Polyester
Net Weight	4.100/g
Number of Rows	2
Packaging Type	Bag
Panel Mount	Yes
Pitch - Mating Interface	3.00mm
Polarized to Mating Part	Yes
Stackable	No
Temperature Range - Operating	-40° to +105°C

Solder Process Data

Lead-Free Process Capability	N/A
------------------------------	-----

Mates With / Use With

Mates with Part(s)

Description	Part Number
Micro-Fit BMI Dual Row Receptacle Housings	<u>44133</u>
Micro-Fit BMI Right-Angle Dual Row PCB Receptacles	<u>44764</u>
Micro-Fit BMI Vertical Dual Row PCB Receptacles	<u>44769</u>

Use with Part(s)

Description	Part Number
Micro-Fit Male Crimp Terminals	<u>43031</u>
Pre-Crimped Lead Micro-Fit 3.0 Male-to-Micro-Fit 3.0 Male	<u>214762</u>
Pre-Crimped Lead Micro-Fit 3.0 Male-to-Pigtail	<u>214763</u>

This document was generated on Aug 11, 2025