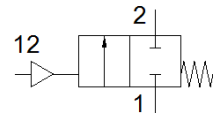
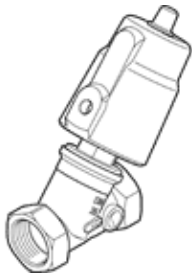


angle seat valve

VZXF-L-M22C-M-B-G1-230-M1-H3B1T-50-10

Part number: 3535665

FESTO



Data sheet

Feature	Value
Design structure	Poppet valve with spring return
Type of actuation	pneumatic
Sealing principle	soft
Assembly position	Any
Mounting type	Line installation
Process valve connection	G1
Nominal diameter DN	25
Nominal size	23 mm
Valve function	2/2 closed, monostable
Flow direction	non reversible
Medium pressure	0 ... 10 bar
Nominal pressure of process valve	16
Exhaust-air function	not throttleable
Type of reset	mechanical spring
Type of piloting	With external control
Pneumatic connection	G1/8
Operating pressure	6 ... 10 bar
Medium	Vapour Mineral oil-based hydraulic oil Inert gases Mineral oil Water Filtered compressed air, degree of filtration 200 µm Neutral fluids
Operating medium	Compressed air in accordance with ISO8573-1:2010 [7:4:4]
Max. viscosity	600 mm ² /s
Medium temperature	-40 ... 200 °C
Ambient temperature	-10 ... 60 °C
Flow rate Kv	9.6 m ³ /h
Materials note	Contains PWIS substances Conforms to RoHS
Material housing	Gunmetal (red brass)
Material number for housing	CC499K
Material drive head	Brass
Material spindle seal	PTFE
Material seat seal	PTFE
Product weight	1,500 g
Corrosion resistance classification CRC	1 - Low corrosion stress