

Number of contacts 20, 26, 28, 36, 40, 50, 68, 80, 100

Pitch 1.27 mm

Working current 1 A

Working voltage 240 V ~

Test voltage $U_{i,ins.}$ 750 V

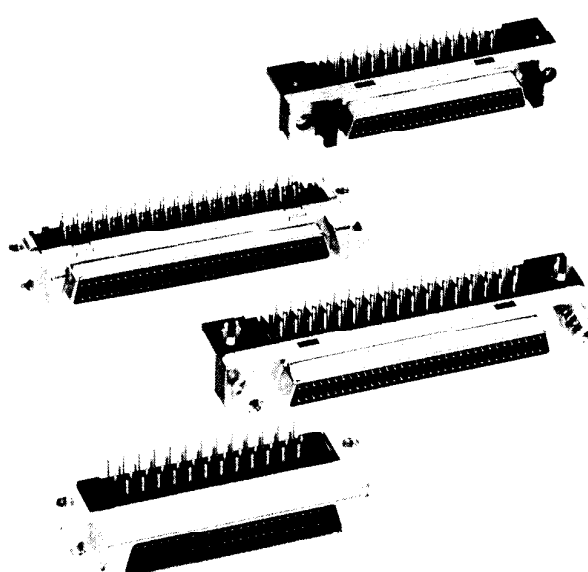
Contact resistance $\leq 30 \text{ m}\Omega$

Insulation resistance $\geq 10^3 \text{ M}\Omega$

Temperature range $-55 \text{ }^\circ\text{C} \dots +105 \text{ }^\circ\text{C}$

Terminations

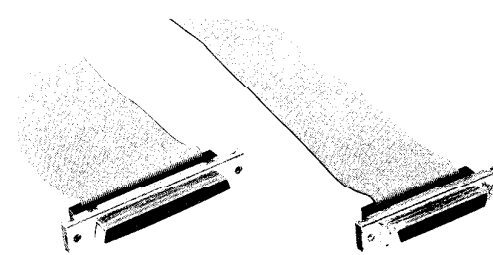
- Solder cup AWG 24
Insulation max. $\varnothing 1 \text{ mm}$
- Solder pins Straight for PCB holes
min. $\varnothing 0.74 \text{ mm}$
Angled 90° for PCB holes
min. $\varnothing 0.74 \text{ mm}$
- Insulation displacement Discret wire
AWG 28 to AWG 30
max. section: 0.089 mm^2
min. section: 0.050 mm^2
Insulation \varnothing min. 0.50 mm
 \varnothing max. 0.88 mm
Flat cable
AWG 30 pitch 0.635 mm



Materials

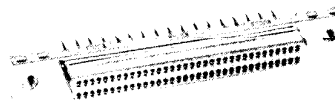
- Moulding Thermoplastic resin
glass-fibre filled UL 94-V0
Liquid Christal Polymer (LCP)
for SCSI 3, straight
- Contacts Copper alloy
- Contact plating Selectively gold-plated
- Metal shell Die cast zamac or stamped
steel, nickel-plated
- Hoods Die cast zamac, nickel-plated

Thermoplastic resin
nickel-plated, steel insert



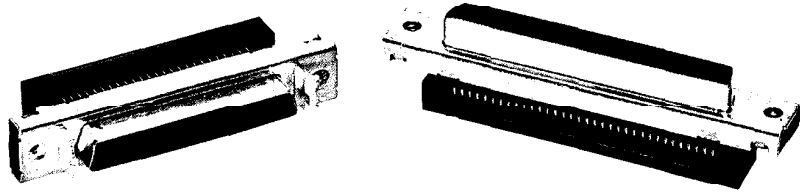
Press-in

- Insertion process Flat rock
- Maximum press-in force per contact 100 N
- Minimum push out force per contact 15 N
- Number of repairs 2
- Recommended Board characteristics finished hole $\varnothing 0.6 \pm 0.07$
 -0.05 mm
- Drilled hole size $\varnothing 0.7 / 0.74 \text{ mm}$
- Cu 30 – 60 μm
- Sn 5 – 20 μm
- Board thickness 1.6 – 3.2 mm



Number of contacts

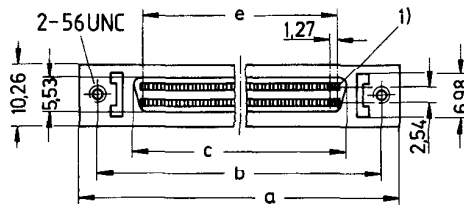
50-68



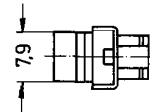
Female connector for flat cable

Identification	No. of contacts	Part No.	
		with latch system	with screw lock system
Female panel connector with insulation displacement termination			
for flat cable pitch 0.635 mm AWG 30	50	60 04 050 5343	60 04 050 5344
	68	60 04 068 5343	60 04 068 5344

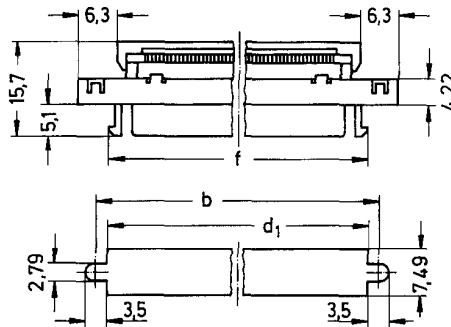
Female connector with latch system



Dimensions in mm

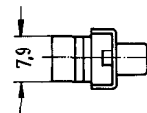
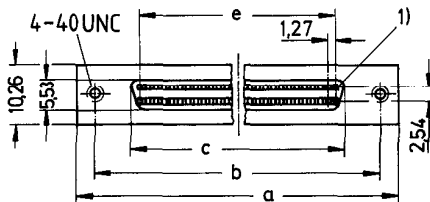


Panel cut out

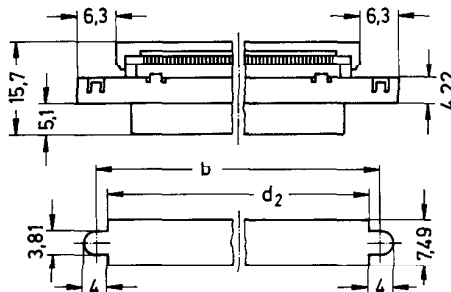


	a	b	c	d ₁	d ₂	e	f
50	52.45	46.48	34.70	42.80	42.30	30.48	42.30
68	63.88	57.91	46.13	54.23	53.72	41.91	53.72

Female connector with screw lock system



Panel cut out



1) Contact number 1

Tools see page 40