

4

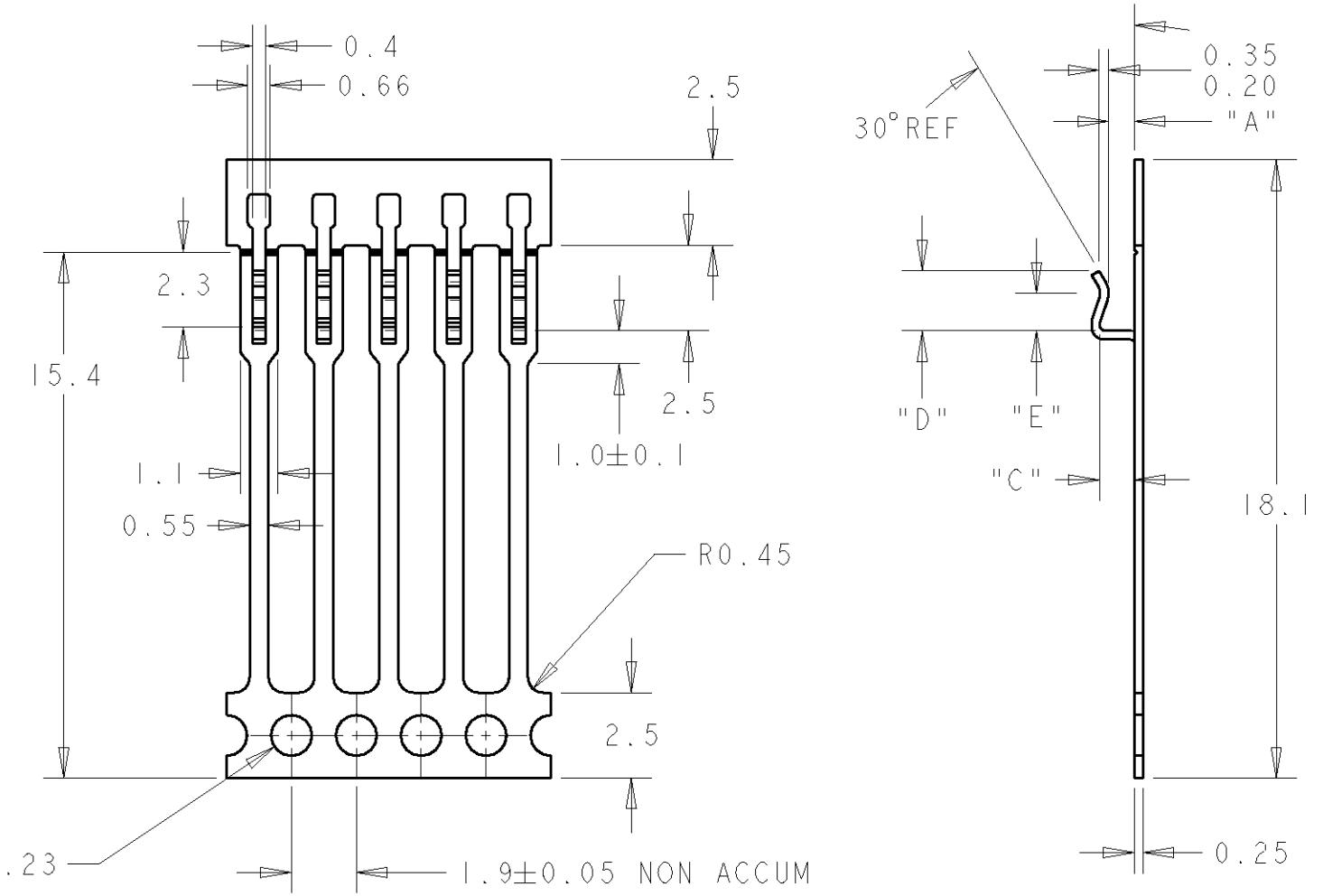
3

2

1

THIS DRAWING IS UNPUBLISHED. RELEASED FOR PUBLICATION 20
 © COPYRIGHT 20 BY TYCO ELECTRONICS CORPORATION. ALL RIGHTS RESERVED.

LOC	DIST	REVISIONS			
P	LTR	DESCRIPTION	DATE	DWN	APVD
	D	EBD0-0095-04	28/02/05	AM	FWK
	E	ECR-06-006890	21/03/06	MJG	JA
	F	ECR-06-0054524	29/11/06	MJG	JA



NOTES:

- FOR TECHNICAL DATA REFER TO YOUR LOCAL TYCO ELECTRONIC SALES OFFICE
- ALL DIMENSIONS ARE NOMINAL FOR REFERENCE ONLY UNLESS OTHERWISE STATED
- FOR PACKAGING INFORMATION SEE PACKING SPECIFICATION 107-3319
- ALL LABELS TO INCLUDE RoHS COMPLIANCY NOTE (DIRECTIVE 2002/95/EC COMPLIANT)



PART NO	PACKING LABEL DESCRIPTION LINE 1	PACKING LABEL DESCRIPTION LINE 2	PACKING LABEL DESCRIPTION LINE 3	PACKING LABEL DESCRIPTION LINE 4
1634235-1	LEAD FRAME	SIL 1.905mm PITCH	0.62 - 0.70 X 0.55mm	DIRECTIVE 2002/95/EC COMPLIANT
I-1634235-1	LEAD FRAME	SIL 1.905mm PITCH	0.62 - 0.70 X 0.55mm	DIRECTIVE 2002/95/EC COMPLIANT

TIN PLATE 4-8 MICRONS TO TYCO SPEC 112-65-1	50000	530mm DIA REEL with Tyco Markings & Label	SIL LEADFRAME	I-1634235-1
TIN PLATE 4-8 MICRONS TO TYCO SPEC 112-65-1	75000	Std Reel with Tyco Markings & Label	SIL LEADFRAME	1634235-1
PLATING TYPE	QTY/REEL	PACKAGING STYLE	DESCRIPTION	PART NO

PART No	1634235-1	I-1634235-1
SUBSTRATE	0.635	0.635
A	0.5 - 0.55	0.5 - 0.55
C	0.8 - 1.0	0.8 - 1.0
D	1.65 - 1.85	1.65 - 1.85
E	1.0 - 1.2	1.0 - 1.2

THIS DRAWING IS A CONTROLLED DOCUMENT FOR TYCO ELECTRONICS CORPORATION IT IS SUBJECT TO CHANGE AND THE CONTROLLING ENGINEERING ORGANIZATION SHOULD BE CONTACTED FOR THE LATEST REVISION.

DWN M.GREENER 21MAR2006
 CHK J. AMBROSE 21MAR2006
 APVD F. WHEELER-KING 21MAR2006

tyco Electronics Tyco Electronics Bideford, Devon EX39 4HA

NAME: SIL LEAD FRAME 0.62 - 0.70mm x 1.905 PITCH

PRODUCT SPEC APPLICATION SPEC WEIGHT

MATERIAL SEE TABLE FINISH

SIZE A3 CAGE CODE 00779 DRAWING NO C-1634235 RESTRICTED TO -

CUSTOMER DRAWING SCALE SHEET OF REV F