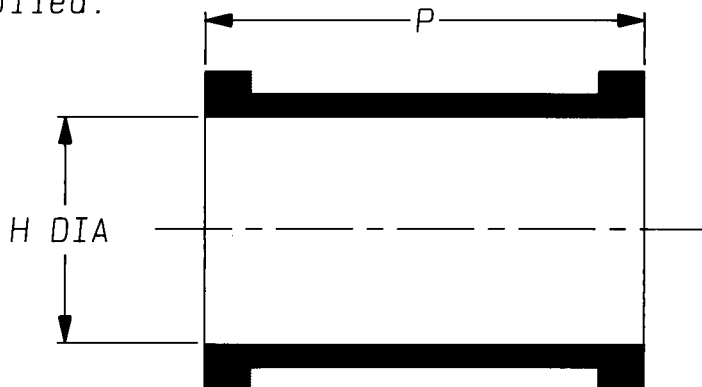
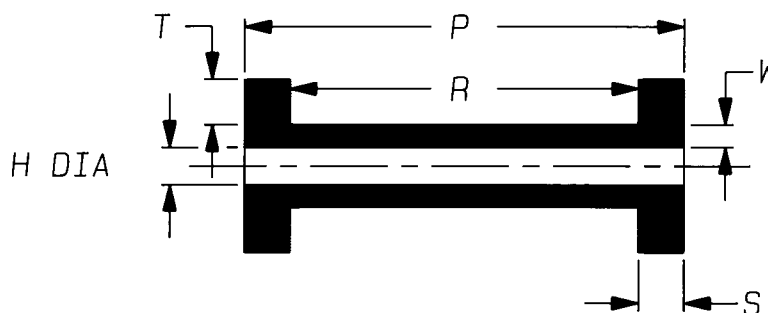


a) Part as supplied.

202W3**



b) Part after unrestricted recovery.



Dimensions (in millimetres).

Part No.	H		P		R	S	T	W
	MIN	MAX	±2	±10%	±10%	±10%	±10%	±20%
	a	b	a	b	b	b	b	b
202W302	32	9.5	23	35	25	5.0	3.0	1.5
202W312	40	12.7	24	35	25	5.0	3.0	2.0
202W321	10	3.0	25	29	23	3.0	3.0	1.5
202W331	22	6.4	20	29	24	2.5	2.0	1.5
202W342	36	18.0	27	35	25	5.0	3.0	2.0

Copyright (!)
Urheberrechte

The copyright in this drawing is the property of Raychem Ltd. The drawing is issued on condition that it is not copied, reproduced or disclosed to a third party, either in whole or in part without the prior written consent of Raychem Ltd.

Drawn A.LILLEY. Checked *[Signature]* Issue 7 Date May 1994

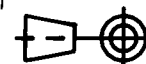
Conforms to ISO Recommendations
3rd Angle Projection
Not to Scale

Approval
Design

[Signature]

MKTG.

Q.C. *[Signature]*



Iss.	Date	E.C.R. No.	Details of Change
3	March 1986	4604	CHAMGE W DIM
4	March 1989	5614	ADD 321
5	November 1990	H0037	ADD 331
6	March 1993	H0153	EXPANSION REDUCED AND Pa ADDED
7	May 1994	H0209	ADD 342

COMPATIBILITY CHART

MATERIAL DASH NUMBER	MATERIAL DESCRIPTION	COATING SLASH NUMBER
-3	POLYOLEFIN, SEMI-RIGID	/42, /86
-4	POLYOLEFIN, FLEXIBLE	/42, /86
-25	ELASTOMER, FLUID RESISTANT	/86, /225

AS SUPPLIED DIMENSIONS ARE FOR UNCOATED PARTS,
WHEN COATING IS ADDED, ENTRY DIAMETERS WILL REDUCE BY 1.5mm MAX.