

LP 2,5/11 - Plug

1071722

<https://www.phoenixcontact.com/in/products/1071722>



Please be informed that the data shown in this PDF document is generated from our online catalog. Please find the complete data in the user documentation. Our general terms of use for downloads are valid.



Plug, nom. voltage: 800 V, nominal current: 24 A, number of positions: 11, connection method: Push-in connection, Rated cross section: 2.5 mm², cross section: 0.14 mm²- 4 mm², color: gray

Your advantages

- Large-surface labeling option
- The Push-in technology COMBI plugs for self-assembly provide solutions that users can implement themselves
- Tested for railway applications

Commercial data

Item number	1071722
Packing unit	10 pc
Minimum order quantity	10 pc
Sales key	*****
Product key	BE2244
GTIN	4055626761343
Weight per piece (including packing)	38.51 g
Weight per piece (excluding packing)	38.51 g
Customs tariff number	85366990
Country of origin	PL

Technical data

Product properties

Product type	Terminal plug
Number of positions	11

Insulation characteristics

Overvoltage category	III
Degree of pollution	3

Electrical properties

Rated surge voltage	8 kV
---------------------	------

Connection data

Stripping length	8 mm ... 10 mm
Connection in acc. with standard	IEC 60947-7-1
Conductor cross section rigid	0.14 mm ² ... 4 mm ²
Cross section AWG	26 ... 12 (converted acc. to IEC)
Conductor cross section flexible	0.14 mm ² ... 4 mm ²
Conductor cross section, flexible [AWG]	26 ... 12 (converted acc. to IEC)
Conductor cross-section flexible (ferrule without plastic sleeve)	0.14 mm ² ... 2.5 mm ²
Flexible conductor cross section (ferrule with plastic sleeve)	0.14 mm ² ... 2.5 mm ²
Nominal current	24 A
Maximum load current	24 A (with 4 mm ² conductor cross-section)
Nominal voltage	800 V
Nominal cross section	2.5 mm ²

Connection cross sections directly pluggable

Conductor cross section rigid	0.5 mm ² ... 4 mm ²
Conductor cross section, rigid [AWG]	20 ... 12 (converted acc. to IEC)
Conductor cross section flexible	0.5 mm ² ... 2.5 mm ²
Conductor cross section, flexible [AWG]	14 (converted acc. to IEC)
Conductor cross-section flexible (ferrule without plastic sleeve)	0.5 mm ² ... 2.5 mm ²
Flexible conductor cross section (ferrule with plastic sleeve)	0.5 mm ² ... 2.5 mm ²

Dimensions

Width	56.7 mm
Height	18.6 mm
Depth	40.3 mm
Length	18.6 mm

Material specifications

Color	gray (RAL 7042)
Flammability rating according to UL 94	V0
Insulating material group	I

Insulating material	PA
Static insulating material application in cold	-60 °C
Relative insulation material temperature index (Elec., UL 746 B)	130 °C
Fire protection for rail vehicles (DIN EN 45545-2) R22	HL 1 - HL 3
Fire protection for rail vehicles (DIN EN 45545-2) R23	HL 1 - HL 3
Fire protection for rail vehicles (DIN EN 45545-2) R24	HL 1 - HL 3
Fire protection for rail vehicles (DIN EN 45545-2) R26	HL 1 - HL 3
Surface flammability NFPA 130 (ASTM E 162)	passed
Specific optical density of smoke NFPA 130 (ASTM E 662)	passed
Smoke gas toxicity NFPA 130 (SMP 800C)	passed

Environmental and real-life conditions

Ambient conditions

Ambient temperature (operation)	-60 °C (max. operating temperature see derating curve)
Ambient temperature (storage/transport)	-25 °C ... 60 °C (for a short time, not exceeding 24 h, -60 °C to +70 °C)
Ambient temperature (assembly)	-5 °C ... 70 °C
Ambient temperature (actuation)	-5 °C ... 70 °C
Permissible humidity (operation)	20 % ... 90 %
Permissible humidity (storage/transport)	30 % ... 70 %

Standards and regulations

Connection in acc. with standard	IEC 60947-7-1
----------------------------------	---------------

LP 2,5/11 - Plug

1071722

<https://www.phoenixcontact.com/in/products/1071722>



Drawings

Circuit diagram



LP 2,5/11 - Plug


1071722

<https://www.phoenixcontact.com/in/products/1071722>



Approvals

To download certificates, visit the product detail page: <https://www.phoenixcontact.com/in/products/1071722>

 cCSAus Approval ID: 80174529				
	Nominal voltage U_N	Nominal current I_N	Cross section AWG	Cross section mm^2
Use group B	600 V	20 A	26 - 12	-
Use group C	600 V	20 A	26 - 12	-
Use group F	800 V	20 A	26 - 12	-
Use group D	600 V	5 A	26 - 12	-

DNV Approval ID: TAE00004TX

LP 2,5/11 - Plug

1071722

<https://www.phoenixcontact.com/in/products/1071722>



Classifications

ECLASS

ECLASS-11.0	27141151
ECLASS-12.0	27141151
ECLASS-13.0	27250306

ETIM

ETIM 9.0	EC002021
----------	----------

UNSPSC

UNSPSC 21.0	39121400
-------------	----------

LP 2,5/11 - Plug

1071722

<https://www.phoenixcontact.com/in/products/1071722>



Environmental product compliance

EU RoHS	
Fulfills EU RoHS substance requirements	Yes, No exemptions
China RoHS	
Environment friendly use period (EFUP)	EFUP-E
	No hazardous substances above the limits
EU REACH SVHC	
REACH candidate substance (CAS No.)	No substance above 0.1 wt%

LP 2,5/11 - Plug

1071722

<https://www.phoenixcontact.com/in/products/1071722>



Accessories

PL - Latching

1436267

<https://www.phoenixcontact.com/in/products/1436267>



Latching, depth: 27.7 mm, width: 4.4 mm, height: 8.7 mm, color: orange

PSL - Latching

1436966

<https://www.phoenixcontact.com/in/products/1436966>



Latching, depth: 63.8 mm, width: 9.7 mm, height: 8.7 mm, number of positions: 2, color: orange

LP 2,5/11 - Plug

1071722

<https://www.phoenixcontact.com/in/products/1071722>



LP 2,5/ 1 - Plug

1071712

<https://www.phoenixcontact.com/in/products/1071712>



Plug, nom. voltage: 800 V, nominal current: 24 A, number of positions: 1, connection method: Push-in connection, Rated cross section: 2.5 mm², cross section: 0.14 mm²- 4 mm², color: gray

LP 2,5/ 2 - Plug

1071713

<https://www.phoenixcontact.com/in/products/1071713>



Plug, nom. voltage: 800 V, nominal current: 24 A, number of positions: 2, connection method: Push-in connection, Rated cross section: 2.5 mm², cross section: 0.14 mm²- 4 mm², color: gray

LP 2,5/11 - Plug

1071722

<https://www.phoenixcontact.com/in/products/1071722>



LP 2,5/ 3 - Plug

1071714

<https://www.phoenixcontact.com/in/products/1071714>



Plug, nom. voltage: 800 V, nominal current: 24 A, number of positions: 3, connection method: Push-in connection, Rated cross section: 2.5 mm², cross section: 0.14 mm²- 4 mm², color: gray

LP 2,5/ 4 - Plug

1071715

<https://www.phoenixcontact.com/in/products/1071715>



Plug, nom. voltage: 800 V, nominal current: 24 A, number of positions: 4, connection method: Push-in connection, Rated cross section: 2.5 mm², cross section: 0.14 mm²- 4 mm², color: gray

LP 2,5/11 - Plug

1071722

<https://www.phoenixcontact.com/in/products/1071722>



LP 2,5/ 5 - Plug

1071716

<https://www.phoenixcontact.com/in/products/1071716>



Plug, nom. voltage: 800 V, nominal current: 24 A, number of positions: 5, connection method: Push-in connection, Rated cross section: 2.5 mm², cross section: 0.14 mm²- 4 mm², color: gray

LP 2,5/ 6 - Plug

1071717

<https://www.phoenixcontact.com/in/products/1071717>



Plug, nom. voltage: 800 V, nominal current: 24 A, number of positions: 6, connection method: Push-in connection, Rated cross section: 2.5 mm², cross section: 0.14 mm²- 4 mm², color: gray

LP 2,5/11 - Plug

1071722

<https://www.phoenixcontact.com/in/products/1071722>



LP 2,5/ 7 - Plug

1071718

<https://www.phoenixcontact.com/in/products/1071718>



Plug, nom. voltage: 800 V, nominal current: 24 A, number of positions: 7, connection method: Push-in connection, Rated cross section: 2.5 mm², cross section: 0.14 mm²- 4 mm², color: gray

LP 2,5/ 8 - Plug

1071719

<https://www.phoenixcontact.com/in/products/1071719>



Plug, nom. voltage: 800 V, nominal current: 24 A, number of positions: 8, connection method: Push-in connection, Rated cross section: 2.5 mm², cross section: 0.14 mm²- 4 mm², color: gray

LP 2,5/11 - Plug

1071722

<https://www.phoenixcontact.com/in/products/1071722>



LP 2,5/ 9 - Plug

1071720

<https://www.phoenixcontact.com/in/products/1071720>



Plug, nom. voltage: 800 V, nominal current: 24 A, number of positions: 9, connection method: Push-in connection, Rated cross section: 2.5 mm², cross section: 0.14 mm²- 4 mm², color: gray

LP 2,5/10 - Plug

1071721

<https://www.phoenixcontact.com/in/products/1071721>



Plug, nom. voltage: 800 V, nominal current: 24 A, number of positions: 10, connection method: Push-in connection, Rated cross section: 2.5 mm², cross section: 0.14 mm²- 4 mm², color: gray

LP 2,5/11 - Plug

1071722

<https://www.phoenixcontact.com/in/products/1071722>



LP 2,5/12 - Plug

1071723

<https://www.phoenixcontact.com/in/products/1071723>



Plug, nom. voltage: 800 V, nominal current: 24 A, number of positions: 12, connection method: Push-in connection, Rated cross section: 2.5 mm², cross section: 0.14 mm²- 4 mm², color: gray

LP 2,5/13 - Plug

1071724

<https://www.phoenixcontact.com/in/products/1071724>



Plug, nom. voltage: 800 V, nominal current: 24 A, number of positions: 13, connection method: Push-in connection, Rated cross section: 2.5 mm², cross section: 0.14 mm²- 4 mm², color: gray

LP 2,5/11 - Plug

1071722

<https://www.phoenixcontact.com/in/products/1071722>



LP 2,5/14 - Plug

1071725

<https://www.phoenixcontact.com/in/products/1071725>



Plug, nom. voltage: 800 V, nominal current: 24 A, number of positions: 14, connection method: Push-in connection, Rated cross section: 2.5 mm², cross section: 0.14 mm²- 4 mm², color: gray

LP 2,5/15 - Plug

1071726

<https://www.phoenixcontact.com/in/products/1071726>



Plug, nom. voltage: 800 V, nominal current: 24 A, number of positions: 15, connection method: Push-in connection, Rated cross section: 2.5 mm², cross section: 0.14 mm²- 4 mm², color: gray

LP 2,5/11 - Plug

1071722

<https://www.phoenixcontact.com/in/products/1071722>



LP 2,5/ 1 BU - Plug

1071727

<https://www.phoenixcontact.com/in/products/1071727>



Plug, nom. voltage: 800 V, nominal current: 24 A, number of positions: 1, connection method: Push-in connection, Rated cross section: 2.5 mm², cross section: 0.14 mm²- 4 mm², color: blue

LP 2,5/ 1 GNYE - Plug

1071728

<https://www.phoenixcontact.com/in/products/1071728>



Plug, nom. voltage: 800 V, nominal current: 24 A, number of positions: 1, connection method: Push-in connection, Rated cross section: 2.5 mm², cross section: 0.14 mm²- 4 mm², color: green-yellow

LP 2,5/11 - Plug

1071722

<https://www.phoenixcontact.com/in/products/1071722>



LP 2,5/ 1-L - Plug

1071729

<https://www.phoenixcontact.com/in/products/1071729>



Plug, nom. voltage: 800 V, nominal current: 24 A, number of positions: 1, connection method: Push-in connection, Rated cross section: 2.5 mm², cross section: 0.14 mm²- 4 mm², color: gray

LP 2,5/ 1-L BU - Plug

1071730

<https://www.phoenixcontact.com/in/products/1071730>



Plug, nom. voltage: 800 V, nominal current: 24 A, number of positions: 1, connection method: Push-in connection, Rated cross section: 2.5 mm², cross section: 0.14 mm²- 4 mm², color: blue

LP 2,5/11 - Plug

1071722

<https://www.phoenixcontact.com/in/products/1071722>



LP 2,5/ 1-L GNYE - Plug

1071731

<https://www.phoenixcontact.com/in/products/1071731>



Plug, nom. voltage: 800 V, nominal current: 24 A, number of positions: 1, connection method: Push-in connection, Rated cross section: 2.5 mm², cross section: 0.14 mm²- 4 mm², color: green-yellow

LP 2,5/ 1-M - Plug

1071732

<https://www.phoenixcontact.com/in/products/1071732>



Plug, nom. voltage: 800 V, nominal current: 24 A, number of positions: 1, connection method: Push-in connection, Rated cross section: 2.5 mm², cross section: 0.14 mm²- 4 mm², color: gray

LP 2,5/11 - Plug

1071722

<https://www.phoenixcontact.com/in/products/1071722>



LP 2,5/ 1-M BU - Plug

1071733

<https://www.phoenixcontact.com/in/products/1071733>



Plug, nom. voltage: 800 V, nominal current: 24 A, number of positions: 1, connection method: Push-in connection, Rated cross section: 2.5 mm², cross section: 0.14 mm²- 4 mm², color: blue

LP 2,5/ 1-M GNYE - Plug

1071734

<https://www.phoenixcontact.com/in/products/1071734>



Plug, nom. voltage: 800 V, nominal current: 24 A, number of positions: 1, connection method: Push-in connection, Rated cross section: 2.5 mm², cross section: 0.14 mm²- 4 mm², color: green-yellow

LP 2,5/11 - Plug

1071722

<https://www.phoenixcontact.com/in/products/1071722>



LP 2,5/ 1-R - Plug

1071735

<https://www.phoenixcontact.com/in/products/1071735>



Plug, nom. voltage: 800 V, nominal current: 24 A, number of positions: 1, connection method: Push-in connection, Rated cross section: 2.5 mm², cross section: 0.14 mm²- 4 mm², color: gray

LP 2,5/ 1-R BU - Plug

1071736

<https://www.phoenixcontact.com/in/products/1071736>



Plug, nom. voltage: 800 V, nominal current: 24 A, number of positions: 1, connection method: Push-in connection, Rated cross section: 2.5 mm², cross section: 0.14 mm²- 4 mm², color: blue

LP 2,5/11 - Plug

1071722

<https://www.phoenixcontact.com/in/products/1071722>



LP 2,5/ 1-R GNYE - Plug

1071737

<https://www.phoenixcontact.com/in/products/1071737>



Plug, nom. voltage: 800 V, nominal current: 24 A, number of positions: 1, connection method: Push-in connection, Rated cross section: 2.5 mm², cross section: 0.14 mm²- 4 mm², color: green-yellow

MPS-MT - Test plug

0201744

<https://www.phoenixcontact.com/in/products/0201744>



Test plug, with solder connection up to 1 mm² conductor cross section, number of positions: 1, color: gray

LP 2,5/11 - Plug

1071722

<https://www.phoenixcontact.com/in/products/1071722>



MPS-IH WH - Insulating sleeve

0201663

<https://www.phoenixcontact.com/in/products/0201663>

Insulating sleeve, color: white



MPS-IH RD - Insulating sleeve

0201676

<https://www.phoenixcontact.com/in/products/0201676>

Insulating sleeve, color: red



LP 2,5/11 - Plug

1071722

<https://www.phoenixcontact.com/in/products/1071722>

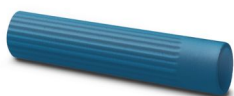


MPS-IH BU - Insulating sleeve

0201689

<https://www.phoenixcontact.com/in/products/0201689>

Insulating sleeve, color: blue



MPS-IH YE - Insulating sleeve

0201692

<https://www.phoenixcontact.com/in/products/0201692>

Insulating sleeve, color: yellow



LP 2,5/11 - Plug

1071722

<https://www.phoenixcontact.com/in/products/1071722>



MPS-IH GN - Insulating sleeve

0201702

<https://www.phoenixcontact.com/in/products/0201702>

Insulating sleeve, color: green



MPS-IH GY - Insulating sleeve

0201728

<https://www.phoenixcontact.com/in/products/0201728>

Insulating sleeve, color: gray



LP 2,5/11 - Plug

1071722

<https://www.phoenixcontact.com/in/products/1071722>



MPS-IH BK - Insulating sleeve

0201731

<https://www.phoenixcontact.com/in/products/0201731>

Insulating sleeve, color: black



ZBF 5:UNBEDRUCKT - Zack Marker strip, flat

0808642

<https://www.phoenixcontact.com/in/products/0808642>



Zack Marker strip, flat, Strip, white, unlabeled, can be labeled with: PLOTMARK, CMS-P1-PLOTTER, mounting type: latching, for terminal block width: 5 mm, Number of individual labels: 10, text field height: 5.15 mm, text field width: 5.15 mm

LP 2,5/11 - Plug

1071722

<https://www.phoenixcontact.com/in/products/1071722>



ZBF 5 CUS - Zack Marker strip, flat

0825025

<https://www.phoenixcontact.com/in/products/0825025>



Zack Marker strip, flat, can be ordered: Strip, white, labeled according to customer specifications, mounting type: snap into flat marker groove, for terminal block width: 5 mm, Number of individual labels: 10, text field height: 5.15 mm, text field width: 5.15 mm

ZBF 5,LGS:FORTL.ZAHLEN - Zack Marker strip, flat

0808671

<https://www.phoenixcontact.com/in/products/0808671>



Zack Marker strip, flat, Strip, white, labeled, printed horizontally: consecutive numbers 1 ... 10, 11 ... 20, etc. up to 491 ... 500, mounting type: latching, for terminal block width: 5 mm, Number of individual labels: 10, text field height: 5.15 mm, text field width: 5.15 mm

LP 2,5/11 - Plug

1071722

<https://www.phoenixcontact.com/in/products/1071722>



ZBF 5,QR:FORTL.ZAHLEN - Zack Marker strip, flat

0808697

<https://www.phoenixcontact.com/in/products/0808697>



Zack Marker strip, flat, Strip, white, labeled, Printed vertically: consecutive numbers 1 ... 10, 11 ... 20, etc. up to 91 ... 100, mounting type: latching, for terminal block width: 5 mm, Number of individual labels: 10, text field height: 5.15 mm, text field width: 5.15 mm

ZBF 5,LGS:GERADE ZAHLEN - Zack Marker strip, flat

0810821

<https://www.phoenixcontact.com/in/products/0810821>



Zack Marker strip, flat, Strip, white, labeled, printed horizontally: consecutive even numbers 2 ... 20, 22 ... 40, etc. up to 82 ... 100, mounting type: latching, for terminal block width: 5 mm, Number of individual labels: 10, text field height: 5.15 mm, text field width: 5.15 mm

LP 2,5/11 - Plug

1071722

<https://www.phoenixcontact.com/in/products/1071722>



ZBF 5,LGS:UNGERADE ZAHLEN - Zack Marker strip, flat

0810863

<https://www.phoenixcontact.com/in/products/0810863>



Zack Marker strip, flat, Strip, white, labeled, printed horizontally: Odd numbers 1 - 19, 21 - 39, etc. up to 81 - 99, mounting type: latching, for terminal block width: 5 mm, Number of individual labels: 10, text field height: 5.15 mm, text field width: 5.15 mm

UC-TMF 5 - Marker for terminal blocks

0818153

<https://www.phoenixcontact.com/in/products/0818153>



Marker for terminal blocks, Sheet, white, unlabeled, can be labeled with: BLUEMARK ID COLOR, BLUEMARK ID, BLUEMARK CLED, PLOTMARK, CMS-P1-PLOTTER, mounting type: latching, for terminal block width: 5.2 mm, Number of individual labels: 96, text field height: 5.1 mm, text field width: 4.6 mm

LP 2,5/11 - Plug

1071722

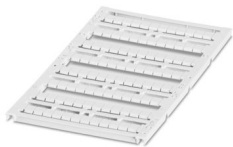
<https://www.phoenixcontact.com/in/products/1071722>



UC-TMF 5 CUS - Marker for terminal blocks

0824638

<https://www.phoenixcontact.com/in/products/0824638>



Marker for terminal blocks, can be ordered: by sheet, white, labeled according to customer specifications, mounting type: snap into flat marker groove, for terminal block width: 5.2 mm, Number of individual labels: 96, text field height: 5.1 mm, text field width: 4.6 mm

UCT-TMF 5 - Marker for terminal blocks

0828744

<https://www.phoenixcontact.com/in/products/0828744>



Marker for terminal blocks, Sheet, white, unlabeled, can be labeled with: TOPMARK NEO, TOPMARK LASER, BLUEMARK ID COLOR, BLUEMARK ID, BLUEMARK CLED, THERMOMARK PRIME, THERMOMARK CARD 2.0, THERMOMARK CARD, mounting type: latching, for terminal block width: 5.2 mm, Number of individual labels: 72, text field height: 4.7 mm, text field width: 4.4 mm

LP 2,5/11 - Plug

1071722

<https://www.phoenixcontact.com/in/products/1071722>



UCT-TMF 5 CUS - Marker for terminal blocks

0829658

<https://www.phoenixcontact.com/in/products/0829658>



Marker for terminal blocks, can be ordered: by sheet, white, labeled according to customer specifications, mounting type: snap into flat marker groove, for terminal block width: 5.2 mm, Number of individual labels: 72, text field height: 4.7 mm, text field width: 4.4 mm

ISH 2,5/0,2 - Insulating sleeve

3002843

<https://www.phoenixcontact.com/in/products/3002843>



Insulating sleeve, color: white

LP 2,5/11 - Plug

1071722

<https://www.phoenixcontact.com/in/products/1071722>



ISH 2,5/0,5 - Insulating sleeve

3002856

<https://www.phoenixcontact.com/in/products/3002856>



Insulating sleeve, color: gray

ISH 2,5/1,0 - Insulating sleeve

3002869

<https://www.phoenixcontact.com/in/products/3002869>



Insulating sleeve, color: black

Phoenix Contact 2025 © - all rights reserved

<https://www.phoenixcontact.com>

PHOENIX CONTACT (I) Pvt. Ltd.

A-58/2, Okhla Industrial Area, Phase - II, New Delhi-110 020

+91.1275.71420

info@phoenixcontact.co.in