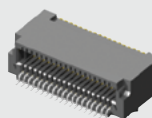
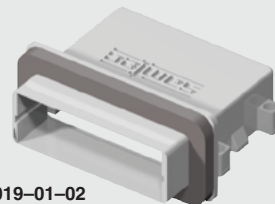


ERI8-019-S-D-RA



ERC-019-01-02



(0.80 mm) .0315"

ERI8, ERC SERIES

HIGH-SPEED I/O SYSTEM

ERI8 Mates with:
EPLSP

SPECIFICATIONS

For complete specifications and recommended PCB layouts see www.samtec.com?ERI8

Insulator Material:
Black LCP

Terminal Material:
BeCu

Plating:

Au or Sn over

50 μ " (1.27 μ m) Ni

Current Rating:

1.7 A per pin

(2 pins powered)

Voltage Rating:

225 VAC/320 VDC

Operating Temp Range:

-55 °C to +125 °C

Lead-Free Solderable:

Yes

SMT Lead Coplanarity:

(0.10 mm) .004" max

RoHS Compliant:

Yes

Notes:

Active equalization reference design for Eye Speed[®] I/O system see www.samtec.com?EPLSP

Some lengths, styles and options are non-standard, non-returnable.

**EDGE
RATE[®]**
CONTACT

ERI8

NO. OF
POSITIONSPLATING
OPTION

D

RA

OTHER
OPTION

-019

= 9 Pairs, 5 Power,
19 positions

-031

= 17 Pairs, 5 Power,
31 positions

-S

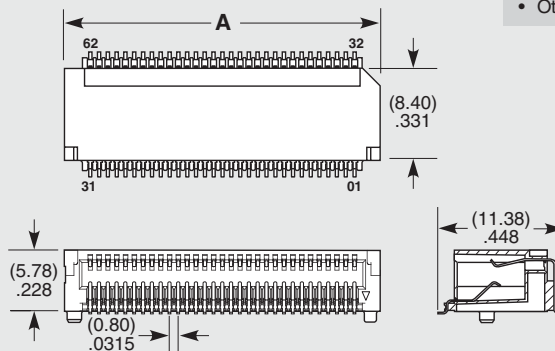
= 30 μ " (0.76 μ m) Gold on contact,
Matte Tin on tail

-TR

= Tape & Reel
Packaging
ALSO AVAILABLE
(MOQ Required)

- Other platings

NO. OF POSITIONS	A
-019	(19.08) .751
-031	(28.68) 1.13



SPECIFICATIONS

For complete specifications and recommended PCB layouts see www.samtec.com?ERC

TYPE

NO. OF
POSITIONS

01

OPTION

ERC
= Cage

-019, -031

= Number of Positions

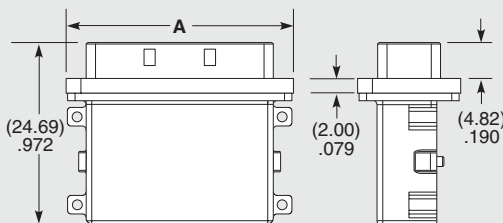
-01

= Without Gasket

-02

= With Gasket

NO. OF POSITIONS	A
-019	(30.55) 1.203
-031	(40.15) 1.58



Due to technical progress, all designs, specifications and components are subject to change without notice.

WWW.SAMTEC.COM

All parts within this catalog are built to Samtec's specifications.

Customer specific requirements must be approved by Samtec and identified in a Samtec customer-specific drawing to apply.