



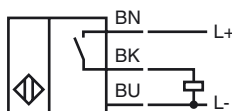
### Model Number

NMB5-18GM55-E2-FE

### Features

- Stainless steel sensing face
- Sensing range 5 mm
- 3-wire DC
- Ferrous targets

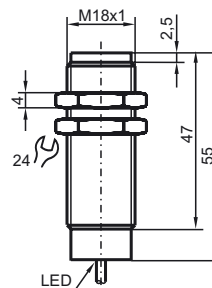
### Connection



### Accessories

**AB-18**  
Mounting aid

## Dimensions



## Technical Data

### General specifications

Switching element function	PNP	NO
Rated operating distance	$s_n$	5 mm
Installation		flush
Output polarity		DC
Assured operating distance	$s_a$	0 ... 4.05 mm
Actuating element		Ferrous targets
Reduction factor $r_{Al}$		0
Reduction factor $r_{Cu}$		0
Reduction factor $r_{304}$		0.8
Reduction factor $r_{St37}$		1

### Nominal ratings

Operating voltage	$U_B$	10 ... 30 V DC
Switching frequency	$f$	15 Hz
Hysteresis	$H$	3 ... 15 typ. 5 %
Reverse polarity protected		yes
Short-circuit protection		yes
Voltage drop	$U_d$	$\leq 2$ V
Operating current	$I_L$	$\leq 100$ mA
Current consumption		$< 14$ mA
Off-state current	$I_r$	$\leq 10$ $\mu$ A

### Functional safety related parameters

MTTF <sub>d</sub>	990 a
Mission Time ( $T_M$ )	20 a
Diagnostic Coverage (DC)	0 %

### Indicators/operating means

Operating display	Dual LED
	Green: power
	Yellow: output

### Ambient conditions

Ambient temperature	-40 ... 70 °C (-40 ... 158 °F)
---------------------	--------------------------------

### Mechanical specifications

Connection type	2 m PUR cable
Core cross-section	0.5 mm <sup>2</sup>
Housing material	Stainless steel 1.4305 / AISI 303
Sensing face	Stainless steel 1.4305 / AISI 303
Protection degree	IP69K

### Compliance with standards and directives

Standard conformity	
Standards	EN 60947-5-2:2007 IEC 60947-5-2:2007

### Approvals and certificates

UL approval	cULus Listed, General Purpose
CSA approval	cCSAus Listed, General Purpose
CCC approval	Products with a maximum operating voltage of $\leq 36$ V do not bear a CCC marking because they do not require approval.