

FEATURES

- Made up of durable, hardwearing polyamide non-chip materials
- Concealed Fixings
- Professional, matt black finish
- 168 x 58 x 29 mm dimensions
- The fixing centers are 150 mm apart
- Easy to clean and maintain
- Brass threaded inserts for fixing with screws from below

RS PRO Matte Black Plastic Concealed Fixings Drawer Handle, 168mm

RS Stock No.: 456-513



RS Professionally Approved Products bring to you professional quality parts across all product categories. Our product range has been tested by engineers and provides a comparable quality to the leading brands without paying a premium price.

Product Description

Our own brand, RS Pro reinforced nylon drawer handles are also comprised of fiberglass and feature threaded brass inserts. Our drawer handles are pieces of door hardware that are commonly attached to the outside of a drawer, cabinet or cupboard - this is to allow a user to easily open or pull and close the door or drawer to access the contents inside

General Specifications

Material	Plastic
Finish	Matte
Concealed Fixings	Yes
Colour	Black
Insert Material	Brass
Application	Drawer handles can be used on both cabinet draws and cupboard doors

Mechanical Specifications

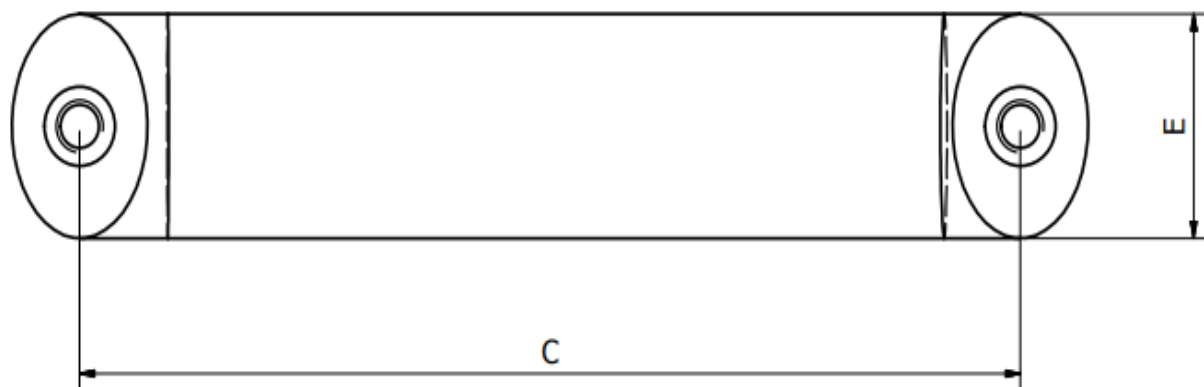
Length	168mm
Height	58 mm
Width	29mm
Fixing Centres	150mm
Thread Type	M8
Weight	128.1g

Approvals

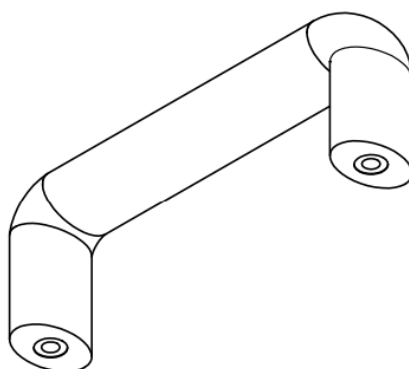
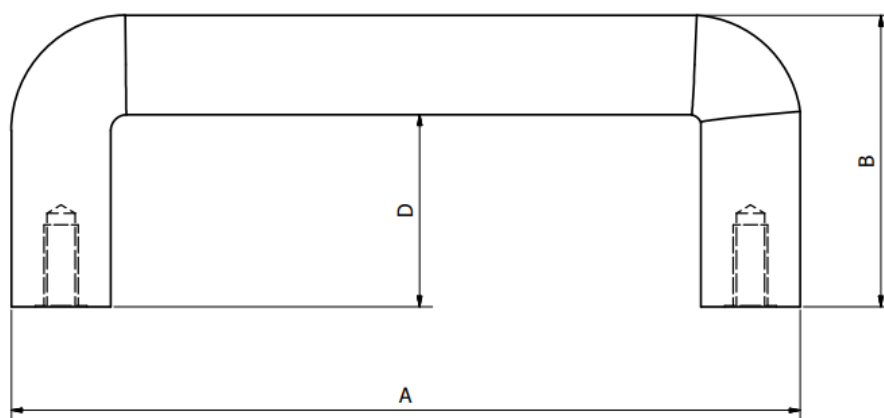
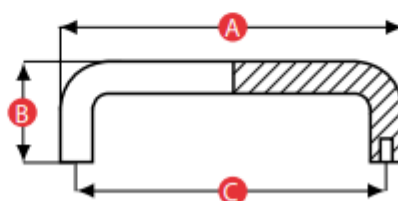
Compliance/Certifications	2011/65/EU and 2015/863
----------------------------------	-------------------------



TABLE						
RS Part No	A	B	C	D	E	Thread Spec
456551	107	40	94	29	10	M5
456557	134	50	117	34	25	M6
456563	137	50	120	34	25	M6
456529	148	50	132	34	25	M6
456513	168	58	150	40	29	M8
456523	197	58	179	40	29	M8



Bridge Handle Model 07 - Nylon - Concealed



PATTERN	PART NO.	A	B	C	D	THREAD SIZE	WEIGHT (g)
65094	456551	107	40.5	94	20	M5	42.9
65117	456557	134	50	117	25	M6	84.5
65120	456563	137	50	120	25	M6	86.5
65132	456529	148	50	132	25	M6	92.5
65150	456513	168	58	150	29	M8	128.1
65179	456523	197	58	179	29	M8	286.0

Material: 15% glass filled nylon (PA6)
 Insert Material: Brass
 Standard Colour: Black
 Available colours: A wide range of RAL colours can be produced
 - MOQs apply

All dimensions are in mm (unless otherwise stated) and are approximate. All weights are in grams and are approximate.