

Product datasheet

Specifications



Emergency stop switching off,
Harmony XB4, metal, red mushroom
40mm, 22mm, trigger turn to
release, 2NC, compact push in

XB4BS84445

EAN Code: 3606486341599

Main

| | |
|-------------------------------|--|
| Range of product | Harmony XB4 |
| Product or component type | Emergency switching off push-button Emergency stop push-button |
| Device short name | XB4 |
| Bezel material | Chromium plated metal |
| Fixing collar material | Zamak |
| Mounting diameter | 22.5 mm |
| Sale per indivisible quantity | 1 |
| Shape of signaling unit head | Round |
| Type of operator | trigger action and mechanical latching |
| Head type | Standard |
| Reset | Turn to release |
| Operator profile | Red mushroom Ø 40 mm, unmarked |
| Contact operation | Slow-break |
| Connections - terminals | Push-in, <= 2 x 1.5 mm ² with wire end ferrule conforming to IEC 60947-1 Push-in, >= 1 x 0.34 mm ² without wire end ferrule conforming to IEC 60947-1 |

Complementary

| | |
|------------------------------------|--|
| Height | 47 mm |
| Width | 40 mm |
| Depth | 73.2 mm |
| Terminals description ISO n°1 | (21-22)NC |
| Net weight | 0.122 kg |
| Resistance to high pressure washer | 7000000 Pa at 55 °C, distance : 0.1 m |
| Device mounting | Fixing hole - diameter: 22.5 mm +/- 0.2 mm |
| Fixing mode | By fixing collar recommended torque: 1 N.m (+/- 0.2 N.m) |
| Positive opening | With conforming to IEC 60947-5-1 appendix K |
| Operating travel | 1.217 mm (NC changing electrical state) 4.3 mm (total travel) |
| Operating force | 4.5 N |
| Mechanical durability | 300000 cycles |
| Contacts material | Silver alloy (Ag/Ni) |

| | |
|---|--|
| Short-circuit protection | 10 A cartridge fuse type gG conforming to IEC 60947-5-1 |
| [I_{th}] conventional free air thermal current | 10 A conforming to IEC 60947-5-1 |
| [U_i] rated insulation voltage | 300 V (pollution degree 3) conforming to IEC 60947-1 |
| [U_{imp}] rated impulse withstand voltage | 4 kV conforming to IEC 60947-1 |
| [I_e] rated operational current | 6 A at 120 V, AC-15, A300 conforming to IEC 60947-5-1 3 A at 240 V, AC-15, A300 conforming to IEC 60947-5-1 0.55 A at 125 V, DC-13, Q300 conforming to IEC 60947-5-1 0.27 A at 250 V, DC-13, Q300 conforming to IEC 60947-5-1 |
| Device presentation | Complete product |

Environment

| | |
|--|---|
| Protective treatment | TH |
| Ambient air temperature for storage | -40...70 °C |
| Ambient air temperature for operation | -25...70 °C |
| Electrical shock protection class | Class I conforming to IEC 60536 |
| IP degree of protection | IP66 conforming to IEC 60529 IP67 IP69 IP69K |
| NEMA degree of protection | NEMA 13 NEMA 4X |
| IK degree of protection | IK06 conforming to IEC 50102 |
| Standards | IEC 60947-1 IEC 60947-5-1 IEC 60947-5-4 IEC 60947-5-5 UL 60947-1 UL 60947-5-1 UL 60947-5-5 UL 1059 UL 486E CSA C22.2 No 60947-1 CSA C22.2 No 60947-5-1 CSA C22.2 No 158 CSA C22.2 No 65 IACS E10 IEC 60204-1 ISO 13850 IEC 60364-5-53 |
| Product certifications | EAC IECEE CB Scheme CCC UL CSA |

| | |
|-----------------------------|---|
| Vibration resistance | 5 gn (f= 10...500 Hz) conforming to IEC 60068-2-6 25 mm peak to peak (f= 2...10 Hz) conforming to IEC 60068-2-6 |
| Shock resistance | 25 gn (duration = 6 ms) for 1000 shocks on each axis conforming to IEC 60068-2-27 30 gn (duration = 18 ms) for half sine wave acceleration conforming to IEC 60068-2-27 50 gn (duration = 11 ms) for half sine wave acceleration conforming to IEC 60068-2-27 |

Packing Units

| | |
|-------------------------------------|----------|
| Unit Type of Package 1 | PCE |
| Number of Units in Package 1 | 1 |
| Package 1 Height | 4.064 cm |

| | |
|------------------|-----------|
| Package 1 Width | 5.334 cm |
| Package 1 Length | 8.890 cm |
| Package 1 Weight | 122.470 g |

Logistical informations

| | |
|-------------------|----|
| Country of origin | FR |
|-------------------|----|

Contractual warranty

| | |
|----------------------|----|
| Warranty (in months) | 18 |
|----------------------|----|



Environmental Data

Schneider Electric aims to achieve Net Zero status by 2050 through supply chain partnerships, lower impact materials, and circularity via our ongoing “Use Better, Use Longer, Use Again” campaign to extend product lifetimes and recyclability.

[Environmental Data explained >](#)

[How we assess product sustainability >](#)



Environmental footprint

| | |
|--|---|
| Total lifecycle Carbon footprint | 1 kg CO2 eq. |
| Carbon footprint of the manufacturing phase [A1 to A3] | 1 kg CO2 eq. |
| Carbon footprint of the distribution phase [A4] | 0 kg CO2 eq. |
| Carbon footprint of the installation phase [A5] | 0 kg CO2 eq. |
| Carbon footprint of the use phase [B2, B3, B4, B6] | 0 kg CO2 eq. |
| Carbon footprint of the end-of-life phase [C1 to C4] | 0 kg CO2 eq. |
| Environmental Disclosure | Product Environmental Profile |

Use Better



Materials and Substances

| | |
|--|---|
| Packaging made with recycled cardboard | No |
| Packaging without single use plastic | No |
| EU RoHS Directive | Compliant |
| REACH Regulation | Free of Substances of Very High Concern above the threshold |

Use Longer



Lifetime extension

| | |
|--------|----|
| Repair | No |
|--------|----|

Use Again

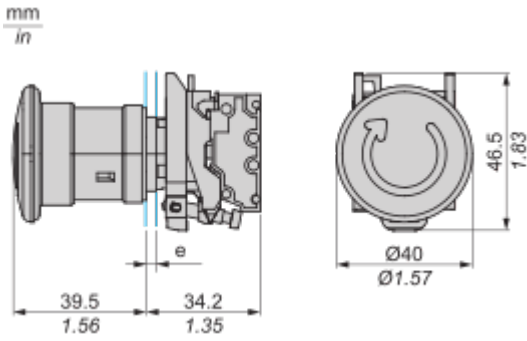


Repack and remanufacture

| | |
|---------------------------------|---|
| End of life manual availability | End of Life Information |
| Take-back | Nej |
| WEEE Label |  The product must be disposed on European Union markets following specific waste collection and never end up in rubbish bins |

Dimensions Drawings

Dimensions



e : Clamping thickness: 1 to 6 mm / 0.04 to 0.24 in.

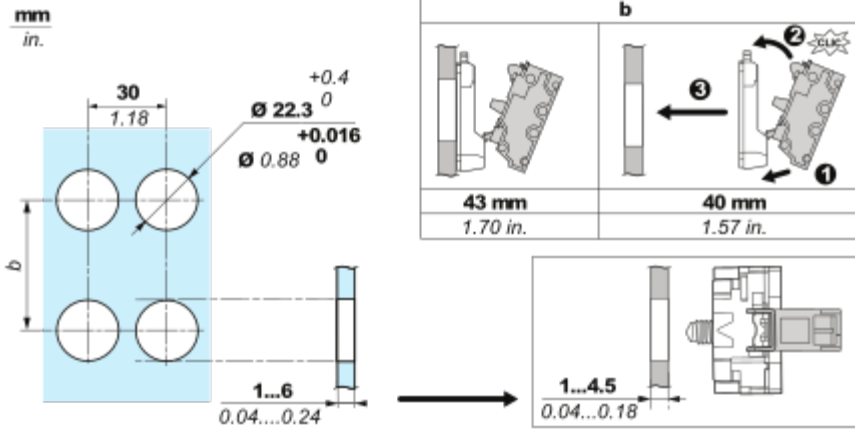
Mounting and Clearance

Mounting

Mounting and Unmounting



Panel cut-out Dimension



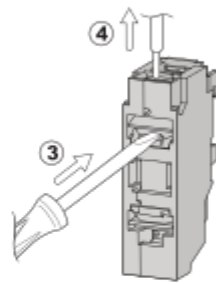
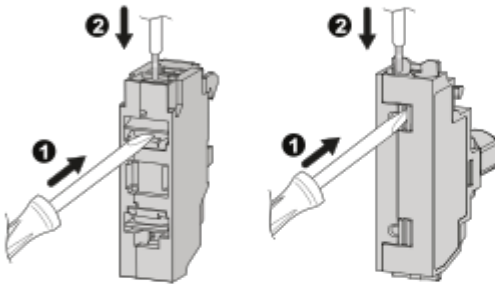
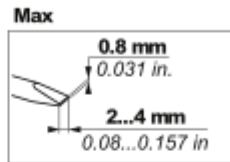
Connections and Schema

Wiring

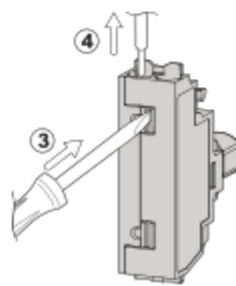
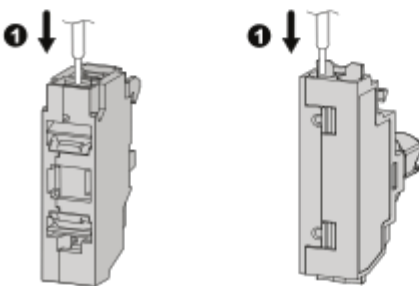
Wiring and Unwiring



| | |
|-----------------|------------|
| mm | 8 |
| in. | 0.32 |
| mm ² | 0.34...1.5 |
| AWG | 22...16 |

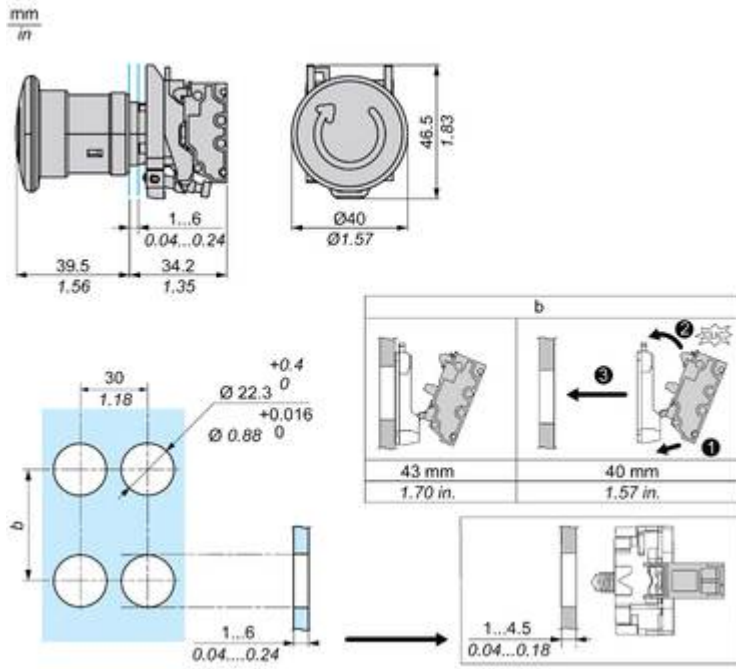


| | | | | |
|-----------------|------------|----------|------------|----------|
| mm | 8 | 8 | 8 | (1) Max |
| in. | 0.32 | 0.32 | 0.32 | |
| mm ² | 0.34...1.5 | 0.34...1 | 0.34...1.5 | 1.9 mm |
| AWG | 22...16 | 22...18 | 22...16 | 0.07 in. |
| | | 2.4 mm | | 0.09 in. |



Technical Illustration

Dimensions



Technical Illustration

Wiring diagram

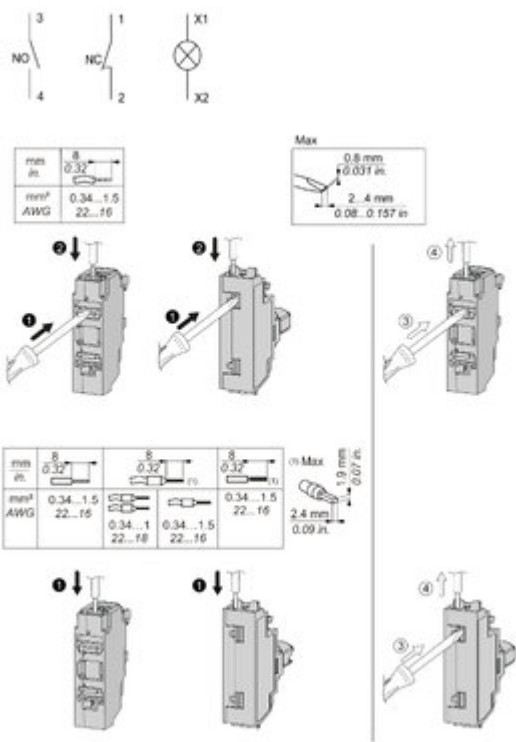


Image of product / Alternate images

Alternative

