

## FEATURES

- Shielded RJ45 female connector

Can be mounted to the panel from the inside (rear mount) or outside

Fits standard XLR Ø24mm cutout

- Straight orientation
- No soldering or punch termination
- Low rear profile
- Complies with standards ANSI/ESD S20.20:2014 and BS EN 61340-5-1:2007
- Adheres to RoHS (restriction of hazardous substances) standards

## RS PRO, Female RJ45 Connector

RS Stock No.: 175-0145



RS Professionally Approved Products bring to you professional quality parts across all product categories. Our product range has been tested by engineers and provides a comparable quality to the leading brands without paying a premium price.

### Product Description

This female RJ45 connector from RS PRO is typically used to connect computers to Ethernet-based local area networks (LAN). RJ45 connectors are a reliable way to transmit data quickly between computers, switches, routers and printers.

This connector is shielded for effective grounding as well as reduction of noise and crosstalk, making it suitable for office and industrial settings. The low rear profile of this model makes it ideal for use in places where space is limited, such as data centres. Its phosphor bronze contacts are first nickel-plated and then gold-plated, so they are extra durable and protected against corrosion. Likewise, the sturdy die-cast zinc frame is black plated to stop it from rusting.

### General Specifications

<b>Ethernet Connector Type</b>	RJ45 Connector
<b>Gender</b>	Female
<b>Number of Ports</b>	1
<b>Number of Ways</b>	1
<b>Connector Type</b>	RJ45
<b>Shield Type</b>	Shielded
<b>Orientation</b>	Straight
<b>Contact Material</b>	Phosphor Bronze
<b>Contact Plating</b>	Gold plating over nickel plate
<b>Flammability rating</b>	UL94V0
<b>Jack</b>	3-50 micro gold plated
<b>Housing</b>	ABS, UL 94V-0
<b>PCB</b>	FR4, UL 94V-0
<b>Colour</b>	Black
<b>Applications</b>	Wireless outdoor AP, Outdoor LED and display lighting, Marine, Machine automation, Military

### Mechanical Specifications

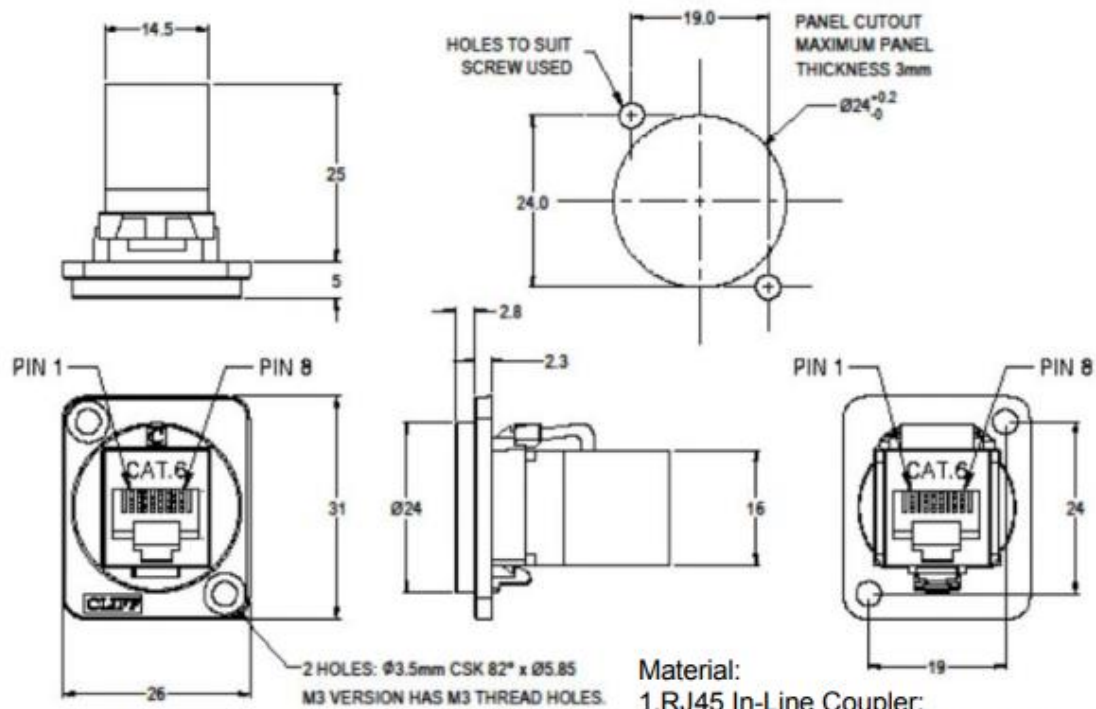
<b>Mounting Type</b>	Panel Mount
----------------------	-------------

## Approvals

### Compliance/Certifications

RoHS (restriction of hazardous substances) standards, ANSI/ESD S20.20:2014 and BS EN 61340-5-1:2007





## Performance:

- a. T568A & T568B wiring.
- b. Meet ISO/IEC 11801 and EN50173
- c. Meet ANSI/TIA/EIA 568B.2

[rspro.com](https://rspro.com)

## Material:

- 1. RJ45 In-Line Coupler: ABS, UL 94V-0, Black colour, Fully shielded
- 2. RJ45 In-Line Coupler Contact: Phosphor Bronze, 3-50 micro inches gold plating over nickel plate.
- 3. PCB: FR4, UL 94V-0
- 4. Frame: Nickel or black plated zinc diecast