



111SM1-T



Actual product appearance may vary.

SM Series Subminiature Basic Switch, Single Pole Double Throw (SPDT), 250 Vac, 5 A, Straight Lever Actuator, Solder Termination

Features

- Long operating life
- Elongated mounting hole for easier, more accurate mounting
- Choice of actuation (plunger, as well as a variety of integral and auxiliary actuators)
- Choice of electrical termination (solder, quick connect, PCB)
- Choice of operating characteristics (sensitive differential travel as low as 0,0254 mm [0.001 in] maximum, low operating force to 0,56 N [2.0 oz] maximum)
- Optional series constructions available (gold contacts for low energy switching, bifurcated gold contacts for maximum reliability, power load switching capability to 11 A)
- MIL-PFR-8805 qualified listings available

Potential Applications

- Aerospace
- Instrumentation
- Appliances
- Vending machines
- Timing devices
- Office equipment
- Computer/business equipment
- Test instruments
- Medical/dental equipment
- Communications equipment
- HVAC equipment
- Manually operated devices
- Valves

Description

MICRO SWITCH™ SM Series subminiature basic switches are used for simple or precision on/off application needs. The MICRO SWITCH™ SM Series switches are slightly larger than the MICRO SWITCH™ SX Series switches. These switches combine small size and light weight with ample electrical capacity, precision operation and long life.

Product Specifications

Product Specifications	
Switch Type	MICRO SWITCH™ Subminiature 12,7 mm H x 6,35 mm W x 20,3 mm L [0.5 in H x 0.25 in W x 0.8 in L]
Sealed	No
Ampere Rating	5 A
Circuitry	Single Pole Double Throw (SPDT)
Actuator	Straight Lever
Termination	Solder

Operating Temperature Range	-55 °C to 125 °C [-67 °F to 257 °F]
Voltage	250 Vac
Approvals	CE,CSA,UL,ENEC
Actuator Length	4,83 mm [0.19 in]
Contact Type	Silver
Operating Force (O.F.)	1,95 N [7.0 oz] max.
Release Force (R.F.)	0,56 N [2.0 oz] min.
Pretravel (P.T.)	5,54 mm [0.218 in] max.
Overtravel (O.T.)	0,76 mm [0.030 in]
Differential Travel (D.T.)	0,76 mm [0.030 in] max.
Operating Position (O.P.)	8,89 mm ± 0,76 mm [0.350 in ± 0.030 in]
Housing Material	General Purpose Phenolic
High Temperature	204 °C [400 °F]
CE mark	61058-1
UL File #	E12252
CSA File #	LR41372
Agency Approvals and Standards	1054
Mounting Screw Size	22,1 mm [0.087 in]
Mounting Centers	9,65 mm [0.38 in]
Maximum Tightening Torque	0,26 N m [2.3 in lb]
Weight	2,72 g [0.006 lb]
Package Height	12,4 mm [0.49 in]
Package Width	6,35 mm [0.25 in]
Package Length	19,8 mm [0.78 in]
Recommended For	Force and stability of flexible leaf actuator
Availability	Global
UNSPSC Code	30211905
UNSPSC Commodity	30211905 Snap switches
Series Name	SM

MICRO SWITCH

A DIVISION OF MINNEAPOLIS-HONEYWELL REGULATOR COMPANY
 FREEPORT, MINNESOTA

FED. MFR. CODE 91929

SWITCH - BASIC

CATALOG LISTING
111SM1 - T

DRAWING NUMBER
111SM1 - T

ISSUE
M

PAGE 1 OF 1

REPLACES
 RELEASE NO. SR-7729

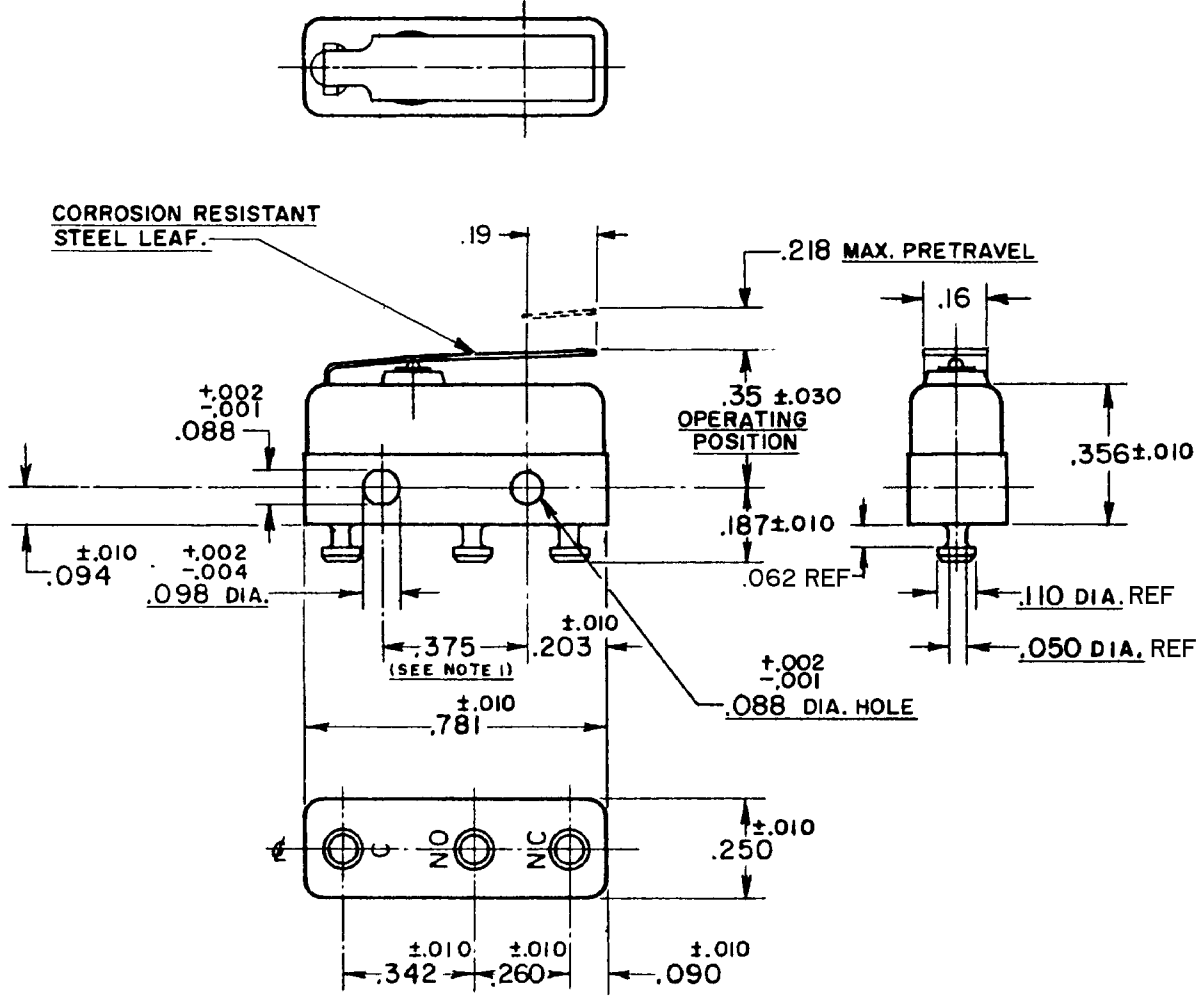
CHECK K.F.M. 11 AUG 58

CHECK K.F.M. 13 AUG 58

CHECK S.K. 13 AUG 58

CHECK G.C.H. 19 AUG 58

REV	NO	DATE	BY	DESCRIPTION
A	CO12747	2 SEPT 58	R. J. G.	
B	CO14611	2 MAY 60	I. Y. O.	
C	CO18117	26 JUN 63	J. A. N.	
D	CO24706	28 SEPT 68	G. F. S.	
E	CO29449	12 SEPT 72	R. C. R.	
F	CO-77768	12 JUL 94	S. A. D.	
G	CO79612	11 APR 95	S. A. D.	
H	CO-95172	17 JUNE 99	J. J. A.	



- NOTES**
- 1- MOUNTING HOLES WILL ACCEPT PINS OR SCREWS OF .087 MAX. DIA. ON .375 ± .002 CENTERS.
 - 2- TERMINALS ARE PLATED FOR SOLDERING.

THIS DRAWING COVERS A PROPRIETARY ITEM AND IS THE PROPERTY OF MICRO SWITCH, A DIVISION OF MINNEAPOLIS-HONEYWELL REGULATOR CO. THIS DRAWING IS NOT TO BE COPIED OR USED WITHOUT THE APPROVAL OF MICRO SWITCH.

CHARACTERISTICS	ELECTRICAL DATA	SCALE 2 TO 1
OPERATING FORCE ----- 7 OZ. MAX.	CONTACT ARRANGEMENT S. P. D. T.	DO NOT SCALE PRINT
RELEASE FORCE ----- 2 OZ. MIN.	30 VOLTS DC RATING INDUCTIVE ----- SEA LEVEL ----- 3 AMP 50,000 FT. ----- 2.5 AMP	UNLESS OTHERWISE SPECIFIED DIMENSIONS ARE IN INCHES
DIFFERENTIAL TRAVEL ----- .030 MAX.	RESISTIVE ----- SEA LEVEL ----- 5 AMP 50,000 FT. ----- 5 AMP	TOLERANCES ARE:
OVERTRAVEL ----- .030 MIN.	MAXIMUM INRUSH ----- 24 AMP	ONE PLACE (.0) ±.030 TWO PLACE (.00) ±.015 THREE PLACE (.000) ±.008 ANGLES ±
	L4 5A 250 VAC ~	WEIGHT .006 LB MAX

FORMTEK
 FO-50378
 DRAWN
 K.L.B. 8, AUG. '58