

SUBMINIATURE SIGNAL RELAY



File No.:E133481



Features

- Offers excellent board space savings
- Surge withstand voltage up to 1500V, meets FCC Part 68
- High contact capacity 1A 30VDC
- Low power consumption
- Single side stable and latching type available
- Single or double coil winding type available
- Environmental friendly product (RoHS compliant)
- Outline Dimensions: (14.0 x 9.0 x 5.0) mm

CONTACT DATA

Contact arrangement	2C
Contact resistance	100mΩ
Contact material	Silver alloy+Gold clad
Contact rating (Res. load)	1A 30VDC 0.5A 125VAC
Max. switching current	1A
Max. switching voltage	125VAC/110VDC
Max. switching power	62.5VA / 30W
Min. applicable load	10mV 10μA
Mechanical endurance	1 x 10 ⁸ OPS
Electrical endurance	2 x 10 ⁵ OPS (at 1A 30VDC) 1 x 10 ⁵ OPS (at 0.5A 125VAC)

CHARACTERISTICS

Insulation resistance		1000MΩ (at 500VDC)
Dielectric strength	Between coil & contacts	1000VAC 1min
	Between open contacts	750VAC 1min
	Between contact sets	1000VAC 1min
Surge withstand voltage Between open contacts (10×160μs)		1500VAC (FCC part 68)
Operate time (Set time)		3ms max.
Release time (Reset time)		3ms max.
Ambient temperature		-40°C to 70°C
Humidity		98% RH, 40 °C
Vibration resistance	Functional	10Hz to 55Hz 3.0mm DA
	Destructive	10Hz to 55Hz 5.0mm DA
Shock resistance	Functional	490m/s ²
	Destructive	980m/s ²
Termination		DIP, SMT
Unit weight		Approx. 1.5g
Construction		Plastic sealed

Notes: The data shown above are initial values.

COIL

Coil power	Single side stable	140mW (24VDC: 200mW)
	1 coil latching	100mW (24VDC: 150mW)
	2 coils latching	200mW (24VDC: 300mW)

SAFETY APPROVAL RATINGS

UL/CUL	1A 30VDC 0.5A 125VAC
--------	-------------------------

Notes: Only some typical ratings are listed above. If more details are required, please contact us.

COIL DATA

at 23°C

Single side stable

Order Number	Nominal Voltage VDC	Pick-up Voltage VDC	Drop-out Voltage VDC	Coil Resistance Ω	Nominal Power mW	Max. Allowable Voltage VDC
HFD31/1.5	1.5	1.13	0.15	16 x (1 \pm 10%)	140	2.25
HFD31/2.4	2.4	1.8	0.24	41.3 x (1 \pm 10%)	140	3.6
HFD31/3	3	2.25	0.3	64.3 x (1 \pm 10%)	140	4.5
HFD31/4.5	4.5	3.38	0.45	145 x (1 \pm 10%)	140	6.7
HFD31/5	5	3.75	0.5	178 x (1 \pm 10%)	140	7.5
HFD31/6	6	4.5	0.6	257 x (1 \pm 10%)	140	9
HFD31/9	9	6.75	0.9	579 x (1 \pm 10%)	140	13.5
HFD31/12	12	9	1.2	1028 x (1 \pm 10%)	140	18
HFD31/24	24	18	2.4	2880 x (1 \pm 10%)	200	36

1 coil latching

Order Number	Nominal Voltage VDC	Set Voltage VDC	Reset Voltage VDC	Coil Resistance Ω	Nominal Power mW	Max. Allowable Voltage VDC
HFD31/1.5-L1	1.5	1.13	1.13	22.5 x (1 \pm 10%)	100	2.25
HFD31/2.4-L1	2.4	1.8	1.8	58 x (1 \pm 10%)	100	3.6
HFD31/3-L1	3	2.25	2.25	90 x (1 \pm 10%)	100	4.5
HFD31/4.5-L1	4.5	3.38	3.38	203 x (1 \pm 10%)	100	6.7
HFD31/5-L1	5	3.75	3.75	250 x (1 \pm 10%)	100	7.5
HFD31/6-L1	6	4.5	4.5	360 x (1 \pm 10%)	100	9
HFD31/9-L1	9	6.75	6.75	810 x (1 \pm 10%)	100	13.5
HFD31/12-L1	12	9	9	1440 x (1 \pm 10%)	100	18
HFD31/24-L1	24	18	18	3840 x (1 \pm 10%)	150	36

2 coils latching

Order Number	Nominal Voltage VDC	Set Voltage VDC	Reset Voltage VDC	Coil Resistance Ω	Nominal Power mW	Max. Allowable Voltage VDC
HFD31/1.5-L2	1.5	1.13	1.13	11.3 x (1 \pm 10%)	200	2.25
HFD31/2.4-L2	2.4	1.8	1.8	29 x (1 \pm 10%)	200	3.6
HFD31/3-L2	3	2.25	2.25	45 x (1 \pm 10%)	200	4.5
HFD31/4.5-L2	4.5	3.38	3.38	101 x (1 \pm 10%)	200	6.7
HFD31/5-L2	5	3.75	3.75	125 x (1 \pm 10%)	200	7.5
HFD31/6-L2	6	4.5	4.5	180 x (1 \pm 10%)	200	9.0
HFD31/9-L2	9	6.75	6.75	405 x (1 \pm 10%)	200	13.5
HFD31/12-L2	12	9	9	720 x (1 \pm 10%)	200	18
HFD31/24-L2	24	18	18	1920 x (1 \pm 10%)	300	36

Notes: When user's requirements can't be found in the above table, please counsel with Hongfa for relay application support.

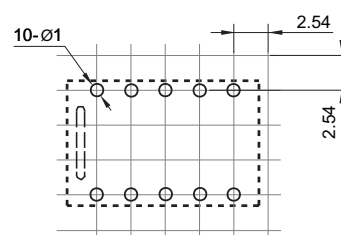
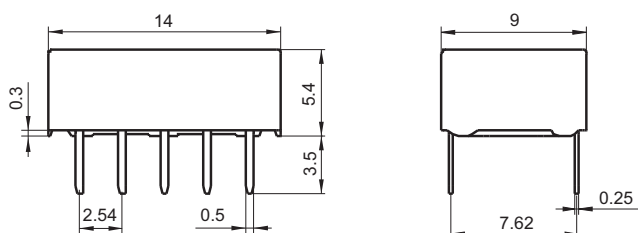
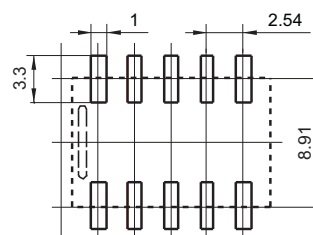
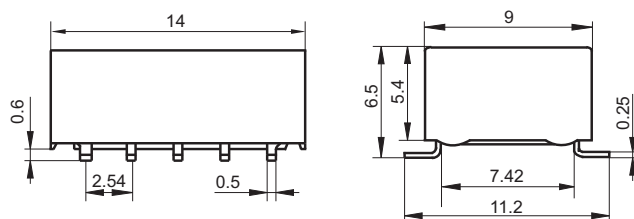
OUTLINE DIMENSIONS, WIRING DIAGRAM AND PC BOARD LAYOUT

Unit: mm

Outline Dimensions

PCB Layout (Bottom view)

DIP type


Standard
SMT type


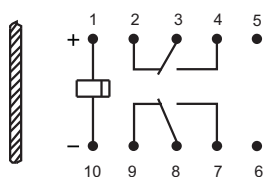
- Remark: 1) In case of no tolerance shown in outline dimension: outline dimension $\leq 1\text{mm}$, tolerance should be $\pm 0.2\text{mm}$; outline dimension $> 1\text{mm}$ and $\leq 5\text{mm}$, tolerance should be $\pm 0.3\text{mm}$; outline dimension $> 5\text{mm}$, tolerance should be $\pm 0.4\text{mm}$.
 2) The tolerance without indicating for PCB layout is always $\pm 0.1\text{mm}$.
 3) The width of the gridding is 2.54mm.

OUTLINE DIMENSIONS, WIRING DIAGRAM AND PC BOARD LAYOUT

Unit: mm

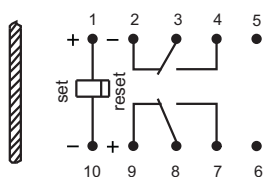
Wiring Diagram (Bottom view)

Single side stable



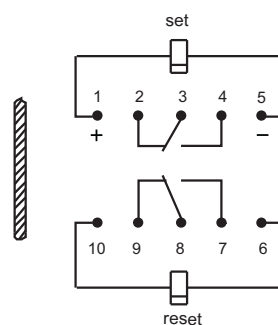
Deenergized condition

1 coil latching



Reset condition

2 coils latching

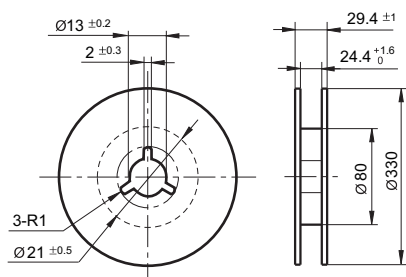


Reset condition

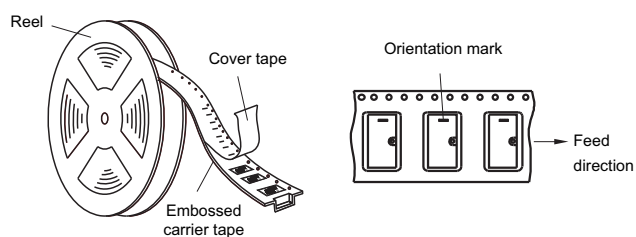
TAPE & REEL PACKING CONSTRUCTION AND DIMENSION

Unit: mm

Reel Dimensions

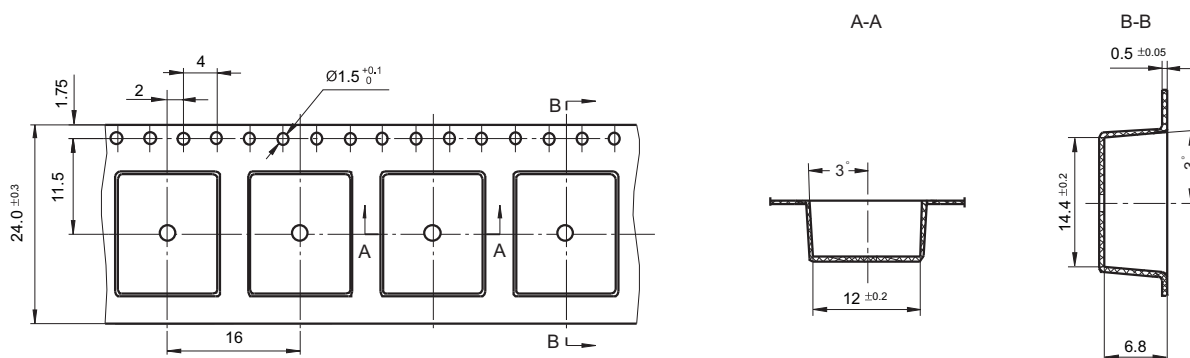


Direction of Relay Insertion



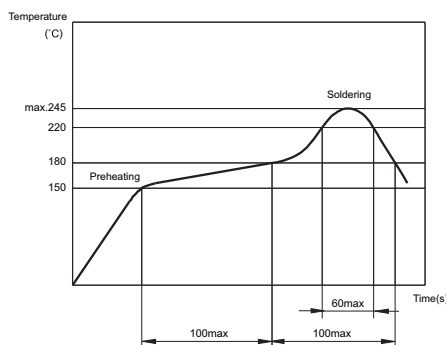
- Notes:** 1) Packing: 600pcs/reel, 4 reels/carton.
2) MOQ for reel packing is 600pcs.

Tape Dimensions



RECOMMENDED SOLDERING CONDITIONS

Temperature/Time profile of Reflow Soldering see below:



- Notes:**
- 1) Temperature profile shows Printed Circuit Board surface temperature on the relay terminal portion.
 - 2) Please check the actual soldering condition to use other method except above mentioned temperature profiles.

Notice

- 1) This relay is highly sensitive polarized relay, if correct polarity is not applied to the coil terminals, the relay does not operate properly.
- 2) To avoid using relays under strong magnetic field which will change the parameters of relays such as pick-up voltage and drop-out voltage.
- 3) Relay is on the "reset" status when being released from stock, with the consideration of shock risen from transit and relay mounting, it should be changed to the "set" status when application(connecting to the power supply). Please reset the relay to "set" or "reset" status on request.
- 4) In order to maintain the "set" or "reset" status, energized voltage to coil should reach the rated voltage, impulse width should be more than 5 times of "set" or "reset" time.
- 5) For 2 coil latching relay, do not energize voltage to "set" coil and "reset" coil simultaneously.
- 6) The relay may be damaged because of falling or when shocking conditions exceed the requirement.
- 7) Regarding the plastic sealed relay, we should leave it cooling naturally until below 40°C after welding, then clean it and deal with coating, remarkably the temperature of solvents should also be controlled below 40°C. Please avoid cleaning the relay by ultrasonic, avoid using the solvents like gasoline, Freon, and so on, which would affect the configuration of relay or influence the environment.
- 8) About preferable condition of operation, storage and transportation, please refer to "Explanation to terminology and guidelines of relay".

Disclaimer

This datasheet is for the customers' reference. All the specifications are subject to change without notice.

We could not evaluate all the performance and all the parameters for every possible application. Thus the user should be in a right position to choose the suitable product for their own application. If there is any query, please contact Hongfa for the technical service. However, it is the user's responsibility to determine which product should be used only.