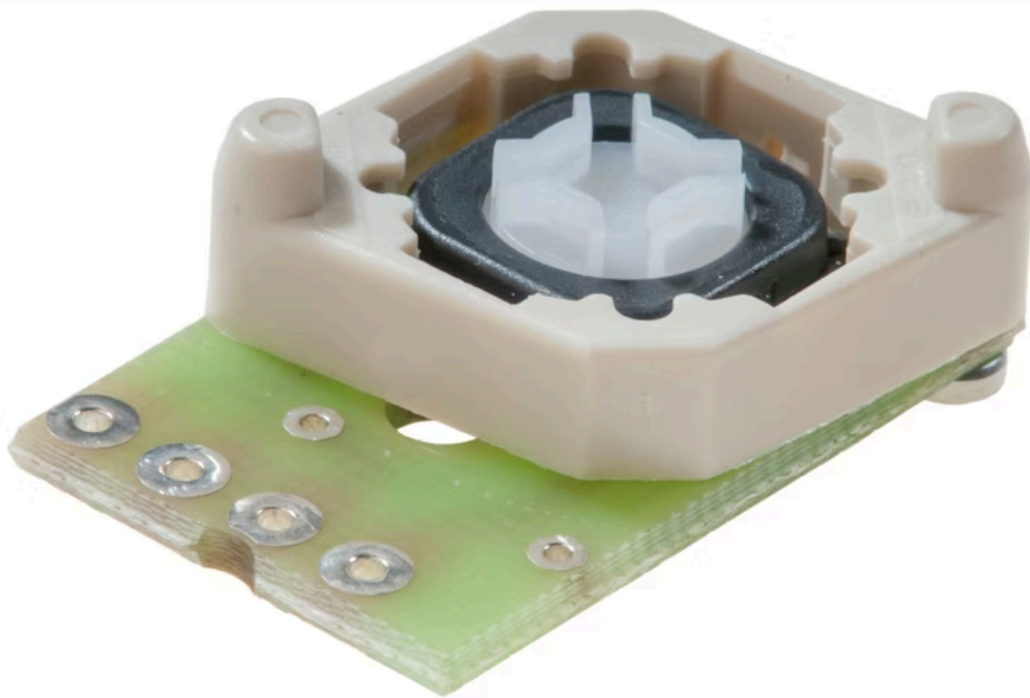


PCB

92-
981.0

分销方
Rs-online



<https://rs-online.eao.com/component/92-981.0/...>

您的产品:



92-981.0 PCB

机械特性

操作力: 2.7 N \pm 1 N (在开关元件上测量)

重量: 0.004 kg

证书

REACH: REACH compliant

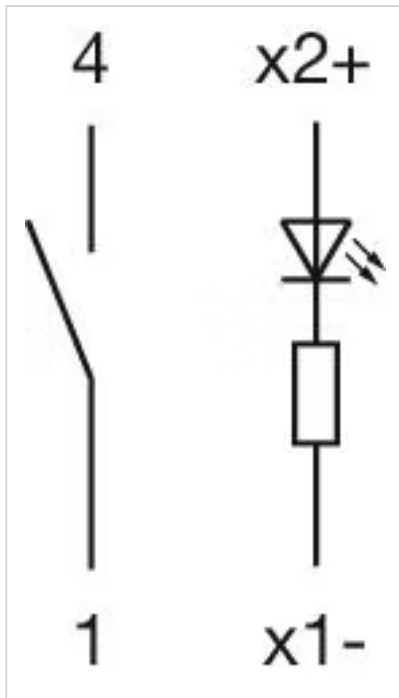
RoHS: RoHS compliant

其他

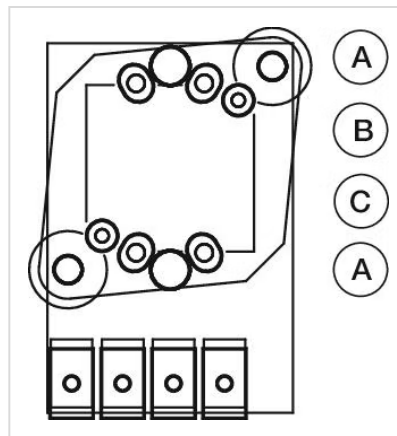
简述: PCB

材质: 金属/塑料

接线图:



组件布局:



A = 4 = 开关
 B = x+ = LED 阳极 (+)
 C = 1x- = LED 阴极 (-)