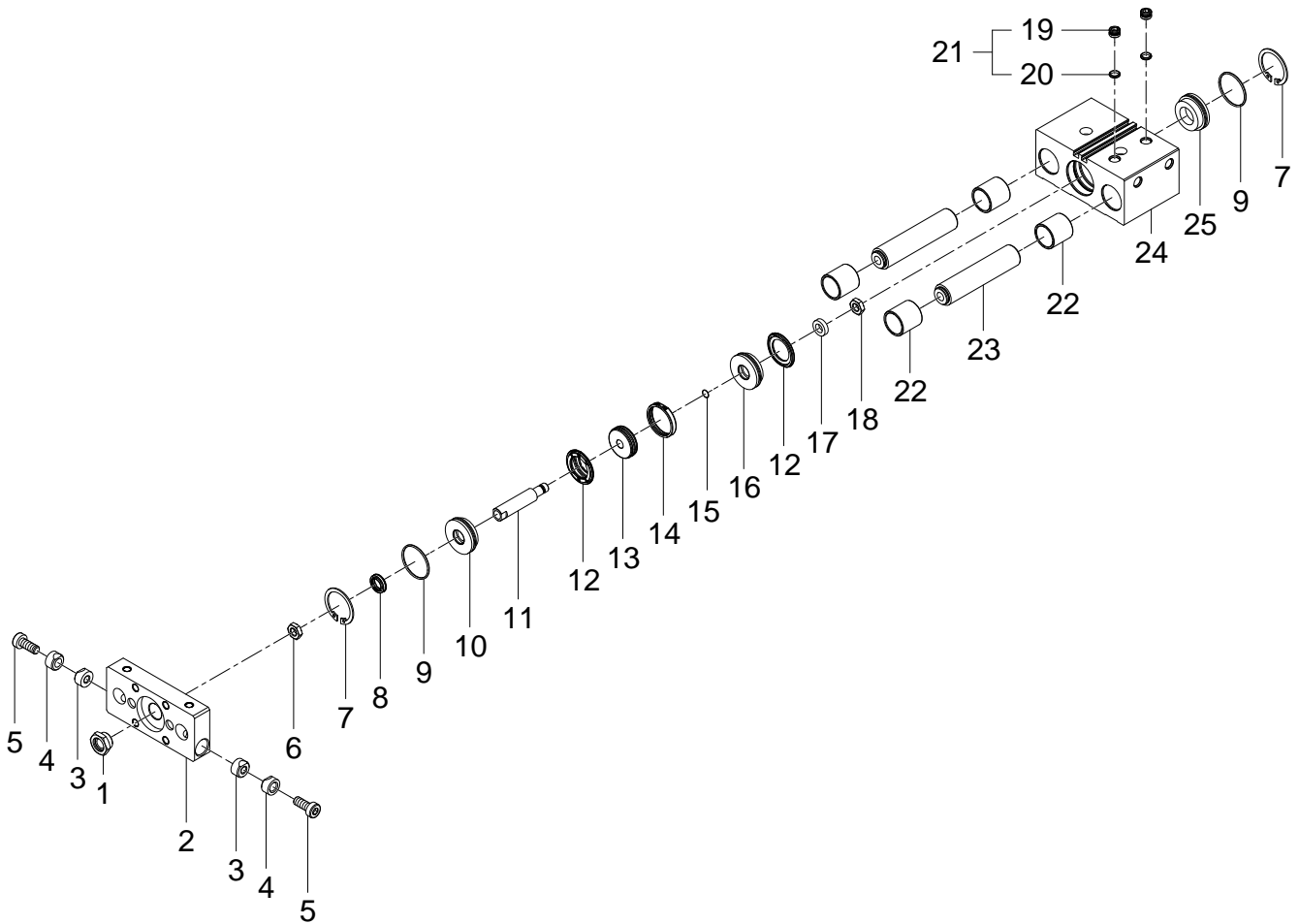


170885 DFM-80-25-P-A-GF Guided drive - Series till 02-2023



## 170885 DFM-80-25-P-A-GF Guided drive - Series till 02-2023

Pos.	Part no.	Type	Note	Qty.	Unit
A	394802	DFM- 80-PA Set of wearing parts	Spare parts: 8, 9, 12, 15, 20 <a href="#">Replacing the wearing parts</a>	1	PC
1		M16X1,5 Collar nut	Not available Use locking compound 8181256 CYBERBOND TM44 Tightening torque 110 Nm / 81.1 lbf ft	1	PC
2	671950	DFM-80 End plate	Position available until max. 06/15/2025!	1	PC
3	368292	M10 Clamping piece		2	PC
4	368291	M10 Clamping piece		2	PC
5	356653	DIN 6912-M10X25-8.8 Socket head screw	Use locking compound 8181256 CYBERBOND TM44 Tightening torque 40 Nm / 29.5 lbf ft	2	PC
6	381799	M16X1,5-1.0715 Hex nut	Position available until max. 06/15/2025! Use locking compound 8181256 CYBERBOND TM44 Tightening torque 110 Nm / 81.1 lbf ft	1	PC
7	236749	DIN 472-82X2,5 Retaining ring		2	PC
8		WIFC1-20X25X4,6-TPE-U Wiper seal	Not available separately, see position A Lubricate with 684474 LUB-KC1 during assembly	1	PC
9		B-78X2-N-NBR70 O-ring ISO3601	Not available separately, see position A Lubricate with 684474 LUB-KC1 during assembly	2	PC
10	713455	DFM-80 Bearing cap		1	PC
11	368280	ARA-20-S0039,5-S Piston rod	Position available until max. 06/15/2025!	1	PC
12		DFM-80 Piston seal	Not available separately, see position A Lubricate with 684474 LUB-KC1 during assembly	2	PC
13		AEVU- 80 Piston magnet	Not available	1	PC
14	338257	76,75X68X5,8 Ring magnet		1	PC
15		B-12X1,5-N-NBR70 O-ring ISO3601	Not available separately, see position A Lubricate with 684474 LUB-KC1 during assembly	1	PC
16		ADVU- 80 Piston	Not available	1	PC
17	338339	DIN 7349-13 Disc		1	PC
18	203968	DIN 439-B-M12X1,25-04 Hex nut	Use locking compound 8181256 CYBERBOND TM44 Tightening torque 45 Nm / 33.2 lbf ft	1	PC
19		G3/8A Plug screw	Not available separately, see position 21	2	PC
20		12,5X15,3X3,6 Sealing ring	Not available separately, see position 21+999 Lubricate with 684474 LUB-KC1 during assembly	2	PC
21	116517	G3/8 Plug screw		2	PC
22		DFM-80 Plain bearing	Not available	4	PC
23	368266	DFM- 80- 25-P-A-GF Guide rod	Position available until max. 06/15/2025!	2	PC
24		DFM-80-25 Housing	Not available Lubricate with 684474 LUB-KC1 during assembly	1	PC
25		DFM- 80- P-A End cap	Not available	1	PC