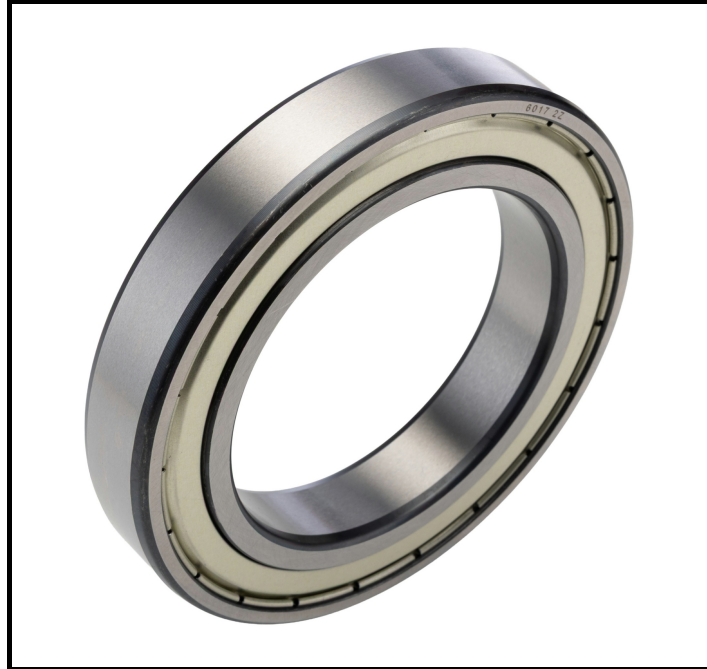


## FEATURES

- **Single Row Deep Groove Ball Bearing:** Provides smooth and efficient rotation for various applications
- **Steel Ball and Race Material:** Ensures durability and long service life
- **Cylindrical Bore Type:** Facilitates easy installation and alignment
- **Double Shielded End Type:** Protects against dust and debris, enhancing longevity
- **Dynamic Load Rating of 52 kN:** Supports high load capacities for demanding environments
- **Limiting Speed of 5300 rpm:** Suitable for high-speed applications
- **Sheet Metal Cage Material:** Offers stability and reduces friction
- **Internal Clearance CN:** Ensures optimal performance under standard conditions

## RS PRO 85mm Cylindrical Ball Bearing, Double Shielded

RS Stock No: 291-609



RS Professionally Approved Products bring to you professional quality parts across all product categories. Our product range has been tested by engineers and provides a comparable quality to the leading brands without paying a premium price.

## Product Description

This RS PRO ball bearing is designed for high-performance applications requiring reliable rotational movement. With a cylindrical bore and double-shielded end type, it ensures efficient operation and protection against contaminants, making it ideal for industrial machinery.

## General Specifications

Ball Material	Steel
Bearing Type	Single Row Deep Groove Ball
Bore Type	Cylindrical
Cage Material	Sheet Metal
Dynamic Load Rating	52 kN
End Type	Double Shielded
Internal Clearance	CN
Limiting Speed	5300 rpm
Number of Rows	1
Product Type	Ball Bearing
Race Material	Steel
Race Type	Plain
Race Width	22 mm
Static Load Rating	43 kN

## Mechanical Specifications

Inside Diameter	85 mm
Outside Diameter	130 mm

## Approvals

Standards/Approvals	ANSI-ESD S20.20:2021
---------------------	----------------------

