
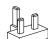
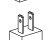
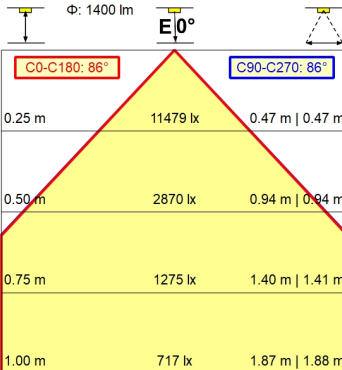
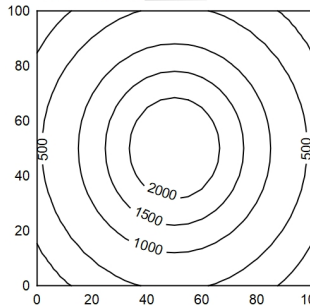
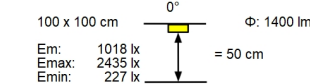
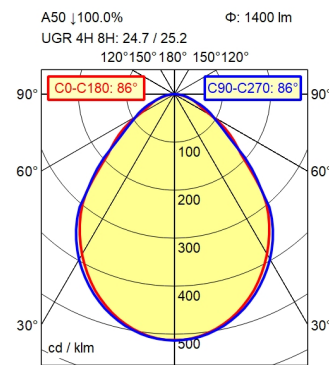


-  CEE 7/XVI
-  BS 1363 A
-  NEMA 1-15P



- Light source**
- Work equipment**
- Connected load**
- Secondary tension**
- Power consumption**
- Sec. power consumption**
- Luminous flux**
- Luminous efficiency** ¹⁾
- Light type/-color**
- Colour temperatur**
- Color rendering index**
- Light distribution**
- Beam angle**
- Chromaticity tolerance LED**
- Glare control**
- Luminance (L65)**
- UGR class (4H 8H; EN 12464-1)**
- System of protection/Class**
- Technology**
- Operation**
- Housing**
- Light source cover**
- Arm**
- Balance of articulation joints**
- Mains lead**
- Fastening**
- EAN**
- Weight without/incl. packaging**
- Packaging dimensions**

- LED
- Electronic plug-in ballast
- 100 - 240 V; AC; 50 Hz; 60 Hz
- 24 V
- ca. 18 W
- ca. 15 W
- approx. 1.400 lm
- approx. 93 lm/W
- Cold white
- approx. 5.000 K
- CRI ≥ 90; R9 ≥ 50
- Direct; Symmetric; approx. 100 %
- 86 °
- < 3 SDCM
- Diffusor
- ≤ 17.000 cd/m²
- ≤ 25
- IP 20; II with plug-in power supply, III without plug-in power supply
- Touch DIM
- Multi-function switch
- Untreated; Dusty grey
- Structured; Plastic
- Tubular aluminium section; Anodized; Aluminium coloured anodised
- Spring
- ca. 3,2 m; Mains plug; CEE 7/XVI; BS 1363 A; NEMA 1-15P
- Tap16; Table clamp (accessory); Wall bracket (accessory); Screw-down flange 4013330191825
- ca. 1,9 kg
- ca. 865 mm; 420 mm; 102 mm

¹⁾ For luminaires with separate control gear, the luminous efficacy refers to the luminaire head without control g

Arm-mounted luminaire ALD ALD 1300/950/D

113686000-00815671

