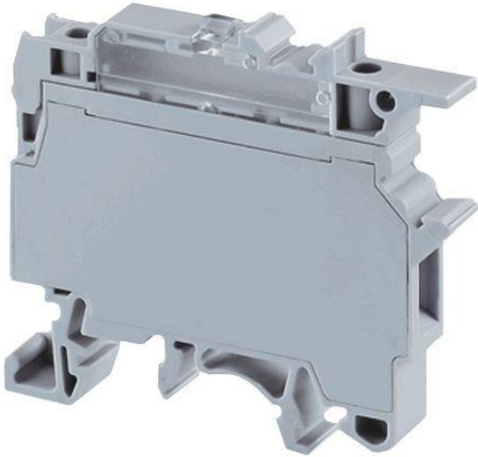


Professionally approved products.

Datasheet

Screwcap fused terminal for 5x25mm black

RS Stock 796-0924



Specifications

4 sq.mm Single Level Fuse Terminal Blocks

These Terminal Blocks are used in electrical and control systems which require fuse protection. The CF series accepts industry standard 5 x 20 mm and 5 x 25 mm glass cartridge fuses. These blocks are completely closed and do not need a separate end plate. Fuse blocks are supplied with a 6.3 A fast blow fuse (unless specified) .

Professionally approved products.

Datasheet

TECHNICAL DATA

Rated Voltage	1000 V
Rated Current	6.3 A
Tightening Torque	0.5 Nm
Housing Material	Polyamide
Comparative Tracking Index	1
Standard Colour	Grey
Type of Connection	Screw Clamp
Product Function	Single Level Fuse
Wire Entry Orientation	Side Entry
Mounting Possibility	DIN 32/DIN 35/DIN 35-15 Rail
Screw Size	M3
Operated by	Screwdriver
Rated Surge Voltage	5 KV
Pollution Degree	3

CONNECTION DATA

Conductor Cross Section Stranded min.	0.2 mm ²
Conductor Cross Section Stranded max.	4 mm ²
Conductor Cross Section AWG/Kcmil min	22 AWG
Conductor Cross Section AWG/Kcmil max	10 AWG
Conductor Cross Section Stranded with Ferrule/Lug min	0.2 mm ²
Conductor Cross Section Stranded with Ferrule/Lug max	4 mm ²
2 Conductors with same Cross Section Stranded min	0.2 mm ²
2 Conductor with same Cross Section Stranded max	2.5 mm ²
Conductor Cross Section Solid min	0.2 mm ²
Conductor Cross Section Solid max	6 mm ²
2 Conductors with same Cross Section Stranded with TWIN Ferrule/Lug min	0.2 mm ²
2 Conductor with same Cross Section Stranded with TWIN Ferrule/Lug max	2.5 mm ²
Stripping Length	9.5 mm
Internal Cylindrical Gauge	A4

