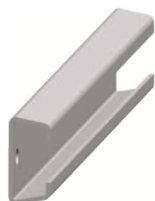


PRODUCT-DETAILS

RZTA610

RZTA610 Profile No.10 D6



General Information

Extended Product Type	RZTA610
Product ID	2CPX046047R9999
EAN	4011617460473
Catalog Description	RZTA610 Profile No.10 D6
Long Description	RZTA610 Profile No.10 D6

Technical

Product Name	RZTA610 Profile No.10 D6
Sub-Function 3	Cable guard rail
Enclosure Type	RZTA
Material	Metal
DIN Place Units	0
Meter Boards	0
Remarks	ETIM

Environmental

RoHS Status	No declaration needed
Environmental Information	2CPC100001X0201

Dimensions

Product Net Width	625 mm
Product Net Height	18 mm
Product Net Depth / Length	570 mm
Product Net Weight	0.661 kg

Container Information

Package Level 1 Units	1 piece
Package Level 1 Width	35.000 mm
Package Level 1 Height	570.000 mm
Package Level 1 Depth / Length	18.000 mm
Package Level 1 Gross Weight	0.687 kg
Package Level 1 EAN	4011617460473
Package Level 2 Units	12 piece
Package Level 2 Width	830 mm
Package Level 2 Height	1710 mm
Package Level 2 Depth / Length	1210 mm

Ordering

Minimum Order Quantity	1 piece
Customs Tariff Number	76169990
Country of Origin	Germany (DE)
Selling Unit of Measure	piece

Certificates and Declarations (Document Number)

Declaration of Conformity - CE	No declaration needed
Environmental Information	2CPC100001X0201
Instructions and Manuals	2CPC000186C0201
RoHS Information	1STE000024

Popular Downloads

Data Sheet, Technical Information	2CPC000001C0101;2CPC000001C0101;2CPC000186C0201;2CPC000186C0201
Instructions and Manuals	2CPC000186C0201

Classifications

ETIM 6	EC000322 - Cable guide for enclosures/cabinets
ETIM 7	EC000322 - Cable guide for enclosures/cabinets
ETIM 8	EC000322 - Cable guide for enclosures/cabinets
WEEE Category	5. Small Equipment (No External Dimension More Than 50 cm)
WEEE B2C / B2B	Business To Business
CN8	76169990
Object Classification	U

Code

Categories

Low Voltage Products and Systems → Enclosures → Accessories

Low Voltage Products and Systems → Enclosures → Main Distribution Boards (System pro E power) → Modular Boards - TriLine

Low Voltage Products and Systems → Enclosures → Main Distribution Boards (System pro E power) → R

