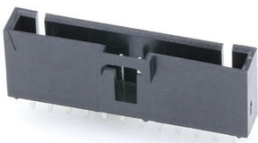




**Part Number :** [705430046](#)  
**Product Description :** 2.54mm Pitch SL Header,  
Single Row, Vertical, 3.05mm Pocket, Shrouded, 12  
Circuits, Tin (Sn) Plating  
**Series Number :** 70543  
**Status :** Active  
**Product Category :** PCB Headers and Receptacles  
**Engineering Number :** A-70543-0046



## Documents & Resources

### Drawings

[705430046 sd.pdf](#)  
[PK-70873-0014-001.pdf](#)

### 3D Models and Design Files


[STEP AP242](#)  
[SOLIDWORKS](#)  
[Creo](#)  
[Symbol and Footprint \(Multi-Format\)](#)

### Specifications

[PS-70400-001.pdf](#)  
[PS-70541-001.pdf](#)  
[TS-70541-100-001.pdf](#)

## Product Environment Compliance

### Compliance

GADSL/IMDS	Not Relevant
China RoHS	 per SJ/T 11365-2006
EU ELV	Not Relevant
Low-Halogen Status	Not Low-Halogen per IEC 61249-2-21
REACH SVHC	Not Contained per D(2025)4165-DC (25 June 2025)

EU RoHS	Compliant per EU 2015/863
---------	---------------------------

#### Compliance Statements

- EU RoHS
- REACH SVHC
- Low-Halogen

#### Industry Documents

- IPC 1752A Class C
- IPC 1752A Class D
- Molex Product Compliance Declaration
- IEC-62474
- chemSHERPA (xml)

#### Substances of Interest

- PFAS

#### EU RoHS Certificate of Compliance

#### Additional Product Compliance Information

## Part Details

### General

Status	Active
Category	PCB Headers and Receptacles
Series	70543
Description	2.54mm Pitch SL Header, Single Row, Vertical, 3.05mm Pocket, Shrouded, 12 Circuits, Tin (Sn) Plating
Application	Signal, Wire-to-Board
Component Type	PCB Header
Product Name	SL
UPC	800753597952

### Agency

CSA	LR19980
UL	E29179

### Electrical

Current - Maximum per Contact	3.0A
-------------------------------	------

Voltage - Maximum	250V
-------------------	------

## Physical

Breakaway	No
Circuits (Loaded)	12
Circuits (maximum)	12
Color - Resin	Black
Durability (mating cycles max)	25
First Mate / Last Break	No
Flammability	94V-0
Glow-Wire Capable	No
Guide to Mating Part	No
Keying to Mating Part	None
Lock to Mating Part	Yes
Material - Metal	Brass, Phosphor Bronze
Material - Plating Mating	Tin
Material - Plating Termination	Tin
Material - Resin	High Temperature Thermoplastic
Net Weight	2.314/g
Number of Rows	1
Orientation	Vertical
Packaging Type	Tube
PCB Locator	No
PCB Retention	None
PCB Thickness - Recommended	1.60mm
PC Tail Length	3.30mm
Pitch - Mating Interface	2.54mm
Pitch - Termination Interface	2.54mm
Plating min - Mating	3.810µm
Plating min - Termination	3.810µm
Polarized to Mating Part	Yes
Shrouded	Fully
Stackable	No
Temperature Range - Operating	-40° to +105°C
Termination Interface Style	Through Hole

**Solder Process Data**

Lead-Free Process Capability	WAVE
------------------------------	------

---

**Mates With / Use With**

**Mates with Part(s)**

Description	Part Number
SL Single Row Crimp Housings and CPA Retainers	<u>70066</u>
SL Single Row Female Insulation Displacement Connector Assemblies	<u>70400</u>
SL Single Row Female Receptacles	<u>70430</u>