



Connectors > PCB Connectors > PCB Headers & Receptacles



PCB Connector Type: **PCB Mount Receptacle**

PCB Mount Orientation: **Vertical**

Connector System: **Board-to-Board**

Number of Positions: **56**

Centerline (Pitch): **.8 mm [.031 in]**

Features

Product Type Features

PCB Connector Type	PCB Mount Receptacle
Connector System	Board-to-Board
Header Type	Fully Shrouded
Sealable	No
Connector & Contact Terminates To	Printed Circuit Board
Connector Product Type	Connector Assembly

Configuration Features

Connector Contact Load Condition	Fully Loaded
Board-to-Board Configuration	Parallel
Stackable	No
PCB Mount Orientation	Vertical
Number of Positions	56

Electrical Characteristics

Operating Voltage	125 VAC
Impedance	100 Ω
Insulation Resistance	2 MΩ
Dielectric Withstanding Voltage (Max)	675 VAC

Body Features

--



Primary Product Color	Black
-----------------------	-------

Contact Features

Contact Mating Area Plating Material Thickness	.76 µm[29.9212 µin]
Mating Tab Width	.38 mm[.015 in]
PCB Contact Termination Area Plating Material Thickness	.76 µm[29.9212 µin]
Contact Shape & Form	Single Beam
Contact Base Material	Phosphor Bronze
Mating Tab Thickness	.2 mm[.008 in]
PCB Contact Termination Area Plating Material	Gold
Contact Mating Area Plating Material	Gold (Au)
Contact Type	Socket
Contact Current Rating (Max)	1.25 A, 9.5 A

Termination Features

Rectangular Termination Post & Tail Width	1.77 mm[.07 in]
Rectangular Termination Post & Tail Thickness	.15 mm[.006 in]
Termination Method to PCB	Surface Mount

Mechanical Attachment

Mating Retention	With
PCB Mount Alignment Type	Locating Posts
PCB Mount Retention	With
PCB Mount Alignment	With
Connector Mounting Type	Board Mount
Mating Alignment	Without

Housing Features

Housing Material	LCP (Liquid Crystal Polymer)
Centerline (Pitch)	.8 mm[.031 in]

Dimensions

PCB Thickness (Recommended)	.06 mm[.8 in]
Connector Height	3.05 mm[.12 in]

Usage Conditions

Operating Temperature Range	-65 – 125 °C[-85 – 257 °F]
-----------------------------	----------------------------

Operation/Application



Assembly Process Feature	None
Circuit Application	Power & Signal

Industry Standards

UL Flammability Rating	UL 94V-0
------------------------	----------

Packaging Features

Packaging Quantity	22
Packaging Method	Box, Tray

Product Compliance

For compliance documentation, visit the product page on TE.com>

EU RoHS Directive 2011/65/EU	Compliant
EU ELV Directive 2000/53/EC	Compliant
China RoHS 2 Directive MIIT Order No 32, 2016	No Restricted Materials Above Threshold
EU REACH Regulation (EC) No. 1907/2006	Current ECHA Candidate List: JAN 2025 (247) Candidate List Declared Against: JAN 2025 (247) Does not contain REACH SVHC
Halogen Content	Low Halogen - Br, Cl, F, I < 900 ppm per homogenous material. Also BFR/CFR/PVC Free
Solder Process Capability	Reflow solder capable to 260°C

Product Compliance Disclaimer

This information is provided based on reasonable inquiry of our suppliers and represents our current actual knowledge based on the information they provided. This information is subject to change. The part numbers that TE has identified as EU RoHS compliant have a maximum concentration of 0.1% by weight in homogenous materials for lead, hexavalent chromium, mercury, PBB, PBDE, DBP, BBP, DEHP, DIBP, and 0.01% for cadmium, or qualify for an exemption to these limits as defined in the Annexes of Directive 2011/65/EU (RoHS2). Finished electrical and electronic equipment products will be CE marked as required by Directive 2011/65/EU. Components may not be CE marked. Additionally, the part numbers that TE has identified as EU ELV compliant have a maximum concentration of 0.1% by weight in homogenous materials for lead, hexavalent chromium, and mercury, and 0.01% for cadmium, or qualify for an exemption to these limits as defined in the Annexes of Directive 2000/53/EC (ELV). Regarding the REACH Regulation, the information TE provides on SVHC in articles for this part number is based on the latest European Chemicals Agency (ECHA) 'Guidance on requirements for substances in articles' posted at this URL: <https://echa.europa.eu/guidance-documents/guidance-on-reach>

Compatible Parts

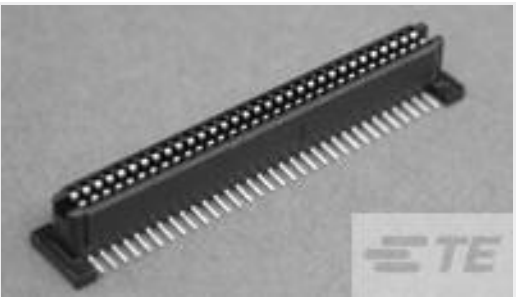


TE Part # 1-1658487-2  
[MSB0.80PL5ASY56DP,-,30,VCTY](#)

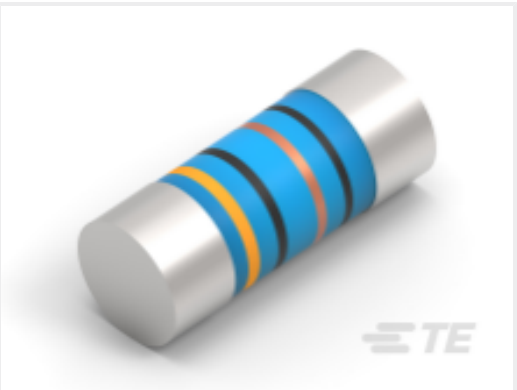
Customers Also Bought



TE Part #1-1825006-9  
[GDS10S04=DIP SW,SLIDE,SMT](#)



TE Part #5146893-2  
[1FHR,84,30A/S,S,C,S08,09,10](#)



TE Part #2176314-4  
[MELF SMA\\_A 180R 0.1% 15PPM 0102 0.3W](#)



TE Part #3-1415020-1  
[PT570N20](#)



TE Part #5-103911-3  
[60 SYSTEM 50 RCPT ASSY DRRA](#)



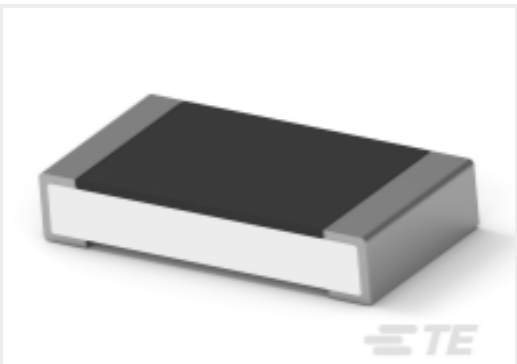
TE Part #5-104076-2  
[60 SYS50 HDR DRST SHRD W/SL SN](#)



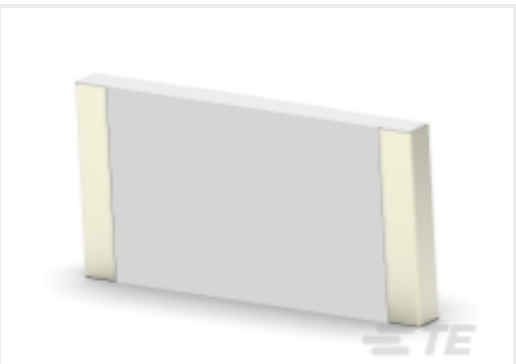
TE Part #1-928836-2  
[MOD2 PIN WITH A-PIN L/P](#)



TE Part #1-1437581-1  
[ASE22RL=AUTOSLIDE DP](#)



TE Part #4-2176391-7  
[RQ 1206 37K4 0.1% 10PPM 5K RL](#)



TE Part #7-2176246-6  
[CRGS2512 5% 1M8](#)

Documents

**Product Drawings**  
[MSB0.80RC-ASY56DP,-,30,VCTY](#)  
English

**CAD Files**  
[3D PDF](#)  
[3D](#)  
**Customer View Model**  
[ENG\\_CVM\\_CVM\\_1-1658486-2\\_M.2d\\_dxf.zip](#)



English

Customer View Model

[ENG\\_CVM\\_CVM\\_1-1658486-2\\_M.3d\\_igs.zip](#)

English

Customer View Model

[ENG\\_CVM\\_CVM\\_1-1658486-2\\_M.3d\\_stp.zip](#)

English

By downloading the CAD file I accept and agree to the [Terms and Conditions](#) of use.

Product Specifications

Application Specification

English