



# MICRO SWITCH

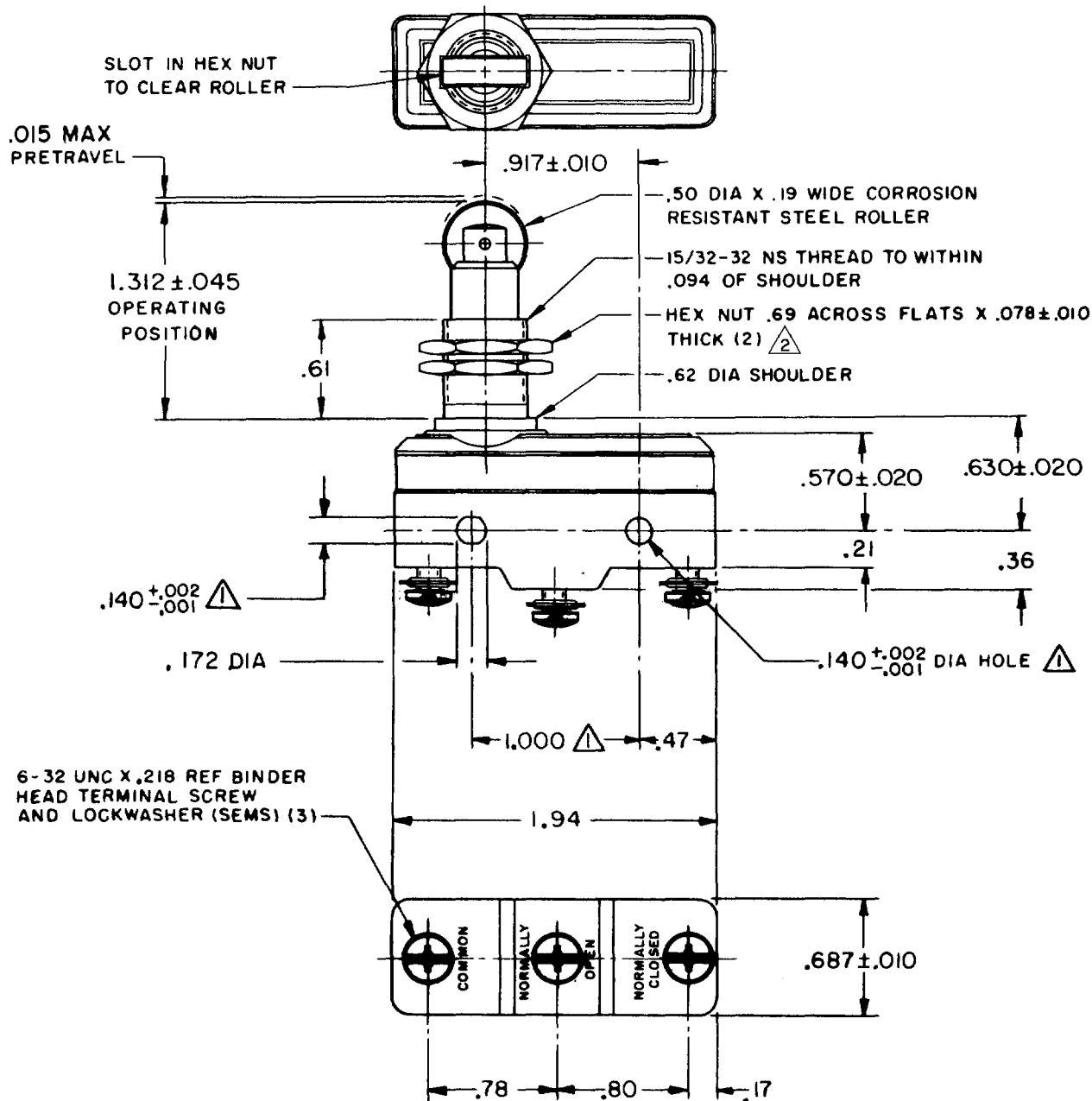
FREEPORT, ILLINOIS, U.S.A.  
A DIVISION OF HONEYWELL

FED. MFG. CODE 91929

# SWITCH - BASIC

CATALOG LISTING

## BZ - 2RQ18T



- NOTES
- <sup>1</sup> MOUNTING HOLES WILL ACCEPT PINS OR SCREWS OF .139 MAX DIA ON 1.000 ± .002 CENTERS
  - <sup>2</sup> HARDWARE FURNISHED UNASSEMBLED

THIS DRAWING COVERS A PROPRIETARY ITEM AND IS THE PROPERTY OF MICRO SWITCH, A DIVISION OF HONEYWELL. THIS DRAWING IS NOT TO BE COPIED OR USED WITHOUT THE APPROVAL OF MICRO SWITCH.

### CHARACTERISTICS

OPERATING FORCE ----- 9-13 OZ

RELEASE FORCE ----- 4 OZ MIN

DIFFERENTIAL TRAVEL ----- .0004 - .0020

OVERTRAVEL ----- .140 MIN

### ELECTRICAL DATA

CONTACT ARRANGEMENT  
S P D T

UNDERWRITERS' LAB. INC. LISTED RATING

-L96- 1/2 A-125, 250, OR 480 VAC  
1/2 A-125 VDC; 1/4 A-250 VDC  
1/8 HP-125 VAC, 1/4 HP-250 VAC

-L288-

-L299- 16A 250V ~ T85 5E4

-L306-

SCALE FULL

DO NOT SCALE PRINT

UNLESS OTHERWISE NOTED

DIMENSIONS ARE IN INCHES

TOLERANCES ARE:

ONE PLACE (.0) ±.030

TWO PLACE (.00) ±.015

THREE PLACE (.000) ±.005

ANGLES ±

WEIGHT .120 LB

M BZ-2RQ18T

PAGE 1 OF 1

DRAWING NUMBER

ISSUE 6

REPLACES

RELEASE NO.

CHECK

### REVISIONS

A	CO17410	6 C H	18 NOV 64
B	CO-189351-D	JWB	18 JUL 91
C	CO-77589	J A T	30 MAR 94
D	CO-82133	CSL	2 AUG 96
E	CO93346	D L T	11 SEP 98

CHECK

24 NOV 64

L S D

CHECK

16 NOV 64

FORMTEK

FO-30378

DRAWN