

## QMS1786 – Latte Panda – Assembly Instructions

Iss O

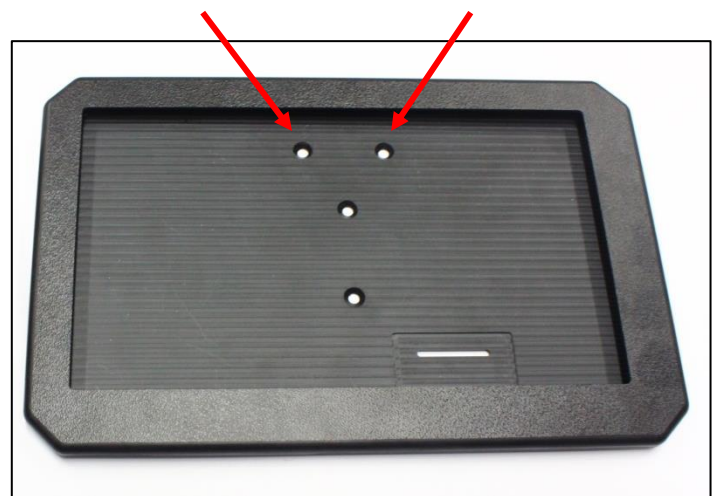
### List of Parts;

- Latte Panda Screen Case
- Latte Panda Stand
- Latte Panda PCB + Case
- Latte Panda Screen

### ASSEMBLING THE STAND



1. Place the stand onto the back like shown and then from the other side screw the stand into place.



Author	Lewis Letchford	First Issued 13/09/2017	Status	Released
Date Created	13/09/2017	Date Revised	Issue	O
Owner	Technical Support	Revised By	ECN Number	



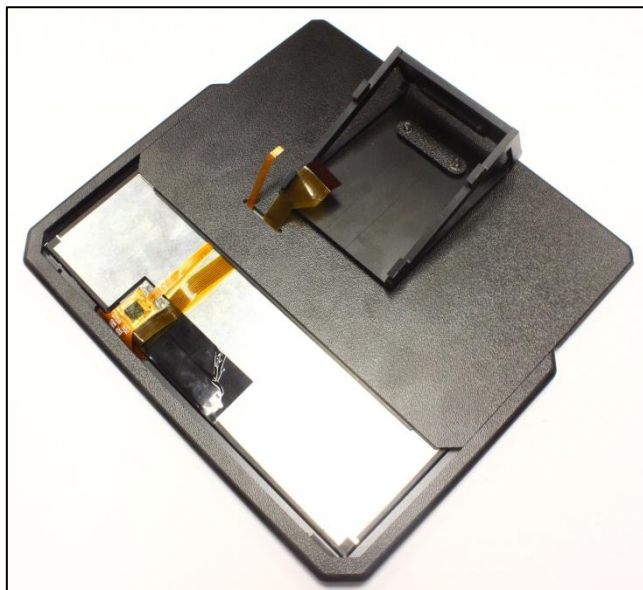
<b>Author</b>	<b>Lewis Letchford</b>	<b>First Issued 13/09/2017</b>	<b>Status</b>	<b>Released</b>
<b>Date Created</b>	<b>13/09/2017</b>	<b>Date Revised</b>	<b>Issue</b>	<b>0</b>
<b>Owner</b>	<b>Technical Support</b>	<b>Revised By</b>	<b>ECN Number</b>	

**ASSEMBLING THE SCREEN**

1. Start by removing the back panel by sliding it out from the base and then place the Latte panda screen with the ribbon cable at the top.



2. Insert the ribbon cable through the slot on the back panel and begin to slide the panel back on. – You will need to pull the cable through as you go.



Author	Lewis Letchford	First Issued 13/09/2017	Status	Released
Date Created	13/09/2017	Date Revised	Issue	0
Owner	Technical Support	Revised By	ECN Number	

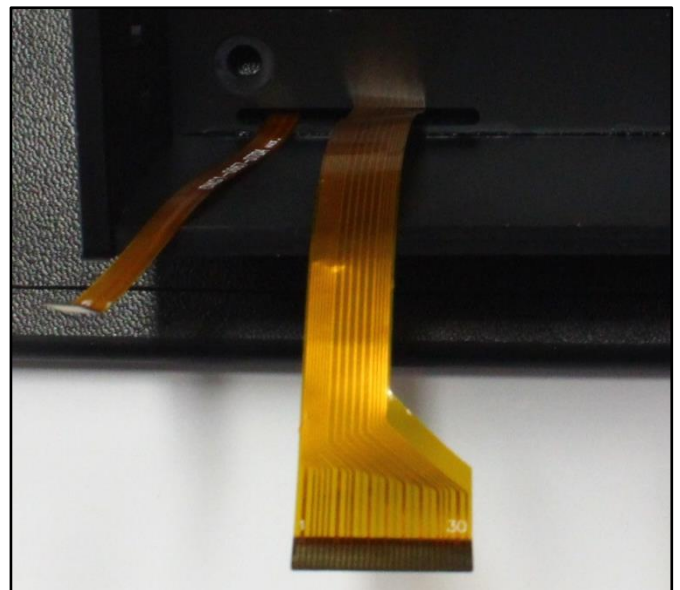
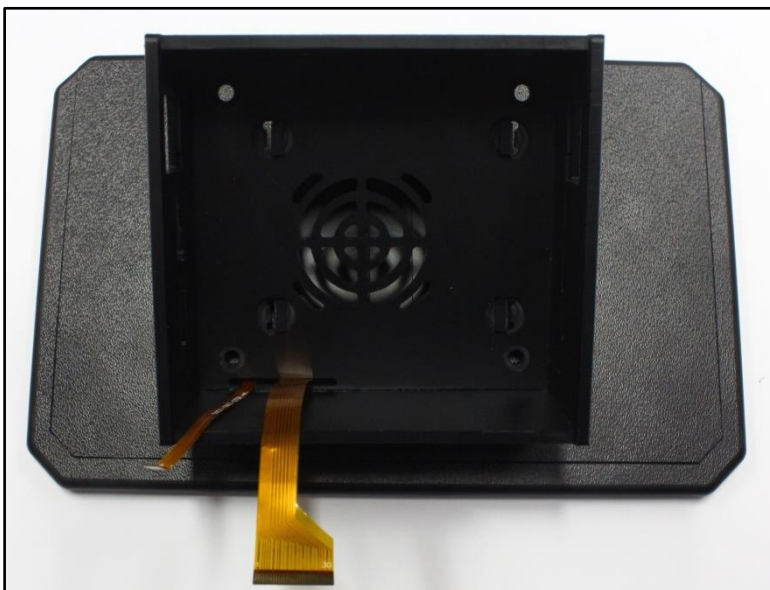


<b>Author</b>	<b>Lewis Letchford</b>	<b>First Issued 13/09/2017</b>	<b>Status</b>	<b>Released</b>
<b>Date Created</b>	<b>13/09/2017</b>	<b>Date Revised</b>	<b>Issue</b>	<b>0</b>
<b>Owner</b>	<b>Technical Support</b>	<b>Revised By</b>	<b>ECN Number</b>	

**ASSEMBLING THE PCB**

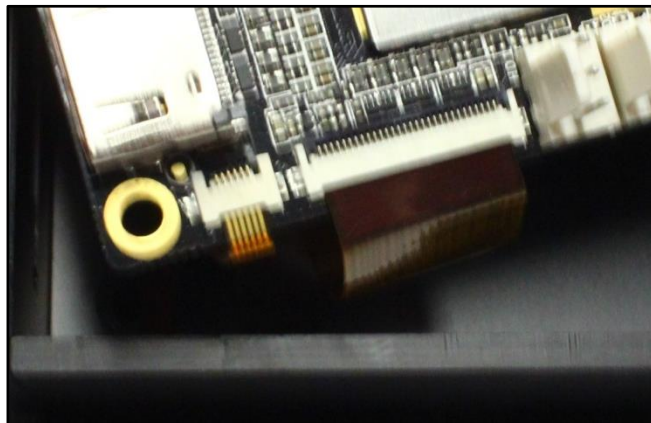
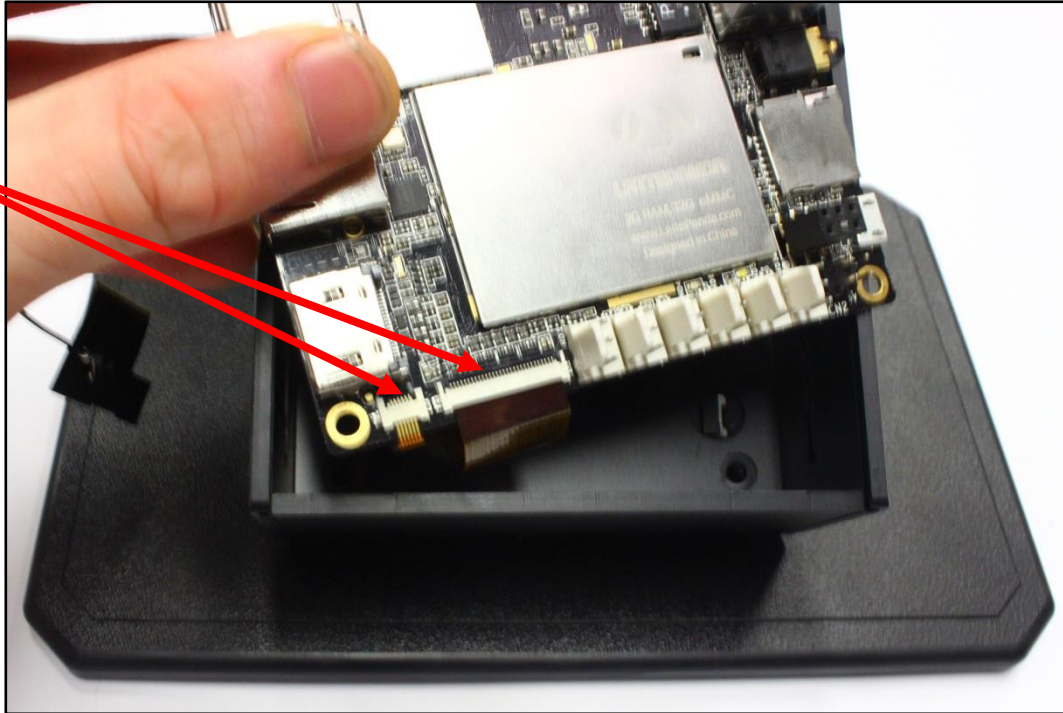


1. Start by inserting the ribbon cable on the back of the screen through the slot in the base of the PCB housing.



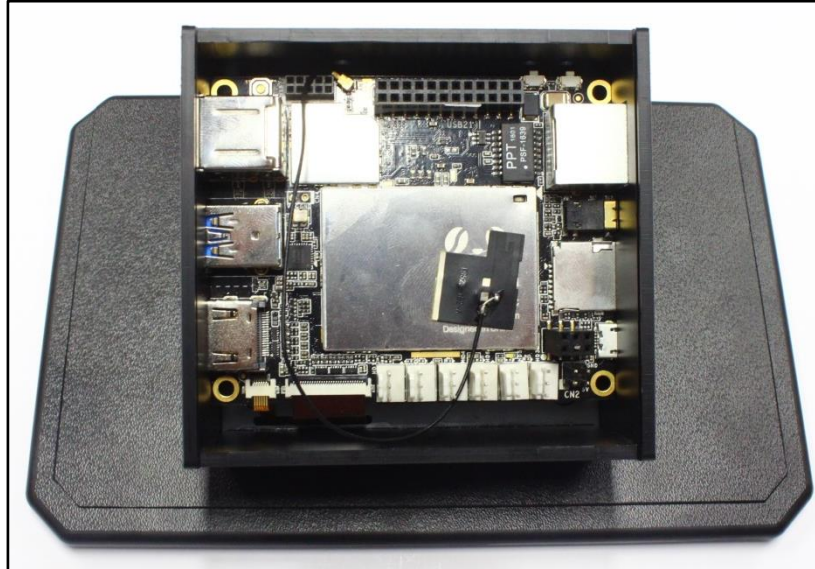
Author	Lewis Letchford	First Issued 13/09/2017	Status	Released
Date Created	13/09/2017	Date Revised	Issue	0
Owner	Technical Support	Revised By	ECN Number	

2. Next the ribbon cable needs to be attached to the two connectors shown below.



Author	Lewis Letchford	First Issued 13/09/2017	Status	Released
Date Created	13/09/2017	Date Revised	Issue	0
Owner	Technical Support	Revised By	ECN Number	

3. With the cable connected, place the PCB into the case – you may need to pull slightly on the sides to allow the PCB to fall into place.



4. Once the PCB is in place ensure that the components on the sides line up with their cut-outs and then slide the clear cover into place.



<b>Author</b>	<b>Lewis Letchford</b>	<b>First Issued 13/09/2017</b>	<b>Status</b>	<b>Released</b>
<b>Date Created</b>	<b>13/09/2017</b>	<b>Date Revised</b>	<b>Issue</b>	<b>0</b>
<b>Owner</b>	<b>Technical Support</b>	<b>Revised By</b>	<b>ECN Number</b>	



<b>Author</b>	<b>Lewis Letchford</b>	<b>First Issued 13/09/2017</b>	<b>Status</b>	<b>Released</b>
<b>Date Created</b>	<b>13/09/2017</b>	<b>Date Revised</b>	<b>Issue</b>	<b>0</b>
<b>Owner</b>	<b>Technical Support</b>	<b>Revised By</b>	<b>ECN Number</b>	