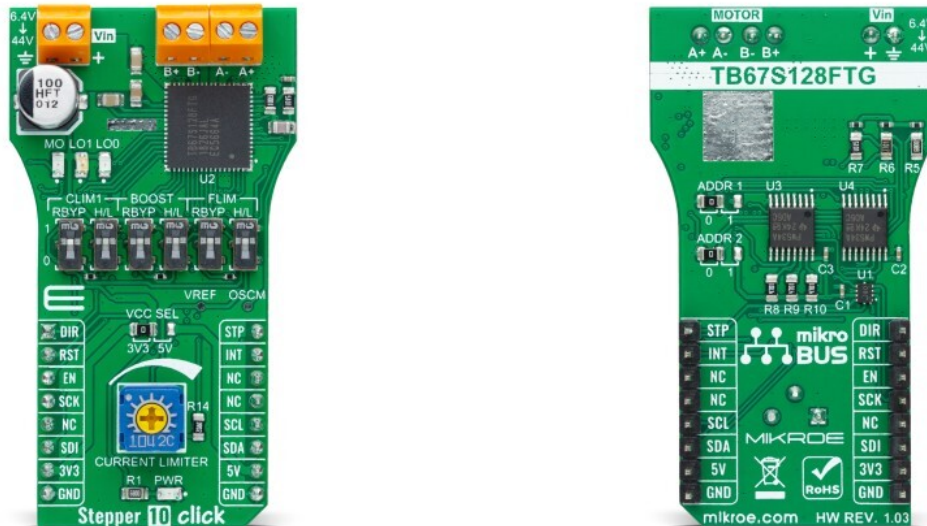


## Stepper 10 Click



PID: MIKROE-4138

**Stepper 10 Click** is a compact add-on board that controls one stepper motor with a PWM constant current drive. This board features the TB67S128FTG, a two-phase bipolar stepping motor driver from Toshiba Semiconductor. It is fabricated using a BiCD process with an output rating of 50V/5A and a built-in decoder that can supply the motor with a voltage of up to 44V. Toshiba's innovative technology process results in low power consumption with low on-resistance (0.25Ω) on the integrated MOSFET output stage. The stepper motor can be driven in both directions from full step to 1/128 micro-steps. The motor driver possesses features like a high-efficiency motor control mechanism, advanced current detection system, active gain control, and multi-error detection functions. This Click board™ is a perfect solution for building various applications that require advanced stepper motor control with maximum precision and reliability.

Stepper 10 Click board™ is supported by a mikroSDK compliant library, which includes functions that simplify software development. This Click board™ comes as a fully tested product, ready to be used on a system equipped with the mikroBUS™ socket.

### How does it work?

Stepper 10 Click is based on the TB67S128FTG, a two-phase bipolar stepper motor driver from Toshiba Semiconductor, which features adjustable current limiting and micro-stepping down to 1/128 step operation. Fabricated using a leading-edge BiCD process with low power consumption and low output on-resistance, Toshiba's TB67S128FTG in a thermally enhanced small package helps improve efficiency and reduce the size of motor applications. This stepping motor driver incorporates a high-speed, high-precision control technology required for factory automation systems and office equipment and helps reduce the number of external

Mikroe produces entire development toolchains for all major microcontroller architectures.

Committed to excellency, we are dedicated to helping engineers bring the project development up to speed and achieve outstanding results.

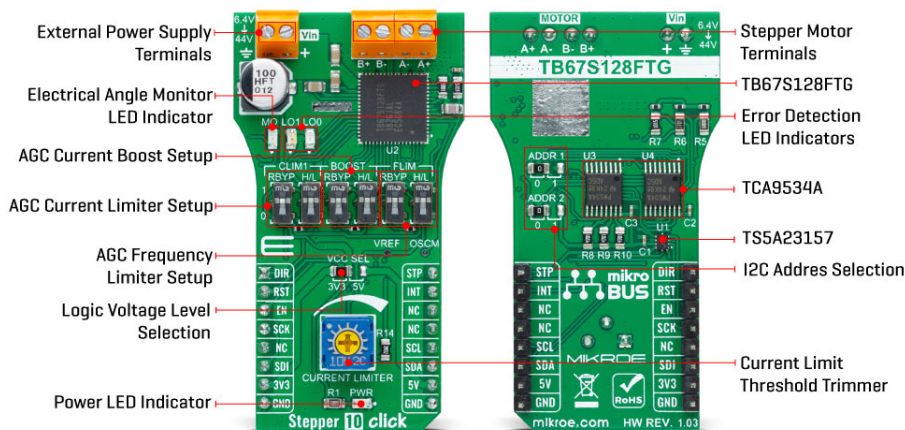


ISO 27001: 2013 certification of informational security management system.  
 ISO 14001: 2015 certification of environmental management system.  
 OHSAS 18001: 2008 certification of occupational health and safety management system.



ISO 9001: 2015 certification of quality management system (QMS).

parts required, simplifying system design. The chip itself can dynamically select an optimal decay mode by monitoring the actual motor current and automatically reducing the driving current below the full amount when the motor is lightly loaded to minimize power consumption and heat generation. The driver has a wide operating voltage range of 6.4V to 44 V and can continuously deliver approximately 2.1 A per phase without a heat sink or forced air flow (up to 5 A peak). It features built-in protection against under-voltage, over-current, and over-temperature conditions.



There are two interface modes to select from: CLK mode for simple step and direction control and serial mode for controlling and setting the driver through a serial interface. Step resolution is configurable using MODE2, MODE1, and MODE0 by setting the appropriate pin level. Most pins are controlled using an IO expander via the I2C bus except DIR, STEP, ENABLE, and RESET, which are routed to mikroBUS™. Stepper 10 click has eight different step modes: full-step, half-step, 1/4-step, 1/8, 1/16, 1/32, 1/64, and 1/128. Besides that, four different decay modes are available using the MDT0 and MDT1 pins. The on-board trimmer potentiometer can be used to set the current limit to prevent damage to the motor.

Toshiba's unique AGC feature stepping motor technology automatically optimizes the drive current in real-time according to the load torque. It helps reduce unnecessary current, drastically cut power consumption and heat generation. AGC is configured with six pins (AGC, CLIM0, CLIM1, FLIM, BOOST, and LTH). CLIM1, FLIM, and BOOST (BST) are four-state logic inputs that can be tied high to VCC, pulled high through a 100kΩ resistor, pulled low through a 100kΩ resistor, or tied low to GND. This is done by using the on-board switches, one for logic level and one to bypass the 100kΩ resistor by choice.

Stepper 10 Click has the function to detect several error states indicated by two LEDs: LO1 and LO0. If the overcurrent is detected, the LO0 will toggle, while the LO1 represents the motor load open indication. If both LEDs are toggled, then the thermal shutdown is detected. The errors are cleared by toggling standby mode or performing a power cycle to the driver. The LED designated as MO is toggled if the driver's electrical angle is equal to the initial value of 45°, which occurs immediately after reset or whenever the driver has stepped a full cycle.

Stepper 10 Click uses the two TCA9534APWR Low-Power IO Expanders that support the I2C interface protocol. To avoid conflicts on the bus, the slave addresses can be reconfigured by SMD jumpers labeled ADDR1 and ADDR2.

This Click board™ can operate with either 3.3V or 5V logic voltage levels selected via the VCC

Mikroe produces entire development toolchains for all major microcontroller architectures.

Committed to excellency, we are dedicated to helping engineers bring the project development up to speed and achieve outstanding results.



ISO 27001: 2013 certification of informational security management system.  
 ISO 14001: 2015 certification of environmental management system.  
 OHSAS 18001: 2008 certification of occupational health and safety management system.



ISO 9001: 2015 certification of quality management system (QMS).


SEL jumper. This way, both 3.3V and 5V capable MCUs can use the communication lines properly. Also, this Click board™ comes equipped with a library containing easy-to-use functions and an example code that can be used as a reference for further development.

## Specifications

Type	Stepper
Applications	Ideal for building various applications that require advanced stepper motor control, with maximum precision and reliability.
On-board modules	TB67S128FTG - two-phase bipolar stepper motor driver using a PWM chopper from Toshiba Semiconductor
Key Features	Full, half, quarter, 1/8, 1/16, 1/32, 1/64, 1/128 step operation, low on-resistance. MOSFET output stage, high-efficiency motor current control mechanism, built-in anti-stall architecture, built-in sense resistor less current control architecture, high voltage and current, multi error detect functions, and more
Interface	GPIO,I2C,SPI
Feature	No ClickID
Compatibility	mikroBUS™
Click board size	L (57.15 x 25.4 mm)
Input Voltage	3.3V or 5V,External

## Pinout diagram

This table shows how the pinout on Stepper 10 Click corresponds to the pinout on the mikroBUS™ socket (the latter shown in the two middle columns).

Notes	Pin					Pin	Notes
Direction Control	<b>DIR</b>	1	AN	PWM	16	<b>STP</b>	Step Clock Input
Reset	<b>RST</b>	2	RST	INT	15	<b>INT</b>	Interrupt
Motor Drive Enable	<b>EN</b>	3	CS	RX	14	NC	
SPI Clock	<b>SCK</b>	4	SCK	TX	13	NC	
	NC	5	MISO	SCL	12	<b>SCL</b>	I2C Clock
SPI Data IN	<b>SDI</b>	6	MOSI	SDA	11	<b>SDA</b>	I2C Data
Power Supply	<b>3.3V</b>	7	3.3V	5V	10	<b>5V</b>	Power supply
Ground	<b>GND</b>	8	GND	GND	9	<b>GND</b>	Ground

## Onboard settings and indicators

Label	Name	Default	Description
LD1	PWR	-	Power LED Indicator
LD2	MO	-	Electrical angle LED

Mikroe produces entire development toolchains for all major microcontroller architectures.

Committed to excellency, we are dedicated to helping engineers bring the project development up to speed and achieve outstanding results.



ISO 27001: 2013 certification of informational security management system.  
 ISO 14001: 2015 certification of environmental management system.  
 OHSAS 18001: 2008 certification of occupational health and safety management system.



ISO 9001: 2015 certification of quality management system (QMS).

			Indicator
LD3-LD4	LO1-LO0	-	Error detection LED Indicators
JP1-JP2	ADDR SEL	Left	I2C Address Selection 0/1: Left position 0, Right position 1
JP3	VCC SEL	Left	Logic Voltage Level Selection 3V3/5V: Left position 3V3, Right position 5V
VR1	Current Limiter	-	Current Limit Threshold Trimmer
SW1-SW3	R_BYPASS	Up	Switch bypassing 100kΩ resistor: Up - short, Down - open
SW4	CLIM1	Up	Bottom Current Limit CLIM1 Logic Level Selection: Up - VCC, Down - GND
SW5	BOOST	Up	Current BOOST Logic Level Selection: Up - VCC, Down - GND
SW6	FLIM	Up	Frequency Limit FLIM Logic Level Selection: Up - VCC, Down - GND

## Stepper 10 Click electrical specifications

Description	Min	Typ	Max	Unit
Supply Voltage	3.3	-	5	V
External Power Supply	6.4	-	44	V
Output Current	-	-	5	A

Note 1: Usually, the maximum current value at the time should use 70% or less of the absolute maximum ratings for a standard on thermal rating. The maximum output current may be further limited given thermal considerations, depending on ambient temperature and board conditions.

## Software Support

We provide a library for the Stepper 10 Click as well as a demo application (example), developed using MIKROE [compilers](#). The demo can run on all the main MIKROE [development boards](#).

Package can be downloaded/installed directly from NECTO Studio Package Manager (recommended), downloaded from our [LibStock™](#) or found on [MIKROE github account](#).

## Library Description

This library contains API for Stepper 10 Click driver.

## Key functions

Mikroe produces entire development toolchains for all major microcontroller architectures.

Committed to excellency, we are dedicated to helping engineers bring the project development up to speed and achieve outstanding results.



ISO 27001: 2013 certification of informational security management system.  
 ISO 14001: 2015 certification of environmental management system.  
 OHSAS 18001: 2008 certification of occupational health and safety management system.



ISO 9001: 2015 certification of quality management system (QMS).

- `stepper10_set_direction` This function sets the motor direction by setting the DIR pin logic state.
- `stepper10_set_step_mode` This function sets the step mode resolution settings.
- `stepper10_drive_motor` This function drives the motor for the specific number of steps at the selected speed.

## Example Description

This example demonstrates the use of the Stepper 10 Click by driving the motor in both directions for a desired number of steps.

The full application code, and ready to use projects can be installed directly from NECTO Studio Package Manager (recommended), downloaded from our [LibStock™](#) or found on [MIKROE github account](#).

Other MIKROE Libraries used in the example:

- MikroSDK.Board
- MikroSDK.Log
- Click.Stepper10

## Additional notes and informations

Depending on the development board you are using, you may need [USB UART click](#), [USB UART 2 Click](#) or [RS232 Click](#) to connect to your PC, for development systems with no UART to USB interface available on the board. UART terminal is available in all MIKROE [compilers](#).

## mikroSDK

This Click board™ is supported with [mikroSDK](#) - MIKROE Software Development Kit. To ensure proper operation of mikroSDK compliant Click board™ demo applications, mikroSDK should be downloaded from the [LibStock](#) and installed for the compiler you are using.

For more information about mikroSDK, visit the [official page](#).

## Resources

[mikroBUS™](#)

[mikroSDK](#)

[Click board™ Catalog](#)

[Click Boards™](#)

## Downloads

[TB67S128FTG datasheet](#)

[TS5A23157 datasheet](#)

Mikroe produces entire development toolchains for all major microcontroller architectures.

Committed to excellency, we are dedicated to helping engineers bring the project development up to speed and achieve outstanding results.



ISO 27001: 2013 certification of informational security management system.  
ISO 14001: 2015 certification of environmental management system.  
OHSAS 18001: 2008 certification of occupational health and safety management system.



ISO 9001: 2015 certification of quality management system (QMS).

[Stepper 10 click 2D and 3D files v102](#)

[Stepper 10 click example on Libstock](#)

[Stepper 10 click schematic v102](#)

[Stepper 10 click 2D and 3D files v103](#)

[Stepper 10 click Schematic v103](#)

Mikroe produces entire development toolchains for all major microcontroller architectures.

Committed to excellency, we are dedicated to helping engineers bring the project development up to speed and achieve outstanding results.



ISO 27001: 2013 certification of informational security management system.  
ISO 14001: 2015 certification of environmental management system.  
OHSAS 18001: 2008 certification of occupational health and safety management system.



ISO 9001: 2015 certification of quality management system (QMS).