

Pedestals and Pedestal Accessories

Bulletin
PI

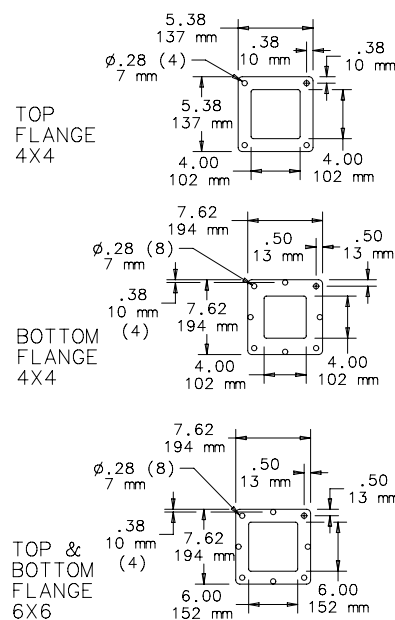
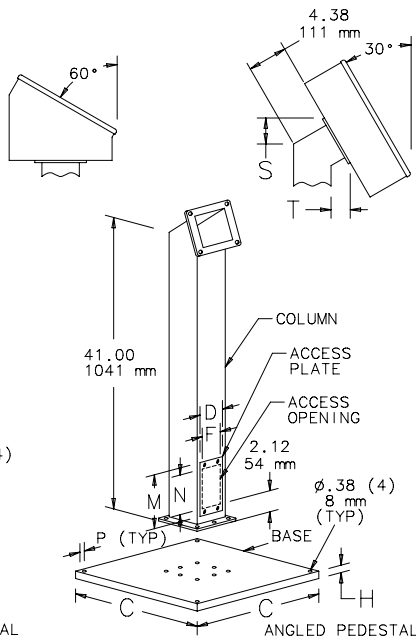
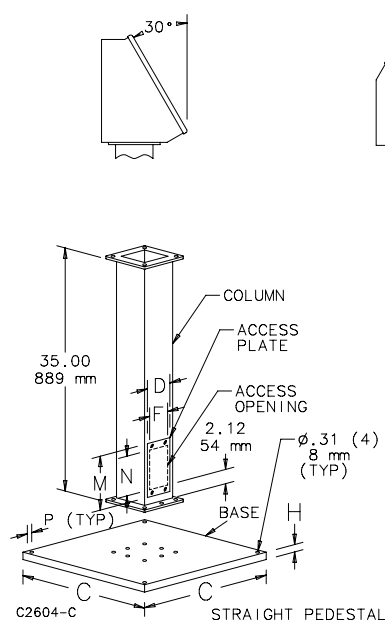
Pedestals



Pedestals enable many types of enclosures and boxes to be floor mounted. Four columns and two bases are available. Columns can be mounted on either base. Wiring connections can be made through the base, through the vertical column, or directly to the enclosure. A cutout must be made in the enclosure if the wires are to come through the column.

Columns have flanges at each end and a gasketed access plate. Screws, oil-resistant gaskets, and box connector fitting are furnished with each column for joining an enclosure to the top of the column. Columns are 14 gauge steel with 10 gauge flanges. 18.00 x 18.00 (457mm x 457mm) base is .19-inch (5mm) steel and 24.00 x 24.00 (610mm x 610mm) base is .25-inch (6mm) steel. Both bases have leveling screws and holes for bolting to the floor. Finish on bases and columns is ANSI 61 gray polyester powder coating over phosphatized surfaces. Bases and columns must be ordered separately. The user would normally remove the mounting brackets from the enclosure if the enclosure is mounted on a pedestal. Hoffman can supply enclosures without mounting brackets and with cutouts. Consult factory for more information.

Catalog Number	A x B in. (mm)	Description	C (in.)	C (mm)	D (in.)	D (mm)	F (in.)	F (mm)	H (in.)	H (mm)	M (in.)	M (mm)	N (in.)	N (mm)	P (in.)	P (mm)	S (in.)	S (mm)	T (in.)	T (mm)
A44CCOL	4.00 x 4.00 (102 x 102)	Straight Pedestal Column	—	—	3.75	95	2.75	70	—	—	7.25	184	6	152	—	—	—	—	—	—
A44PBCOL	4.00 x 4.00 (102 x 102)	Angled Pedestal Column	—	—	3.75	95	2.75	70	—	—	7.25	184	6	152	—	—	2.75	70	2.06	52
A66CCOL	6.00 x 6.00 (152 x 152)	Straight Pedestal Column	—	—	5.75	146	4.75	121	—	—	8	203	6.75	171	—	—	—	—	—	—
A66PBCOL	6.00 x 6.00 (152 x 152)	Angled Pedestal Column	—	—	5.75	146	4.75	121	—	—	8	203	6.75	171	—	—	2.88	73	1.12	28
A18SBASE	18.00 x 18.00 (457 x 457)	Pedestal Base	18	457	—	—	—	—	1	25	—	—	—	—	0.62	16	—	—	—	—
A24SBASE	24.00 x 24.00 (610 x 610)	Pedestal Base	24	610	—	—	—	—	1.12	28	—	—	—	—	0.69	17	—	—	—	—



Pedestals and Pedestal Accessories

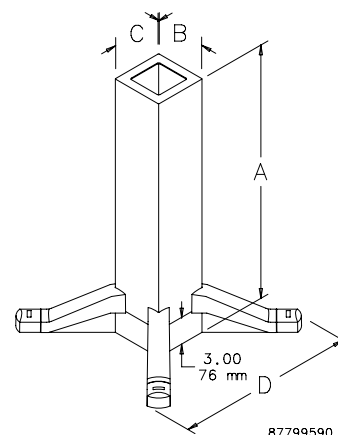
Bulletin
PI, PIS

Pedestal with Legs



Pedestal is available in two heights. Vertical tube has rigid one-piece construction. Bottom of tube is open. Four sturdy die-cast legs bolt to vertical tube. Legs have holes for bolting pedestal to the floor. Legs will accept casters in limited applications. Heavy duty black polymer caps fit on ends of legs to cover bolts or levelers. Pedestal has ANSI 61 medium gray or RAL 7035 textured light gray polyester powder paint finish. Tapped mounting holes in the top of pedestal allow attachment to operator interface base with cutout, swivel, swivel tilt, or angle adapter. Hardware and gasket to attach enclosure are included.

Catalog Number ANSI 61	Catalog Number RAL 7035	A x B x C in. (mm)	D (in.)	D (mm)
AP26L44	AP26L44LG	26.0 x 4.0 x 4.0 (660 x 102 x 102)	23.62	600
AP36L44	AP36L44LG	36.0 x 4.0 x 4.0 (914 x 102 x 102)	23.62	600
AP26L88	AP26L88LG	26.0 x 8.0 x 8.0 (660 x 203 x 203)	27.62	702
AP36L88	AP36L88LG	36.0 x 8.0 x 8.0 (914 x 203 x 203)	27.62	702



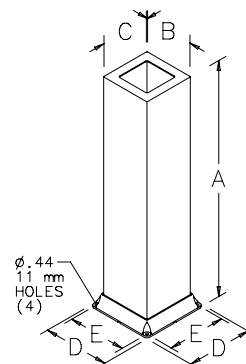
87799590

Bolt-Down Pedestal



Bolt-down pedestal is available in two heights. The vertical tube has rigid one-piece construction. Rigid cast aluminum base flanges bolt to the vertical tube. Pedestal has ANSI 61 medium gray or RAL 7035 textured light gray polyester powder paint finish. Tapped mounting holes in the top of pedestal allow attachment to operator interface base with cutout, swivel, swivel tilt, or angle adapter. Hardware and gasket to attach enclosure are included.

Catalog Number ANSI 61	Catalog Number RAL 7035	A x B x C in. (mm)	D (in.)	D (mm)	E (in.)	E (mm)
AP23B44	AP23B44LG	23.0 x 4.0 x 4.0 (584 x 102 x 102)	6.25	159	5.25	133
AP33B44	AP33B44LG	33.0 x 4.0 x 4.0 (838 x 102 x 102)	6.25	159	5.25	133
AP23B88	AP23B88LG	23.0 x 8.0 x 8.0 (584 x 203 x 203)	10.25	260	9.25	235
AP33B88	AP33B88LG	33.0 x 8.0 x 8.0 (838 x 203 x 203)	10.25	260	9.25	235

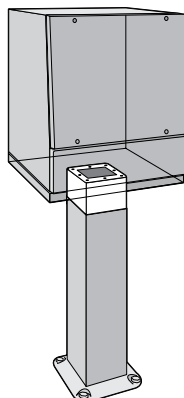


87799591

Pedestals and Pedestal Accessories

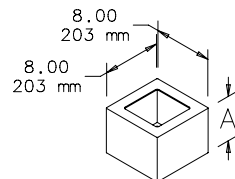
Bulletin
PI, PIS

Extension

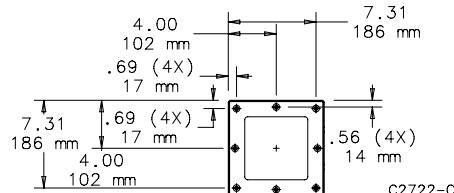


Pedestal extension can be used with pedestals to provide additional 6 inches (152mm) of height for standing position. ANSI 61 medium gray polyester powder paint or RAL7035 textured light gray polyester powder paint.

Catalog Number ANSI 61	Catalog Number RAL 7035	A (in.)	A (mm)
APE688	APE688LG	6.0	152



C2796-C



C2722-C

HOLE PATTERN

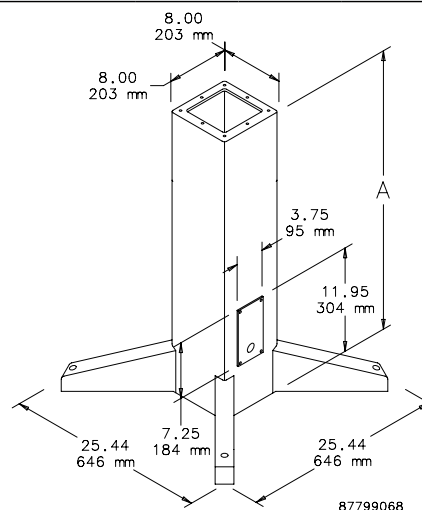
Stainless Steel Pedestal



Pedestal is 36 inches (914mm) tall and provides optimal viewing and operating height. Tube is 14 gauge Type 304 one-piece construction. Legs are 7 gauge Type 304 for rigidity. Cable access plate and leg levelers are included. Leg levelers can be removed for anchoring pedestal to floor. Pedestal has smooth vertical brushed finish.

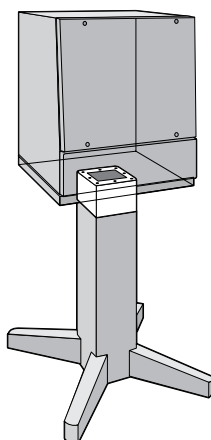
NOTE: Pedestal will accept pedestal accessories that are not stainless steel. These include swivel tilt, swivel, and angle adapters.

Catalog Number	A (in.)	A (mm)	Description
AP36SS	36.0	914	Stainless steel



87799068

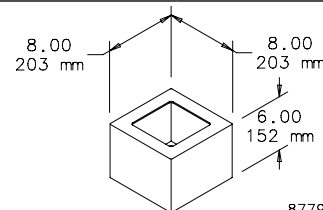
Stainless Steel Extension



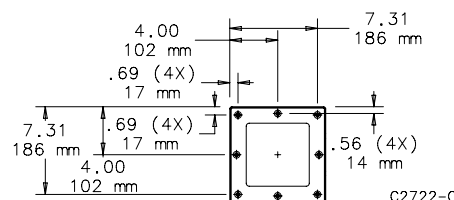
Pedestal extension can be ordered separately to provide additional 6 inches (152mm) of height for standing position. Extension is 14 gauge Type 304 stainless steel with a smooth brushed finish.

NOTE: Extension will accept pedestal accessories that are not stainless steel. These include swivel tilt, swivel, and angle adapters.

Catalog Number	Description
APE6SS	Stainless steel



87799067



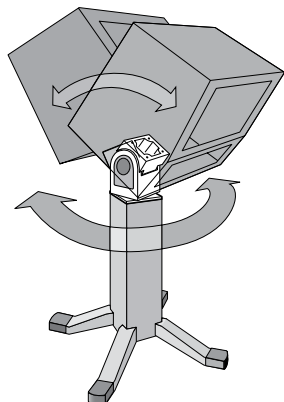
C2722-C

HOLE PATTERN

Pedestals and Pedestal Accessories

Bulletin
PI, PIS

Swivel Tilt

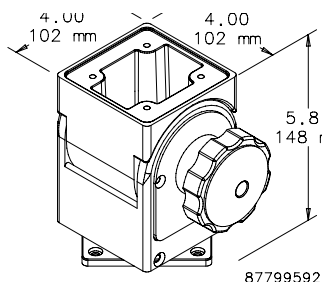


The use of a combination swivel and tilt mechanism allows a machine operator to rotate and also tilt an operator interface enclosure for optimum viewing and safe operation. The swivel tilt is designed for use between the bottom of an operator interface enclosure and a pedestal (enclosure reinforcement may be required).

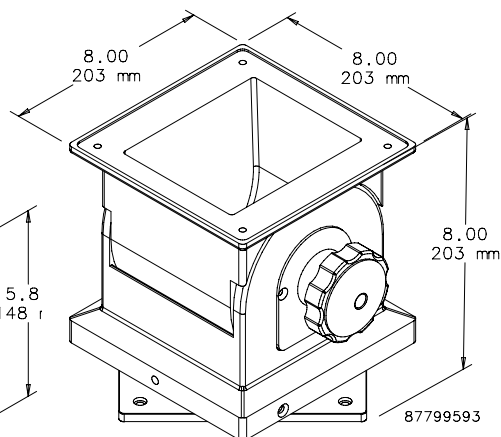
Do not use the swivel tilt between an overhead support and an enclosure.

The swivel feature allows maximum rotation of 350 degrees. Integral

stops are provided at 30-degree increments between 60 degrees and 180 degrees of rotation. Swivel can be locked in any position. The tilt feature allows forward and backward movement up to 30 degrees from horizontal. The tilt lock has a large release knob that allows quick incremental adjustment. Top and bottom flanges allow easy installation on pedestals. A large center opening accommodates control cables that have attached plugs. The swivel tilt is cast aluminum with an anodized finish. Mounting hardware and gaskets are furnished.



AST44



AST88

Catalog Number	Fits	Max. Enclosure Size A x B x C (in.)	Max. Enclosure Size A x B x C (mm)	Max. Load Including Enclosure (lb)	Max. Load Including Enclosure (kg)
AST44	4 x 4 pedestal	24.00 x 24.00 x 16.00	610 x 610 x 406	75	34.0
AST88	8 x 8 pedestal	33.00 x 24.00 x 24.00	838 x 610 x 610	150	68.0

Swivel



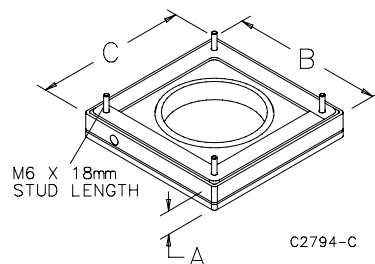
A swivel mechanism can be used to allow a machine operator a way to easily rotate an operator interface enclosure to a convenient operating position. Maximum rotation is 350 degrees. The low profile swivel has a large center opening in addition to a large, wobble-free bearing surface. Integral stops are provided at 30-degree increments between 60 degrees and 180 degrees of rotation.

Swivel mechanism can be locked in any position. The swivel mechanism is designed for use between the bottom of an operator interface enclosure and a pedestal.

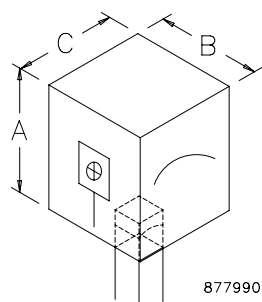
Do not use the swivel between an overhead support and an enclosure.

The swivel is cast aluminum with an anodized finish. Mounting hardware and gaskets are furnished.

Catalog Number	Maximum Enclosure Size A x B x C (in.)	Maximum Enclosure Size A x B x C (mm)	Maximum Load Including Enclosure (lb)	Maximum Load Including Enclosure (kg)
ASWV44	24.00 x 24.00 x 16.00	610 x 610 x 406	100 lbs	45.4
ASWV88	33.00 x 24.00 x 24.00	838 x 610 x 610	200 lbs	90.7



Swivel and Swivel Tilt Loading



The loads listed in the tables above and at right assume that the additional load is centered on the front or back of the enclosure. Please contact Hoffman for specific application information.

Catalog Number	Description	Maximum Enclosure Size A x B x C (in.)	Maximum Enclosure Size A x B x C (mm)	Max. Load Including Enclosure (lbs)	Max. Load Including Enclosure (kg)
AST44	4 x 4 Swivel Tilt	24.00 x 24.00 x 16.00	610 x 610 x 406	75	34.0
AST88	8 x 8 Swivel Tilt	33.00 x 24.00 x 24.00	838 x 610 x 610	150	68.0
ASWV44	4 x 4 Swivel	24.00 x 24.00 x 16.00	610 x 610 x 406	100	45.4
ASWV88	8 x 8 Swivel	33.00 x 24.00 x 24.00	838 x 610 x 610	200	90.7

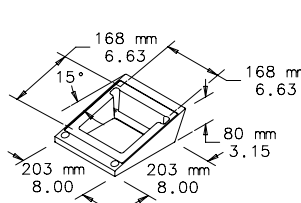
Pedestals and Pedestal Accessories

Angle Adapter

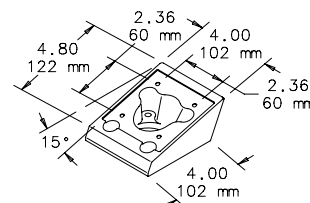


Angle adapter fits top of pedestal and provides a fixed tilt of 15 degrees from horizontal for enclosure mounting. Angle adapter is aluminum with large cable opening. Finish is clear anodized aluminum. Mounting hardware is included.

Catalog Number	Fits
AAA1544	4 x 4 pedestal
AAA1588	8 x 8 pedestal



AAA1588



AAA1544

C2795-C

Handles



PUHKA

PUHK

Handles attach to sides, top, or bottom of an enclosure to provide maximum operator control when using a pendant arm, swivel, or swivel tilt.



CCCH150, CCCH220,
CCCH300

Catalog Number	Description	Fits
CCCH150	150mm	COMPACT "CC1"
CCCH220	220mm	COMPACT "CC1"
CCCH300	300mm	COMPACT "CC1"
ERCFH3U	132mm	Desk top case
ERCFH4U	177mm	Desk top case
ERCFH6U	266mm	Desk top case
PUHKA	248mm	PROLINE sloped tops
PUHK	9.75 inches	PROLINE sloped tops

Pedestal Caster Kits



Casters can be used on pedestals in limited applications. They are fitted to the die-cast legs of steel pedestals. Casters are also available for stainless steel pedestals (AC4M6SV or AC4M6ST). Four dual-wheel casters replace furnished levelers.

Catalog Number	Description	Height (in.)	Height (mm)	Wheel Dia. (in.)	Wheel Dia. (mm)	Load Rating Ea. (lb.)	Load Rating Ea. (kg)
AC4M6SV	(2) casters, swivel type with brakes	3.72	94	3.00	76	210	95
EMRCK	(4) casters, swivel non-locking for steel pedestals	2.76	70	1.97	50	132	60
AC4M6ST	(2) casters, stationary type	3.72	94	3.00	76	210	95

Stainless Steel Legs

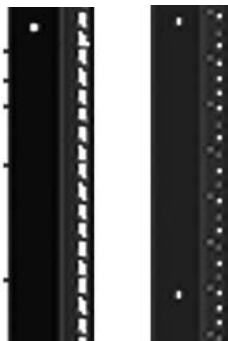


Legs can be mounted to sloped tops with a solid base. The legs raise the sloped top 4 inches (100mm) off the floor. The legs are appropriate for hose-down applications. Mounting hardware is included.

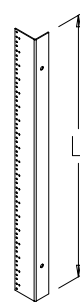
Catalog Number	Description	Bulletin Number
PLEGSS	(4) Stainless steel legs	P20S

Rack Angles

19 in. and 23 in. Rack Angles



Made of 14 gauge steel with square holes or 12 gauge steel with 10-32 tapped holes. Provides 19 or 23 in. rack spacing depending on frame width. Finished with flat black RAL 9005 polyester powder paint or plated. Furnished in pairs.



87570462

Square Hole Catalog Number	Tapped Hole Catalog Number	Description	Finish	Use With	Fits Frame/Cabinet Height	Fits Frame/Cabinet Width	Rack Units	L (mm)	L (in.)
ERA197THLN	ERA197TPLN	19 in.	Black paint	Networking Cabinet - SOHO	700mm	600mm	11	492	19.38
ERA1912THLN	ERA1912TPLN	19 in.	Black paint	Networking Cabinet	1200mm	600mm	23	1025	40.37
ERA1921THLN	—	19 in.	Black paint	Networking Cabinet	2100mm	600mm	45	2003	78.87
—	ERA1921TPL	19 in.	Black paint	Networking Cabinet	2100mm	700mm	45	2003	78.87
—	ERA192321TPL	19 & 23 in.	Black paint	Networking Cabinet	2100mm	800mm	45	2003	78.87
—	ERA1910TPL	19 in.	Black paint	Network PC Cabinet	Bottom Section	—	19	848	33.37
—	ERA1924TPLWM	19 in.	Plated	Wall Mount Cabinet	24 in.	—	12	533	21.00
—	ERA1936TPLWM	19 in.	Plated	Wall Mount Cabinet	36 in.	—	19	845	33.25
—	ERA1948TPLWM	19 in.	Plated	Wall Mount Cabinet	48 in.	—	26	1156	45.50

Rack Unit Label



Self-adhesive clear Mylar™ label with white numbers enables numbering along sides of open frame racks or rack angles. Numbers spaced one rack unit apart. Can be used for bottom-up or top-down numbering of rack units to simplify equipment installation. Each label provided in two pieces (numbers 1-29 and 30-58) for easier installation. Two labels per catalog number. Label shown mounted on rack angle.

Catalog Number	Installed Length (in.)	Installed Length (mm)	Width (in.)	Width (mm)
ARULABEL	101.50	2578	.50	13

Mylar™ is a registered trademark of DuPont Tejin Films.