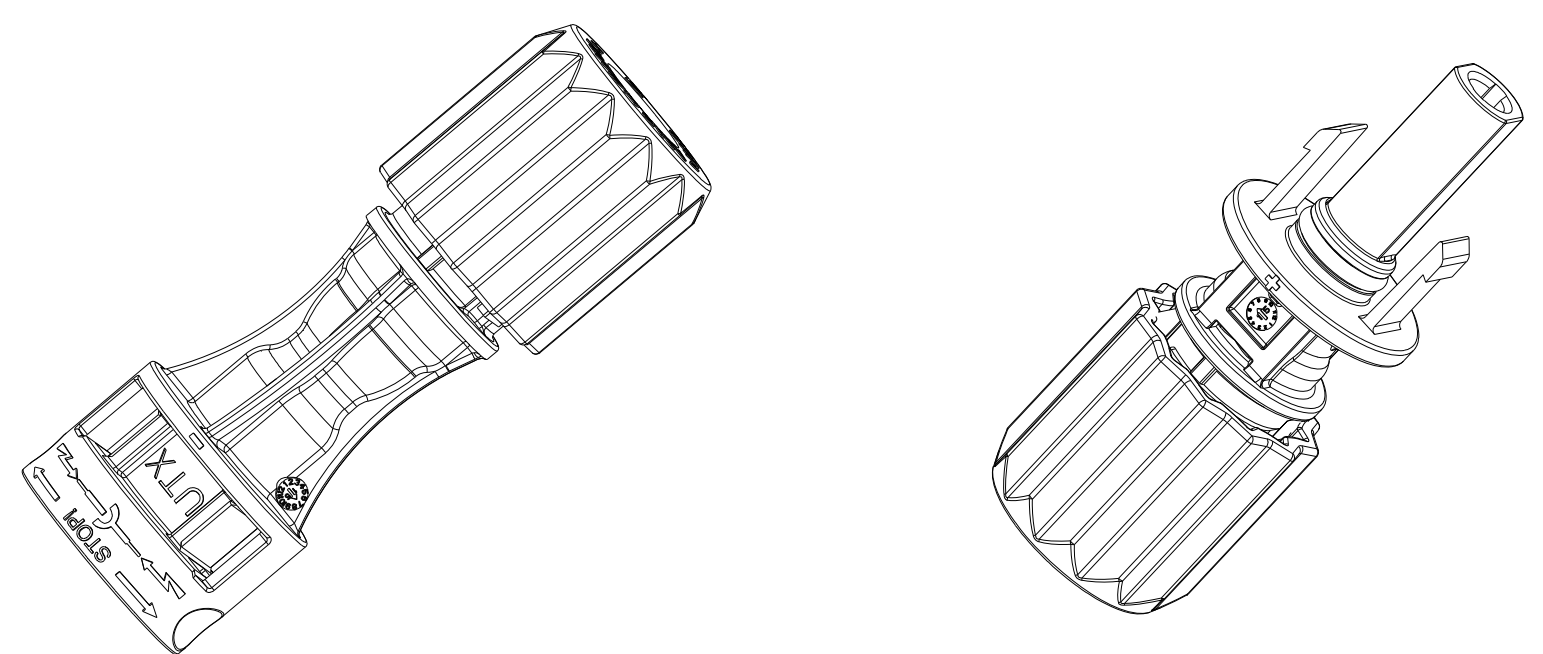


CUSTOMER DRAWING



REVISIONS		
LTR	DESCRIPTION	DATE
B	ADD CABLE RANGE	2015-02-05
C	UPDATE DIMENSION	2015-06-30
D	UPDATE UL RATED VOLTAGE	2015-07-28
E	UPDATE CERTIFICATE LOGO	2015-08-24
F	ADD COLD FORMING CONTACT INFORMATION	2016-03-03
G	ADD THE C&F CONTACT RESISTANCE VALUE	2016-04-20

DOCUMENT NO. UTXC ()
 SHEET 1 OF 3
 REV. G

3. THE MARK OF LETTERS JUST THE VERSION OF THE PLASTIC PARTS FOR AMPHENOL'S MANUFACTURE PROCEDURE, WHEN THE CUSTOMER INSPECT THE PRODUCT, THEY CAN IGNORE THESE NUMBERS.
 2. SPECIFICATIONS

DESCRIPTIONS	SPECIFICATIONS			
RATED CURRENT	CONTACT SIZE			CERTIFICATE NO.
	2.5mm ² /14AWG	4.0mm ² /12AWG	6.0mm ² /10AWG	
TUV(85°C)	31A	42A	53A	R 50283691
JET	30A	40A	50A	1650-C4302-170
UL	15A	20A	30A	E469330
ETL	15A	20A	30A	4010084
RATED SYSTEM VOLTAGE	1000VDC (ETL) 1500VDC (UL/TUV/JET)			
DEGREE OF PROTECTION (MATED)	IP68			
CONTACT MATERIAL	COPPER, TIN PLATED			
INSULATION MATERIAL	THERMOPLASTIC			
AMBIENT TEMPERATURE RANGE	-40 °C TO +90 °C			
CABLE APPLICABILITY	UL PV WIRE (14/12/10AWG) TUV PVI-F WIRE (2.5/4/6mm ²) S-JET PV-CC WIRE (2.5-6mm ²)			
CONTACT RESISTANCE	0.30m Ω TYP FOR S&F CONTACT 0.25m Ω TYP FOR C&F CONTACT			
APPLICATION CLASS	CLASS A			
FLAMMABILITY RATING	UL94 V-0			
CABLE RANGE	Ø 5.3mm TO Ø 7.65mm			

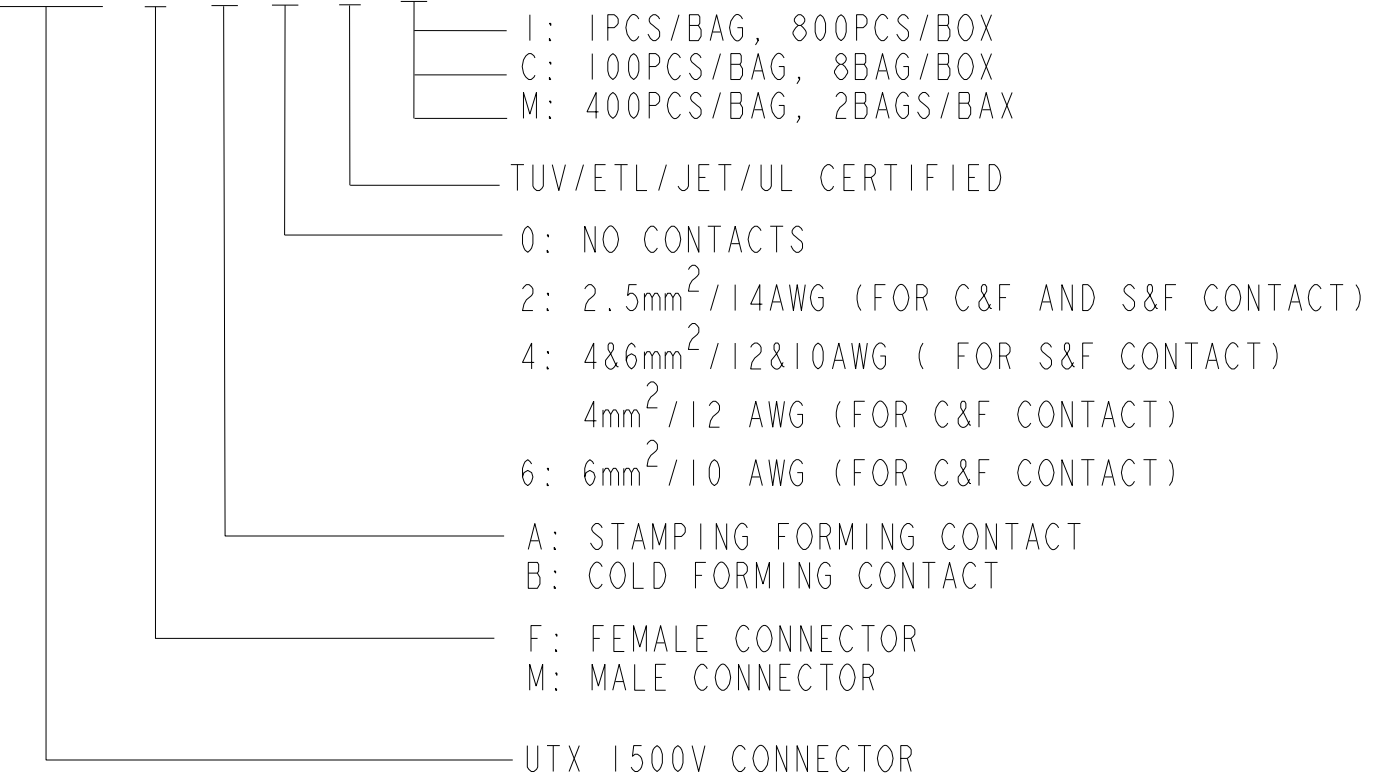
1. USE ONLY CRIMP TOOL AMPHENOL UTXTC0002 FOR STAMPING FORMING CONTACT.

NOTES:
 THIS DOCUMENT CONTAINS PROPRIETARY INFORMATION AND SUCH INFORMATION MAY NOT BE DISCLOSED TO OTHERS FOR ANY PURPOSE OR USED FOR MANUFACTURING PURPOSES WITHOUT WRITTEN PERMISSION FROM THE AMPHENOL CORP.

N/A	PRO/ENGINEER INFORMATION
NEXT ASSEMBLY	Pro/e Model Used: PV-692870-1109-CUS.PART
METRIC DOCUMENT	Drawing Name: PV-692870-1109-CUS

ORDER P/N IN SYSTEM

C/N: UTXC F A 2 A M

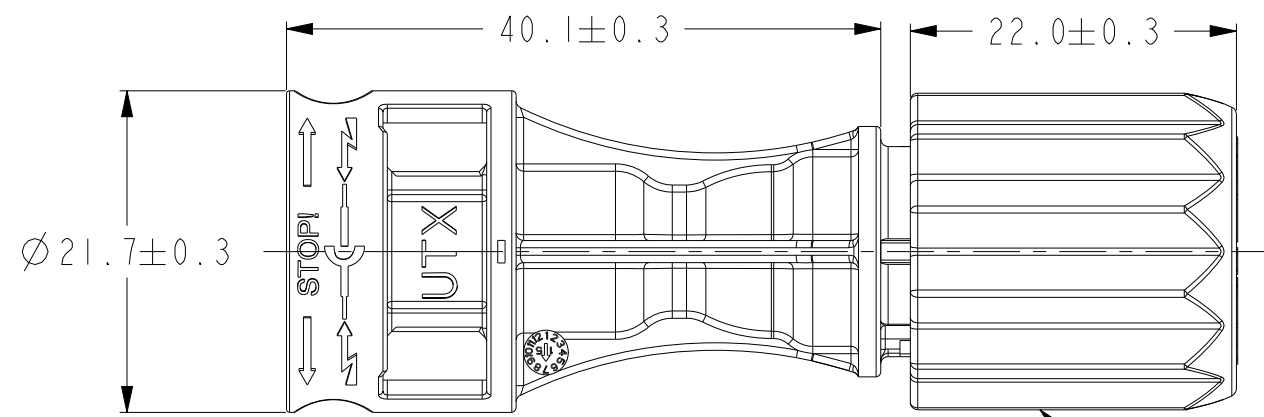
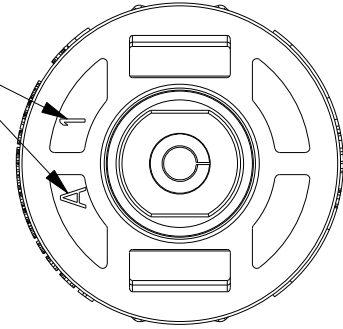


UNLESS OTHERWISE SPECIFIED	SPECIFICATIONS	POS	QTY	PART NUMBER	DESCRIPTION	NOTE
LINEAR DIMENSIONS ARE IN: MILLIMETERS TOLERANCES: ANGLES= ±2° DEFAULT LINEAR TOLERANCES SEE TABLE DIM. & TOL. PER ASME Y14.5M-1994; DRW PER MIL-DTL-31000; OTHER AMPHENOL STANDARDS: 9-9318 LEGENDS: △=FLAG NOTE CALL OUT REFERENCE ONLY	MATERIAL SPEC.	PARTS LIST				
	N/A	APPROVALS	DATE	Amphenol Technology (ShenZhen) Co., Ltd. Building C, 2nd Industrial Zone of Xia Shi Jia, Jiangshi Community, Gongming Sub-district, Guangming New District, Shenzhen, PRC		
PROCESS SPEC.	THIRD ANGLE PROJECTION		UTX CONNECTOR CUSTOMER DRAWING			
N/A			SIZE	CAGE CODE	DOCUMENT NO.	REV.
			C	/	UTXC ()	G
			SCALE: 1.0	REF.	SHEET 1 OF 3	

FORMAT: C-L-E-Rev.B
 DOCUMENT NO. UTXC ()
 SHEET 1 OF 3
 REV. G

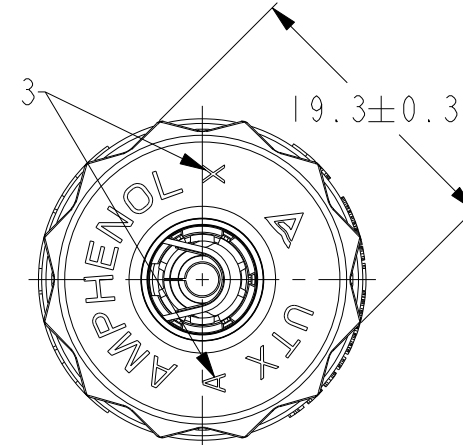
DOCUMENT NO. UTXC ()
 SHEET 1 OF 3
 REV. G

SEE NOTES 3

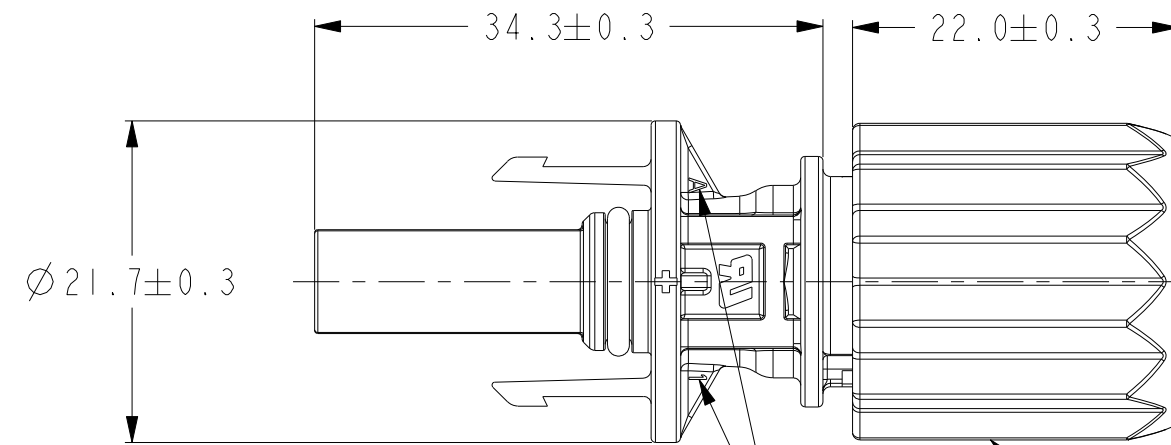


WRENCH TOOL: UTXTWA001

SEE NOTES 3



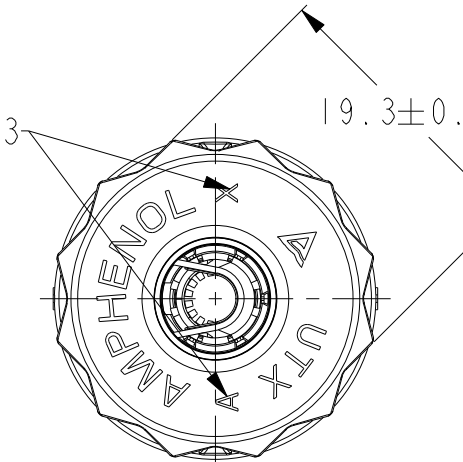
MALE END



SEE NOTES 3

WRENCH TOOL: UTXTWA001

SEE NOTES 3



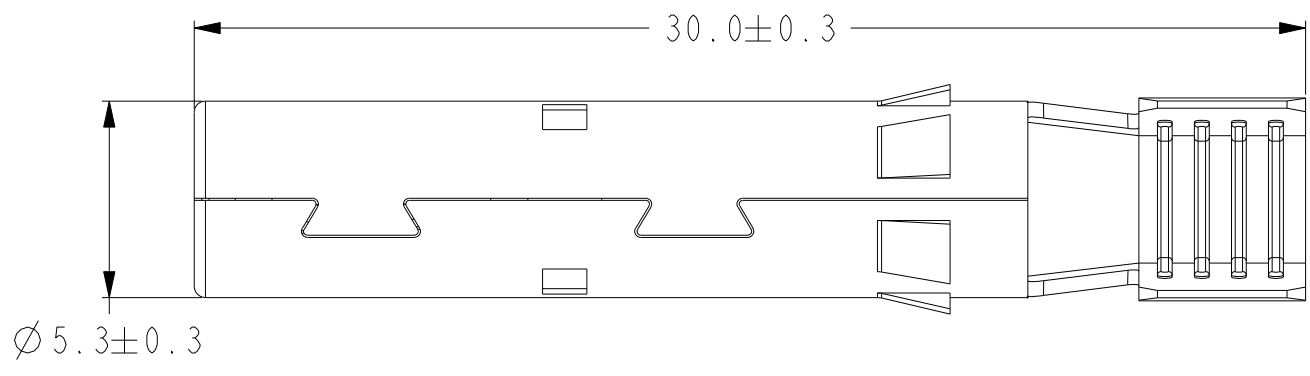
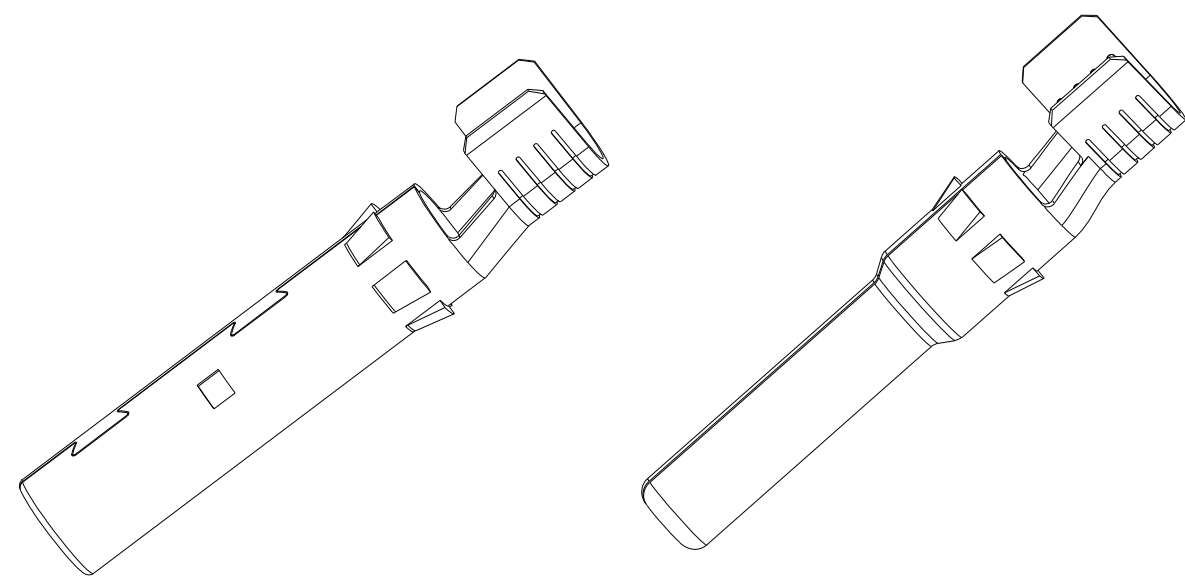
FEMALE END

NOTES:

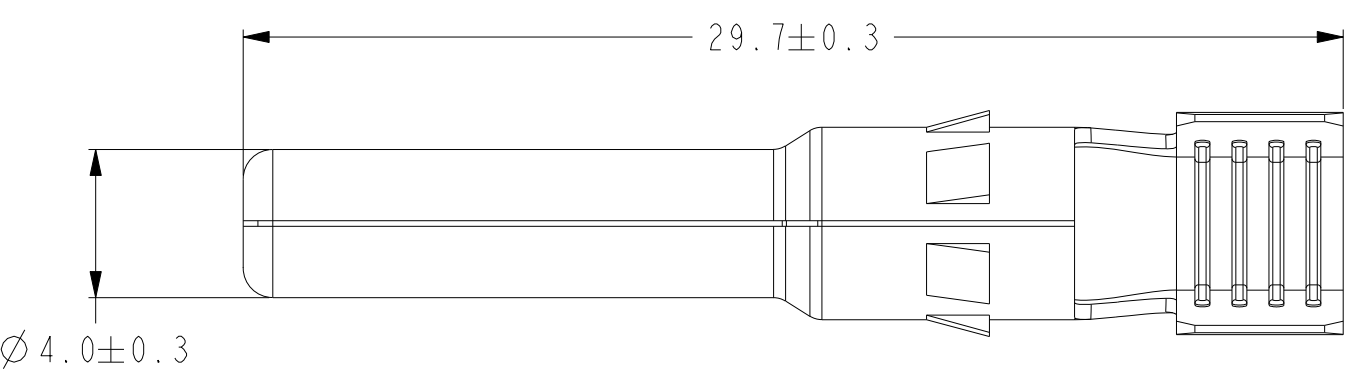
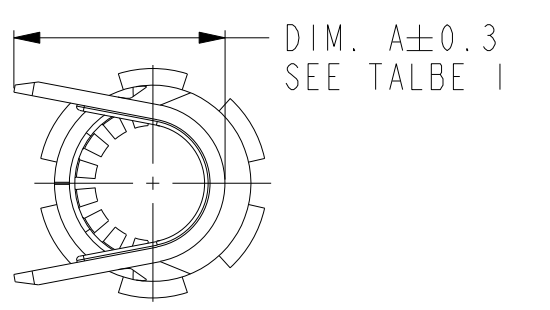
THIS DOCUMENT CONTAINS PROPRIETARY INFORMATION AND SUCH INFORMATION MAY NOT BE DISCLOSED TO OTHERS FOR ANY PURPOSE OR USED FOR MANUFACTURING PURPOSES WITHOUT WRITTEN PERMISSION FROM THE AMPHENOL CORP.

SIZE C	CAGE CODE /	DOCUMENT NO. UTXC ()	REV. G
SCALE: 1.0		REF:	SHEET 2 OF 3

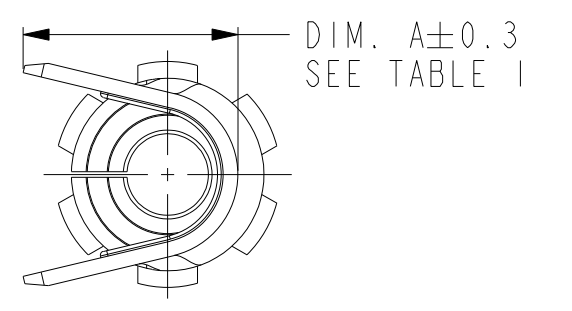
STAMPING FORMING CONTACT



PIN

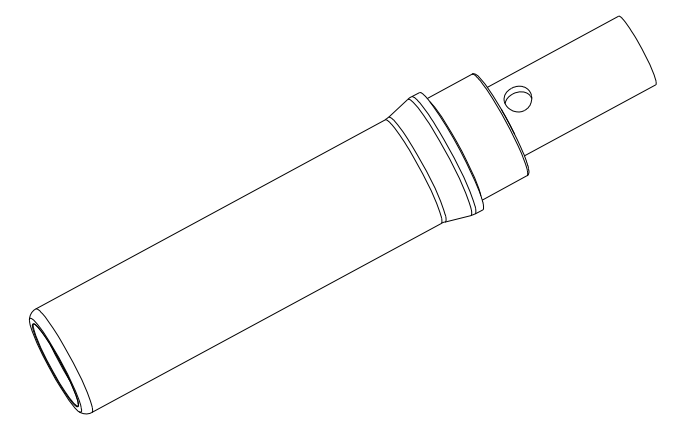


SOCKET



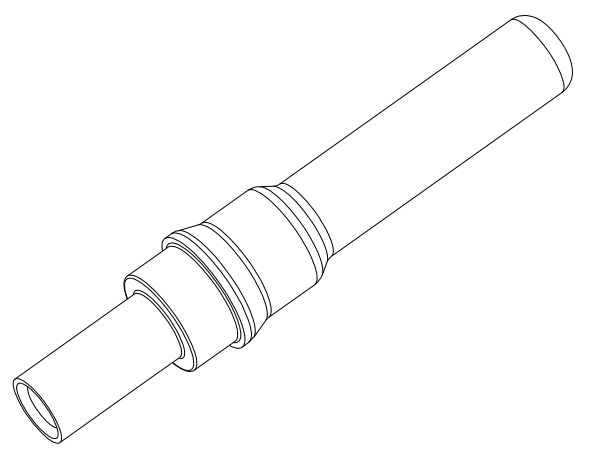
CABLE SIZE	A (mm)
1.5mm ² & 2.5mm ²	4.8
4.0mm ² & 6.0mm ²	5.8

COLD FORMING CONTACT



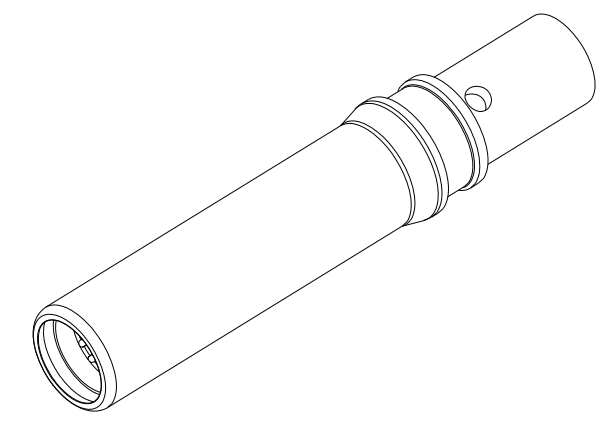
2.5mm² (14 AWG) PROFILE SHOW

ACCEPT WIRE CONDUCTOR SIZE mm ² (AWG)	"A"	"B"
2.5 (14)	2.30	3.50
4.0 (12)	3.05	4.60
6.0 (10)	3.75	5.25

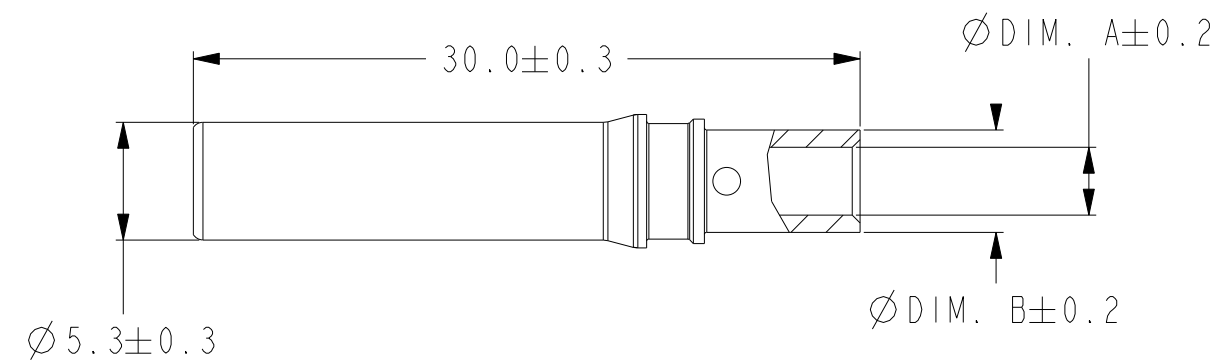


2.5mm² (14 AWG) PROFILE SHOW

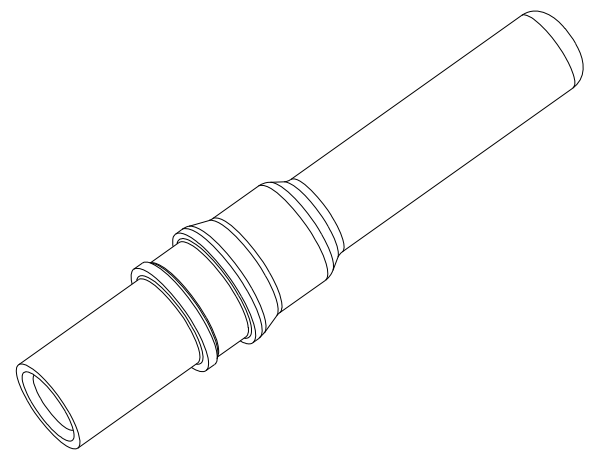
ACCEPT WIRE CONDUCTOR SIZE mm ² (AWG)	"C"	"D"
2.5 (14)	2.30	3.50
4.0 (12)	3.05	4.60
6.0 (10)	3.75	5.25



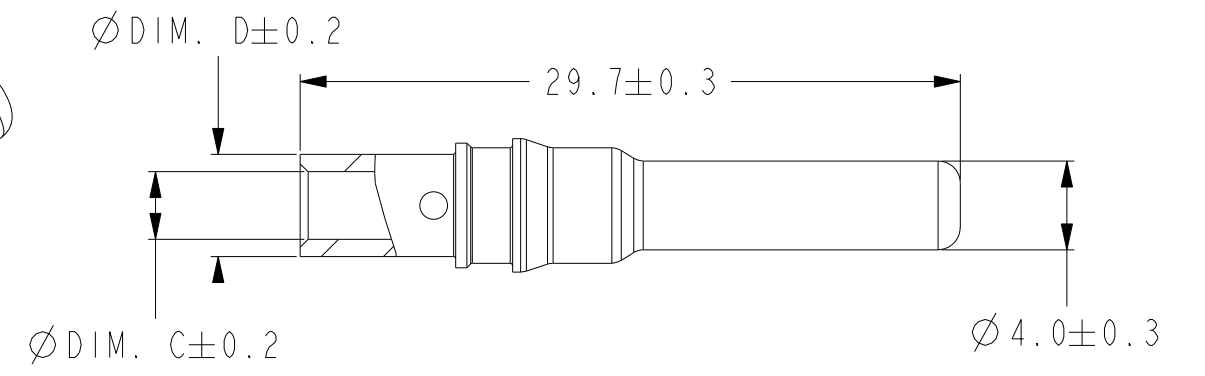
4mm² (12 AWG); 6mm² (10 AWG) PROFILE SHOW



SOCKET



4mm² (12 AWG); 6mm² (10 AWG) PROFILE SHOW



PIN

NOTES:

THIS DOCUMENT CONTAINS PROPRIETARY INFORMATION AND SUCH INFORMATION MAY NOT BE DISCLOSED TO OTHERS FOR ANY PURPOSE OR USED FOR MANUFACTURING PURPOSES WITHOUT WRITTEN PERMISSION FROM THE AMPHENOL CORP.