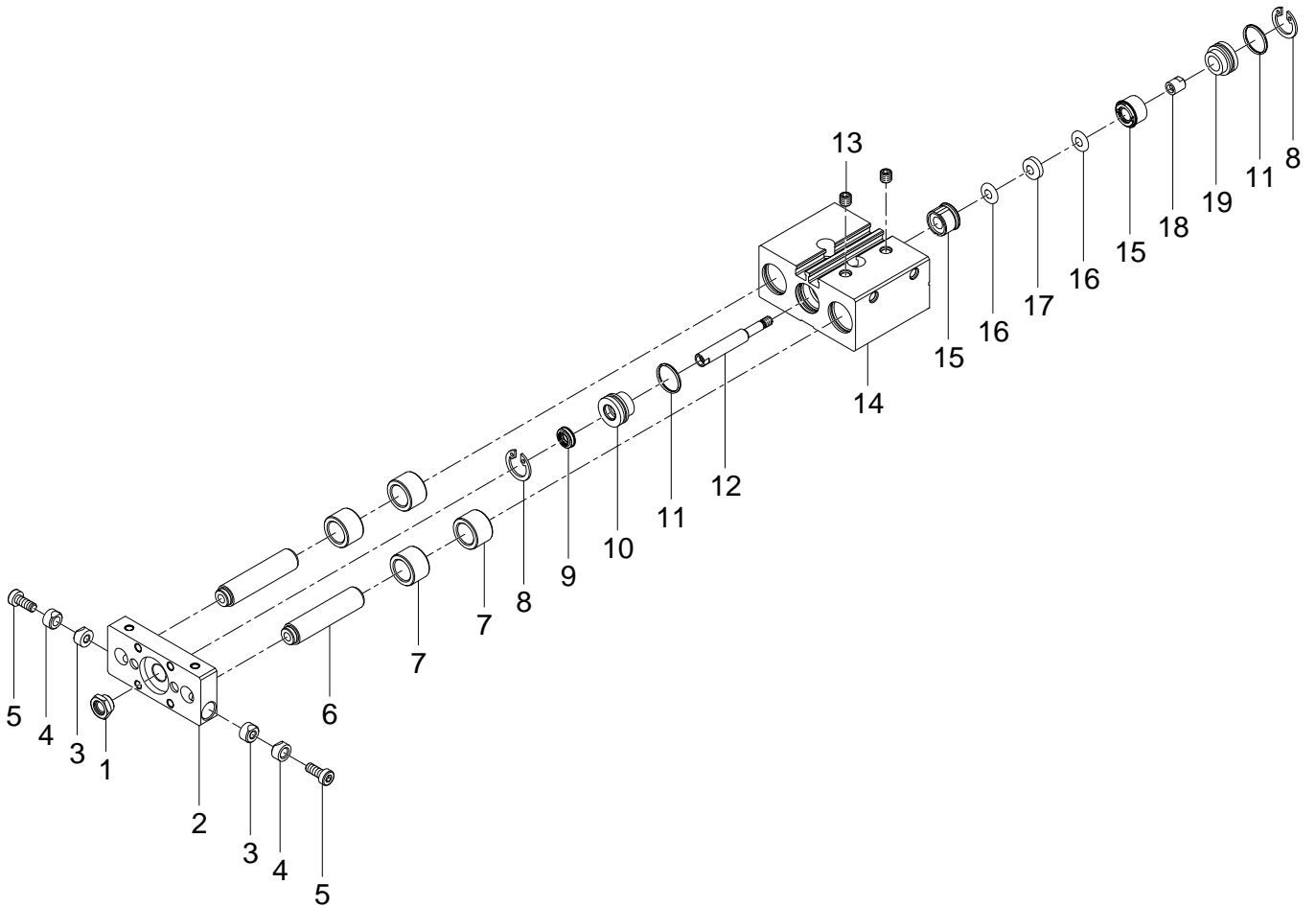


170826 DFM-12-25-P-A-GF Guided drive - Series till 02-2015



170826 DFM-12-25-P-A-GF Guided drive - Series till 02-2015

Pos.	Part no.	Type	Note	Qty.	Unit
A	383662	DFM- 12-PA Set of wearing parts	Spare parts: 9, 11, 15 Replacing the wearing parts	1	PC
1	5400961	M6 Collar nut	Use locking compound 8181256 CYBERBOND TM44 Tightening torque 6.8 Nm / 5.0 lbf ft	1	PC
2	703136	DFM-12-B End plate		1	PC
3	368004	M 4 Clamping piece		2	PC
4	368003	M 4 Clamping piece		2	PC
5	369843	DIN 6912-M4X10-8.8 Socket head screw	Use locking compound 8181256 CYBERBOND TM44 Tightening torque 3 Nm / 2.2 lbf ft	2	PC
6	367977	DFM-12-25-P-A-GF Guide rod		2	PC
7		DFM-12 Plain bearing	Not available	4	PC
8	206348	DIN 472-14X1 Retaining ring		2	PC
9		WIFC1-6X9X2,8-TPE-U Wiper seal	Not available separately, see position A Lubricate with 684474 LUB-KC1 during assembly	1	PC
10	713392	DFM-12-...-P-A Bearing cap		1	PC
11		B-12X1-N-NBR75 O-ring ISO3601	Not available separately, see position A Lubricate with 684474 LUB-KC1 during assembly	2	PC
12	367993	ARA-06-S0037,25-A5B Piston rod		1	PC
13	369947	M5X5 Plug screw module		2	PC
14		DFM- 12- 25PA Housing	Not available Lubricate with 684474 LUB-KC1 during assembly	1	PC
15		PEFC1-12-TPE-U Piston seal	Not available separately, see position A Lubricate with 684474 LUB-KC1 during assembly	2	PC
16	338262	4X10X0,4-1.0350 Disc		2	PC
17	338401	10,5X4,05X2,7 Ring magnet		1	PC
18	338224	ADVU- 12- -PA Collar nut	Use locking compound 8181256 CYBERBOND TM44 Tightening torque 0.8 Nm / 0.6 lbf ft	1	PC
19		DFM-12-...-P-A End cap	Not available	1	PC