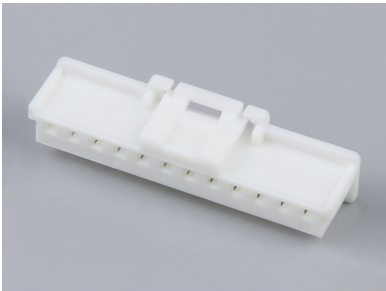




Part Number : [5023511200](#)
Product Description : DuraClik Wire-to-Board
Receptacle Housing, Single Row, 12 Circuits,
Natural
Series Number : 502351
Status : Active
Product Category : Connector Housings



Documents & Resources


Drawings
[5023511200_sd.pdf](#)

3D Models and Design Files
[5023511200_stp.zip](#)

Specifications
[PK-502351-001-001.pdf](#)
[PS-502351-001-001.pdf](#) (Tin Plating)
[PS-502351-002-001.pdf](#) (Gold Plating)

Product Environment Compliance

Compliance

GADSL/IMDS	Compliant
China RoHS	
EU ELV	Compliant per 2000/53/EC
Low-Halogen Status	Not Low-Halogen per IEC 61249-2-21
REACH SVHC	Not Contained per D(2024)7663-DC (21 Jan 2025)
EU RoHS	Compliant per EU 2015/863

Multiple Part Product Compliance Statements
- Eu RoHS
- REACH SVHC
- Low-Halogen

Multiple Part Industry Compliance Documents
- IPC 1752A Class C

- IPC 1752A Class D
- Molex Product Compliance Declaration
- IEC-62474
- chemSHERPA (xml)

EU RoHS Certificate of Compliance

Part Details

General

Status	Active
Category	Connector Housings
Series	502351
Description	DuraClik Wire-to-Board Receptacle Housing, Single Row, 12 Circuits, Natural
Application	Automotive, Signal, Wire-to-Board
Comments	Molex part has an inner-locking system versus an outer-locking system. Molex part with tail protection feature.
Product Name	DuraClik
UPC	887191324050

Physical

Circuits (maximum)	12
Color - Resin	Natural
Gender	Receptacle
Glow-Wire Capable	No
Keying to Mating Part	Yes
Lock to Mating Part	Yes
Material - Resin	Polyester Alloy
Number of Rows	1
Packaging Type	Bag
Panel Mount	No
Pitch - Mating Interface	2.00mm
Polarized to Mating Part	Yes
Temperature Range - Operating	-40° to +105°C

Solder Process Data

Lead-Free Process Capability	N/A
------------------------------	-----

Mates With / Use With

Mates with Part(s)

Description	Part Number
DuraClik Right-Angle Single Row Headers	<u>502352</u>
DuraClik Vertical Single Row Headers	<u>560020</u>

Use with Part(s)

Description	Part Number
Pre-Crimped Lead DuraClik Female-to-DuraClik Female, Tin (Sn) Plating, 150.00mm Length, 26 AWG, Black	<u>797581008</u>
Pre-Crimped Lead DuraClik Female-to-DuraClik Female, Tin (Sn) Plating, 300.00mm Length, 26 AWG, Black	<u>797581009</u>
DuraClik Female Crimp Terminals	<u>560085</u>
Micro-Latch Female Crimp Terminals	<u>50212</u>
DuraClik Female Terminals	<u>56161</u>