



Connectors > Rectangular Connectors > Standard Rectangular Connectors



Connector Product Type: **Housing**

Connector & Housing Type: **Plug**

Mating Alignment: **With**

Mating Alignment Type: **Polarization**

Mating Retention: **With**

Features

Product Type Features

| | |
|-----------------------------------|-----------------------------|
| Connector Product Type | Housing |
| Connector & Housing Type | Plug |
| Connector System | Wire-to-Panel, Wire-to-Wire |
| Sealable | No |
| Connector & Contact Terminates To | Wire & Cable |

Configuration Features

| | |
|---------------------|----|
| Number of Positions | 14 |
| Number of Rows | 2 |

Electrical Characteristics

| | |
|-------------------|---------|
| Operating Voltage | 250 VAC |
|-------------------|---------|

Body Features

| | |
|-----------------------|-------|
| Primary Product Color | Black |
|-----------------------|-------|

Contact Features

| | |
|--|--|
| | |
|--|--|



| | |
|----------------------------------|---------|
| Contact Type | Pin |
| Contact Retention Within Housing | Without |

Termination Features

| | |
|------------------------------------|-------|
| Termination Method to Wire & Cable | Crimp |
|------------------------------------|-------|

Mechanical Attachment

| | |
|--------------------------|---------------|
| Strain Relief | Without |
| Panel Mount Feature | With |
| Panel Mount Feature Type | Locking Latch |
| Mating Alignment | With |
| Mating Alignment Type | Polarization |
| Mating Retention | With |
| Mating Retention Type | Locking Tab |
| Connector Mounting Type | Panel Mount |

Housing Features

| | |
|--------------------|---------------|
| Housing Material | Nylon |
| Centerline (Pitch) | 3 mm[.118 in] |

Dimensions

| | |
|--------------------------------------|-------------------------------|
| Row-to-Row Spacing | 3 mm[.118 in] |
| Panel Thickness (Recommended) | 1.57 – 2.3 mm[.062 – .091 in] |
| Compatible Insulation Diameter (Max) | 1.52 mm[.06 in] |
| Connector Width | 16.89 mm |
| Connector Height | 8.71 mm |
| Connector Length | 18.85 mm |

Usage Conditions

| | |
|-----------------------------|----------------------------|
| Operating Temperature Range | -40 – 105 °C[-40 – 221 °F] |
|-----------------------------|----------------------------|

Operation/Application

| | |
|---------------------|----------------|
| Circuit Application | Power & Signal |
|---------------------|----------------|

Industry Standards

| | |
|---|-------------------------|
| Compatible With Agency/Standards Products | CNR, USR |
| UL Rating | Recognized |
| Compatible With Approved Standards Products | UL E28476, VDE 40005280 |
| CSA Rating | Certified, LR 7189 |



| | |
|------------------------|-------------------------------|
| Glow Wire Rating | Standard Part - Not Glow Wire |
| UL Flammability Rating | UL 94V-0 |

Packaging Features

| | |
|--------------------|-----|
| Packaging Quantity | 500 |
| Packaging Method | Bag |

Product Compliance

For compliance documentation, visit the product page on TE.com>

| | |
|---|---|
| EU RoHS Directive 2011/65/EU | Compliant |
| EU ELV Directive 2000/53/EC | Compliant |
| China RoHS 2 Directive MIIT Order No 32, 2016 | No Restricted Materials Above Threshold |
| EU REACH Regulation (EC) No. 1907/2006 | Current ECHA Candidate List: JAN 2025 (247) Candidate List Declared Against: JAN 2025 (247) Does not contain REACH SVHC |
| Halogen Content | Low Halogen - Br, Cl, F, I < 900 ppm per homogenous material. Also BFR/CFR/PVC Free |
| Solder Process Capability | Not applicable for solder process capability |

Product Compliance Disclaimer

This information is provided based on reasonable inquiry of our suppliers and represents our current actual knowledge based on the information they provided. This information is subject to change. The part numbers that TE has identified as EU RoHS compliant have a maximum concentration of 0.1% by weight in homogenous materials for lead, hexavalent chromium, mercury, PBB, PBDE, DBP, BBP, DEHP, DIBP, and 0.01% for cadmium, or qualify for an exemption to these limits as defined in the Annexes of Directive 2011/65/EU (RoHS2). Finished electrical and electronic equipment products will be CE marked as required by Directive 2011/65/EU. Components may not be CE marked. Additionally, the part numbers that TE has identified as EU ELV compliant have a maximum concentration of 0.1% by weight in homogenous materials for lead, hexavalent chromium, and mercury, and 0.01% for cadmium, or qualify for an exemption to these limits as defined in the Annexes of Directive 2000/53/EC (ELV). Regarding the REACH Regulation, the information TE provides on SVHC in articles for this part number is based on the latest European Chemicals Agency (ECHA) ‘Guidance on requirements for substances in articles’ posted at this URL: <https://echa.europa.eu/guidance-documents/guidance-on-reach>

Compatible Parts

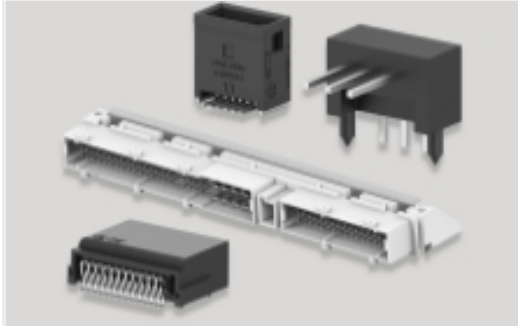


TE Part # 1-794617-4
14POS,MICRO MNL,RCPT HSG

Also in the Series | Micro MATE-N-LOK



Connector Contacts(27)



PCB Headers & Receptacles(371)



Power Contacts(27)



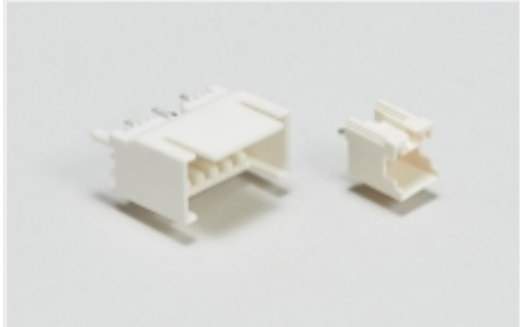
Rectangular Connector Housings(98)



Rectangular Power Connectors(469)

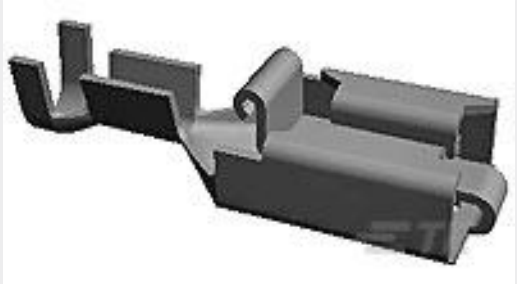


Standard Rectangular Connectors(98)



Wire-to-Board Headers & Receptacles (371)

Customers Also Bought



TE Part #154717-3
PL 250 REC TERMINAL 14-11 AWG TPBR



TE Part #1-794617-4
14POS,MICRO MNL,RCPT HSG



TE Part #5554349-1
EMI RCPT ASSY, 24 POS, SHLD



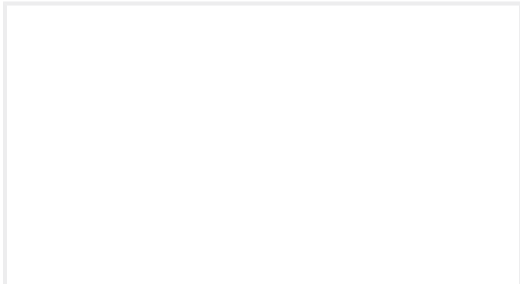
TE Part #5-2176406-1
3560 120R 1%



TE Part #1-794616-0
FREE HANG DBL ROW HSG 10 POS



TE Part #1-2176250-0
TJT 500W 33R 5%



TE Part #1SNA115409R2600
MB4/6.L5



TE Part #5-1437622-5
KN501BA1/8=KNOB BLK/ALUM 1/8 I



Documents

Product Drawings

PANEL MT DBL ROW HSG 14 POS

English

CAD Files

3D PDF

3D

Customer View Model

ENG_CVM_CVM_1-794615-4_C1.2d_dxf.zip

English

Customer View Model

ENG_CVM_CVM_1-794615-4_C1.3d_igs.zip

English

Customer View Model

ENG_CVM_CVM_1-794615-4_C1.3d_stp.zip

English

By downloading the CAD file I accept and agree to the [Terms and Conditions](#) of use.

Datasheets & Catalog Pages

SOFT_SHELL_PIN_AND_SOCKET_CONNECTORS_CATALOG

English

MICRO MATE-N-LOK CONNECTOR SYSTEM

English

Product Specifications

Application Specification

English

Agency Approvals

UL Report

English