

15 1503 20

Jack connectors

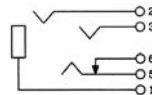
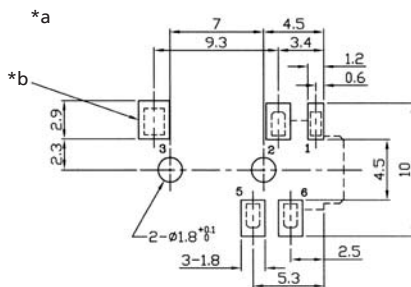
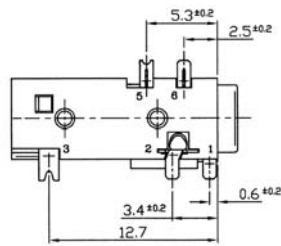
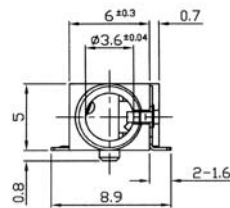
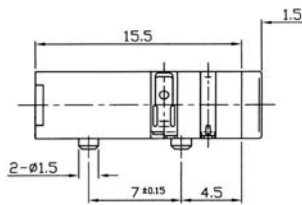
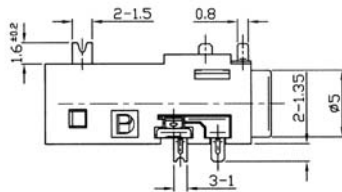


Jack chassis socket according to JEITA RC-5325A, 3.5 mm, 4 poles/stereo, with break contact, angular version, for printed circuit boards, surface mount technology (SMT)

State: New

15

1503 20



Environmental conditions

Temperature range -20 °C/+70 °C

Materials

Insulating body PPA GF, V-0 according to UL94
Contact spring Cu alloy, silver-plated
Cover PA GF, V-0 according to UL94

Mechanical data

Mating cycles 5000¹
Insertion force 3,92-29,4 N
Withdrawal force 3,92-29,4 N

¹ measured with a gauge plug

Electrical data (at T_{amb} 20 °C)

Contact resistance $\leq 30 \text{ m}\Omega$
Rated current 1 A
Rated voltage 12 V DC
Rated impulse voltage 500 V/60 s
Insulation resistance $\geq 100 \text{ M}\Omega$

Associated products

Counterparts
☞ 1532 02

*a printed circuit board layout, solder side view
*b solder pad

15

1503 20

Designation	Pole Number	PU (Pieces)	MDQ (Pieces)
1503 20 VP3	4	750	750