



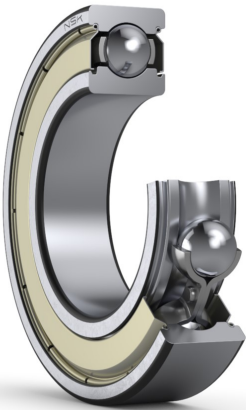
PRODUCT DATASHEET

Datasheet creation date: 2025/07/09 7:51 (UTC)



6805ZZ

Single-Row Deep Groove Ball Bearings



Boundary Dimensions

d	25	mm	Bore diameter
D	37	mm	Outside diameter
B	7	mm	Width
r (min.)	0.3	mm	Chamfer dimension

Basic Load Ratings

Cr	4950	N	Basic dynamic load rating
C0r	3150	N	Basic static load rating

Speeds

Grease	18000	min-1	Grease lubrication
--------	-------	-------	--------------------

Abutment and Fillet Dimensions

da (min.)	27	mm	Diameter of shaft abutment
da (max.)	27	mm	Diameter of shaft abutment
Da (max.)	35	mm	Diameter of housing abutment
ra (max.)	0.3	mm	Radius of shaft or housing fillet

Calculation factors

fo	16.1		Factor
----	------	--	--------

Additional information

z	16		Number of Balls
Dw	3.5	mm	Ball Diameter

Mass

Mass approx.	0.021	kg	Mass approx.
--------------	-------	----	--------------

