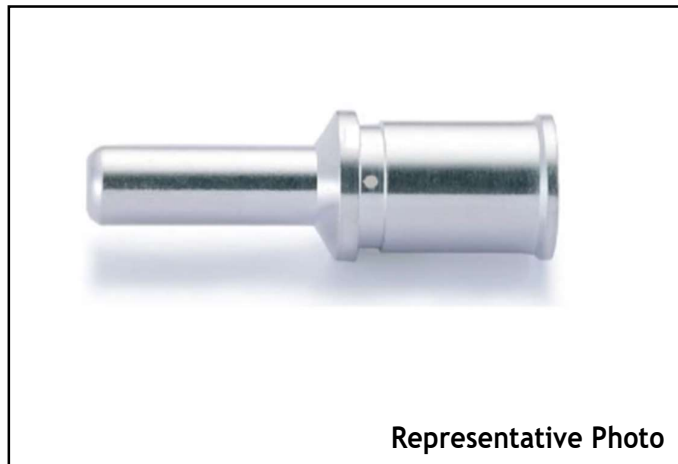


Features

- RS PRO 70 A male crimp contact.

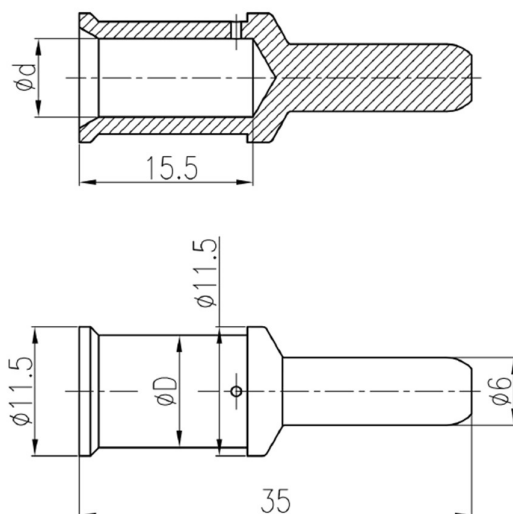
RS PRO Industrial Power Connectors

RS Stock No.: 0630936



Representative Photo

RS Professionally Approved Products bring to you professional quality parts across all product categories. Our product range has been tested by engineers and provides a comparable quality to the leading brands without paying a premium price.



Part Code	Wire Gauge		d	D	Stripping length	Weight (g)
	mm ²	AWG				
0630936	10	8	4.3	5.6	15.5	9

Technical Specification

Material	Copper alloy
Surface	Hard-silver plated
Rated current	70A
Contact resistance	□ 0.5mΩ
Wire gauge	6-16 mm ²
Mating cycles	□ 500
For stranded fine wire acc. to	IEC 60228-5