

Standard Range : A very simple offer !

■ PCB blocks

- In spacings of 3.5 - 3.81 - 5 - 5.08 with 2 and 3 poles



■ PCB Connectors

- Female plugs 5.08 from 2 to 12 poles
- Male sockets 5.08 from 2 to 12 poles



Standard Range : PCB blocks



- Screw clamps

- 4 series

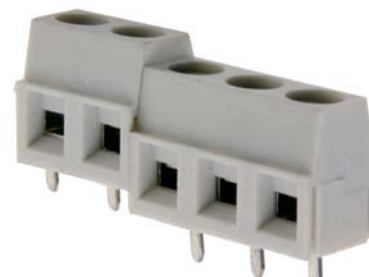
- L042 200 in spacing 3.5
- L043 200 in spacing 3.81
- L045 200 in spacing 5.08
- L055 200 in spacing 5.08

- 2 and 3 poles

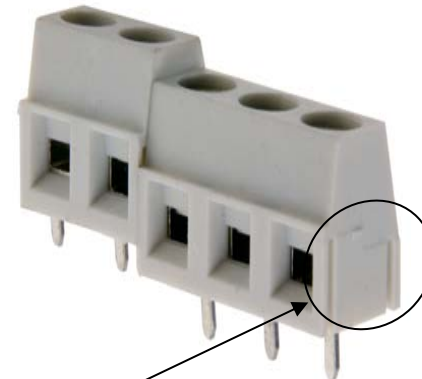
- Can be assembled by dovetails



L042 200



L045 200



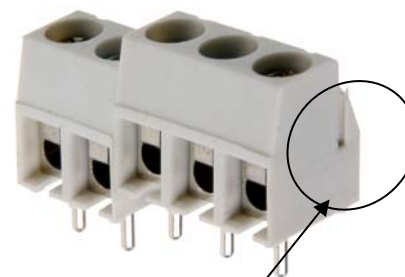
L055 200



Standard Range : PCB blocks



- Screw with tab
- 2 series
 - L034 200 in spacing 5.0
 - L074 200 in spacing 5.0
- 2 and 3 poles
- Can be assembled by dovetails



Standard Range : PCB Connectors

- Female plugs in spacing 5.08

- 3 Series

- L445 200

- L445 300

- L445 600

- 2 to 12 Poles

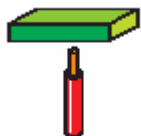
parallel to connection direction

perpendicular to connection direction

perpendicular to connection direction



L445 300: wire upper to connection direction



L445 600: wire down to connection direction



Standard Range : PCB Connectors

- Male socket in spacing 5.08

- 4 series

- L455 100 01

- L455 100 11

- L455 300 01

- L455 300 11

open side, vertical to PCB

close side, vertical to PCB

open side, horizontal to PCB

close side, horizontal to PCB

- 2 to 12 Poles



Standard Range : Benefits

- Simple offer
- Competitive prices
- Compatible with our main competitors' products
- Stocks adapted for high volume markets
- Comply with IEC 60947-7-1 and UL 1059
- Comply with RoHS Directive
- Unlossable screws
- Pins of sockets entirely tin plated
- "Click" while insertion of plug into socket



- Economical
- 100% compatible
- Durable development

