

## Features

- Rated currents up to 30A
- Screw Terminal
- The compact size can be applied to various situations.
- General purpose filtering performance

## RS PRO EMI Filters

RS Stock No.: 286-7242



RS PRO is the own brand of RS. The RS PRO Seal of Approval is your assurance of professional quality, a guarantee that every part is rigorously tested, inspected, and audited against demanding standards. Making RS PRO the Smart Choice for our customers.

## Product Description

*High performance single phase chassis mount EMI filter Applications:*

- *Electrical and electronic equipment*
- *Medical equipment*
- *Office automation equipment*
- *New energy equipment ,Communication equipment;*

## General Specifications

The compact size can be applied to various situations.

This filter is also available as one-stage filters in noisy environment.

There are a variety of parts and combinations to meet different customer's EMC tests.

Customized products according to customer's requirements.

## Electrical Specifications

*Size( Length\*Width\*Height) 92\*57\*44.5mm*

*Weight* 0.85kgs

*Mounting Hole Spacing* 104mm

## Mechanical Specifications

*Rated Voltage Max.* 115/250VAC

<i>Rated currents</i>	30A
<i>Operating frequency</i>	50/60Hz
<i>Hipot Rating</i>	Line to Ground 2250VDC Line to Line 500VDC
<i>Temperature range</i>	-25°C~+85°C
<i>Leakage current</i>	1.0mA/2.0mA
<i>Inductance</i>	L: 2x0.9mH ;
<i>Capacitance</i>	Cx: 0.47uF ; Cy:10000pF*2
<i>Resistance</i>	R:1M ohm

## Protection Category

*IP Rating* IP40

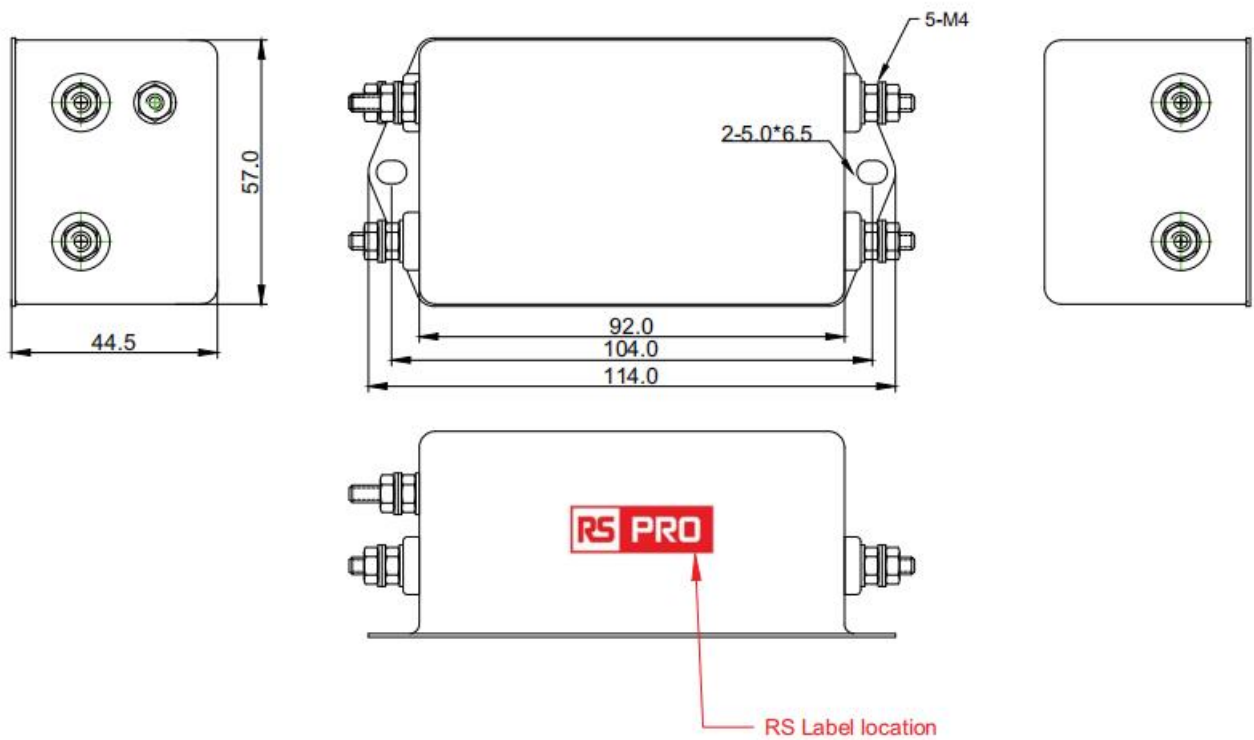
## Approvals

<i>Declarations</i>	TUV CQC CE UKCA REACH ROHS
<i>Safety Standard</i>	EN 60939-1:2010; EN 60939-2:2005 GB/T 15287; GB/T 15288-1994;

## Similar Products

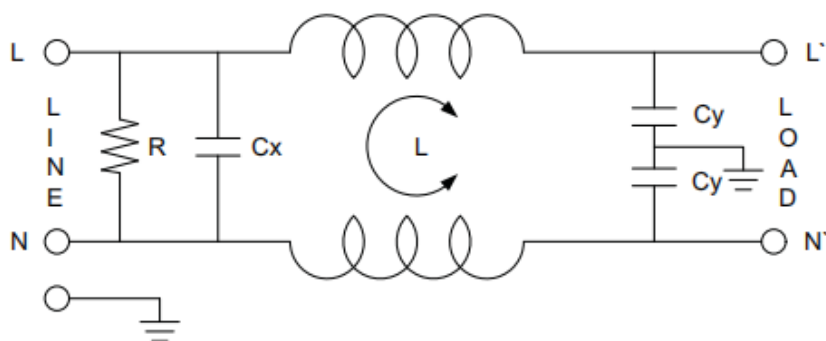
Stock No.	Brand	Phase Type	Mounting	Current	Dimension
237-8709	RS PRO	Single phase	Chassis mounting	30A	92*57*44.5mm

## Physical Dimensions (Unit:mm)



0 ~ 10	±0.3
10 ~ 100	±0.5
100 ~ 150	±0.8
150 ~ 200	±1.0

## Electrical Schematic



Insertion loss( IN 50ohm system according IEC/CISPR NO.17)

\_\_\_\_\_ Common mode      ----- Differential mode

