

1 channel temperature logger with internal sensor

°C



testo 175-T1

1 channel temperature logger with internal sensor, wall holder and calibration protocol

Part no. 0563 1754

Easy and highly affordable temperature monitoring

- During transport
- In refrigerated rooms
- In display cabinets
- In containers
- For monitoring rooms



Technical data

Parameter	Temperature (°C/°F)
Sensor	NTC (internal)
No. of channels	1 channel (internal)
Measuring range	-35 °C to +70 °C
Resolution	0.1 °C of -20 to +70 °C 0.3 °C in remaining range
Accuracy/System ±1 digit	±0.5 °C (-20 to +70 °C) ±1 °C (-35 to -20.1 °C)
Memory	7,800 readings
Application temp.	-35 °C to +70 °C
Storage temp.	-40 °C to +85 °C
Battery type	Lithium (1AA)
Weight	90 g
Protection class	IP 68

Ordering data/Accessories

ComSoft 3 - Basic Set, easy-to-use software with diagram and table function, interface for logger incl. desk-top holder

Part no. 0554 1759

testo 575 fast printer

Part no. 0554 1775

testo 580 data collector
incl. readout holder for logger

Part no. 0554 1778

Accessories and Calibration Certs./P. 14

testo 175-T2

2 channel temperature logger with internal sensor/external probe socket

°C



testo 175-T2

2 channel temperature logger with internal sensor and external probe socket, wall holder and calibration protocol

Part no. 0563 1755

Monitor product and air temperature simultaneously

- During transport
- In refrigerated rooms
- In containers
- During production



Technical data

Parameter	Temperature (°C/°F)
Sensor	NTC (internal + external)
No. of channels	2 channels (1int./1ext.)
Measuring range	-35 °C to +70 °C (intern.) -40 °C to +120 °C (extern.)
Resolution	0.1 °C of -20 to +70 °C 0.3 °C rem. range
Accuracy/System Internal: ±1 digit	±0.5 °C (-20 to +70 °C) ±1 °C (-35 to -20.1 °C)
Accuracy/Instr. External: ±1 digit	±0.3 °C (-25 to +70 °C) ±0.5 °C rem. range
Memory	16,000 readings
Application temp.	-35 °C to +70 °C
Storage temp.	-40 °C to +85 °C
Battery type	Lithium (1AA)
Weight	84 g
Protection class	IP 68

Ordering data/Accessories

ComSoft 3 - Basic Set, easy-to-use software with diagram and table function, interface for logger incl. desk-top holder

Part no. 0554 1759

testo 575 fast printer

Part no. 0554 1775

testo 580 data collector
incl. readout holder for logger

Part no. 0554 1778

Accessories and Calibration Certs./P. 14

testo 175-T3

2 channel temperature logger for external thermocouples



7

Technical data

Parameter	Temperature (°C/°F)
Sensor	T/C-Type K or T (external)
No. of channels	2 channels (external)
Measuring range	-50 °C to +1000 °C (Type K) -50 °C to +400 °C (Type T)
Resolution	0.1 °C
Accuracy/Instr. (without probes)	±0.5 °C (-50 to +70 °C) ±0.7% of reading (70.1 to +1000 °C)
±1 digit	
Memory	16,000 readings
Application temp.	0 °C to +70 °C
Storage temp.	-40 °C to +85 °C
Battery type	Lithium (1/2 AA)
Weight	90 g
Protection class	IP 54



°C

Ordering data/Accessories

ComSoft 3 - Basic Set, easy-to-use software with diagram and table function, interface for logger incl. desk-top holder

Part no. 0554 1759

testo 575 fast printer

Part no. 0554 1775

testo 580 data collector
incl. readout holder for logger

Part no. 0554 1778

Accessories and Calibration Certs./P. 14



Probes on page 15

Fast 2 channel temperature monitoring in

- Heating appliances
- Domestic housing
- Metal processing
- Production
- Technical laboratories

testo 175-T3

2 channel temperature logger for external thermocouples, wall holder and calibration protocol

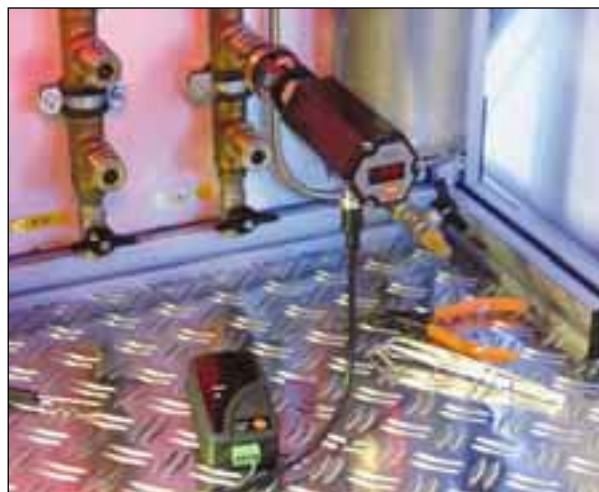
Part no. 0563 1756

testo 175-S1

1 channel current/voltage logger

Technical data

Parameter	Current/voltage
No. of channels	1 channel (external)
Measuring range	0 to 1 V / 0 to 10 V 0 to 20 mA / 4 to 20 mA
Resolution	1 mV (0 to 1 V) 10 mV (1 to 10 V) 0.01 mA (0 to 20 mA)
Accuracy/System ±1 digit	± 2 mV (0 to 1 V) ± 20 mV (1 to 10 V) ± 0.05 mA (0 to 20 mA)
Memory	16,000 readings
Probe	Built-in screwed contact socket
Application temp.	-10 °C to +50 °C
Storage temp.	-40 °C to +70 °C
Battery type	Lithium (1/2 AA)
Weight	80 g



mA/V

Ordering data/Accessories

ComSoft 3 - Basic Set, easy-to-use software with diagram and table function, interface for logger incl. desk-top holder

Part no. 0554 1759

testo 575 fast printer

Part no. 0554 1775

testo 580 data collector
incl. readout holder for logger

Part no. 0554 1778

Accessories and Calibration Certs./ P. 14



Easy current/voltage monitoring in

- Industrial processes
- Laboratories
- Control systems
- Development
- Production
- Transmitter outputs

testo 175-S1

1 channel current/voltage logger with external terminal screws, wall holder and calibration protocol

Part no. 0563 1759

testo 175-H1

2 channel humidity/temperature logger with internal sensors

°C

%RH



testo 175-H1

2 channel humidity/temperature logger with internal sensors, wall holder and calibration protocol

Part no. 0563 1757

Affordable monitoring of humidity/temperature values in

- Warehouses
- Domestic housing
- Museums
- Industrial processes
- Mechanical engineering



Technical data

Parameter	Humidity/Temperature
Sensor	Humidity sensor / NTC (internal)
No. of channels	2 channels (internal %RH; °C)
Measuring range	0 to 100 %RH -10 °C to +50 °C
Resolution	0.1 %RH / 0.1 °C
Accuracy/System ±1 digit	± 3 %RH ± 0.5 °C
Memory	3,700 readings
Application temp.	-10 °C to +50 °C
Storage temp.	-40 °C to +70 °C
Battery type	Lithium (1/2 AA)
Weight	80 g

Ordering data/Accessories

ComSoft 3 - Basic Set, easy-to-use software with diagram and table function, interface for logger incl. desk-top holder

Part no. 0554 1759

testo 575 fast printer

Part no. 0554 1775

testo 580 data collector incl. readout holder for logger

Part no. 0554 1778

Accessories and Calibration Certs./P. 14

testo 175-H2

2 channel humidity/temperature logger with internal sensors

°C

%RH



testo 175-H2

2 channel humidity/temperature logger with internal sensors, wall holder and calibration protocol

Part no. 0563 1758

Efficient monitoring of humidity/temperature values in

- Industrial processes
- Domestic housing
- Offices
- Warehouses
- Museums



Technical data

Parameter	Humidity/ Temperature
Sensor	Humidity sensor / NTC (internal)
No. of channels	2 channels (internal %RH; °C)
Measuring range	0 to 100 %RH -20 °C to +70 °C
Resolution	0.1 %RH / 0.1 °C
Accuracy/System ±1 digit	±3 %RH ±0.5 °C
Memory	16,000 readings
Application temp.	-20 °C to +70 °C
Storage temp.	-40 °C to +85 °C
Battery type	Lithium (1/2 AA)
Weight	85 g

Ordering data/Accessories

ComSoft 3 - Basic Set, easy-to-use software with diagram and table function, interface for logger incl. desk-top holder

Part no. 0554 1759

testo 575 fast printer

Part no. 0554 1775

testo 580 data collector incl. readout holder for logger

Part no. 0554 1778

Accessories and Calibration Certs./P. 14

testo 177-T1

1 channel temperature logger w/ int. sensor for long-term monitoring



9

Technical data

Parameter	Temperature (°C/°F)
Sensor	NTC (internal)
No. of channels	1 channel (internal)
Measuring range	-40 °C to +70 °C
Resolution	0.1 °C
Accuracy/System ±1 digit	±0.4 °C; -25 to +70 °C ±0.8 °C; -40 to -25.1 °C
Memory	48,000 readings
Application temp.	-40 °C to +70 °C
Storage temp.	-40 °C to +85 °C
Battery life	Lithium (1AA)
Weight	111 g
Protection class	IP 68



°C

Ordering data/Accessories

ComSoft 3 - Basic Set, easy-to-use software with diagram and table function, interface for logger incl. desk-top holder

Part no. 0554 1774

testo 575 fast printer

Part no. 0554 1775

testo 580 data collector incl. readout holder for logger

Part no. 0554 1778

Accessories and Calibration Certs./P. 14

Long-term temperature monitoring in refrigeration and deep-freeze

- Freezer rooms
- Warehouses
- Refrigerated rooms
- Transport
- Containers



testo 177-T1

1 channel temperature logger with internal sensor, wall holder and calibration protocol

Part no. 0563 1771

testo 177-T2

1 channel temperature logger with internal sensor for long-term monitoring

Technical data

Parameter	Temperature (°C/°F)
Sensor	NTC (internal)
No. of channels	1 channel (internal)
Measuring range	-40 °C to +70 °C
Resolution	0.1 °C
Accuracy/System ±1 digit	±0.4 °C; -25 to +70 °C ±0.8 °C; -40 to -25.1 °C
Memory	48,000 readings
Application temp.	-40 °C to +70 °C
Storage temp.	-40 °C to +85 °C
Battery type	Lithium (1AA)
Weight	122 g
Protection class	IP 68



°C

Ordering data/Accessories

ComSoft 3 - Basic Set, easy-to-use software with diagram and table function, interface for logger incl. desk-top holder

Part no. 0554 1774

testo 575 fast printer

Part no. 0554 1775

testo 580 data collector incl. readout holder for logger

Part no. 0554 1778

Accessories and Calibration Certs./P. 14

Long-term temperature monitoring with temperature display for

- Refrigerated rooms
- Warehouses
- Domestic housing
- Containers
- Transport



testo 177-T2

1 channel temperature logger with internal sensor, wall holder and calibration protocol

Part no. 0563 1772

3 channel temperature logger with event logging

°C



testo 177-T3

3 channel temperature logger with internal sensor, 2 probe sockets, door contact, wall holder and calibration protocol

Part no. 0563 1773

Multi-channel temperature logger with display for monitoring transport

- Transport logs
- Refrigerated room logs
- Warehouses
- Containers
- Blood plasma monitoring



Technical data

Parameter	Temperature (°C/°F)
Sensor	NTC (int. + 2 external) Event logging e.g. door contact
No. of channels	4 channels (1 int.; 2 ext.;) + 1 door contact (external)
Measuring range	-40 °C to +70 °C (internal) -40 °C to +120 °C (extern)
Resolution	0.1 °C
Accuracy/System	±0.4 °C; -25 to +70 °C ±0.8 °C; -40 to -25.1 °C
Accuracy/Instr.	±0.2 °C; -25 to +70 °C
External: ±1 digit	±0.4 °C rem. range
Memory	48,000 readings
Application temp.	-40 °C to +70 °C
Storage temp.	-40 °C to +85 °C
Battery type	Lithium (1AA)
Weight	127 g
Protection class	IP 67

Ordering data/Accessories

ComSoft 3 - Basic Set, easy-to-use software with diagram and table function, interface for logger incl. desk-top holder

Part no. 0554 1774

testo 575 fast printer

Part no. 0554 1775

testo 580 data collector
incl. readout holder for logger

Part no. 0554 1778

Accessories and Calibration Certs./P. 14

Probes on page 15

testo 177-T4

4 channel temperature logger for external thermocouples

°C



testo 177-T4

4 channel temperature logger for external thermocouples, wall holder and calibration protocol

Part no. 0563 1774

Fast measurement of high temperatures in

- Hardening bays
- Mechanical engineering
- Industrial processes
- Heating installation
- Laboratories



Technical data

Parameters	Temperature (°C/°F)
Sensors	T/C-Type K or T (4 x external)
No. of channels	4 channels (external)
Measuring range	Type K: -200 °C to +1000 °C Type T: -200 °C to +400 °C
Resolution	0.1 °C
Accuracy/Instr.	±0.3 °C; -100 to +70 °C
±1 digit	±0.5% of reading; +70 to +1000 °C
Memory	48,000 readings
Application temp.	0 °C to +70 °C
Storage temp.	-40 °C to +85 °C
Battery type	Lithium (1AA)
Weight	129 g
Protection class	IP 43

Ordering data/Accessories

ComSoft 3 - Basic Set, easy-to-use software with diagram and table function, interface for logger incl. desk-top holder

Part no. 0554 1774

testo 575 fast printer

Part no. 0554 1775

testo 580 data collector
incl. readout holder for logger

Part no. 0554 1778

Accessories and Calibration Certs./P. 14

Probes on page 15

4 channel humidity/temperature logger with internal sensors and external probe socket

Technical data

Parameters	Humidity/Temperature/ Dew point
Sensors	Humidity sensor/ NTC (internal) NTC (external)
No. of channels	4 channels (3 x int. %RH; °C, °C td) (1 x external °C)
Measuring range	0...100 %RH -20 to +70 °C (internal) -40 to +70 °C td -40 to +120 °C (external)
Resolution	0.1%RH/0.1 °C/0.1 °C td
Accuracy/System	± 2%RH Internal: ±1 digit ± 0.5 °C;
Accuracy/Instr.	± 0.2 °C; -25 to +70 °C
External: ±1 digit	± 0.4 °C; rem. range
Memory	48,000 readings
Application temp.	-20 °C to +70 °C
Storage temp.	-40 °C to +85 °C
Battery type	Lithium (1AA)
Weight	130 g
Protection class	IP 54

Ordering data/Accessories

ComSoft 3 - Basic Set, easy-to-use software with diagram and table function, interface for logger incl. desk-top holder

Part no. 0554 1774

testo 575 fast printer

Part no. 0554 1775

testo 580 data collector
incl. readout holder for logger

Part no. 0554 1778

Accessories and Calibration Certs./P. 14

Probes on page 15



Advantages of the testo 177-H1 data logger

- External humidity sensor resulting in fast response time
- Extensive range of temperature probes
- Measure dew point difference via connectable surface temperature probe
- Control and adjustment options thanks to adjustment set
- Various protective caps available for dirty, highly humid air or corrosive gases

Advantages of the testo humidity sensor

The humidity sensor, developed by Testo, has been tried and tested throughout the world. The use of the sensor in the humidity data logger results in the following excellent properties:

- Efficiency
- Long-term stability
- Temperature resistance
- Robustness

Ideal for air humidity and temperature monitoring

- In domestic buildings (See photo opposite)
- In greenhouses
- In clean rooms
- In warehouses
- During production
- In computer rooms
- In museums

Example of application in domestic building



Building defect or incorrect ventilation?

Moisture on ceilings and walls can be caused by faults in the building. However, in most cases it is a sign of incorrect ventilation. Long-term measurement with a data logger will clarify the situation. The data logger calculates the difference based on the wall surface temperature and the dew point temperature of the ambient air. If it is established that the room was aired on a regular basis and the walls are still moist (dew point temperature is higher than the wall surface temperature), then there must be a defect in the building or insulation is insufficient. (Send for more information on Page 16.)

testo 177-H1

4 channel humidity/temperature logger with int. sensors and additional external probe socket, wall holder and calibration protocol

Part no. 0563 1775

°C

%RH

td

testo 575 – Fast printer and logger control in one

Prints and analyses data on-site without a PC



To be able to quickly print out on-site is an important requirement of many users, which has now been fulfilled by Testo. The result is the testo 575 fast printer which even restarts the logger without having to connect it to a PC.

testo 575

testo 575 fast printer, infrared thermal line printer with graph function, incl. 1 roll of thermal paper and batteries

Part no. 0554 1775

testo 575 - more than just a fast printer/Fast and easy documentation without PC

Print functions

- Fast-action print mechanism prints up to 6 lines per second (up to 40 readings/s)
- Easy to insert paper
- Prints tables at the touch of a button
- Prints graphs at the touch of a button
- Brief information or complete memory can be printed as required
- A time mark can be set in the logger at the



- touch of a button, the printer recognises which part is to be printed
- Printer for all Testo measuring instruments with print function
- Your language can be set
- Self-adhesive paper can also be used

Technical data

Printer	Infrared thermal line printer with graph function
Contrast	Can be adjusted
Paper width	56 mm
Roll diameter	Up to 35 mm
Paper	Standard paper and two layer-adhesive
Number of characters/line	24
Graph resolution	203 dpi
Operating temp.	-5 to +50 °C (for 5 min at -30 °C)
Storage temp.	-30 to +70 °C
Power	6x round cell 1AA
Battery life	Up to 40,000 print lines
Battery change	By user
Casing	ABS (black), with "Soft-Protect" inserts

Control functions

- Stops testo 175/177 loggers
- Restarts logger with saved parameters (reprogramming)
- Both buttons can be blocked by PC software

testo 580 – Compact data collector

Collects and transports data to PC



The pocket-size testo 580 - data collector transfers data from loggers on-site for PC download

testo 580

testo 580 data collector incl. readout holders for testo 175/177 data loggers

Part no. 0554 1778

testo 580 - Data collector

- Downloads the complete memory of a testo 175/177 at the touch of a button
- Displays all status information
- Can transfer up to 25 full testo 175 loggers or 10 full testo 177 loggers
- Downloads the collected data to PC via ComSoft 3 Software.



Control function

- Stops loggers
- Reprograms logger
- Both control functions can be blocked via PC

Technical data

Memory capacity	1MB (ap. 1,000,000 values)
Read out time in logger	Approx. 400 readings/s
Read out time/PC	Approx. 1.500 readings/s
Logger interface	IR transfer, bidirectional
PC interface	RS 232 (Sub_D socket)
Operating temp.	-30 to +70 °C;
Storage temp.	-40 to +85 °C
On/Off switch	Off: AutoOFF after 1 min

Functions:

Display	Memory occupied/Logger
	Memory occupied/testo 580
	Battery life: Logger
	Battery life: testo 580
	Data transfer in progress
	Data transfer ok or defective
	Wraparound/Display
Other:	Data secure even if battery is spent
Power	3x micro AAA cells
Casing	ABS (black)

Fast filing with ComSoft 3 - Professional

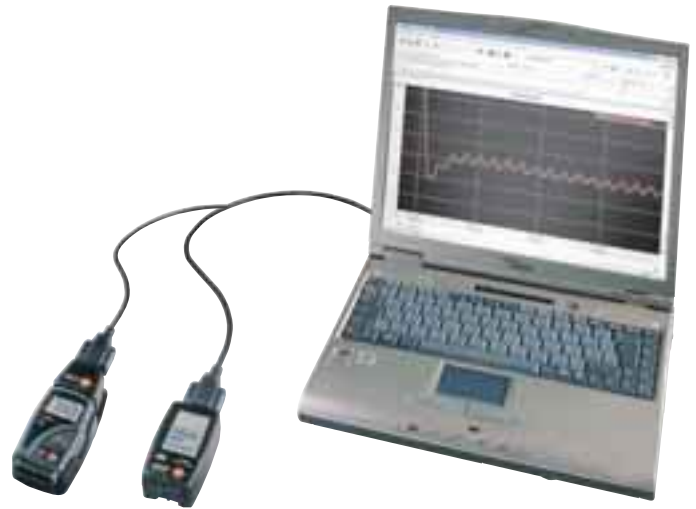
Fast transfer and easy analysis

Once the data logger is programmed and read out, data can be analysed and saved using the Windows compatible ComSoft 3 software. The software is available in 2 versions: Basic and Professional

ComSoft 3 - Basic: Easy operation, convenient analysis

The Basic version has all the functions needed to monitor, analyse, save and print data. The data loggers are programmed and read out using the instrument drivers available. The limit values to be monitored can be defined as required; short titles, text fields and channel names ensure clear location if several loggers are in use. Once read out, the data can be shown in table or graph form and then analysed. The crosshair function helps you to find specific readings in a large file. The course of the line is scanned with the crosshair and number, date, time and reading are displayed.

The e-mail address of the person destined to receive the data can be input when programming so that the data can be passed onto the locally installed e-mail program by simply clicking on "Send..." when the data is being read out. The saved e-mail address is entered in the address box.



Additional functions:

- Axes can be scaled as required
- Frequently used scales can be saved for future use
- Min/max and mean calculation in tables
- Printout as table or graph on all printers compatible with Windows
- Data export to other applications via clipboard
- Automatic search for instrument driver during initial operation (Autodetect)

ComSoft 3 - Professional: Convenient data filing included

The Professional version has all the functions of the Basic version but with additional options (e.g. digit field, bar display, analogue instrument, xy plot) and a convenient data filing function. Data can be saved in separate files so that, for example, several data loggers from different locations can be organised in a tree structure. This is particularly recommended for instruments which can manage many measurement protocols, e.g. the testo 580 data collector. The instrument driver in this instrument is set up in such a way that the directory structure of the Professional software is supported. The result is clear and comprehensible data handling.

Additional functions:

- Additional display options such as digit field, bar display, analogue instrument and xy plot
- Adaptation of menu and range of functions
- Input of mathematical functions with calculation on a new measurement channel
- Compensation functions 0 (mean) to 7th degree
- Selection of different print heads for printing tables and graphs
- Developer ToolBox with functions to integrate the instrument driver in non-Testo software

testo 175 and testo 177 data loggers

The testo 175 and testo 177 data loggers are read out and newly programmed at the serial interface of the PC. Thanks to the fast data transfer speed of 500 values/second, even full loggers are read out in no time. The interface is non-contact (infrared) so there is no need for awkward cables. The actual readout unit can be snapped onto attached loggers and then read out on-site.

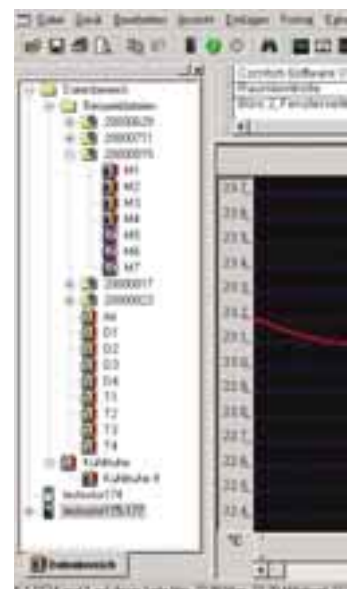
Convenient, easy-to-use software for Windows 95, 98, NT, ME, XP

- **ComSoft 3 - Basic:**
Reads out, displays, prints and programs all testo 175 and 177 loggers; with e-mail function
- **ComSoft 3 - Professional:**
Saves data in a tree structure for easy and convenient data management.

ComSoft 3 - Basic	
Set ComSoft 3 - Basic for testo 175	
Easy software with diagram and table display, interface incl. desk-top holder	
Part no.	0554 1759
Set ComSoft 3 - Basic for testo 177	
Part no.	0554 1774



ComSoft 3 - Professional	
ComSoft 3 - Professional with data management incl. database, analysis and graph function, data analysis, trend curve (w/o interface)	
Part no.	0554 0830



Interface	
Interface for testo 175 /177 incl. desk-top holders for testo 175/177, PC connection cable (for ComSoft 3 - Professional, please order)	
Part no.	0554 1757