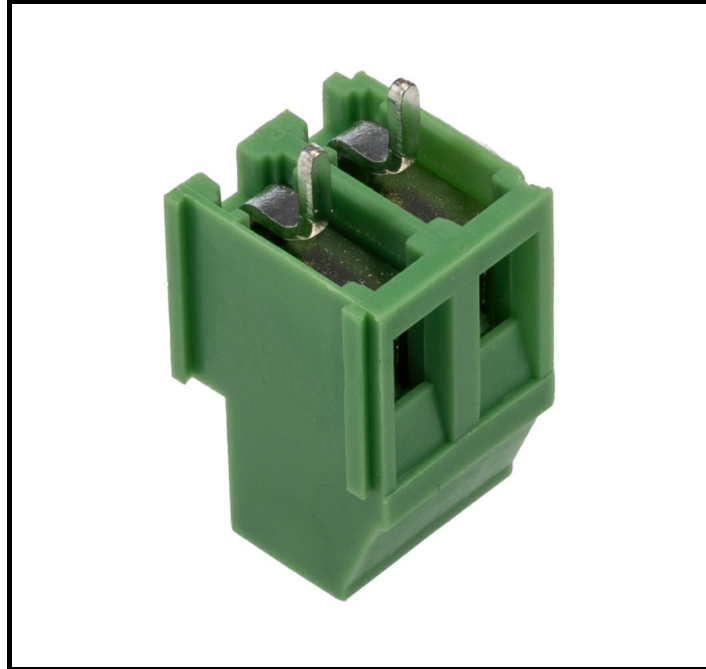


FEATURES

- **Board-to-Board and Board-to-Wire Compatibility:** Offers flexibility in connection types for diverse applications
- **20 A Current Rating:** Supports high current applications, ensuring efficient power distribution
- **Tin over Nickel Plating:** Provides excellent corrosion resistance and reliable conductivity
- **Operating Temperature Range -40 °C to 105 °C:** Suitable for use in extreme environmental conditions
- **Through Hole Mount Type:** Ensures strong mechanical stability on the PCB
- **Shrouded Design:** Protects contacts and enhances connection reliability
- **Screw Termination:** Facilitates secure and easy installation
- **Compliance with ANSI-ESD S20.20:2021, CE, REACH, RoHS, UL, VDE:** Meets international safety and quality standards

RS PRO PCB Header, 5 mm Pitch, 2 Contacts, 20 A

RS Stock No: 631-134



RS Professionally Approved Products bring to you professional quality parts across all product categories. Our product range has been tested by engineers and provides a comparable quality to the leading brands without paying a premium price.

Product Description

This RS PRO PCB Header is designed for reliable electrical connections in various industrial applications. With a robust construction, it supports both board-to-board and board-to-wire connections, making it versatile for different setups. Its shrouded design ensures secure mating and protection against environmental factors.

General Specifications

Connector System	Board-to-Board, Board-to-Wire
Contact Gender	Male
Contact Material	Brass, Steel
Contact Plating	Tin over Nickel
Mount Type	Through Hole
Number of Contacts	2
Number of Rows	1
Orientation	Straight
Product Type	PCB Header
Shrouded/Unshrouded	Shrouded
Tail Pin Length	4 mm

Electrical Specifications

Current	20 A
Voltage	300 V

Mechanical Specifications

Housing Material	PA66
Pitch	5 mm
Termination Type	Screw

Operation Environment Specifications

Maximum Operating Temperature	105 °C
Minimum Operating Temperature	-40 °C

Approvals

Standards/Approvals

ANSI-ESD S20.20:2021, CE, REACH, RoHS, UL, VDE

