

NOTES: (C)

1. DRAWING TO BE INTERPRETED IN ACCORDANCE WITH THE CURRENT REVISION OF ASME Y14.5M.
2. THIS PART/PRODUCT IS TO BE MANUFACTURED WITH THE APPLICABLE REGULATIONS OF EC DIRECTIVES 2002/95/EC AND 2002/96/EC, RESTRICTION OF THE USE OF HAZARDOUS SUBSTANCES IN ELECTRICAL AND ELECTRONIC EQUIPMENT (RoHS) AND WASTE ELECTRICAL AND ELECTRONIC EQUIPMENT (WEEE).

CHARACTERISTICS

ELECTRICAL:

RATINGS:	SEA LEVEL		50,000 FT.
LOAD	28 VDC	115 VAC	28 VDC
RESISTIVE	10 AMPS	10 AMPS	-----
INDUCTIVE	5 AMPS	5 AMPS	5 AMPS
LAMP	3 AMPS	3 AMPS	-----
DWV	1050 VRMS		400 VRMS

ELECTRICAL LIFE: 100,000 CYCLES AT FULL LOAD.

MECHANICAL:

TOTAL TRAVEL: .085±.015  
OVER TRAVEL: .012 MIN. ■  
RESET TRAVEL: .012 MIN. ■  
MOVEMENT DIFFERENTIAL: .015 MIN.  
OPERATING FORCE: 4 LBS. ±1 LB.  
RESET FORCE: 1 LB. MIN.  
MECHANICAL LIFE: 1,000,000 CYCLES

PHYSICAL:

BUTTON: THERMOPLASTIC (SEE CHART)  
CASE: BLACK ANODIZED ALUMINUM ALLOY  
TEMPERATURE RANGE: -55°c TO +85°C  
ENCLOSURE DESIGN: WATERTIGHT PER IP68S, 1 METER

MARKING:

P3-90318- (SEE CHART)  
DATE CODE (YYWW) &  
TERM. IDENT.

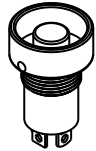
MOUNTING HARDWARE:

NUT, LOCKWASHER & PANEL SEAL

(C) P3-90318-

BUTTON COLOR

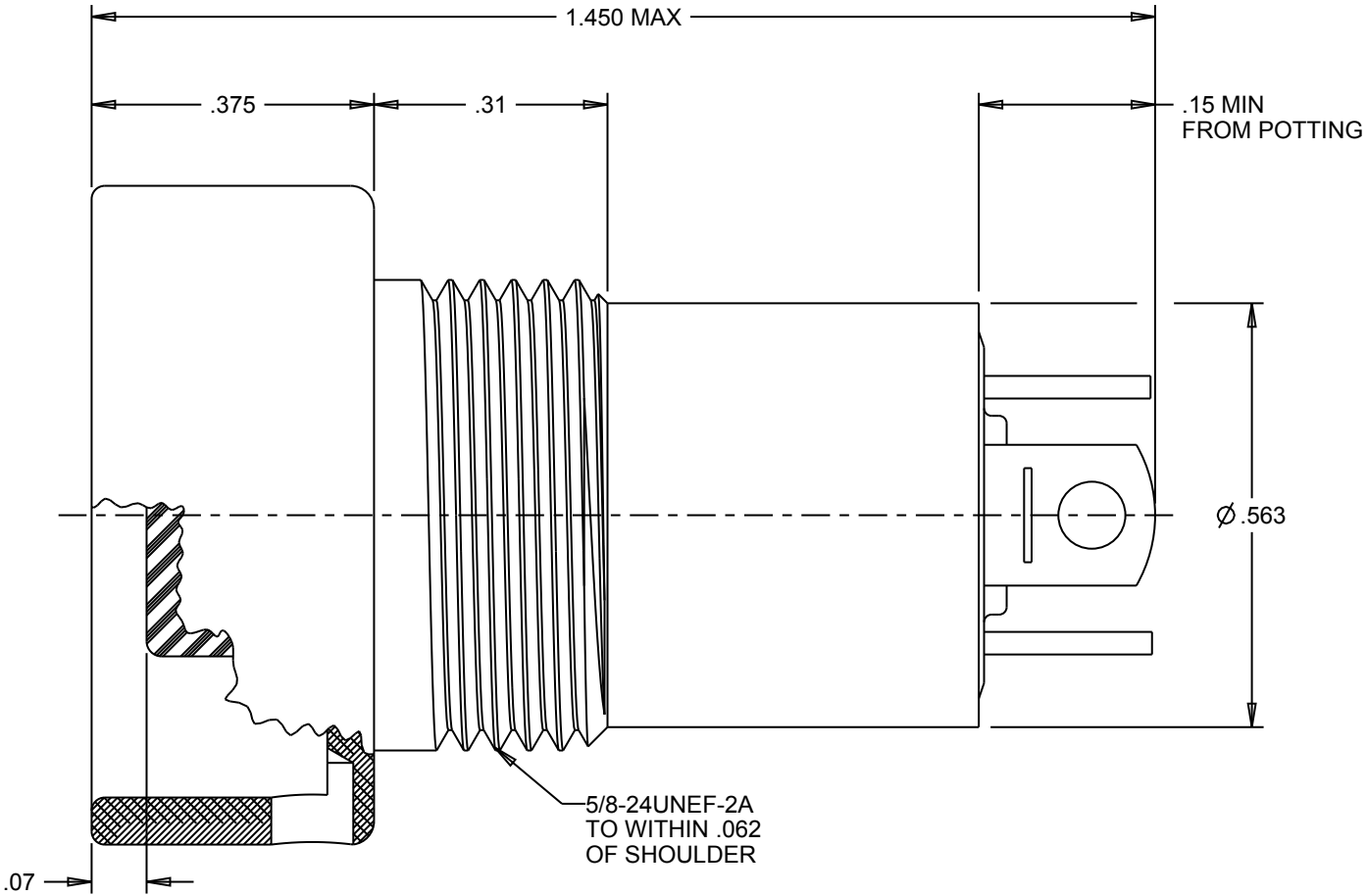
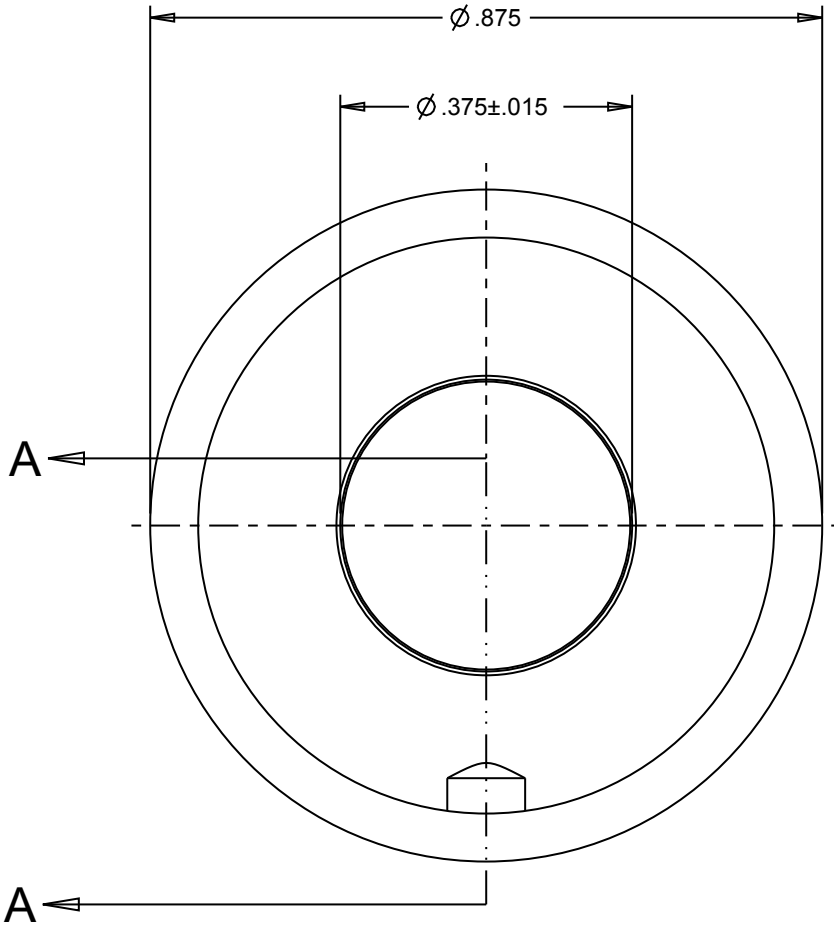
1. RED  
2. BLACK  
3. ORANGE  
4. YELLOW  
5. GREEN  
6. BLUE  
7. VIOLET  
8. GRAY  
9. WHITE



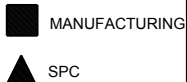
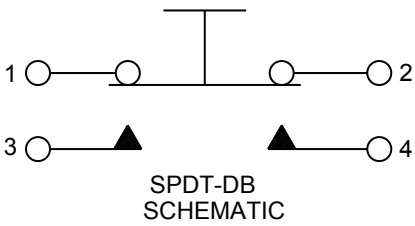
SCALE 1:2

P3-90318

REV	OCN #	DATE	APR
A	025278	09 DEC 04	REO
B	049051	26 MAY 09	REO
C	051302	11 SEP 09	REO



SECTION A-A



UNLESS OTHERWISE SPECIFIED:  
DIMENSIONS ARE IN INCHES.  
TOLERANCES:  
.XX ±.03  
.XXX ±.010  
ANGLES ±2 °  
DO NOT SCALE

**OTTO.**  
CARPENTERSVILLE, ILLINOIS USA

THIS DOCUMENT IS THE CONFIDENTIAL PROPERTY OF OTTO ENGINEERING, INC.. IT IS NOT TO BE USED IN ANY WAY DETRIMENTAL TO THE INTERESTS OF OTTO ENGINEERING, INC..

DESCRIPTION

P3, PUSHBUTTON SWITCH

DRWN. RDN	SIZE	FSCM NO	DRAWING NO.	REV.
CHKD. REO	B	21649	P3-90318	C
APPD. SPM				
WT.	THIRD ANGLE PROJECTION	Scale 4:1	Sheet 1 OF 1	