

Customer Information Sheet

DRAWING No: M40-620XXXX

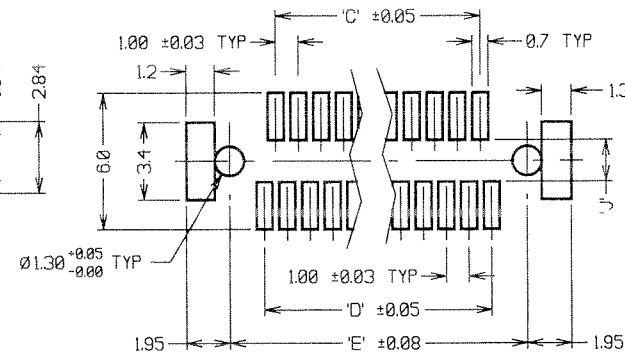
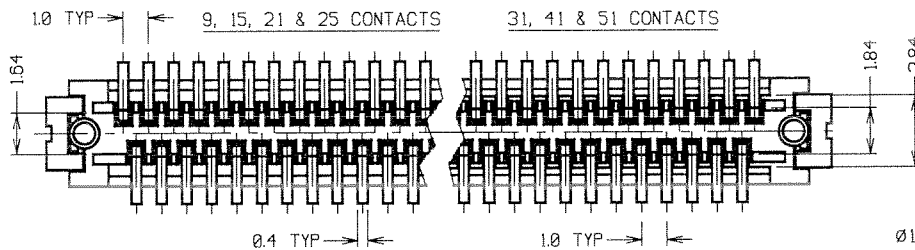
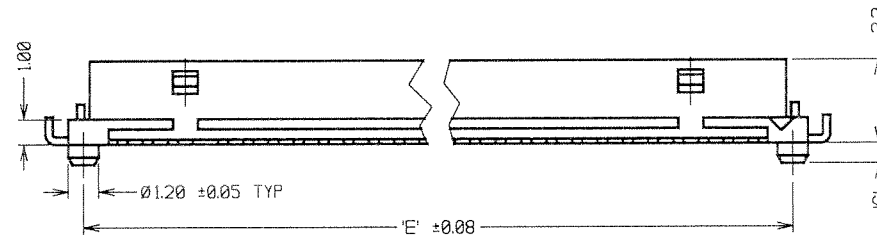
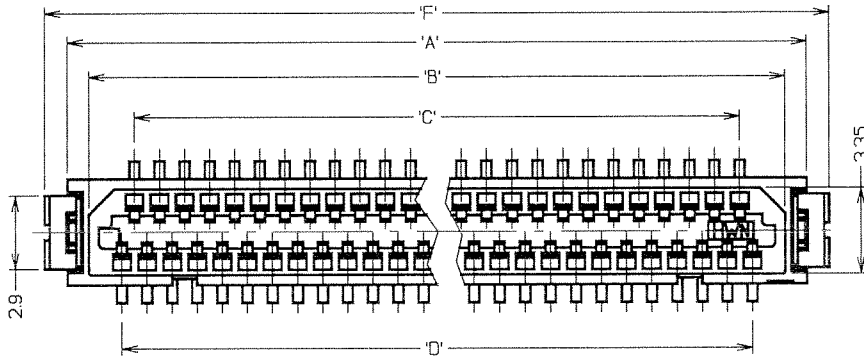
SHEET 2 OF 2 IF IN DOUBT - ASK

(C)

NOT TO SCALE

THIRD ANGLE PROJECTION

ALL DIMENSIONS IN mm



PART No.	No. OF CONTACTS	'A'	'B'	'C'	'D'	'E'	'F'	'G'	'J'
M40-62009XX	9	8.3	6.5	3.0	4.0	7.1	10.1	1.0	1.84 ^{+0.05} / _{-0.05}
M40-62015XX	15	11.3	9.5	6.0	7.0	10.1	13.1	1.0	1.84 ^{+0.05} / _{-0.05}
M40-62021XX	21	14.3	12.5	9.0	10.0	13.1	16.1	1.0	1.84 ^{+0.05} / _{-0.05}
M40-62025XX	25	16.3	14.5	11.0	12.0	15.1	18.1	1.0	1.84 ^{+0.05} / _{-0.05}
M40-62031XX	31	19.3	17.5	14.0	15.0	18.1	21.1	0.8	3.0 ^{+0.05} / _{-0.05}
M40-62041XX	41	24.3	22.5	19.0	20.0	23.1	26.1	0.8	3.0 ^{+0.05} / _{-0.05}
M40-62051XX	51	29.3	27.5	24.0	25.0	28.1	31.1	0.8	3.0 ^{+0.05} / _{-0.05}

SPECIFICATIONS:

MATERIAL:

MOULDING = PA UL94V-0 (NATURAL)

CONTACTS = PHOSPHOR BRONZE

RETAINER = BRASS

FINISH:

CONTACTS = 1-2μ 100% REFLOW TIN

RETAINER = 2-6μ 100% MATTE TIN OVER 1.27μ MIN NICKEL

ELECTRICAL:

CURRENT RATING = 0.5 AMPS

VOLTAGE RATING = 100V AC

DIELECTRIC STRENGTH = 250V AC FOR 1 MINUTE

INSULATION RESISTANCE = 500 MEGOHMS MIN (100V DC)

CONTACT RESISTANCE = 50 MILLIOHMS MAX (0.1A DC)

MECHANICAL:

DURABILITY = 30 CYCLES

ENVIRONMENTAL:

TEMPERATURE RANGE = -55°C TO +85°C

PACKING:

TUBE

ORDER CODE:

M40-620XX46

No. OF CONTACTS
9, 15, 21, 25, 31,
41, 51

FINISH:
46 = 100% TIN

NOTES:

1. MATES WITH M40-600XXXX TO GIVE 4.3mm BOARD-TO-BOARD HEIGHT.

2. ALL TOLERANCES ±0.30 UNLESS OTHERWISE STATED.

HARWIN

HARWIN USA
TEL: 603 893 5376
FAX: 603 893 5396
mfs@harwin.com

HARWIN Europe (UK)
TEL: 023 9231 4545
FAX: 023 9231 4590
mfs@harwin.co.uk

HARWIN Asia
TEL: +65 6 779 4909
FAX: +65 6 779 3868
mfs@harwin.com.sg

THIS DRAWING AND ANY INFORMATION OR DESCRIPTIVE MATTER SET OUT HEREON ARE CONFIDENTIAL AND COPYRIGHT PROPERTY OF THE HARWIN GROUP AND MUST NOT BE DISCLOSED, LOANED, COPIED OR USED FOR MANUFACTURING, TENDERING OR FOR ANY OTHER PURPOSE WITHOUT THEIR WRITTEN PERMISSION.

TOLERANCES
X: ± 0.1mm
X.X: ± 0.25mm
X.XX: ± 0.10mm
X.XXX: ± 0.01mm
ANGLES = ± 5°
UNLESS STATED

MATERIAL:
SEE ABOVE

FINISH: SEE ABOVE

S/AREA: mm²

TITLE:
1.00mm PITCH SMT SOCKET CONNECTOR

DRAWING NUMBER:
M40-620XXXX

SHT
2 OF 2

RA	9	07.06.07	9776
NAME	ISS.	DATE	C/NOTE
APPROVED:			
CHECKED:			
DRAWN:	W. J. BOURNE		
CUSTOMER REF.:			
ASSEMBLY DRG:			