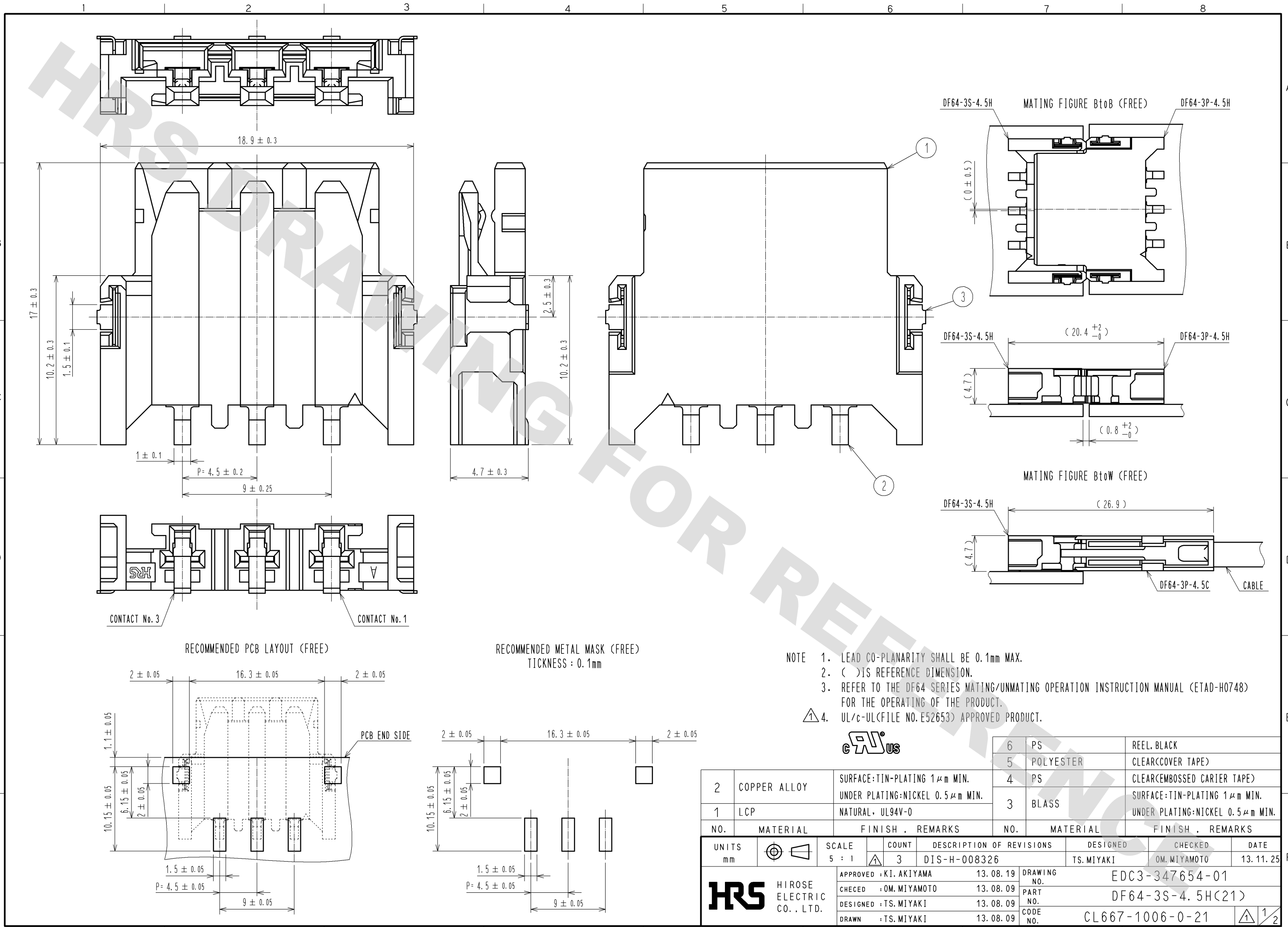
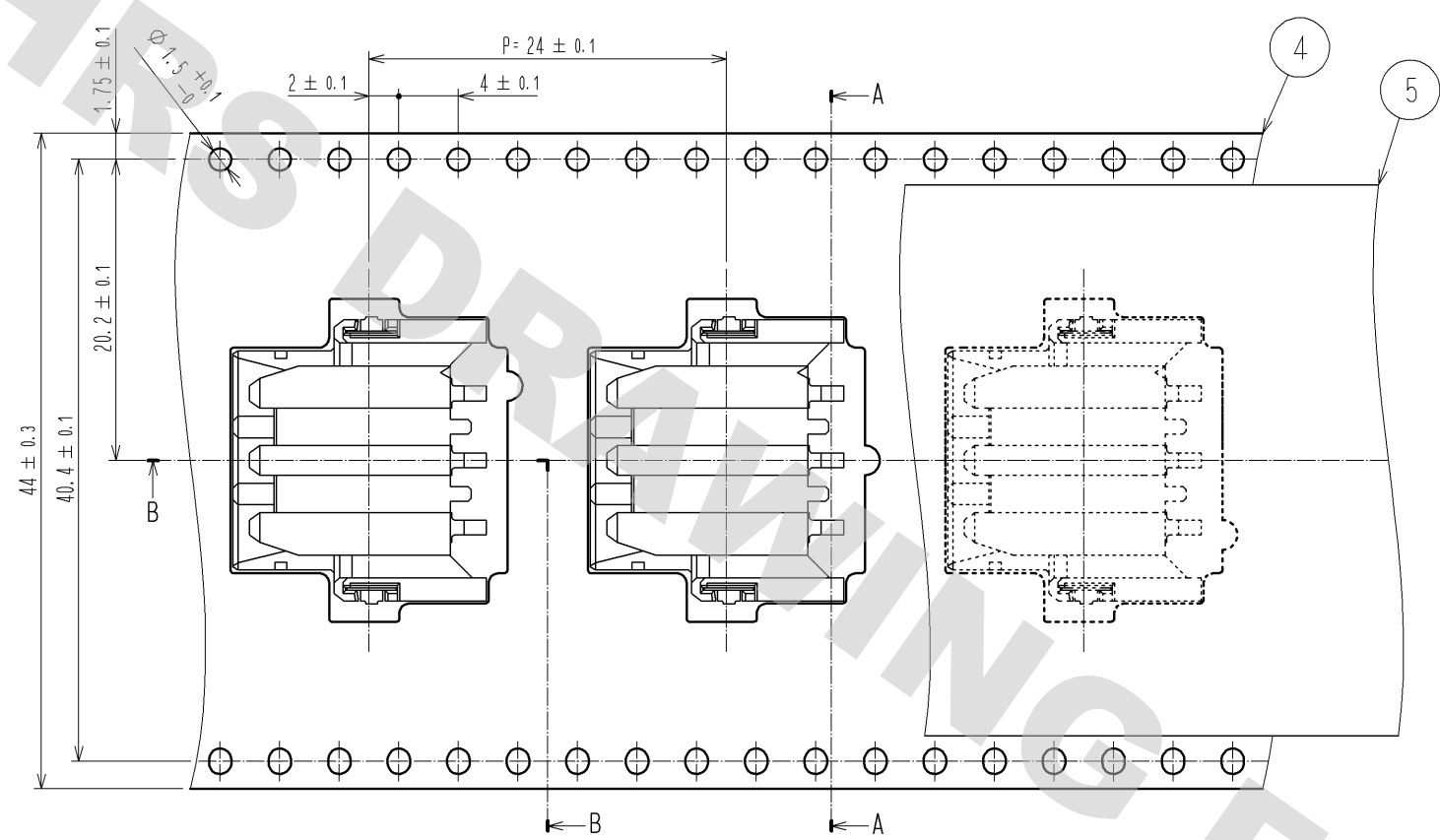


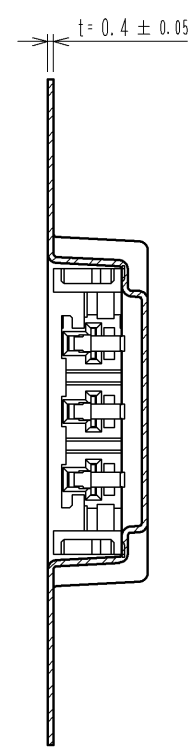
DRAWING FOR REFERENCE: This is subject to change without notice
12/05/2013



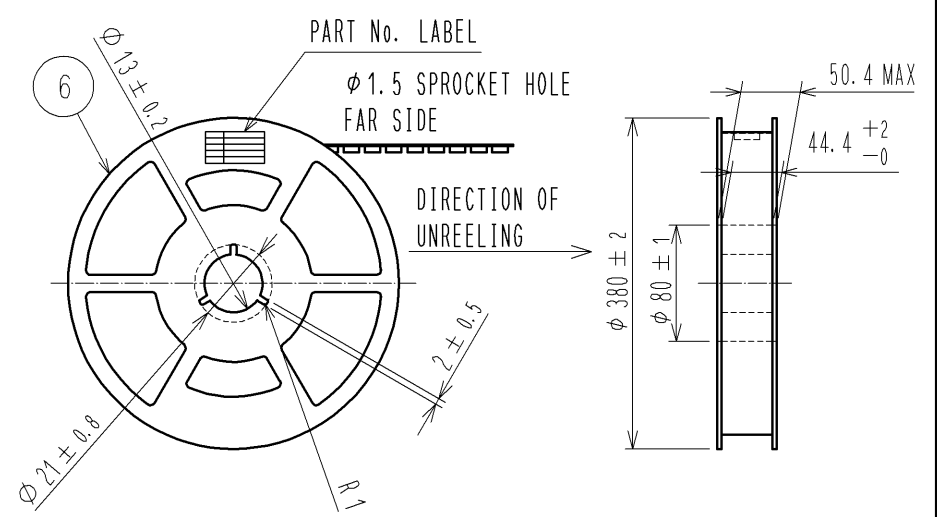
DRAWING FOR PACKING (2:1)



A-A(2:1)



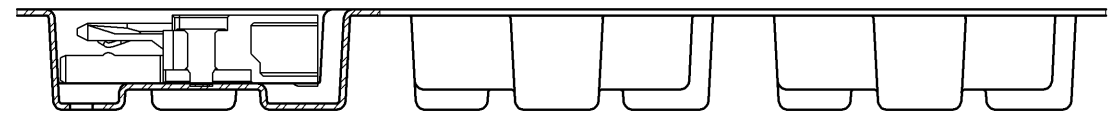
STYLE AND DIMENSION OF REEL(FREE)



DETAIL OF PART No. LABEL

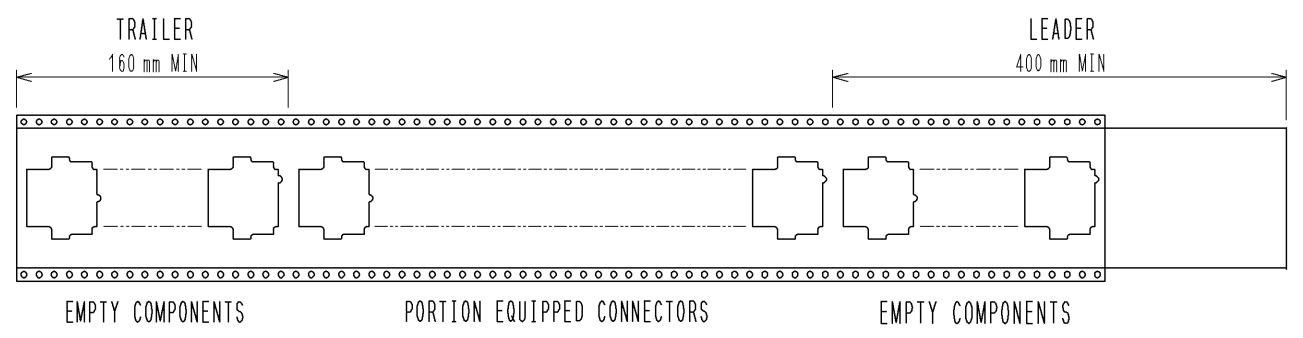
生産月日	年 月 日
図 番	CL667-1006-0-21
品 名	DF64-3S-4.5H(21)
納入数量	500 K0
納入者	ヒロセ電機(株)

B-B(2:1)

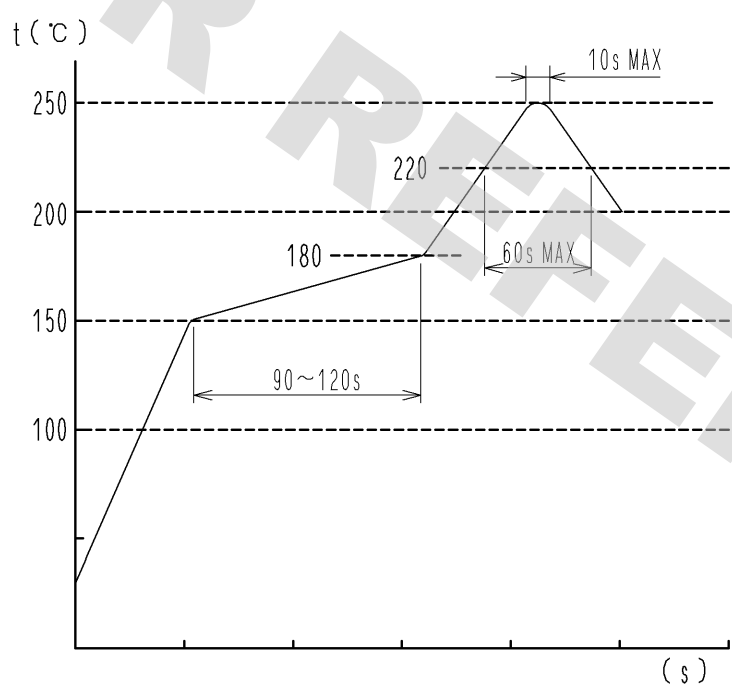


DIRECTION OF REELING →

①⑥ TAPING(FREE)



REFLOW TEMPERATURE PROFILE USING LEAD-FREE SOLDER PASTE (REFERENCE)



NUMBER OF REFLOW CYCLES 2 CYCLES MAX
 THE TEMPERATURE IS MEASURED IN THE TERMINAL LEAD PART.
 ADDITIONAL FACTORS, SUCH AS SOLDER PASTE TYPE,
 PCB SIZE AND OTHER MOUNTED COMPONENTS COULD AFFECT
 THE PROFILE.
 THEREFOR, A THOROUGH EVALUATION OF MOUNTING CONDITION IS
 REQUIRED PRIOR TO PRODUCTION.
 TEMPERATURE IS MEASURED AT CONTACT LEAD.

- ① NOTE 5. 1REEL:500 CONNECTORS.
- ⑥ REEL TO JIS C 0806.(PACKAGING OF COMPONENTS FOR AUTOMATION HANDLING)
- 7. () IS REFERENCE DIMENSION.

HRS	DRAWING NO.	EDC3-347654-01
	PART NO.	DF64-3S-4.5H(21)
	CODE NO.	CL667-1006-0-21
		①/2

DRAWING FOR REFERENCE: This is subject to change without notice 12/05/2013