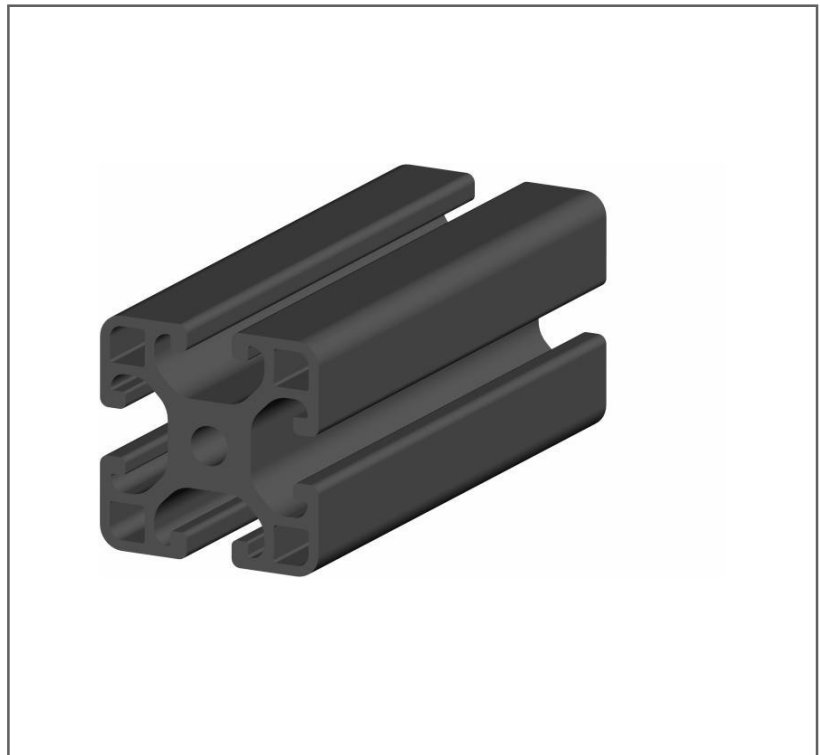


Features

- Light-weight aluminium alloy
- Suitable for cut to length application
- Structural element type:
 - Strut Profile
- Compatible with support and connector accessories

RS PRO Strut Profile, 50x50 E, Black, 10mm Groove, 2400mm Length

RS Stock No.: 0335147



RS PRO is the own brand of RS. The RS PRO Seal of Approval is your assurance of professional quality, a guarantee that every part is rigorously tested, inspected, and audited against demanding standards. Making RS PRO the Smart Choice for our customers.

Product Description

RS PRO aluminum profiles offer a modular solution for building structures, frameworks and workstations.
A large number of components and connectors allow you to choose from a wide range of applications.
The modular system includes different profile types and lengths of 1m, 2m and 3m with different cross-sections and groove-sizes in grid dimensions from 20 mm to 90 mm.

General Specifications

Structural Element Type	Strut Profile / Aluminium Profile
Number of Grooves	4
Material	Aluminium anodized
Applications	Construction, Workstations, Industrial Equipment, Automotive Manufacturing

Mechanical Specifications

Moment of Inertia I _x (cm ⁴)	21,06
Moment of Inertia I _y (cm ⁴)	21,06
Section Modulus W _x (cm ³)	8,42
Section Modulus W _y (cm ³)	8,42
Mass (kg/m)	2,36

