



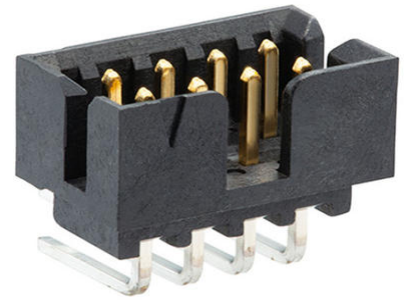
Part Number : [878334420](#)

Product Description : 2.00mm Pitch, Milli-Grid PCB Header, Dual Row, Right-Angle, Through Hole, 44 Circuits, 0.38µm Gold (Au) Plating, without PCB Locator, with Locking Windows, Center Polarization Slot, Tube

Series Number : 87833

Status : Active

Product Category : PCB Headers and Receptacles



Documents & Resources

Drawings

[878334420 sd.pdf](#)

[PK-87831-001-001.pdf](#)

[PK-87831-002-001.pdf](#)

[PK-87831-300-001.pdf](#)

3D Models and Design Files

[STEP AP242](#)

[SOLIDWORKS](#)

[Creo](#)

[Symbol and Footprint \(Multi-Format\)](#)


Specifications

[503940001-AS-000.pdf](#)

[PS-87831-027-001.pdf](#)

Product Environment Compliance

Compliance

GADSL/IMDS	Compliant with Exemption 44; 34; 33
China RoHS	 per SJ/T 11365-2006
EU ELV	Not Relevant
Low-Halogen Status	Not Low-Halogen per IEC

	61249-2-21
REACH SVHC	Not Contained per D(2025)4165-DC (25 June 2025)
EU RoHS	Compliant per EU 2015/863

Compliance Statements

- EU RoHS
- REACH SVHC
- Low-Halogen

Industry Documents

- IPC 1752A Class C
- IPC 1752A Class D
- Molex Product Compliance Declaration
- IEC-62474
- chemSHERPA (xml)

Substances of Interest

- PFAS

EU RoHS Certificate of Compliance

Additional Product Compliance Information

Part Details

General

Status	Active
Category	PCB Headers and Receptacles
Series	87833
Description	2.00mm Pitch, Milli-Grid PCB Header, Dual Row, Right-Angle, Through Hole, 44 Circuits, 0.38µm Gold (Au) Plating, without PCB Locator, with Locking Windows, Center Polarization Slot, Tube
Application	Signal, Wire-to-Board
Comments	Contact Molex for application in automotive industry
Component Type	PCB Header
Product Name	Milli-Grid
UPC	822348273393

Agency

CSA	LR19980
UL	E29179

Electrical

Current - Maximum per Contact	2.0A
Voltage - Maximum	125V

Physical

Breakaway	No
Circuits (Loaded)	44
Circuits (maximum)	44
Color - Resin	Black
Durability (mating cycles max)	100
First Mate / Last Break	No
Flammability	94V-0
Glow-Wire Capable	No
Guide to Mating Part	No
Keying to Mating Part	None
Lock to Mating Part	Yes
Material - Metal	Phosphor Bronze
Material - Plating Mating	Gold
Material - Plating Termination	Tin
Material - Resin	Nylon
Net Weight	2.247/g
Number of Rows	2
Orientation	Right Angle
Packaging Type	Tube
PCB Locator	No
PCB Retention	None
PCB Thickness - Recommended	1.60mm
PC Tail Length	2.16mm
Pitch - Mating Interface	2.00mm
Pitch - Termination Interface	2.00mm
Plating min - Mating	0.381µm
Plating min - Termination	1.905µm

Polarized to PCB	No
Shrouded	Fully
Stackable	No
Temperature Range - Operating	-55° to +105°C
Termination Interface Style	Through Hole

Solder Process Data

Max-Duration	11
Lead-Free Process Capability	SMC&WAVE
Max-Cycle	1
Max-Temp	265

Mates With / Use With

Mates with Part(s)

Description	Part Number
Milli-Grid Dual Row Receptacle Housings	<u>51110</u>
Milli-Grid Vertical Through Hole PCB Receptacles	<u>78787</u>
Milli-Grid Top Entry Surface Mount PCB Receptacles	<u>78788</u>
Milli-Grid Vertical Through Hole PCB Receptacles	<u>79107</u>
Milli-Grid Vertical Through Hole PCB Receptacles	<u>79108</u>
Milli-Grid Top/Bottom Entry Surface Mount PCB Receptacles	<u>79109</u>
Milli-Grid Dual Row Cable-to-Board Receptacles	<u>87568</u>