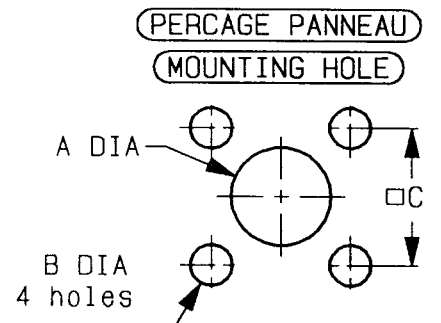
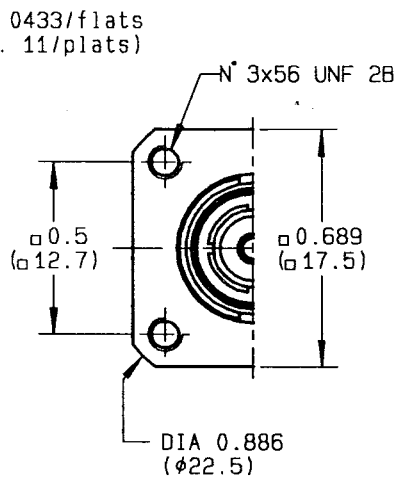
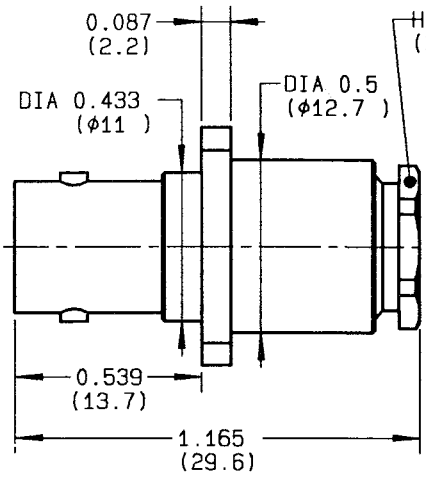


STRAIGHT FLANGE MOUNT CABLE JACK-CLAMP TYPE
CABLE 2.6/50+75

Series : BNC

1 / 2



	MM		INCH	
	maxi	mini	maxi	mini
A	11.3	11.2	0.445	0.44
Ab	13	12.9	0.512	0.51
B	2.7	2.6	0.106	0.102
C	12.75	12.65	0.502	0.498

CABLES : RG174 RG179

CHARACTERISTICS

NOMINAL IMPEDANCE	50	Ω
FREQUENCY RANGE	0-4	GHz
TEMPERATURE RATING	-65/+165	°c
VSWR	TBD + 0 x f(GHz)	Maxi
RF INSERTION LOSS	TBD √f(GHz)	dB Maxi
VOLTAGE RATING	500	Vrms Max
DIELECTRIC WITHSTANDING VOLTAGE	1500	Vrms min
INSULATION RESISTANCE	5000	MΩ min
HERMETIC SEAL	-	cc/s
		Atm.cm3/s
LEAKAGE (pressurized only)	-	psi
		MPa
WEIGHT	0	Oz
		g

STANDARDISATION		
CABLE RETENTION	5.7	N
	110	N
CENTER CONTACT RETENTION		
Axial force - mating end	6.11	lb min
	27.2	N
Axial force - opposite end	5.11	lb min
	27.2	N
Torque (Min)	0	Inch.oz
	NA	cm.N
RECOMMENDED TORQUES		
Mating	C	inch.lb
	NA	cm.N
Panel nut	0	inch.lb
	NA	cm.N
Clamp nut	39.82	inch.lb
	450	cm.N

CONSTRUCTION

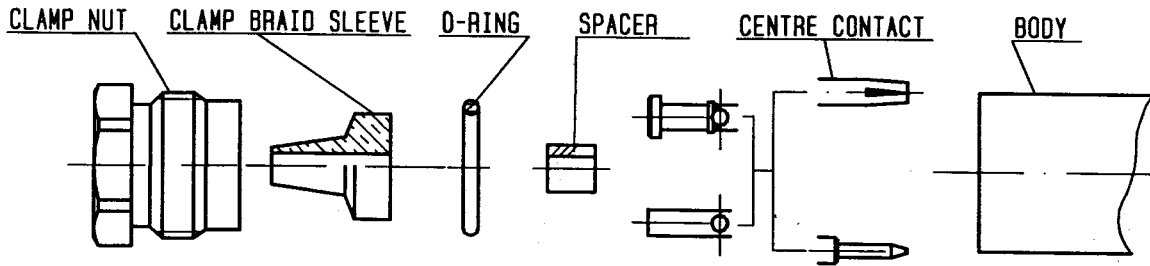
CONNECTOR PARTS	MATERIALS	FINISH
BODY	BRASS	NICKEL
OUTER CONTACT	BRASS	NICKEL
CENTER CONTACT	BERYLLIUM COPPER	GOLD
INSULATOR	PTFE	-
-	-	-
-	-	-
-	-	-
-	-	-
-	-	-

ISSUE	REVISION No	DESCRIPTION	BY	DATE
-	-	-	-	-
-	-	-	-	-
-	-	-	-	-
-	-	-	-	-

Initiated on 04/02/92
Approval by BAFFERT

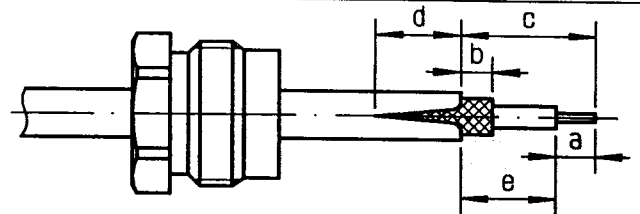
The information given here is subject to change without notice. Design changes may be made in order to improve the product.





①

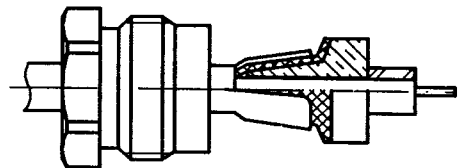
Slide clamp nut onto cable .
Strip the cable .
Cut the jacket (2 slots)
apart if necessary .



Stripping	a	b	c	d	e
inch	0.157	0.079	0.354	0.079	0.197
mm	4	2	9	2	5

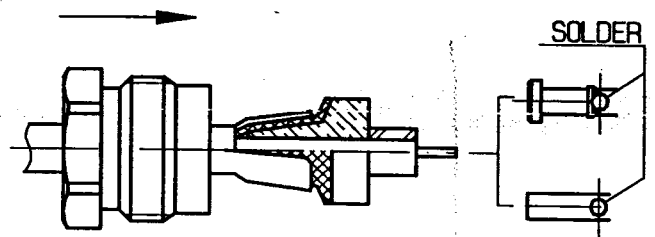
②

Slide the clamp braid sleeve between
cable dielectric and braid .
Cut the braid flush with the clamp
braid sleeve .
Slide the spacer .



③

Solder the cable inner conductor into
centre contact .
Slide the back nut over the clamp
assembly .



④

Mount the gasket into the connector .
Screw sub-assembly into the connector
body .
(recommended coupling torque 39.82 in.lb)

