

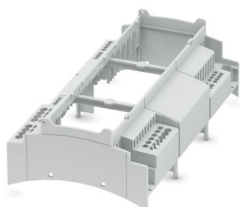
BC 161,6 OT 2P2K1P0C1D1K KMGY - Upper housing part



1335979

<https://www.phoenixcontact.com/in/products/1335979>

Please be informed that the data shown in this PDF document is generated from our online catalog. Please find the complete data in the user documentation. Our general terms of use for downloads are valid.



DIN rail housing for use in distribution boards in accordance with DIN 43880, modular upper housing part, SPT-THR, width: 161.6 mm, height: 89.7 mm, depth: 54.85 mm, color: light gray (similar RAL 7035)

Your advantages

- SPT-THR-harmonized housings enable fast device development and optimal protection for the electronics
- Individual online configuration for diverse applications in building automation
- Standard-compliant housing and installation dimensions for use in distribution boards
- Easily find the right item for you: Use our intuitive Online Configurator

Commercial data

Item number	1335979
Packing unit	10 pc
Minimum order quantity	10 pc
Product key	ACHBAB
GTIN	4063151636838
Weight per piece (including packing)	70.82 g
Weight per piece (excluding packing)	46.7 g
Country of origin	PL

BC 161,6 OT 2P2K1P0C1D1K KMGY - Upper housing part



1335979

<https://www.phoenixcontact.com/in/products/1335979>

Technical data

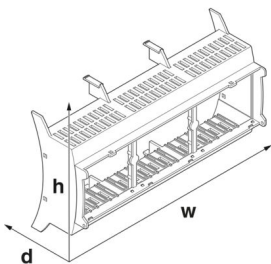
Notes

Assembly note	Please observe the application note in the download area.
---------------	---

Product properties

Product type	Upper housing part
Housing type	DIN rail housing for use in distribution boards in accordance with DIN 43880
Housing series	BC
Product family	BC 161,6..
Number of positions	58
Max. number of positions	44 (pitch: 3.81 mm) 14 (pitch: 5 mm)
Type	modular upper housing part, SPT-THR
Ventilation openings present	yes

Dimensions

Dimensional drawing	
Width	161.6 mm
Height	89.7 mm
Depth	54.85 mm
Horizontal pitch	9 Div.

PCB design

PCB thickness	1.4 mm ... 1.8 mm
---------------	-------------------

Material specifications

Color (Housing)	light gray (RAL 7035)
Flammability rating according to UL 94	V0
Housing material	PC
Surface characteristics	untreated

Environmental and real-life conditions

Vibration test

Specification	IEC 60068-2-6:2007-12
Frequency	10 - 150 - 10 Hz

BC 161,6 OT 2P2K1P0C1D1K KMGY - Upper housing part



1335979

<https://www.phoenixcontact.com/in/products/1335979>

Sweep speed	1 octave/min
Amplitude	0.15 mm (10 Hz ... 58.1 Hz)
Acceleration	2g (58.1 Hz ... 150 Hz)
Test duration per axis	2.5 h
Test directions	X-, Y- and Z-axis

Glow-wire test

Specification	IEC 60695-2-11:2014-02
Temperature	850 °C
Time of exposure	30 s

Mechanical strength / tumbling barrel

Specification	IEC 60068-2-31:2008-05
Height of fall	50 cm
Frequency	50

Shocks

Specification	IEC 60068-2-27:2008-02
Pulse shape	Half-sine
Acceleration	15g
Shock duration	11 ms
Number of shocks per direction	3
Test directions	X-, Y- and Z-axis (pos. and neg.)

Degree of protection (IP code)

Specification	IEC 60529:1989-11 + AMD 1:1999-11 + AMD 2:2013-08
---------------	---

Ambient conditions

Max. IP code to attain	IP20
Ambient temperature (operation)	-40 °C ... 105 °C (depending on power dissipation)
Ambient temperature (storage/transport)	-40 °C ... 70 °C
Ambient temperature (assembly)	-5 °C ... 100 °C
Relative humidity (storage/transport)	95 %

PCB data

Number of PCB holders	18
Type of PCB mount	Latching
Thickness of the PCB	1.4 mm ... 1.8 mm

Mounting

Mounting type	Snap in
---------------	---------

Packaging specifications

Type of packaging	packed in cardboard
Outer packaging type	Carton

BC 161,6 OT 2P2K1P0C1D1K KMGY - Upper housing part



1335979

<https://www.phoenixcontact.com/in/products/1335979>

Drawings

Dimensional drawing



Schematic figure for illustrating the item dimensions. The figure is not of the desired product. For further details, refer to the product drawings in the "Downloads" tab.

BC 161,6 OT 2P2K1P0C1D1K KMGY - Upper housing part



1335979

<https://www.phoenixcontact.com/in/products/1335979>

Approvals

To download certificates, visit the product detail page: <https://www.phoenixcontact.com/in/products/1335979>



UL Recognized

Approval ID: E240868

BC 161,6 OT 2P2K1P0C1D1K KMGY - Upper housing part



1335979

<https://www.phoenixcontact.com/in/products/1335979>

Classifications

ECLASS

ECLASS-11.0	27182702
ECLASS-13.0	27190603

ETIM

ETIM 9.0	EC002779
----------	----------

BC 161,6 OT 2P2K1P0C1D1K KMGY - Upper housing part



1335979

<https://www.phoenixcontact.com/in/products/1335979>

Environmental product compliance

EU RoHS	
Fulfills EU RoHS substance requirements	Yes, No exemptions
China RoHS	
Environment friendly use period (EFUP)	EFUP-E
	No hazardous substances above the limits
EU REACH SVHC	
REACH candidate substance (CAS No.)	No substance above 0.1 wt%

BC 161,6 OT 2P2K1P0C1D1K KMGY - Upper housing part



1335979

<https://www.phoenixcontact.com/in/products/1335979>

Mandatory accessories

SPT-THR 2,5/ 6-V-5,0 P20 R44 - PCB terminal block

1135338

<https://www.phoenixcontact.com/in/products/1135338>



Printed circuit board terminal, nominal current: 32 A, rated voltage (III/2): 400 V, nominal cross section: 4 mm², number of potentials: 6, number of rows: 1, number of positions per row: 6, product range: SPT 2,5/..-V-THR, pitch: 5 mm, connection method: Push-in spring connection, mounting: THR soldering / wave soldering, conductor/PCB connection direction: 0 °, color: black, Pin layout: Linear pinning, Solder pin [P]: 2 mm, number of solder pins per potential: 2, type of packaging: 44 mm wide tape

SPT-THR 2,5/ 6-V-5,0 P26 - PCB terminal block

1135350

<https://www.phoenixcontact.com/in/products/1135350>



Printed circuit board terminal, nominal current: 32 A, rated voltage (III/2): 400 V, nominal cross section: 4 mm², number of potentials: 6, number of rows: 1, number of positions per row: 6, product range: SPT 2,5/..-V-THR, pitch: 5 mm, connection method: Push-in spring connection, mounting: THR soldering / wave soldering, conductor/PCB connection direction: 0 °, color: black, Pin layout: Linear pinning, Solder pin [P]: 2.6 mm, number of solder pins per potential: 2, type of packaging: packed in cardboard

BC 161,6 OT 2P2K1P0C1D1K KMGY - Upper housing part



1335979

<https://www.phoenixcontact.com/in/products/1335979>

PST 1,0/2-5,75 P20 THR R32 - Pin strip

1353228

<https://www.phoenixcontact.com/in/products/1353228>



Pin strip, color: black, number of potentials: 2, number of positions: 2, number of connections: 2, product range: PST 1,0/..-V, pin layout: Linear pinning, type of packaging: 32 mm wide tape

HS-LC-V-T-D2,1X3,7S-10,6 - Fiber optic

1346167

<https://www.phoenixcontact.com/in/products/1346167>



Single light guide, passive, rigid, number of displays: 1, (1 row, 1 column), length: 11.3 mm

BC 161,6 OT 2P2K1P0C1D1K KMGY - Upper housing part



1335979

<https://www.phoenixcontact.com/in/products/1335979>

BC F SPT 2,5/4 KMGY - Filler plug

1340861

<https://www.phoenixcontact.com/in/products/1340861>

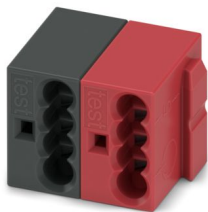


DIN rail housing for use in distribution boards in accordance with DIN 43880, Filler plug for unassembled clamping range of SPT-THR 2,5, width: 19.9 mm, height: 10.06 mm, depth: 3.17 mm, color: light gray (similar RAL 7035)

PTS 0,5/ 2-PH-5,75 BKRD KNX - PCB connector

1574300

<https://www.phoenixcontact.com/in/products/1574300>



PCB connector, nominal cross section: 0.5 mm², color: multicolored, nominal current: 6 A, rated voltage (III/2): 320 V, contact surface: Sn, contact connection type: Socket, number of rows: 1, number of positions: 2, product range: PTS 0,5/-PH, pitch: 5.75 mm, connection method: Push-in spring connection, conductor/PCB connection direction: 0 °, plug-in system: COMBICON PST 1,0, locking: without, mounting method: without, type of packaging: packed in cardboard

BC 161,6 OT 2P2K1P0C1D1K KMGY - Upper housing part



1335979

<https://www.phoenixcontact.com/in/products/1335979>

SPT-THR 1,5/ 4-V-3,81 P26 - PCB terminal block

1822448

<https://www.phoenixcontact.com/in/products/1822448>



Printed circuit board terminal, nominal current: 17.5 A, rated voltage (III/2): 160 V, nominal cross section: 1.5 mm², number of potentials: 4, number of rows: 1, number of positions per row: 4, product range: SPT 1,5/..-V-THR, pitch: 3.81 mm, connection method: Push-in spring connection, mounting: THR soldering / wave soldering, conductor/PCB connection direction: 90 °, color: black, Pin layout: Linear pinning, Solder pin [P]: 2.6 mm, number of solder pins per potential: 2, type of packaging: packed in cardboard. Suitable for CAT5

SPT-THR 2,5/ 4-V-5,0 P20 R44 - PCB terminal block

1135335

<https://www.phoenixcontact.com/in/products/1135335>



Printed circuit board terminal, nominal current: 32 A, rated voltage (III/2): 400 V, nominal cross section: 4 mm², number of potentials: 4, number of rows: 1, number of positions per row: 4, product range: SPT 2,5/..-V-THR, pitch: 5 mm, connection method: Push-in spring connection, mounting: THR soldering / wave soldering, conductor/PCB connection direction: 0 °, color: black, Pin layout: Linear pinning, Solder pin [P]: 2 mm, number of solder pins per potential: 2, type of packaging: 44 mm wide tape

BC 161,6 OT 2P2K1P0C1D1K KMGY - Upper housing part



1335979

<https://www.phoenixcontact.com/in/products/1335979>

SPT-THR 2,5/ 4-V-5,0 P26 - PCB terminal block

1135348

<https://www.phoenixcontact.com/in/products/1135348>

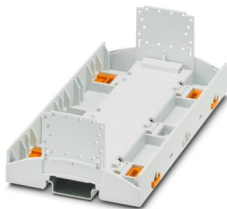


Printed circuit board terminal, nominal current: 32 A, rated voltage (III/2): 400 V, nominal cross section: 4 mm², number of potentials: 4, number of rows: 1, number of positions per row: 4, product range: SPT 2,5/..-V-THR, pitch: 5 mm, connection method: Push-in spring connection, mounting: THR soldering / wave soldering, conductor/PCB connection direction: 0 °, color: black, Pin layout: Linear pinning, Solder pin [P]: 2.6 mm, number of solder pins per potential: 2, type of packaging: packed in cardboard

BC 161,6 UT HBUS KMGY - Mounting base housing

1227345

<https://www.phoenixcontact.com/in/products/1227345>



DIN rail housing for use in distribution boards in accordance with DIN 43880, Lower housing part with base latch, width: 161.6 mm, height: 89.7 mm, depth: 48.9 mm, color: light gray (similar RAL 7035), cross connection: DIN rail connector (optional), number of positions cross connector: 16

BC 161,6 OT 2P2K1P0C1D1K KMGY - Upper housing part



1335979

<https://www.phoenixcontact.com/in/products/1335979>

BC 161,6 UT HBUS BK - Mounting base housing

2278500

<https://www.phoenixcontact.com/in/products/2278500>



DIN rail housing for use in distribution boards in accordance with DIN 43880, Lower housing part with base latch, width: 161.6 mm, height: 89.7 mm, depth: 48.9 mm, color: black (similar RAL 9005), cross connection: DIN rail connector (optional), number of positions cross connector: 16

BC 161,6 UT HBUS GY7021 - Mounting base housing

1560324

<https://www.phoenixcontact.com/in/products/1560324>



DIN rail housing for use in distribution boards in accordance with DIN 43880, Lower housing part with base latch, width: 161.6 mm, height: 89.7 mm, depth: 48.9 mm, color: black gray (similar RAL 7021), cross connection: DIN rail connector (optional), number of positions cross connector: 16

BC 161,6 OT 2P2K1P0C1D1K KMGY - Upper housing part



1335979

<https://www.phoenixcontact.com/in/products/1335979>

BC 161,6 UT HBUS FS BK VPE80 - Mounting base housing

2200072

<https://www.phoenixcontact.com/in/products/2200072>



DIN rail housing for use in distribution boards in accordance with DIN 43880, Lower housing part with base latch, width: 161.6 mm, height: 89.7 mm, depth: 48.9 mm, color: black (similar RAL 9005), cross connection: DIN rail connector (optional), number of positions cross connector: 16

BC 161,6 DKL S TRANS BK - Housing cover

1210711

<https://www.phoenixcontact.com/in/products/1210711>



DIN rail housing for use in distribution boards in accordance with DIN 43880, transparent hinged cover, can be sealed, width: 161.6 mm, height: 45 mm, depth: 8 mm, color: black (similar RAL 9005)

BC 161,6 OT 2P2K1P0C1D1K KMGY - Upper housing part



1335979

<https://www.phoenixcontact.com/in/products/1335979>

BC 161,6 DKL S TRANS WH - Housing cover

1252988

<https://www.phoenixcontact.com/in/products/1252988>



DIN rail housing for use in distribution boards in accordance with DIN 43880, transparent hinged cover, can be sealed, width: 161.6 mm, height: 45 mm, depth: 8 mm, color: transparent

BC 161,6 DKL R D2,4 TCG BK - Housing cover with touch display

1335862

<https://www.phoenixcontact.com/in/products/1335862>



DIN rail housing for use in distribution boards in accordance with DIN 43880, Latching cover (non-detachable), integrated capacitive 2.4" touch display, resolution: 320 x 240 Pixel(s), interface: 4-wire SPI, width: 161.6 mm, height: 45 mm, depth: 13.5 mm

BC 161,6 OT 2P2K1P0C1D1K KMGY - Upper housing part



1335979

<https://www.phoenixcontact.com/in/products/1335979>

BC 161,6 DKL R D2,4 TCG KMGY - Housing cover with touch display

1335863

<https://www.phoenixcontact.com/in/products/1335863>



DIN rail housing for use in distribution boards in accordance with DIN 43880, Latching cover (non-detachable), integrated capacitive 2.4" touch display, resolution: 320 x 240 Pixel(s), interface: 4-wire SPI, width: 161.6 mm, height: 45 mm, depth: 13.5 mm

BC 161,6 DKL R D2,4 KPG KMGY - Housing cover with touch display

1335864

<https://www.phoenixcontact.com/in/products/1335864>



DIN rail housing for use in distribution boards in accordance with DIN 43880, Latching cover (non-detachable), integrated capacitive 2.4" touch display, resolution: 320 x 240 Pixel(s), interface: 4-wire SPI, width: 161.6 mm, height: 45 mm, depth: 13.5 mm

BC 161,6 OT 2P2K1P0C1D1K KMGY - Upper housing part



1335979

<https://www.phoenixcontact.com/in/products/1335979>

BC 161,6 DKL S TRANS WOP - Housing cover

1361183

<https://www.phoenixcontact.com/in/products/1361183>



DIN rail housing for use in distribution boards in accordance with DIN 43880, transparent hinged cover, can be sealed, without insertion plate, width: 161.6 mm, height: 45 mm, depth: 8 mm, color: transparent

BC 161,6 DKL R BK9005 - Housing cover

2201664

<https://www.phoenixcontact.com/in/products/2201664>



DIN rail housing for use in distribution boards in accordance with DIN 43880, Latching cover (non-detachable), width: 161.6 mm, height: 45 mm, depth: 8 mm, color: black (similar RAL 9005)

BC 161,6 OT 2P2K1P0C1D1K KMGY - Upper housing part

1335979

<https://www.phoenixcontact.com/in/products/1335979>



BC 161,6 DKL S KMGY - Housing cover

2202451

<https://www.phoenixcontact.com/in/products/2202451>



DIN rail housing for use in distribution boards in accordance with DIN 43880, Hinged cover, can be sealed, width: 161.6 mm, height: 45 mm, depth: 8 mm, color: light gray (similar RAL 7035)

BC 161,6 DKL S TRANS - Housing cover

2278542

<https://www.phoenixcontact.com/in/products/2278542>



DIN rail housing for use in distribution boards in accordance with DIN 43880, transparent hinged cover, can be sealed, including insertion plate, width: 161.6 mm, height: 45 mm, depth: 8 mm, color: light gray (similar RAL 7035)

BC 161,6 OT 2P2K1P0C1D1K KMGY - Upper housing part



1335979

<https://www.phoenixcontact.com/in/products/1335979>

HBUS8 161,6-8P-1S BK - DIN rail bus connectors

1249066

<https://www.phoenixcontact.com/in/products/1249066>



DIN rail connector, color: black, nominal current: 3 A (per contact), rated voltage (III/2): 100 V, number of positions: 8, product range: BC 161,6..., pitch: 2.54 mm, mounting: DIN rail mounting, locking: without

HBUS 161,6-16P-1S BK - DIN rail bus connectors

2278555

<https://www.phoenixcontact.com/in/products/2278555>



DIN rail connector, color: black, nominal current: 3 A (Total current of 25 A max.), rated voltage (III/2): 30 V, number of positions: 16, product range: BC 161,6..., pitch: 2.54 mm, mounting: DIN rail mounting, locking: without

BC 161,6 OT 2P2K1P0C1D1K KMGY - Upper housing part



1335979

<https://www.phoenixcontact.com/in/products/1335979>

HBUS8-B SET BK - Protective cap

1252176

<https://www.phoenixcontact.com/in/products/1252176>

Set of 3 caps, for protecting unused DIN rail bus connectors, simply snap on to fit



HBUS-B SET BK - Protective cap

2278173

<https://www.phoenixcontact.com/in/products/2278173>

Set of 3 caps, for protecting unused DIN rail bus connectors, simply snap on to fit



BC 161,6 OT 2P2K1P0C1D1K KMGY - Upper housing part



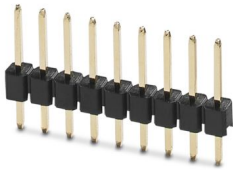
1335979

<https://www.phoenixcontact.com/in/products/1335979>

PSTD 0,65X0,65/9-1-2,54 - Pin strip

1252180

<https://www.phoenixcontact.com/in/products/1252180>



Pin strip, color: black, nominal current: 3 A (per contact), rated voltage (III/2): 100 V, contact connection type: Pin, number of potentials: 9, number of rows: 1, number of positions: 9, number of connections: 9, product range: PSTD 0,65X0,65/...-1-V, pitch: 2.54 mm, mounting: THR soldering, pin layout: Linear pinning, solder pin [P]: 6.3 mm, locking: without, type of packaging: packed in cardboard

PSTD 0,65X0,65/9-2,54 - Pin strip

2200700

<https://www.phoenixcontact.com/in/products/2200700>



Pin strip, color: black, contact connection type: Pin, number of potentials: 18, number of rows: 2, number of positions: 18, number of connections: 18, product range: PSTD 0,65X0,65/...-V, pitch: 2.54 mm, mounting: THR soldering, pin layout: Linear pinning, solder pin [P]: 2.5 mm, locking: without, type of packaging: packed in cardboard

BC 161,6 OT 2P2K1P0C1D1K KMGY - Upper housing part



1335979

<https://www.phoenixcontact.com/in/products/1335979>

PSTD 0,65X0,65/9-3IS-2,54 - Pin strip

1252178

<https://www.phoenixcontact.com/in/products/1252178>



Pin strip, color: black, nominal current: 3 A (per contact), rated voltage (III/2): 100 V, contact connection type: Pin, number of potentials: 9, number of rows: 1, number of positions: 9, number of connections: 9, pitch: 2.54 mm, mounting: THR soldering, pin layout: Linear pinning, solder pin [P]: 2.5 mm, locking: without, type of packaging: packed in cardboard

PSTD 0,65X0,65/18-3IS-2,54 - Pin strip

2202993

<https://www.phoenixcontact.com/in/products/2202993>



Pin strip for connecting an additional PCB or PCB with hole pattern to the HBUS

BC 161,6 OT 2P2K1P0C1D1K KMGY - Upper housing part



1335979

<https://www.phoenixcontact.com/in/products/1335979>

FUSSRIEGEL 14,4 L30 SPERR OG - Base latch

2896998

<https://www.phoenixcontact.com/in/products/2896998>



DIN rail housing for use in distribution boards in accordance with DIN 43880, Base latch, width: 14.4 mm, height: 29.8 mm, depth: 5.9 mm, color: orange (similar RAL 2003)

KP BC K4 C2 P5 - Membrane keypad

1337341

<https://www.phoenixcontact.com/in/products/1337341>



Membrane keypad for BC 107,6 and BC 161,6, self-adhesive, conductive silver technology, 4 keys, 2 colors, 7-pos. terminal lug, pitch: 1.0 mm, customizable in the online configurator

BC 161,6 OT 2P2K1P0C1D1K KMGY - Upper housing part



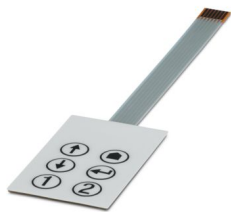
1335979

<https://www.phoenixcontact.com/in/products/1335979>

KP BC K6 C2 P7 - Membrane keypad

1337344

<https://www.phoenixcontact.com/in/products/1337344>



Membrane keypad for BC 107,6 and BC 161,6, self-adhesive, conductive silver technology, 6 keys, 2 colors, 7-pos. terminal lug, pitch: 1.0 mm, customizable in the online configurator

BC 161,6 PLATE KMGY - Insertion plate

1150589

<https://www.phoenixcontact.com/in/products/1150589>



DIN rail housing for use in distribution boards in accordance with DIN 43880, Insertion plate, width: 158.3 mm, height: 41.75 mm, depth: 1.5 mm, color: light gray (similar RAL 7035)

Phoenix Contact 2025 © - all rights reserved

<https://www.phoenixcontact.com>

PHOENIX CONTACT (I) Pvt. Ltd.

A-58/2, Okhla Industrial Area, Phase - II, New Delhi-110 020

+91.1275.71420

info@phoenixcontact.co.in