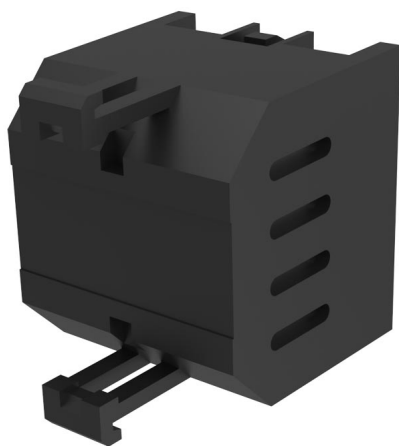


# EAO – Your Expert Partner for Human Machine Interfaces

704.943.5 - Flasher element

## 704.943.5 - Flasher element



*Attention: The preview is based on a sample product. This can differ from your current configuration.*

## Other Attributes

Weight	0,024 kg
Operating voltage	24 V DC $\pm$ 15 %

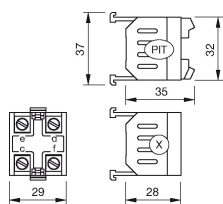
## Connection Method

Terminal	Screw terminal
----------	----------------

# EAO – Your Expert Partner for Human Machine Interfaces

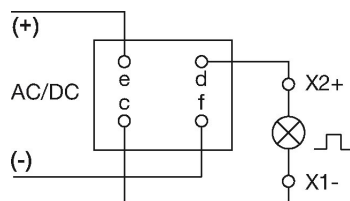
704.943.5 - Flasher element

## Dimensions



X = Screw terminal

## Wiring diagram



## Additional information

Lamp voltage/-current 24 V, 10 ... 85 mA