

Image may differ from product. See technical specification for details.

## UCT 212/H

### Take-up cast iron unit with insert ball bearing, set screw locking and extended inner ring, JIS

Take-up ball bearing units, consisting of an insert bearing based on a sealed deep groove ball bearing mounted in a grey cast iron housing. Typically mounted in take-up frames, the unit has an inner ring extended on both sides and is locked by tightening two set screws on the inner ring, which makes it easy to mount. Units with designation suffix /H feature a 120° angle of separation between the set screws that contributes to a higher stability and a better load balance.

- Designed for an alternating rotation
- Quick and easy to mount onto the shaft
- Accommodate static initial misalignment
- Long service life
- Reduced noise and vibration levels

Ask AI 

## Overview

### Dimensions

Shaft diameter	60 mm
Housing overall width	64 mm
Bearing width, total	65.1 mm

### Performance

Basic dynamic load rating	52.7 kN
Basic static load rating	36 kN
Limiting speed	2 700 r/min
Note	Limiting speed with shaft tolerance h6

### Properties

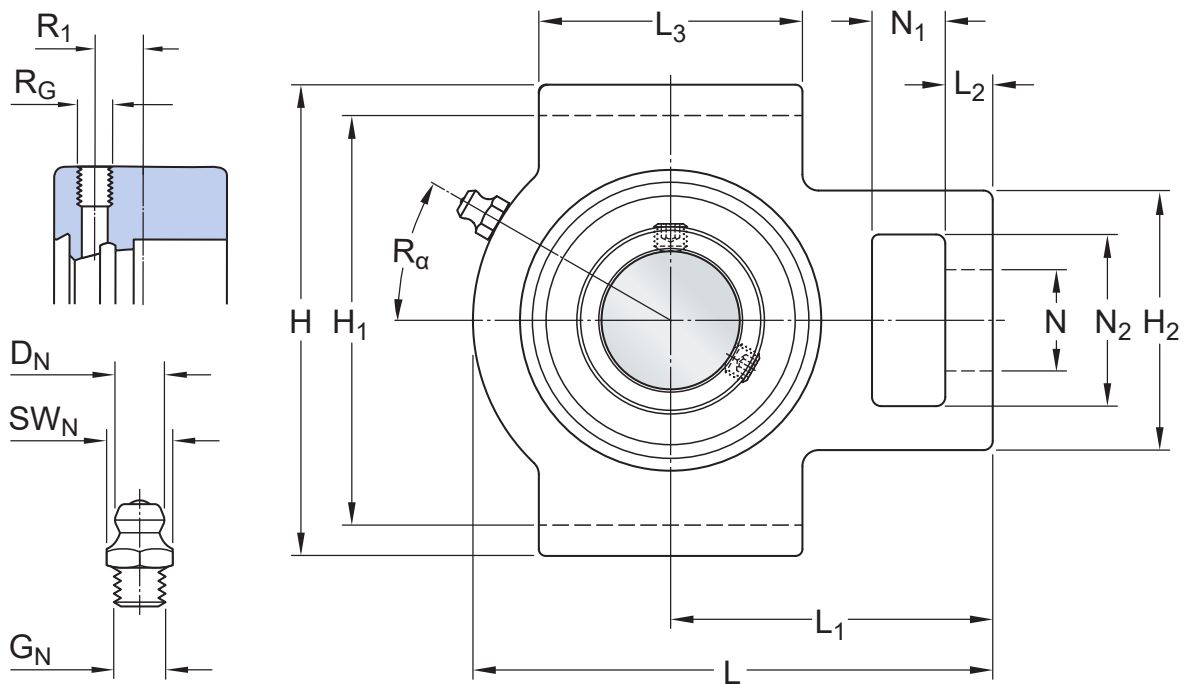
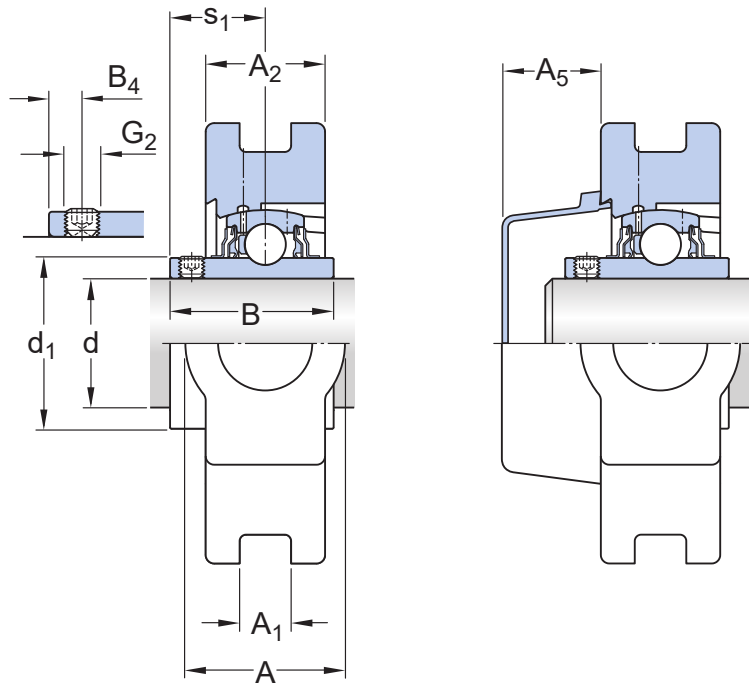
Housing type	Take-up
Retaining feature, inner ring	Set screws
Bore type	Cylindrical
Rubber seating ring	Without
Material, housing	Cast iron
Material, bearing	Bearing steel
Coating	Without
Sealing, bearing	Seal and flinger on both sides
Sealing type	Contact, standard
Sealing, unit	Optional end cover
Lubricant	Grease
Relubrication hole	With
Grease fitting	With

### Logistics

Product net weight	4.75 kg
--------------------	---------

## Technical specification

Compliance with standard	JIS
Purpose specific	For material handling applications
Material, housing	Cast iron
Sealing, bearing	Seal and flinger on both sides
Sealing type, bearing	Contact, standard
Sealing, unit	Optional end cover
Coating	Without



## Dimensions

d	60 mm	Bore diameter
d <sub>1</sub>	≈ 75.64 mm	Shoulder diameter of inner ring
A	64 mm	Overall width
A <sub>1</sub>	22 mm	Width of piloting groove
A <sub>2</sub>	42 mm	Width of flange in which piloting grooves are provided
A <sub>5</sub>	39 mm	Standout of end cover
B	65.1 mm	Width of inner ring
B <sub>4</sub>	10 mm	Distance from locking device side face to thread centre
H	146 mm	Overall height
H <sub>1</sub>	130 mm	Distance between bottoms of piloting grooves
H <sub>2</sub>	102 mm	Height of attachment end
L	194 mm	Overall length
L <sub>1</sub>	119 mm	Distance from attachment end face to centre line of spherical seat diameter
L <sub>2</sub>	19 mm	Length attachment end
L <sub>3</sub>	102 mm	Length of piloting groove
N	35 mm	Diameter of attachment bolt hole
N <sub>1</sub>	32 mm	Length of attachment slot
N <sub>2</sub>	64.5 mm	Height of attachment slot
s <sub>1</sub>	39.7 mm	Distance from locking device side face to raceway centre

## THREADED HOLE

R <sub>G</sub>	1/8-27 NPT	Housing thread for the grease fitting
R <sub>1</sub>	4 mm	Axial position of the housing thread
R <sub>α</sub>	30 °	Angular position of the housing thread

## GREASE FITTING

D <sub>N</sub>	6.589 mm	Diameter of head sphere of grease fitting
SW <sub>N</sub>	11.11 mm	Hexagonal key size for the grease fitting
G <sub>N</sub>	1/8-27 NPT	Thread of grease fitting

## Calculation data

Basic dynamic load rating	C	52.7 kN
Basic static load rating	C <sub>0</sub>	36 kN

Fatigue load limit	$P_u$	1.53 kN
Limiting speed		2 700 r/min
		Limiting speed with shaft tolerance h6

## Mounting information

Set screw	$G_2$	M10x1
Hexagonal key size for set screw		5 mm
Recommended tightening torque for set screw		16.5 N·m

## Tolerances and clearances

The values depend on the included bearing:

- Bore diameter tolerance → [table 1](#)
- Radial internal clearance → [table 2](#)
- Recommended fit → [table 3](#)
- Shaft tolerance → [table 4](#)

## Compatible products

### Recommended product

---

End cover for bearing units

[ECY 212](#)



# Terms of use