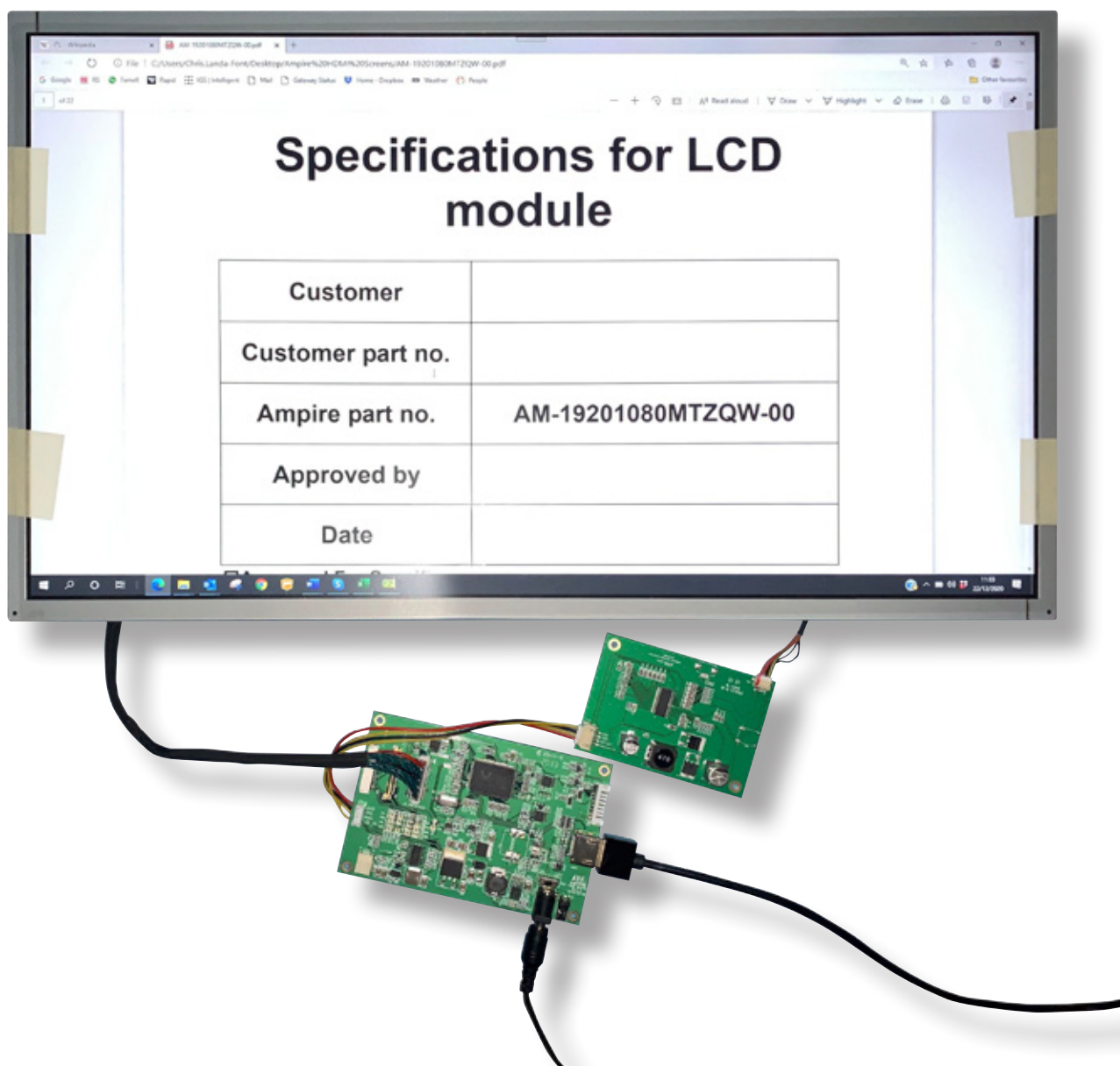


# Quick Start Guide

## AM-19201080MTZQW-00



## CONTENTS

Kit Content [page 2](#)

Part 1: Connecting the backlight PCB to the display [page 3](#)

Required Parts not Supplied in Kit [page 2](#)

## KIT CONTENTS

Item	Description	Qty
1	Display with touch panel	1
2	HDMI driver PCB assembly and cables	1
3	Backlight driver PCB assembly and cables	1



## REQUIRED PARTS NOT SUPPLIED IN THE KIT

Item	Description	RS Part Number
1	12V 2A Power supply with 2.1mm x 5.5mm DC Jack	144-0971

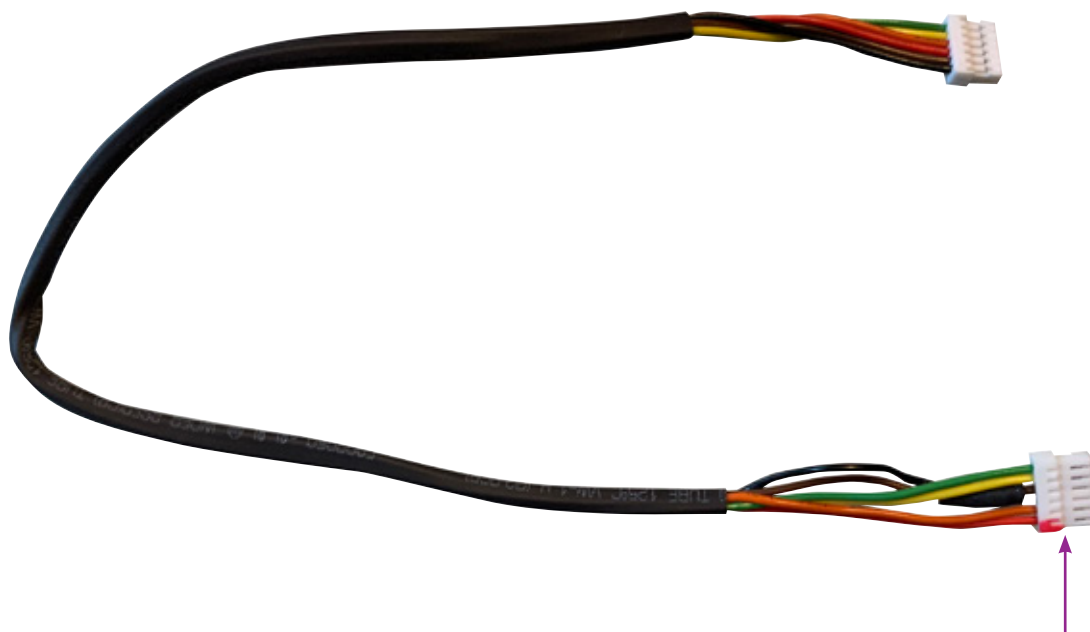
## PART 1: CONNECTING THE BACKLIGHT PCB TO THE DISPLAY

Open ESD protection bags and check kit contents.



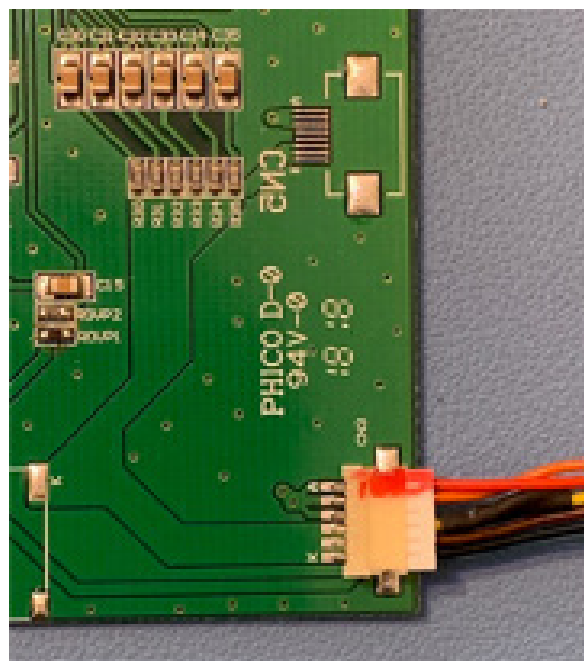
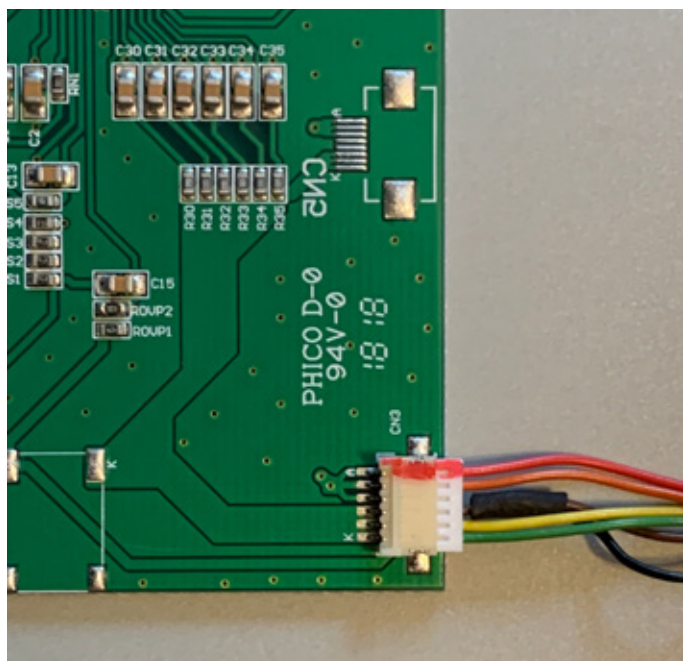
## PART 1: CONNECTING THE BACKLIGHT PCB TO THE DISPLAY

Locate the red mark on one end of the backlight connector.



Connect the backlight cable into the backlight PCB

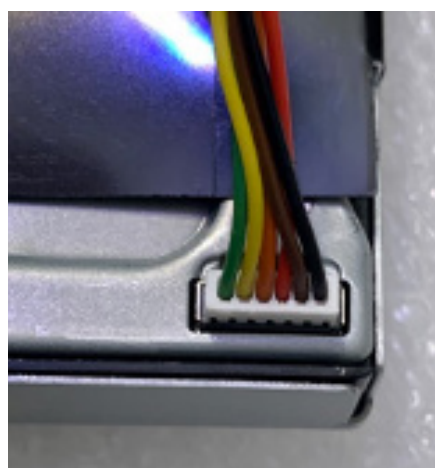
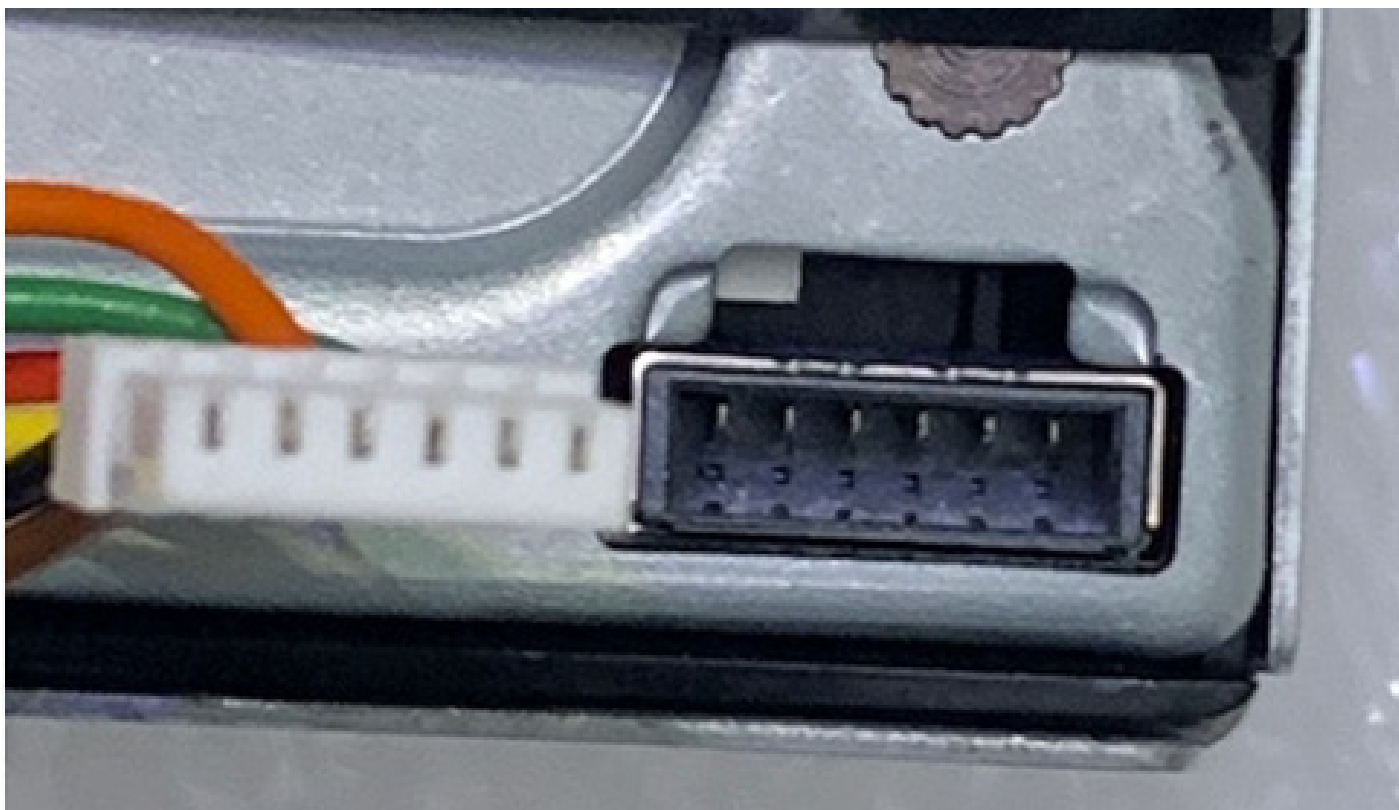
Note that the manufacturer uses different colours so the colours may not match the images below but the red mark should line up.





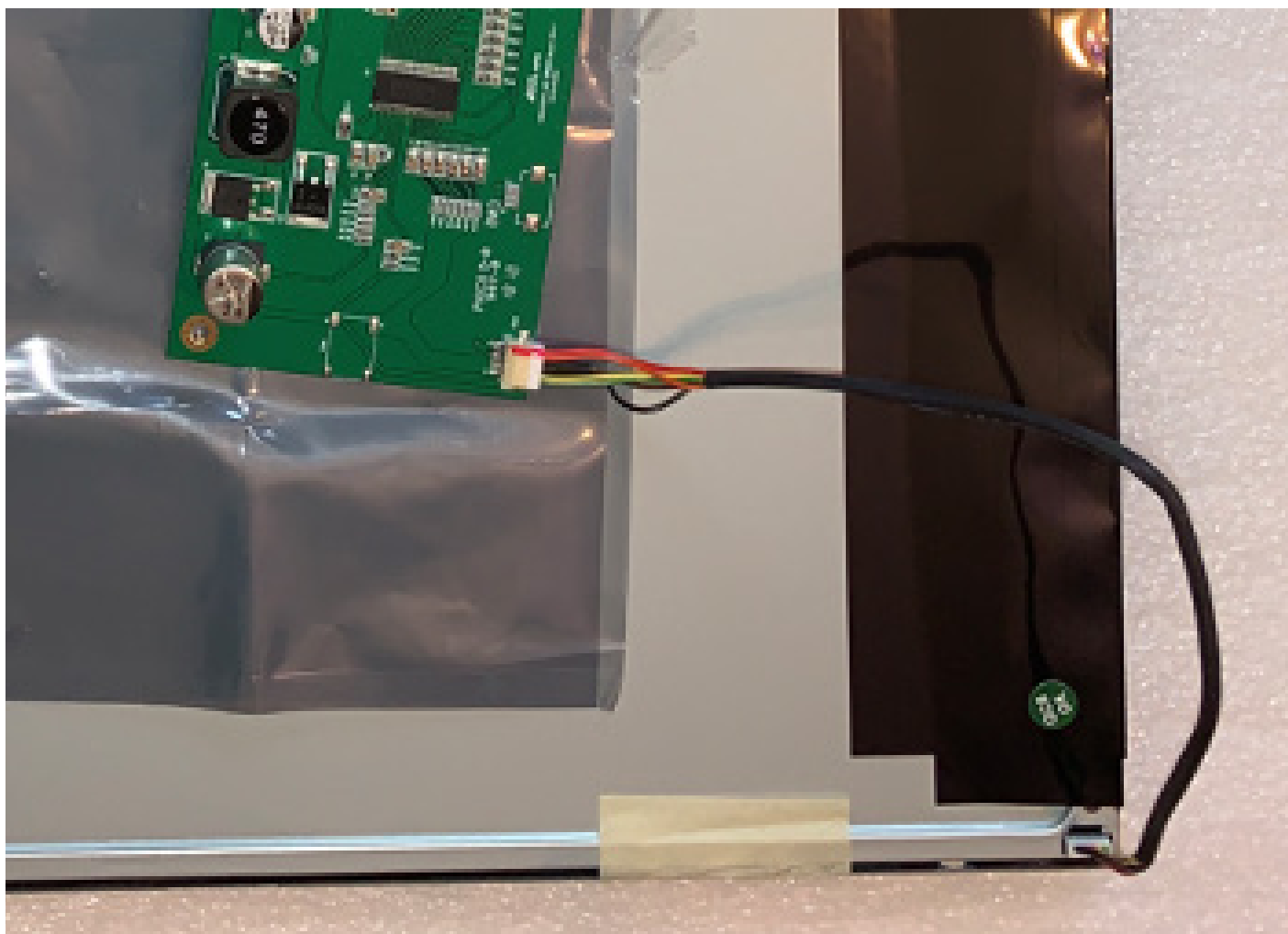
## PART 1: CONNECTING THE BACKLIGHT PCB TO THE DISPLAY

Observe the connector on the back of the display. Note that the connection pins are to one side of the black housing. Observe the connector on the end of the cable and note that the sockets are also at one side of the housing. The connector should be placed with the pins and sockets on the same side. If it is difficult to insert then it may be the wrong way round. Note that the manufacturer supplies two versions of this cable with opposite colours, so either may be inside your kit.



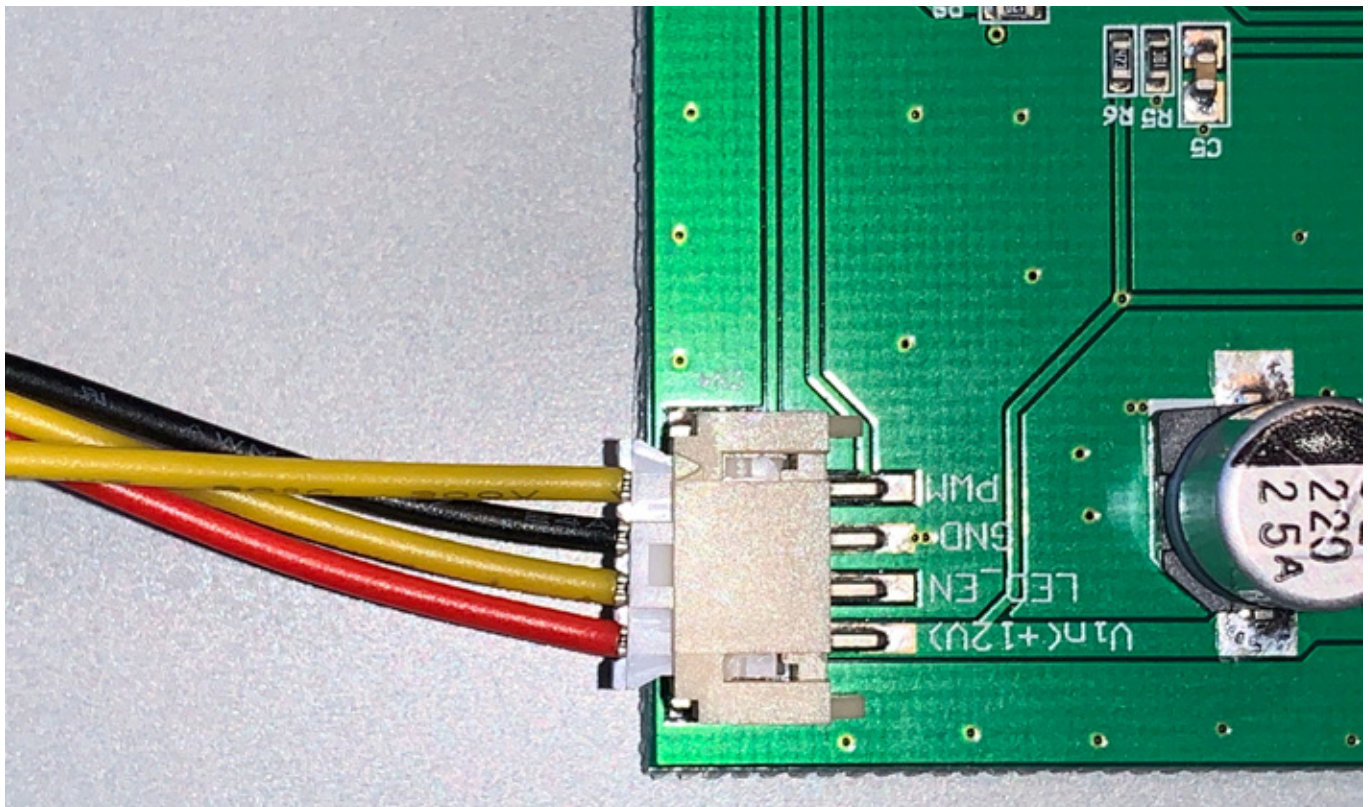
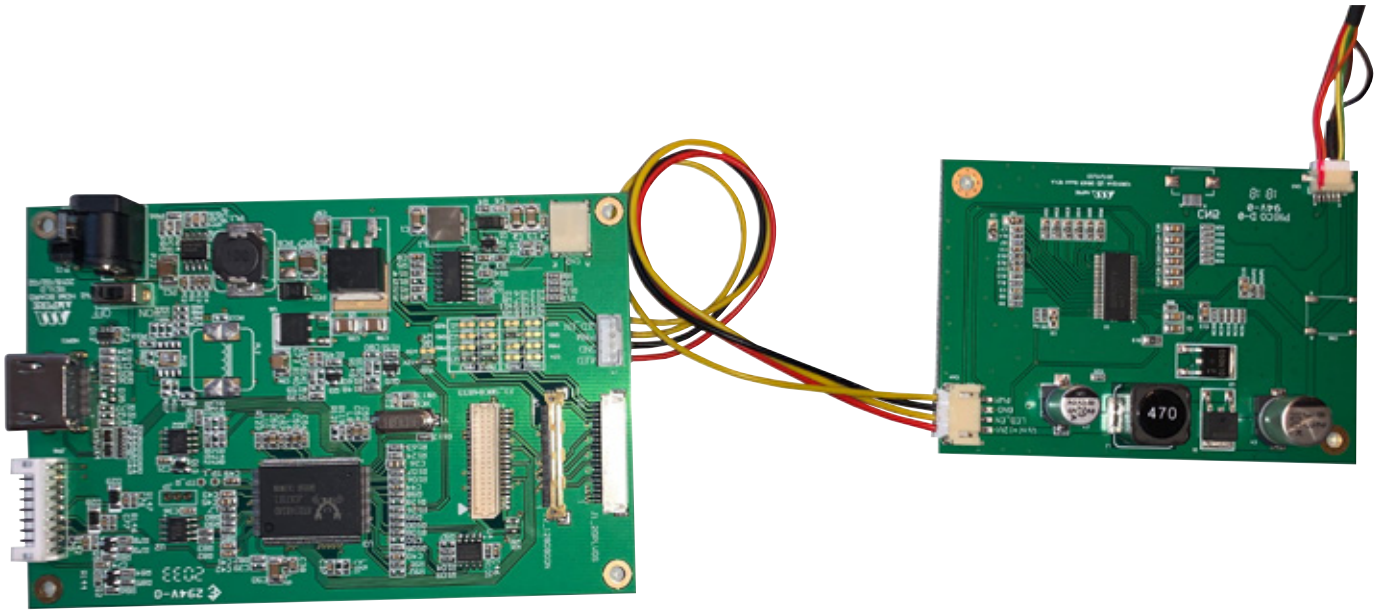
## PART 1: CONNECTING THE BACKLIGHT PCB TO THE DISPLAY

The backlight connection should look like this



## PART 1: CONNECTING THE BACKLIGHT PCB TO THE DISPLAY

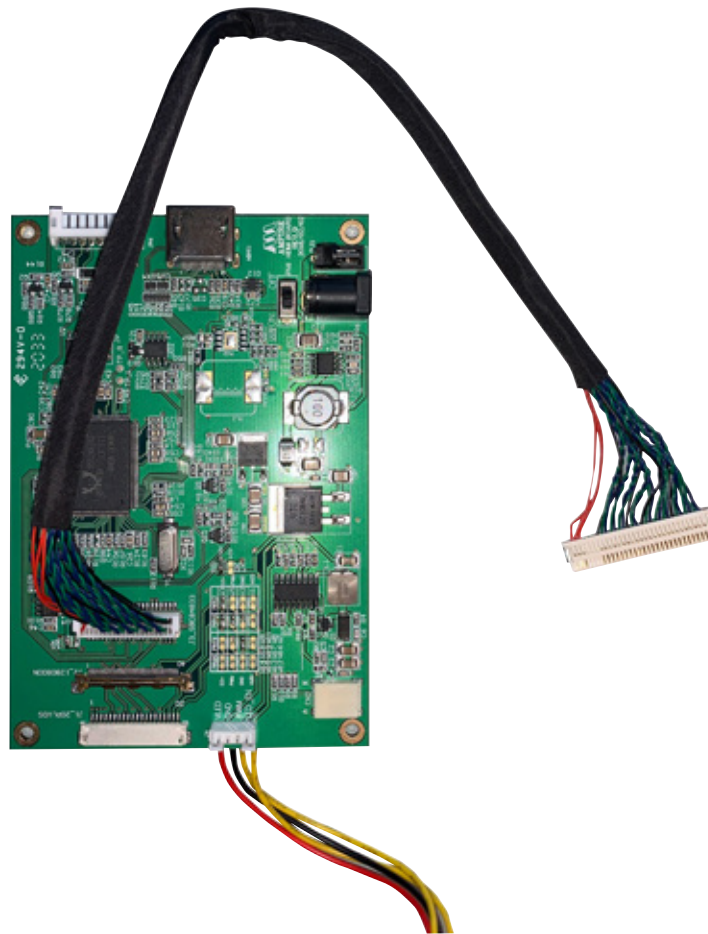
Connect the backlight power connection from the LVDS driver board.



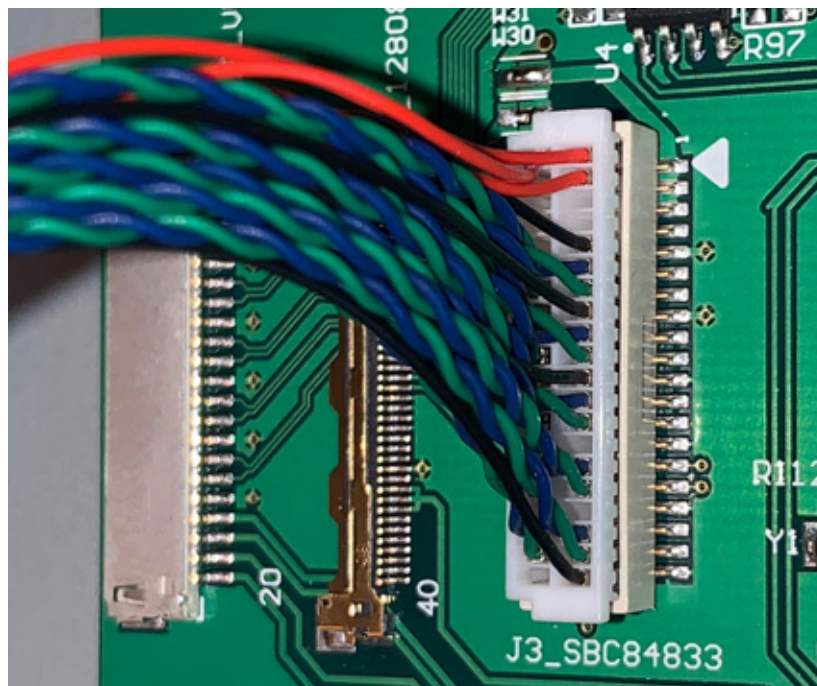


## PART 1: CONNECTING THE BACKLIGHT PCB TO THE DISPLAY

Connect the LVDS cable into the HDMI driver PCB.



Take care to line up the pins and use the correct orientation as per the picture below.

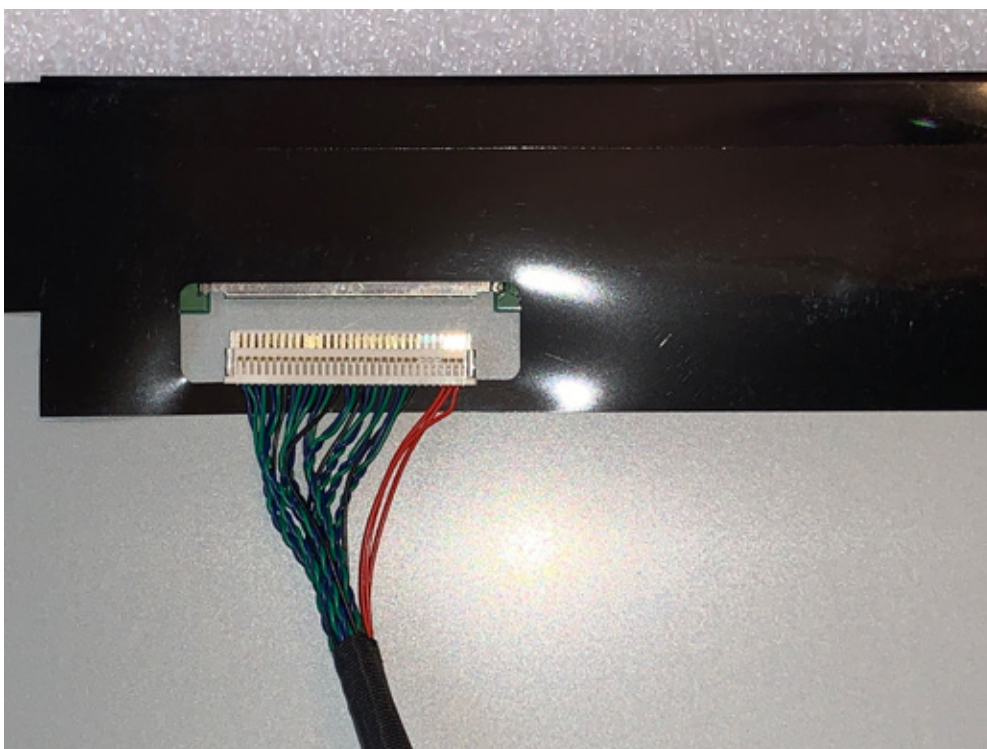




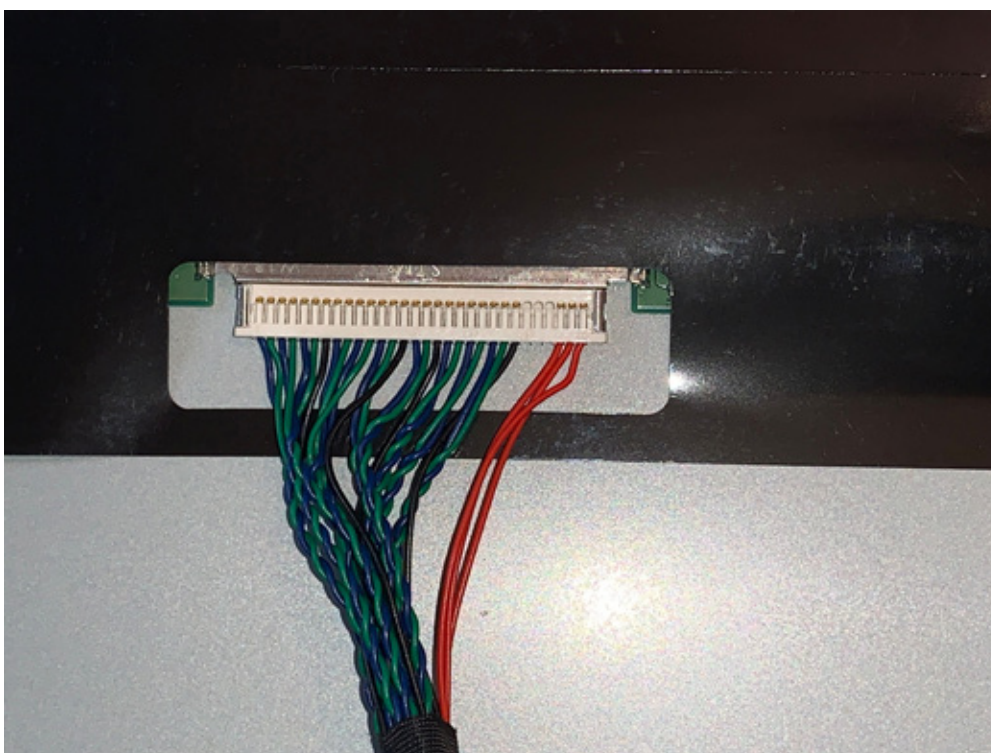
## PART 1: CONNECTING THE BACKLIGHT PCB TO THE DISPLAY

Connect the LVDS cable into the back of the display.

Align the connector with the contacts facing up as per the photo below.



Align the connector with the contacts facing up as per the photo below.



## PART 1: CONNECTING THE BACKLIGHT PCB TO THE DISPLAY

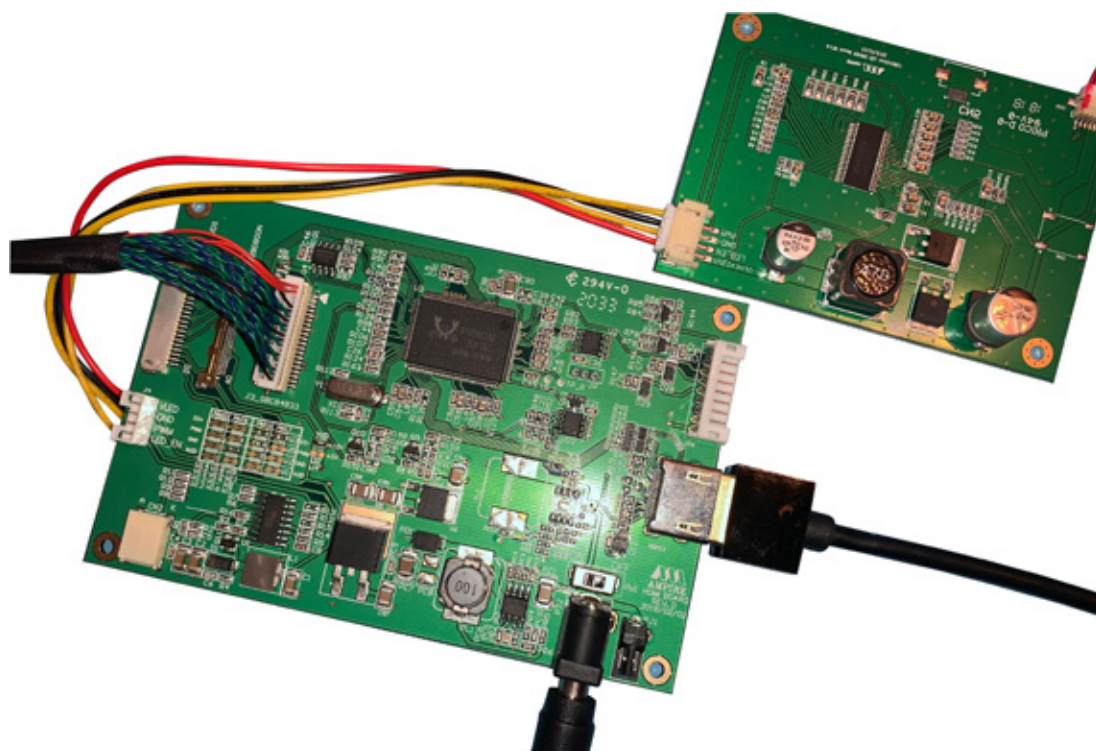
The connections should look like this when the connectors are connected correctly.



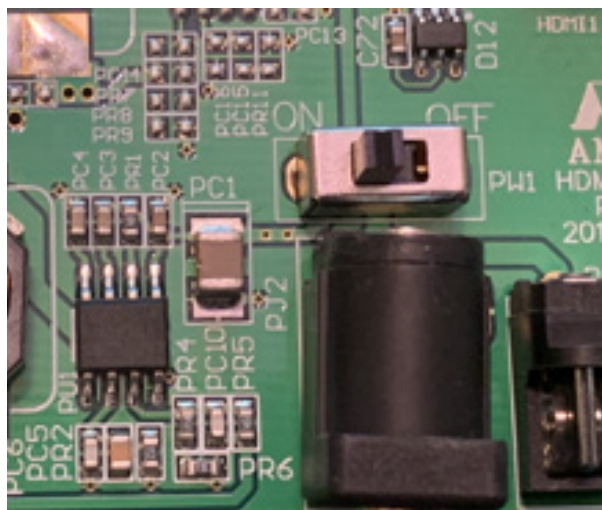


## PART 1: CONNECTING THE BACKLIGHT PCB TO THE DISPLAY

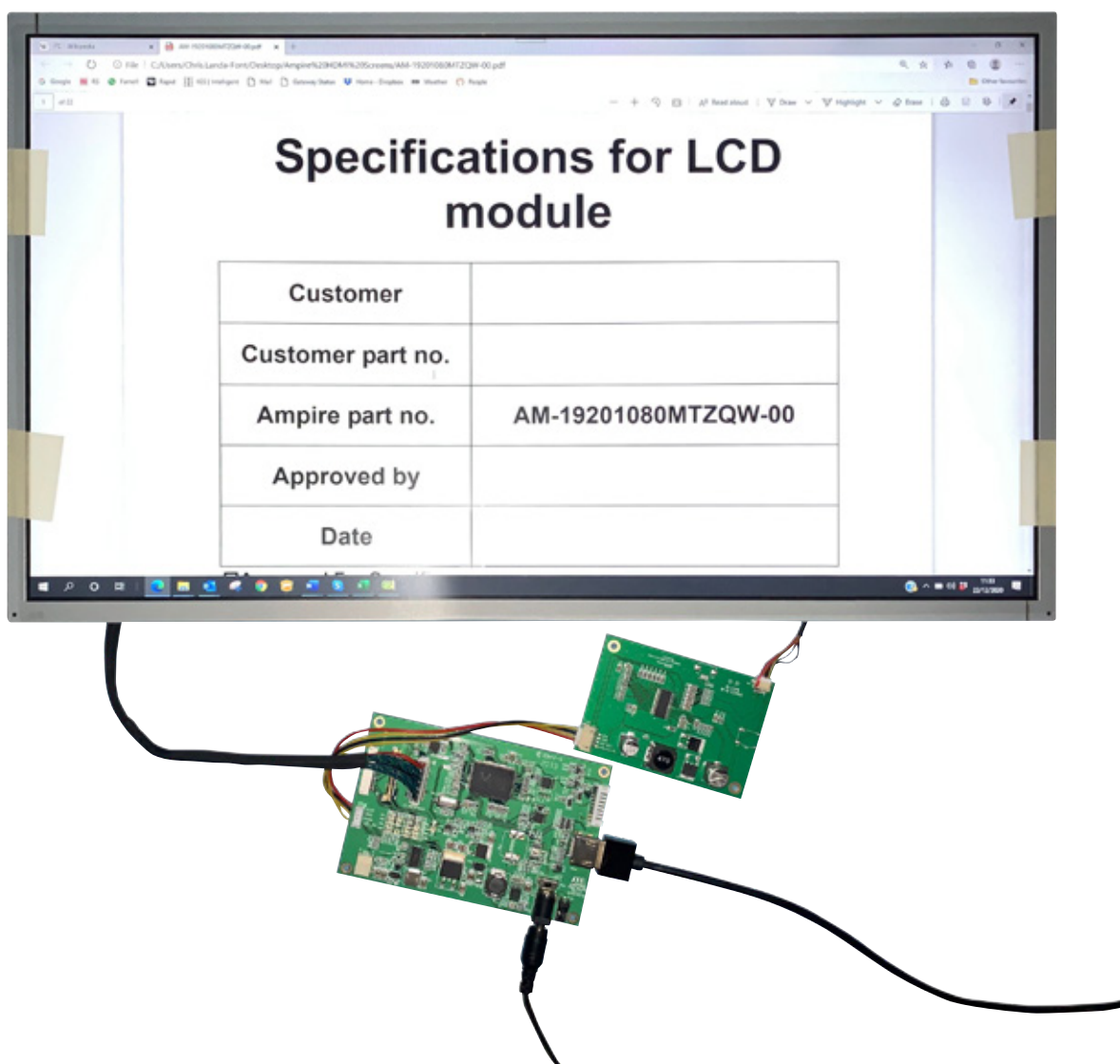
Align the connector with the contacts facing up as per the photo below.



Align the connector with the contacts facing up as per the photo below.



## PART 1: CONNECTING THE BACKLIGHT PCB TO THE DISPLAY



The connections are very fragile and easily torn. It is recommended that all connections are taped and all loose parts are insulated and taped to the rear of the display once the connections have been completed.



## FURTHER INFORMATION

The values contained in this data sheet can change due to technical innovation. Any such changes will be made without separate notification.

If you require further assistance or have a specific or custom enquiry, please contact the IDS team via email or phone. Alternatively please visit our website for more product info and to see our full range.



Unit 2, Berkshire Business Centre,  
Berkshire Drive, Thatcham,  
Berkshire, RG19 4EW

+44 (0)1635 294600

[info@i-lcd.com](mailto:info@i-lcd.com)

[www.i-lcd.com](http://www.i-lcd.com)

## ABOUT IDS

Intelligent Display Solutions was established in 2001 by display industry experts. We have extensive knowledge of both the technical and user interface approaches to designing displays for various applications, using LCD, TFT and OLED technologies. We work with our customers to develop new and innovative displays - some award-winning - to enhance their products.

IDS is a division of Intelligent Group Solutions Ltd (IGS) - a well-established, respected, industry-leading Optoelectronics solutions provider. Much of IGS' business comes from providing semi-custom or custom products, both in component and sub-assembly form. We offer design support and prototyping within the European marketplace, with the capability to deliver production displays to wherever in the world the customer's manufacturing or assembly is being undertaken.

## INTELLIGENT GROUP SOLUTIONS DIVISIONS

