

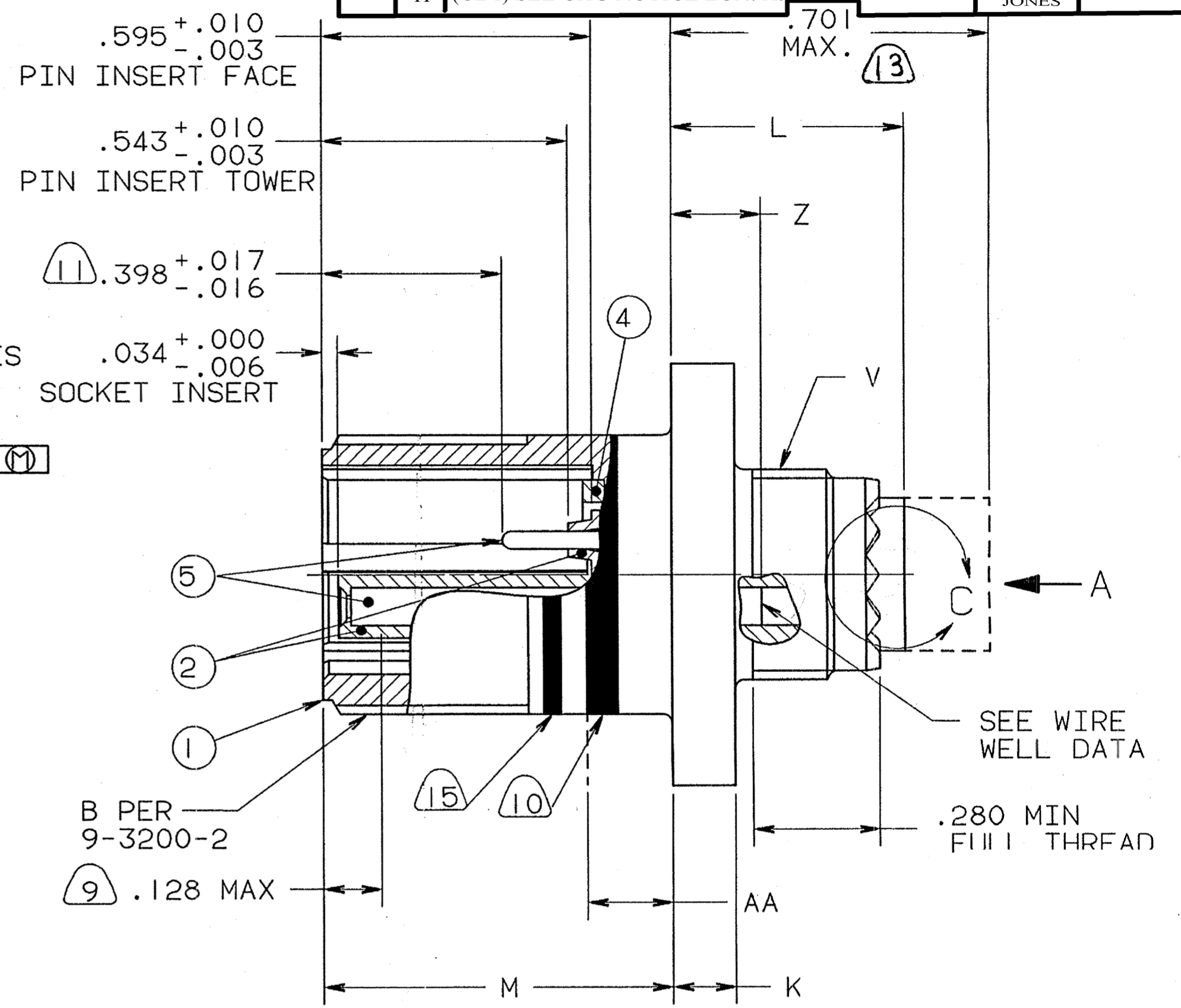
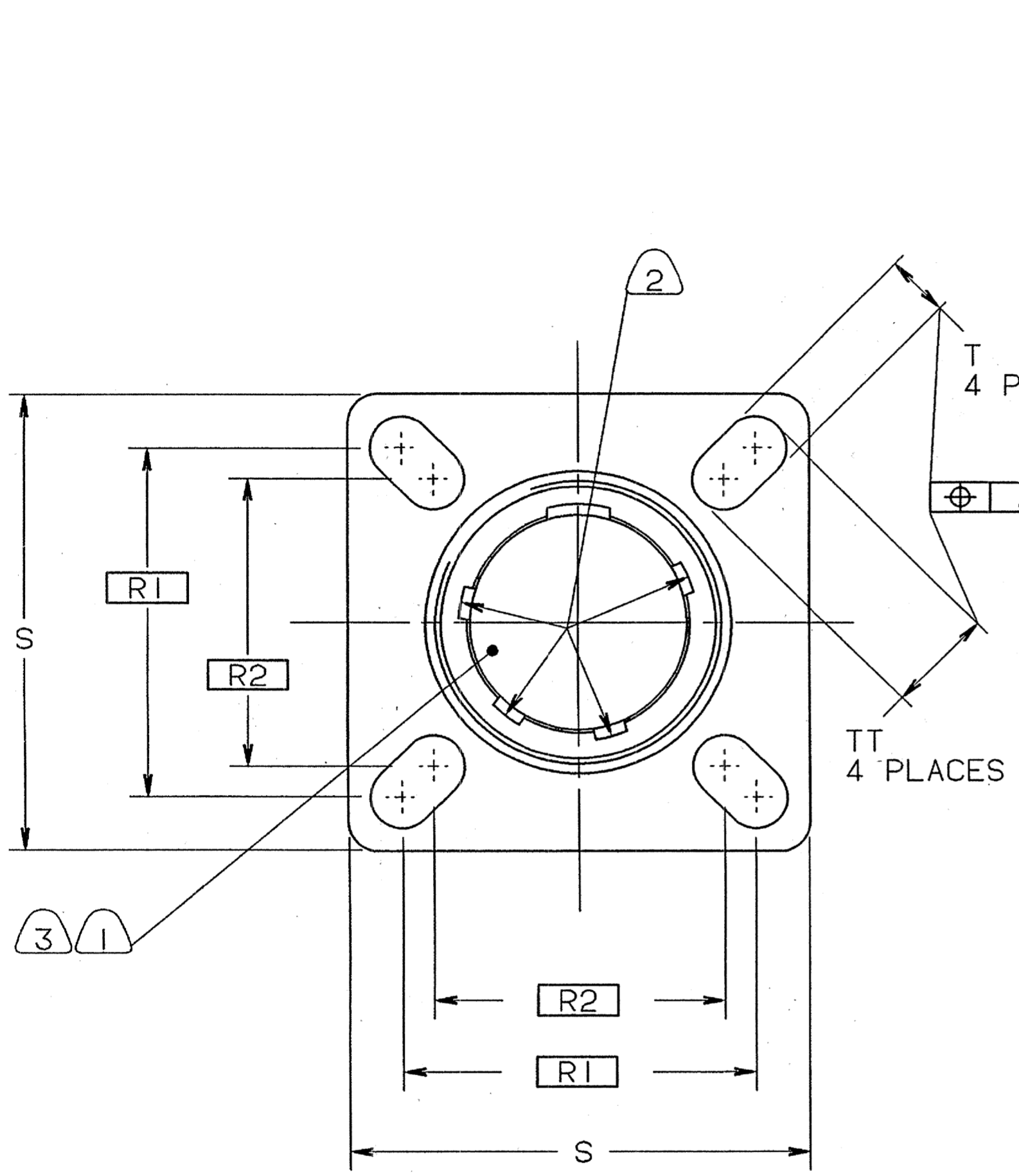
4

3

2

1

REVISIONS				
ZONE	LTR	DESCRIPTION	DATE	APPROVED
SEE RECORD DRAWING FOR REVS A THRU F				
	G	(CL II) SEE CHG NOTICE ECN: A0990	11-27-06 JONES	
	H	(CL I) SEE CHG NOTICE ECN: A9483	12-8-10 JONES	



UNLESS OTHERWISE SPECIFIED  
LINEAR DIMENSIONS ARE IN  
INCHES.  
TOLERANCES: .XXX±.010,  
.XX ±.03, .X ±.1,  
ANGLES ±2°.  
OTHER STANDARDS PER 9-3800  
AND DOD-D-1000.  
NOTE REF. =

COMPANY ID: 2  
CODED/MS/CUST: Y  
INTERNAL: N  
LOTNO: Y  
DATE CODE: 9-3895  
SEE PRINT: N

N/A  
N/A  
NEXT ASSEMBLY

FIND NO.	QTY REQD.	FSCM NO.	PART NUMBER	DESCRIPTION	NOTE REF.
5			SEE NOTE 5	CONTACTS	4,5
4	1		10-527257-()	GASKET	5
3			SEE PART LIST	INSULATOR ASSY.	
2	1		10-676060/069-()P 10-552440/449-()P 10-538170/179-()P 10-555407/249-()S 10-417307/350-()S	INSERT, PIN OR OR OR OR INSERT, SOCKET	3,5
1	1		10-527244/249-()R	SHELL	5

SPECIFICATIONS		SIGNATURES		DATES		PARTS LIST	
MATERIAL SPEC.	N/A	PREPARED D. FREAR	CHECKED D. MacAnay	2-24-92	2-26-92	AMPHENOL CORPORATION 40-60 DELAWARE AVENUE SIDNEY, N.Y.	
PROCESS SPEC.	SEE NOTE 7	APPROVED D. MacAnay	2-26-92	5-11-92	CONNECTOR, ELECTRICAL RECEPTACLE, TYPE MSCTVPOORJ(), OLIVE DRAB PLATED, GOLD PLATED CONTACTS		
SIZE	C	FSCM NO.	77820	REF	88-578860/869	REV	H
SCALE	NONE	WT.		REF	88-577770/779	SHEET	1 OF 2

SEE SHEET 2  
NOTES:

THE USE OF THIS DOCUMENT IS UNLIMITED.  
HOWEVER, DOCUMENTS REFERENCED HEREON  
MAY CONTAIN LIMITED RIGHTS DATA.

ASSEMBLY NUMBER

MS NUMBER

B  
THREAD (PLATED)  
PER 9-3200-2  
CLASS 2A

K  
+.003  
-.002

L  
MAX

M  
±.0025

R1

R2

S  
+.006  
-.005

T  
+.008  
-.006

TT  
+.008  
-.006

V  
THREAD (PLATED)  
PER 9-7543

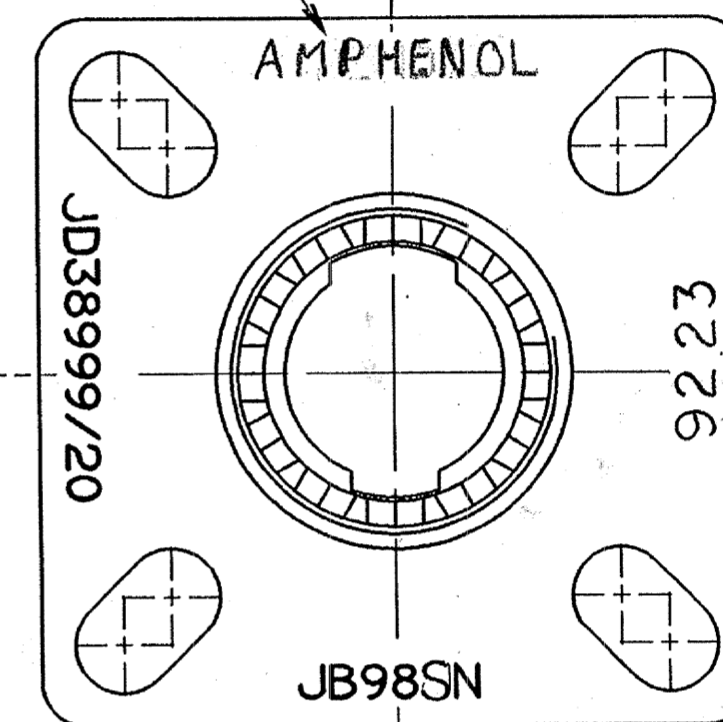
Z  
MAX

AA  
MAX  
PANEL  
THICK-  
NESS

88-578860-()		NOT AVAILABLE												
88-578861-()	D38999/20JA()	.6250-0.1P-0.3L-TS	.140	.514	.7702	.719	.594	.942	.128	.216	M12X1-6g 0.100R	.198	.234	
88-578862-()	D38999/20JB()	.7500-				.812	.719	1.037		.194	M15X1-			
88-578863-()	D38999/20JC()	.8750-				.906	.812	1.131		.194	M18X1-			
88-578864-()	D38999/20JD()	1.0000-				.969	.906	1.226		.173	M22X1-			
88-578865-()	D38999/20JE()	1.1875-				1.062	.969	1.316		.194	M25X1-			
88-578866-()	D38999/20JF()	1.2500-				1.156	1.062	1.442		.194	M28X1-			
88-578867-()	D38999/20JG()	1.3750-	.168	.545	.7387	1.250	1.156	1.568		.194	M31X1-	.228	.204	
88-578868-()	D38999/20JH()	1.5000-	.168			1.375	1.250	1.694	.154	.242	M34X1-			
88-578869-()	D38999/20JJ()	1.6250-	.168			1.500	1.375	1.816	.154	.242	M37X1-			

TO COMPLETE, ADD INSERT ARRANGEMENT SUFFIX PER 9-2437-25

12 STAMP "AMPHENOL", DATE CODE PER 9-3895, MS NO. & LOT NO. PER 9-5788 INCLUDE "J" PREFIX  
EXAMPLE:  
AMPHENOL JD38999/20JB98 N 9223 001000 FOR ROTATED KEYWAYS  
EXAMPLE:  
AMPHENOL JD38999/20JB98 A 9223 001000



VIEW AT A

		WIRE WELL DATA					
		22M	22D	22	20	16	12
COAXIAL DATA	WELL DIA	.028±.001	.0345±.0010	.0365±.0010	.047±.001	.067±.001	.100±.002
SEE NOTE 1	WELL DEPTH	.141 <sup>+.016</sup> <sub>-.000</sub>	.141 <sup>+.016</sup> <sub>-.000</sub>	.141 <sup>+.016</sup> <sub>-.000</sub>	.209 <sup>+.020</sup> <sub>-.000</sub>	.209 <sup>+.020</sup> <sub>-.000</sub>	.209 <sup>+.020</sup> <sub>-.000</sub>

7. PROCESS SPEC:  
ASSY. 9-5047-13  
TEST 9-5726  
9-2437-25, 9-5788  
9-3200-2, 9-7543, 9-3895.  
SPECIAL CONTROL 9-6000-2, PROCESS CONTROL 9-4796

6. PACKAGE PER PRODUCTION PROCESS SHEET.

5. SEE SEPARATE PARTS LIST FOR COMPONENT PART NUMBERS AND QUANTITIES.

4. DRAWING ILLUSTRATES FINAL ASSEMBLY. FOR FINAL INSTALLATION, CONTACTS MUST BE ASSEMBLED INTO ALL INSERT HOLES. ALL UNUSED GROMMET HOLES MUST BE FILLED WITH THE APPROPRIATE SIZE SEALING PLUG 10-405996. CONTACTS ARE SHIPPED UNASSEMBLED.

3. INSERT ASSEMBLY IS NOT REMOVABLE.

2. ALTERNATE ROTATIONS ARE OBTAINED BY ROTATING INDICATED KEYWAYS. SIX POSITIONS ARE AVAILABLE. SEE 9-2437-25. ROTATION IDENTIFICATION LETTER APPEARS ON INDICATED SURFACE. NORMAL ROTATION NOT IDENTIFIED.

1. FOR CONTACT ARRANGEMENT PATTERN, SEE DRAWINGS L-15206-() THRU L-15225-(). ALTERNATE POSITIONS THEREON DO NOT APPLY.

16. REMOVED

15. FULLY MATED INDICATOR BAND (COLOR RED).

14. UNITS MEET THE REQUIREMENTS OF MIL-DTL-38999.

13. DIMENSION INDICATES GROMMET STICKOUT FOR 25-11 INSERT ASSY.

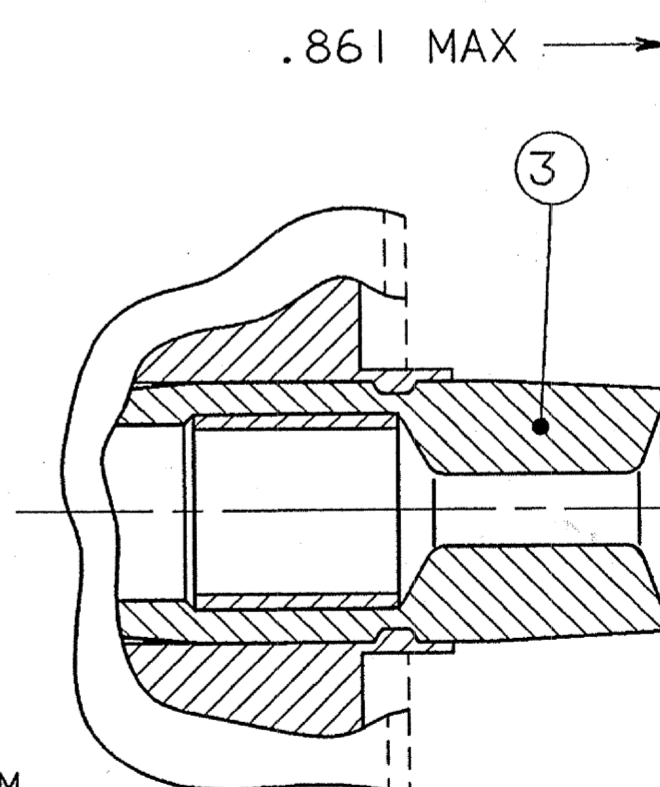
12. SEE WORK ORDER FOR PERMISSIBLE ADDITIONAL OR ALTERNATE STAMPING.

11. FOR SIZE 8 COAX CONTACT DIM IS .175±.025. SEE NOTE 16

10. BLUE BAND DENOTES REAR RELEASE CONTACT SYSTEM.

9. DISTANCE FROM END OF SHELL TO THE POINT AT WHICH A GAGE PIN HAVING THE SAME BASIC DIAMETER AS THE MATING CONTACT AND A SQUARE FACE, ENGAGES SOCKET CONTACT SPRING.

8. FOR MATING CONNECTOR, SEE 88-578850/859 & OTHERS.



VIEW C  
ENLARGED

FOR COAXIAL ONLY

**R**  
D. MacLean

NOTES:

THE USE OF THIS DOCUMENT IS UNLIMITED. HOWEVER, DOCUMENTS REFERENCED HEREON MAY CONTAIN LIMITED RIGHTS DATA.

SIZE C	FSC# NO. 77820	88-578860/869	REV. H
SCALE	WT.	REF	SHEET 2

COMPUTER GENERATED DRAWING

MAGED / Feb. 04 2011, 3:45:10 PM

88-578860/869

B

A

TAB.