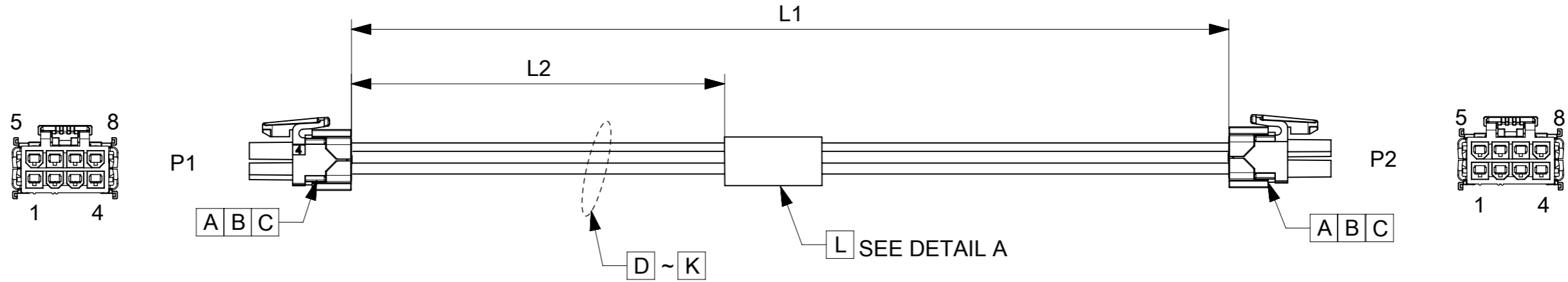
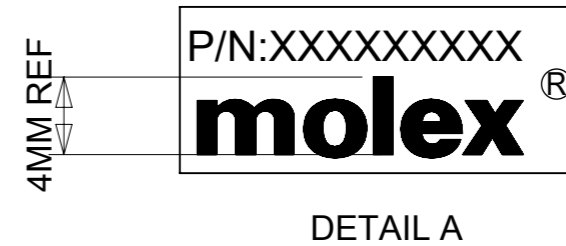


| REVISIONS |            |     |                             |         |
|-----------|------------|-----|-----------------------------|---------|
| EC NO     | DATE       | REV | DESCRIPTION                 | CHANGER |
|           | 2016.04.13 | A   | INITIAL RELELASE.           | DICK    |
|           | 2016.04.27 | A1  | NO CHANGE                   | DICK    |
| CY19-5273 | 2019.02.01 | B   | UPDATE P1 AND P2 SIDE VIEW. | ANDREW  |



| TABLE       |         |        |                         |
|-------------|---------|--------|-------------------------|
| PART NUMBER | L1      | L2     | TITLE                   |
| 451350801   | 150±10  | 65±8   | Minifit 8 Circuit 150MM |
| 451350803   | 300±10  | 140±10 | Minifit 8 Circuit 300MM |
| 451350810   | 1000±15 | 490±10 | Minifit 8 Circuit 1M    |



**NOTES**

- THIS PRODUCT MUST MEET 2011/65/EU ROHS COMPLIANCE.  
此产品需符合 2011/65/EU ROHS环保要求.
- ELECTRICAL PERFORMANCE REFER TO ES-000.  
电气特性参考ES-000.
- LABEL TEXT MUST BE 2mm Min. IN HEIGHT WITH ARIAL FONT.  
标签字高最小2mm, 字体ARIAL.
- CONNECTORS REFER TO PS-172718-0000 & AS-172718-0000.  
连接器应用参考 PS-172718-0000 & AS-172718-0000.
- STICK UL LABEL ON THE OUTSIDE CARTON.  
外箱上贴UL标签.

| L    | Blank Label 25.4x57.15mm (Wh:19.05mm) HF    |       | 1    |
|------|---|-------|------|
| K    | 16AWG;PLATED;PVC;WT;OD=2.35MM;UL1007        |       | A/R  |
| J    | 16AWG;PLATED;PVC;BU;OD=2.35MM;UL1007        |       | A/R  |
| I    | 16AWG;PLATED;PVC;BN;OD=2.35MM;UL1007        |       | A/R  |
| H    | 16AWG;PLATED;PVC;GN;OD=2.35MM;UL1007        |       | A/R  |
| G    | 16AWG;PLATED;PVC;YL;OD=2.35MM;UL1007        |       | A/R  |
| F    | 16AWG;PLATED;PVC;OR;OD=2.35MM;UL1007        |       | A/R  |
| E    | 16AWG;PLATED;PVC;RD;OD=2.35MM;UL1007        |       | A/R  |
| D    | 16AWG;PLATED;PVC;BK;OD=2.35MM;UL1007        |       | A/R  |
| C    | MINIFIT TPA 2.0, RECPT TPA, V-0, 4CKT       |       | 4    |
| B    | MINIFIT TPA 2.0, CRP TERM, C260, 16AWG S CN |       | 16   |
| A    | MINIFIT TPA 2.0, DR RECPT HSG, V-0, 8CKT    |       | 2    |
| ITEM | DESCRIPTION                                 | L(MM) | Q'TY |

PRE-RELEASE  
REFERENCE  
USE ONLY

| WIRING CHART |    |        |
|--------------|----|--------|
| P1           | P2 | COLOR  |
| 1            | 4  | BLACK  |
| 2            | 3  | RED    |
| 3            | 2  | ORANGE |
| 4            | 1  | YELLOW |
| 5            | 8  | GREEN  |
| 6            | 7  | BROWN  |
| 7            | 6  | BLUE   |
| 8            | 5  | WHITE  |

|   |  |   |  |   |  |
|---|--|---|--|---|--|
| QUALITY SYMBOLS<br>A = 0<br>E = 0<br>F = 0<br>G = 0<br>C = 0<br>X = 0<br>B = 0<br>V = 0 | EC NO: 2019/01/24<br>DRWN: WLXIE<br>CHK'D: WLXIE<br>APPR: 2019/02/11 | GENERAL TOLERANCES (UNLESS SPECIFIED)<br>ANGULAR TOL ± °<br>4 PLACES ±<br>3 PLACES ±<br>2 PLACES ±<br>1 PLACE ±<br>0 PLACES ±<br>DRAFT WHERE APPLICABLE MUST REMAIN WITHIN DIMENSIONS | DIMENSION UNITS: mm<br>SCALE: NTS          |   |  |
|   |  |   | DRWN BY: WLXIE<br>DATE: 2016/03/02         |   | PRODUCT CUSTOMER DRAWING<br>SERIES: 201234<br>MATERIAL NUMBER: SEE TABLE<br>CUSTOMER: GENERAL MARKET |
|   |  |   | CHK'D BY: DHUANG16<br>DATE: 2016/03/29     |   |  |
|   |  |   | APPR BY: YXZOU<br>DATE: 2016/04/20         |   |  |
| DRAFT WHERE APPLICABLE MUST REMAIN WITHIN DIMENSIONS                                    |  |   | DRAWING SIZE: A3<br>THIRD ANGLE PROJECTION | DOCUMENT NUMBER: 2012341037<br>DOC TYPE: PSD<br>DOC PART: 000<br>SHEET NUMBER: 1 OF 1 |  |